

# 38 Golda

FMM73

As seen in *The Farmer's Wife 1930s Sampler Quilt* book by Laurie Aaron Hird

## From MARTI MICHELL Perfect Patchwork Templates Conversion Chart

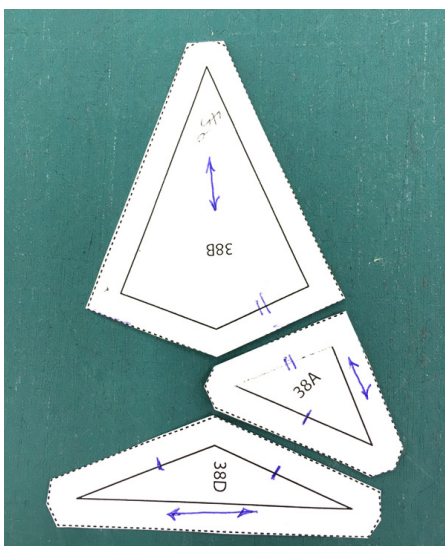
For personal use in conjunction with the book and these From MARTI MICHELL Tools:

Optional—Small Kaleido-Ruler #8641 or Large Kaleido-Ruler #8642; Template 80 in Set N #8956



### Cutting

Whether you plan to cut actual size pieces with the paper patterns or use the combination Kaleido-Ruler and paper patterns described below, I think you will find it helpful to cut out paper patterns and position them as they will be sewn, then add grainline arrows and marks to designate edges that are sewn together.



1. If you own either of the From MARTI MICHELL multi-size Kaleido-Rulers, they are the perfect tools for this block. Of course, #8641 (2" to 8" finished size triangles every 1/2") is the easiest to use, but #8642 (6" to 16" blocks every inch) will also work. I am using the small Kaleido-Ruler and a fabric foundation method of sewing Golda.

To do this, use the 6" finished size on the ruler to cut four Kaleido-angles of each color (to replace the #38B or F pieces) and 4 corners to replace #38C.

2. Cut out and use the paper patterns and acrylic edges for the other pieces.

For each color of #38A, cut 2 strips 1 1/16" wide by 6" long. Put them right sides together and cut 4 pairs. I used triangle template N-80 (even though it is slightly larger than the #38A pieces) to provide a cutting edge and slid it around as needed on top of the paper pattern to position and trim corners.



For both colors of #38D and #38E, cut a strip a full 1" wide and 12" long. Fold it in half to 1" x 6" and cut 2 pieces at a time. Use any acrylic edge on top of the paper pattern to provide a firm edge for rotary cutting. Trim corners to match pattern.

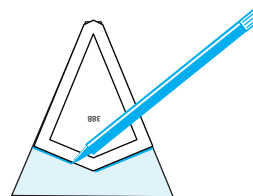
### Sewing Golda without Foundation

If you are using all paper pattern cut pieces, assemble as shown in the book.

See Alta, Chart #13, for instructions on joining the large triangles.

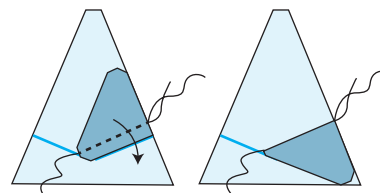
### Sewing Golda with Fabric Foundation

1. If you are using the fabric foundation method to make the 8 large pieced triangles, start by placing the #38A paper pattern (including seam allowances) on top of the right side of the Kaleido-Angle fabric so that the edges align. Make a mark at the bottom of the paper (both sides) at the edge of the triangle. These are the placement marks for the small pieces.

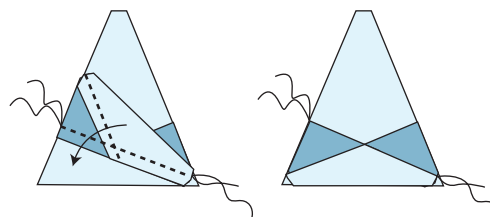


2. Join the left #38A (with the right side of the fabric up) with the appropriate #38D or #38E pieces. Press toward the #38A piece.

3. Align the corner of the remaining #38A pieces on the Kaleido-angles, as shown. Join with 1/4" seam and press down. The #38A corners should just touch both edges of the foundation triangle.



4. Align the joined #38A and #38D or E pieces in the same way and sew with a 1/4" seam. Press down. The bottom edge should align perfectly. Make 4.



When all 8 triangles are complete join them as described in Alta, Chart #13.