

7 Augusta

As seen in *The Farmer's Wife 1930s Sampler Quilt* book by Laurie Aaron Hird

FMM56



From MARTI MICHELL Perfect Patchwork Templates Conversion Chart

For personal use in conjunction with the book and these From MARTI MICHELL Tools:

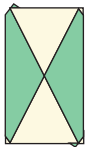
Perfect Patchwork Template Sets B #8152 and D #8154. Optional: Multi-Size Peaky and Spike Set #8289

Augusta Template	7A	7B	7C	7D	7E
is the same as FMM Template	D-28	Altered D-23	D-29	B-14	Altered D-22

Observe grainline arrows on templates when cutting.

Augusta is a block where you might want to mix foundation paper piecing of 7E and 7B pieces and template cut the rest of the block. However, if you are like me and you only want template cutting, we'll show you how here. Refer to previous block instructions to measure and cut strips the Marti Way.

Cutting the D-28, D-29 and B-14 pieces is very straightforward. Cutting the altered D-22 and D-23 pieces for the rectangular "X" units involves some template magic that makes for easy sewing!



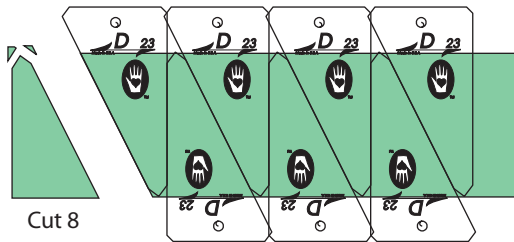
Cutting the "X" Sub-units

1. Cut strips of "green" fabric $3\frac{1}{2}$ " wide x 11" long. True up the left end if right-handed, the right end if left-handed.

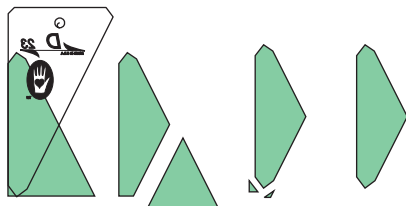
2. Align template D-23 right side up, with the point touching the top edge of the strip as shown, and cut the first triangle.



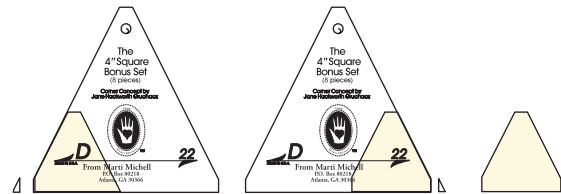
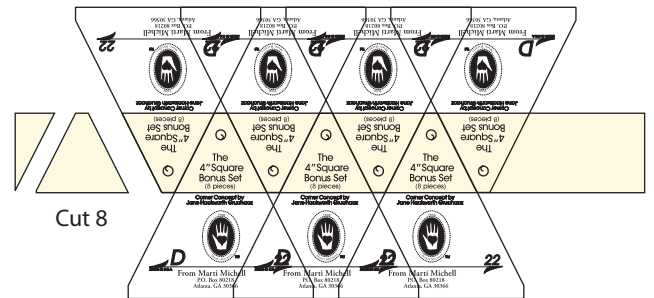
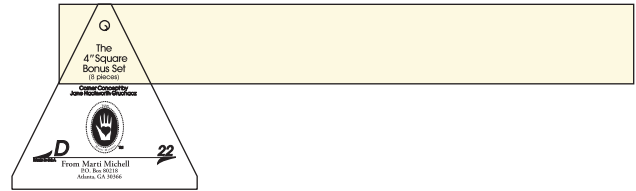
3. Rotate and re-align the template to cut the next triangle. Continue alternating the template on the strip to cut 8 triangles.



4. Turn the template over so the printing reads backwards, align it as shown and cut away to create the new shape. Nip the points. Trim all 8 pieces this way.

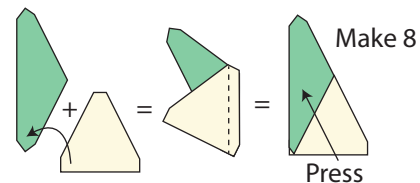


5. Cut 7 strips of cream fabric as wide as D-28 (approximately $1\frac{1}{16}$ "") and 14" long. Cut 8 pieces, as shown at the top of the next column. Nip the corners.

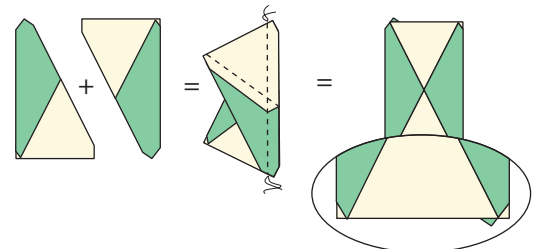


Making the "X" Sub-units

1. Align the point of D-23 and square corner of D-22 and stitch. Press toward the larger piece. Make 8 sub-units.



2. Arrange and join 2 of the sub-units made above to create a rectangular unit. It should measure a scant $3\frac{3}{8}$ " by $1\frac{1}{16}$ ". Make 4.



Make the remaining units and complete the block as shown in the book.