

# 83 Poppy (Or Pippa, Our Version of Poppy)

As seen in *The Farmer's Wife 1930s Sampler Quilt* book by Laurie Aaron Hird

FMM54



## From MARTI MICHELL Perfect Patchwork Templates Conversion Chart

For personal use in conjunction with the book and these From MARTI MICHELL Tools:

Perfect Patchwork Template Set S, Product #8166, and the Multi-Size Peaky and Spike Set #8289

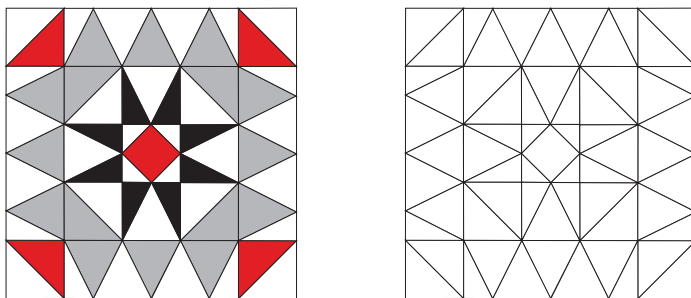
Poppy Template	83A	83B	83C	83D	83E	83F
is the same as FMM Set S Template	P&S	S-100	P&S	P&S	S-100a cutting trick	S-100a or ruler cut a scant $1\frac{3}{8}$ " square

Observe grainline arrows on templates when cutting.

You made Doris last week. This week you get to do it again only smaller! The nine pieced squares that make up the center unit of Poppy are just like Doris except the corners, and if you look at the color key of my block you will see that I chose to rotate those units in Poppy. I also changed the coloration for a more balanced design. Maybe it is so different, we should call our block "Pippa."

The small diagram was very handy for counting the number of pieces to cut. If you change the arrangement, the empty block is for your version.

Pippa

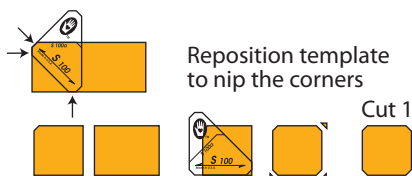


## Cutting Poppy and Pippa

Use S-100 and special template cutting tricks to cut both the square and the 4 tiny triangles for the center unit.

### Cut the 83E Square with a From MARTI MICHELL S-100 Cutting Trick

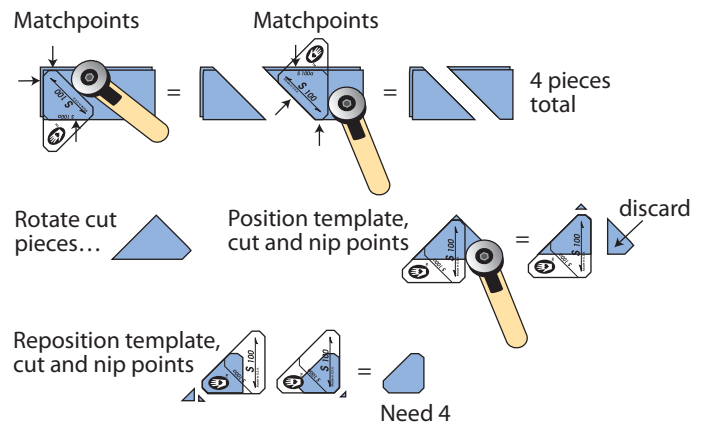
1. Cut a short strip a scant  $1\frac{3}{8}$ " wide (or measure and cut the Marti Way with the hypotenuse of template S-100 against your ruler.) True up one end of the strip.
2. Position the template on the strip as shown below, aligning the silkscreened line for S-100a with the top of the strip and the points touching the end and bottom of the strip as indicated by the matchpoints. Cut against the hypotenuse to create the square. Don't forget to nip the points of the square.



### Cut the 83F Triangles with S-100 and a Different Cutting Trick

Cut a pair of strips a scant  $1\frac{3}{8}$ " wide and true up one end of the strips. Position template S-100 on the strip stack as shown below, aligning the hypotenuse with the end of the strips and the line for S-100a with the bottom of the strips. Make the first diagonal cut. Reposition the template on the strip as shown and make the straight cut. Rotate and repeat two more times.

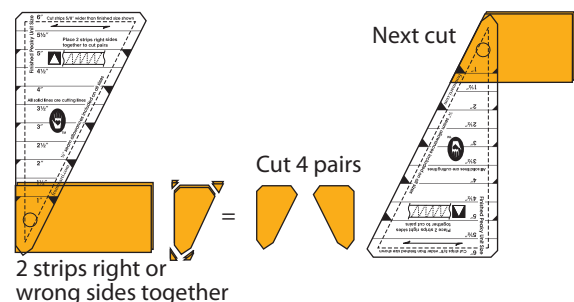
With the template and cut pieces positioned as shown, trim off the excess fabric. Nip the points.



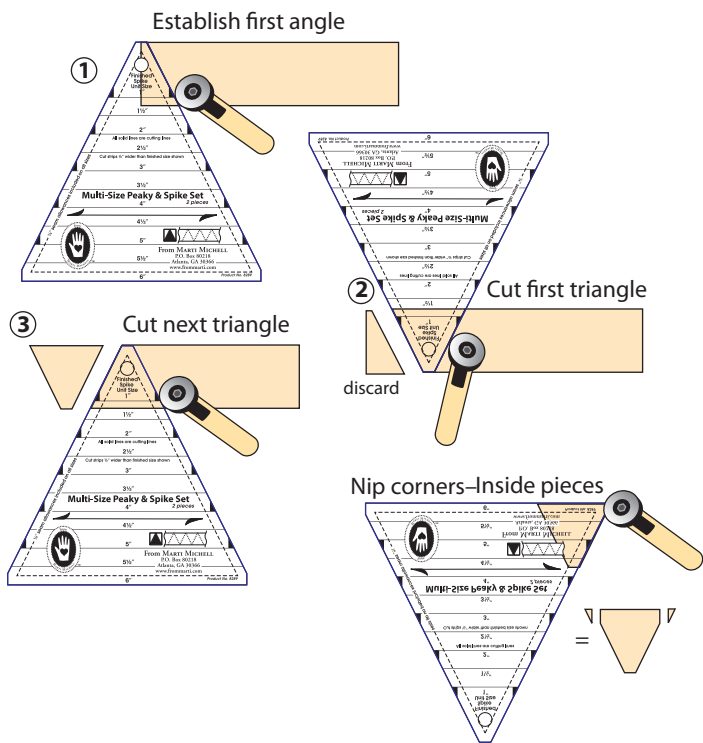
### Cutting Peaky and Spike

Cut both Peaky and Spike for the center unit just like Doris and Judy, but for the outside rows, it is easier to cut and sew only Spike triangles and then trim the pieced triangles to finished size needed.

1. Cut strips for 83C Peaky pieces a scant  $1\frac{7}{8}$ " wide. Use template S-99 to measure strip width for pieces A, B and D.
2. Put tape on the template for  $1\frac{1}{4}$ " finished size. Cut fabrics for Peaky right or wrong sides together to get mirror image pieces.



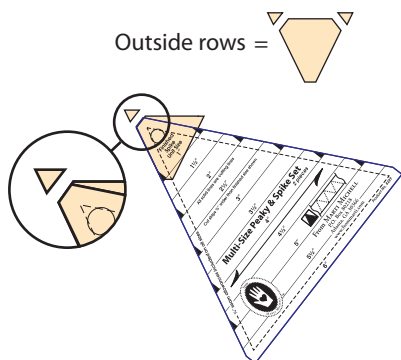
3. Cut the large Spike triangles. Nip the inside pieces as shown.



### Special Corner Cut for Spike Triangles on the Outside Rows

For the small Spike triangles that will be sewn together on the outside rows of this block, we do a special corner cut to make alignment of those triangles easier.

Cut Spike triangles from strips as always with one blunt corner at the top of the triangle. Do not nip off the normal corners. Instead, rotate the template so the corners of the blunt end are “kissing” one side and the bottom of the cut piece and the edge of the template is perfectly aligned with one side – not the bottom- of the fabric triangle. Nub off the pointed corner and repeat on the third corner. The corners of the pieces should align perfectly for sewing.



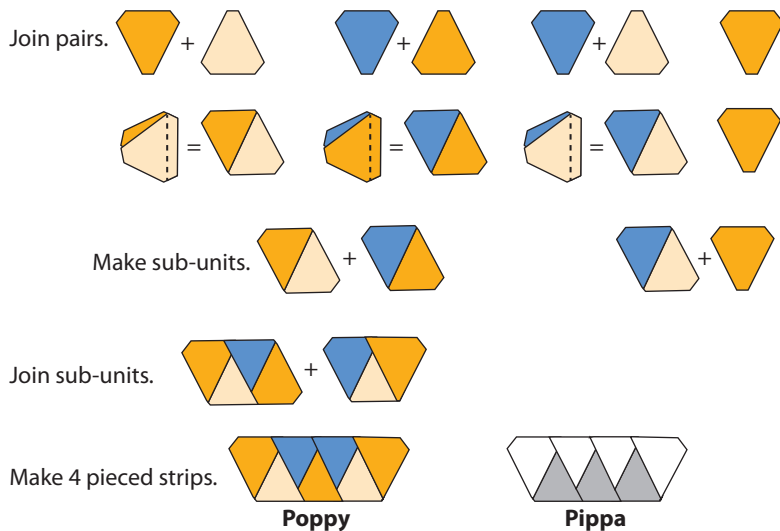
### Sewing the Interior Units

The nine sub-units in the center are pieced just like Doris. You decide which way to rotate the corner to make Poppy or Pippa. This section should be  $4\frac{1}{8}$ ” square, including seam allowances.

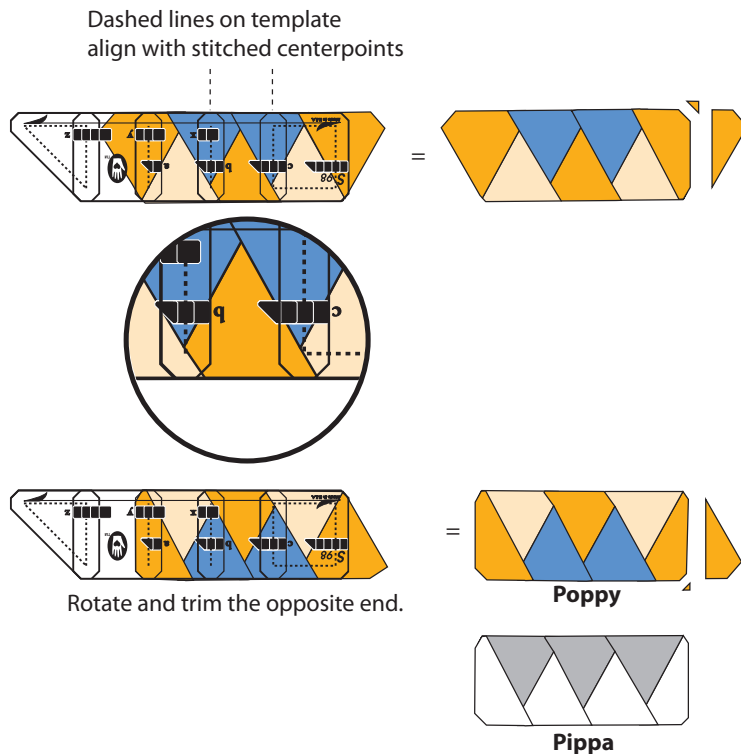
### Sewing the Alternating Spike Triangles

These are not equilateral triangles, so make sure to keep track of the base of the triangles.

1. Stack the dark triangles on the left and light on the right.
2. Turn the light triangles over onto the dark and chain piece to join into sets of three pairs, continuing to alternate the colors. Finally, add the last triangle as needed



4. If you own Set S, trim the piece down to the length of S-98y,  $4\frac{1}{8}$ ”. Center the dashed lines which represent finished sizes on the light triangles and trim one end. Then rotate and trim the other end. Make 4.



5. Pay careful attention to the orientation and add pieced S-100 HST to both ends of 2 units from step 4.
6. Complete the block as shown in the book.