

# 72 Mrs. Smith

FMM 47

As seen in *The Farmer's Wife 1930s Sampler Quilt* book by Laurie Aaron Hird

## From MARTI MICHELL Perfect Patchwork Templates Conversion Chart

For personal use in conjunction with the book and these From MARTI MICHELL Tools:

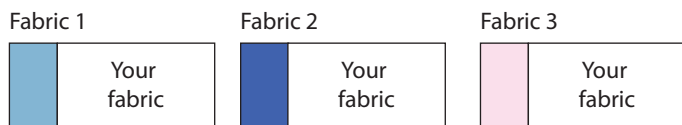
Perfect Patchwork Templates Set A, Product #8251 and Log Cabin Ruler #8037



Mrs. Smith Template	72A	72B	73C	72D	72E, F
is the same as FMM Tool	LCR-a	LCR-b	LCR-a or A-7 Double-cut	A-5	LCR-c Modified

Observe grainline arrows on templates when cutting.

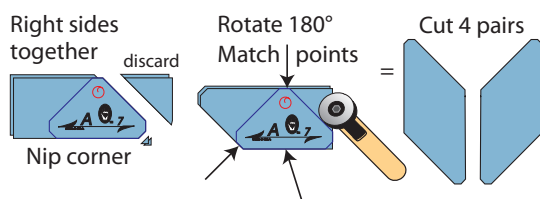
Identify the fabrics on page 191 from top to bottom as shown in the book. Add a sample of your fabric to the fabric key shown here:



### Cutting the Mirror Image Parallelograms

Parallelograms are directional. Except for hand dyes and most batiks, you cannot turn them over to point the "other" direction, so they must be cut right sides together for mirror image pieces.

1. Cut two strips  $1\frac{1}{4}$ " wide x 12" long on lengthwise grain and stack them **right sides together**. Cut 4 pairs of pieces  $2\frac{3}{4}$ " long (Log Cabin Ruler piece c).
2. Carefully align A-7 on one end of each pair of  $2\frac{3}{4}$ " strips and cut away the small exposed triangle of fabric.
3. Rotate the cut pieces  $180^\circ$  and reposition A-7 on the opposite end of the pairs of strip. All 3 corners of the template will align with cut edges of fabric. Cut away the exposed triangle of fabric.

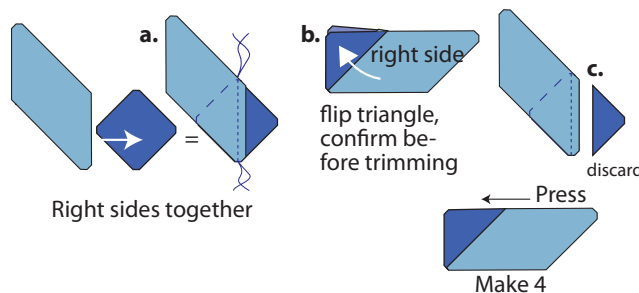


### Making the Parallelogram Units

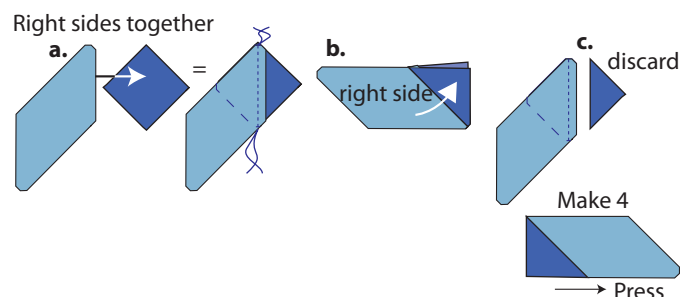
1. Usually, I would double-cut A-7 triangles to add to the ends of the parallelograms, but I decided to cut Log Cabin Ruler a squares ( $1\frac{1}{4}$ " ), 8 each from fabrics 2 and 3.
2. Divide the parallelograms into right and left stacks with fabric right side up. It is easier to piece correctly if you do all of one color on one side at a time.

Align one of the fabric 2 squares with a parallelogram, right sides together. Stitch from the parallelogram side so that you have an edge to guide the  $\frac{1}{4}$ " seam allowance. On the right side, fold the square at the seam to make a triangle and confirm size. With the wrong side up, trim away the excess portion of the square.

Press toward the triangle. Make 4.

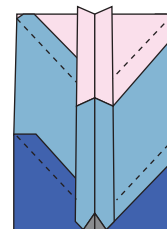


Make the mirror image units in a similar manner. Don't forget to flip and confirm size, then trim the excess fabric with the right side down. Make 4. Press seam allowances toward the parallelogram.



3. Add the fabric 3 squares to the opposite ends of the parallelogram units and trim the excess fabric in the same way. Press so the seams on the 2 sets of parallelograms go in opposite directions.

4. When all parallelogram units are completed, join pairs as shown in the book. Press the seam open.



### Making the Corner Units

1. To make the four patch units, cut 1 strip of each color  $1\frac{1}{4}$ " x 10". Join on one long side. Press toward the dark fabric. Cross-cut 8  $1\frac{1}{4}$ " units. Join into four patches. Swirl press.
2. From fabric 3, cut 8 strips  $1\frac{1}{4}$ " x 2" and from fabric 1 cut 4  $1\frac{1}{4}$ " squares Log Cabin Ruler piece a.
3. Pay careful attention to the orientation of the four patches and add strips and squares as you did for the Tracy block (FMM #46) and as shown in the book.

### Completing the Block

Arrange and join the units into 3 rows as shown in the book. Press rows 1 and 3 toward the corners and row 2 toward the center square. Join the rows. Press the final seams open.