

71 Mrs. Morgan

FMM 27

As seen in *The Farmer's Wife 1930s Sampler Quilt* book by Laurie Aaron Hird

From MARTI MICHELL Perfect Patchwork Templates Conversion Chart

For personal use in conjunction with the book and these From MARTI MICHELL Tools: Perfect Patchwork Template Set B, Product #8252, and Set D #8254. Optional: Set A to “true up.”



Mrs. Morgan Template	71A	71B	71C	71D	71E
is the same as FMM Sets B and D Template	D-29	B-14	B-13 cutting trick	B-13 cutting trick mirror image	D-28

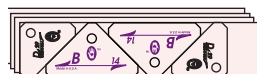
Observe grainline arrows on templates when cutting.

Cutting

1. Cut 4 D-28 squares.
2. From a 1½" x 8" strip, cut 4 “yellow” B-14 triangles.



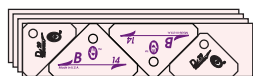
3. Cut 4 strips of “beige” fabric 1½" wide by 6½" long for the B-14 and the D-29 triangles. They can be stacked and cut together as shown, yielding 8 of each piece. You might start to cut this way:



BUT...Grainline Geek Alert!



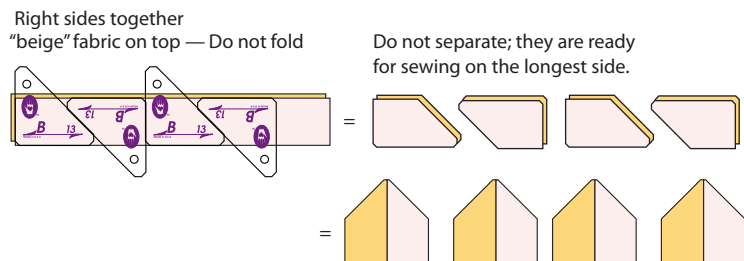
If you are a grainline geek like me, you will want to cut the 4 strips as shown below. Yield: 4 D-29 triangles with the grainline on the legs for the 4 corners of the block (pin these 4 together after cutting) and 4 triangles with the grainline on the hypotenuse for sewing to the mirror image pairs (shown in step 3, Making the Block).



Mirror Image Alert!

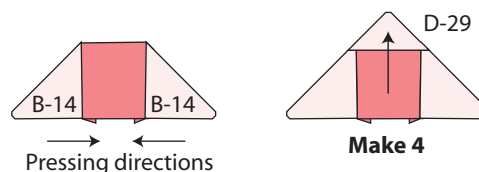
Cut 1 pair of strips 1½" wide x 10" long, right sides together.

To cut the 71C and 71D mirror image pieces, rotate B-13 on the 1½" strip and cut 4 pairs of pieces as shown. Do not separate the pieces after cutting.

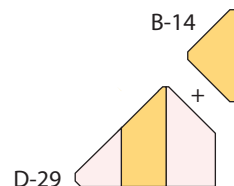


Making the Block

1. Join the large “beige” triangles to opposite sides of the D-28 squares. Press seam allowances toward the squares. If you cut like a grainline geek, unpin the 4 corner triangles. Add the D-29 triangles as shown to make 4 pieced triangle units like the block diagram, upper left unit, in the book. Press toward the small triangle.



2. Join the modified B-13 pieces as shown in “Mirror Image Alert!” and press seam allowances toward the “yellow” fabric.
3. Add the remaining D-29 and B-14 triangles to the units made in step 2 to make pieced triangles. Press toward the triangles.



Use FMM triangle template A-2 to confirm size. (That's right, these B and D template pieces are being joined to make 3½" square units, the typical Set A size!)

4. Arrange and join the pieced triangle units to make 3½" squares, including seam allowance. Press the seam allowances open. Use FMM square template A-1 to confirm size.
5. Arrange the squares and join to complete the block, pressing open.