

2 Aimee (Or alternate block, Alta)

As seen in *The Farmer's Wife 1930s Sampler Quilt* book by Laurie Aaron Hird

From MARTI MICHELL Perfect Patchwork Templates Conversion Chart

For personal use in conjunction with the book



Paper Piece Aimee

Aimee is really close to being From Marti Michell template friendly, but it isn't and it is very nicely broken into paper piecing units on the CD in the book.

Or Make a New Block, Alta, Named After Marti's Mom, with FMM Tools

Since I like to make as many of my Farmer's Wife blocks with our templates as possible, I'm going to substitute a 4" Kaleidoscope block on point with a narrow frame and then use triangle A-6 to make Birds in the Air corner triangles.

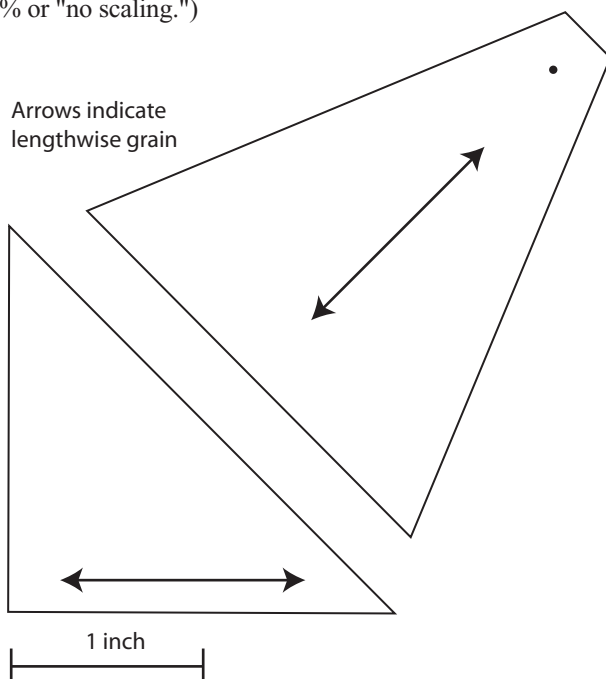
FMM Template Set A	A-6—Cut 12 background fabric Cut 4 contrasting fabric
FMM Small Kaleido-Ruler #8641 or Paper patterns below	

Observe grainline arrows on tools when cutting.

Full Size Pattern Pieces

including 1/4" seam allowances

If you are using the Kaleido-Ruler, follow instructions for cutting a 4" finished Kaleidoscope block. (Be sure your printer is set to 100% or "no scaling.")



Cut 1 strip each of background and contrasting fabrics, 2 1/2" x 7".
Cut 4 pairs of Kaleido-Angles from the strips.

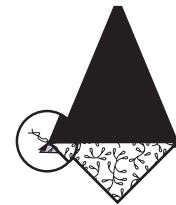


Cut 1 strip for corner triangles 2" x 4 1/2". Cut 4 Kaleidoscope corner triangles.

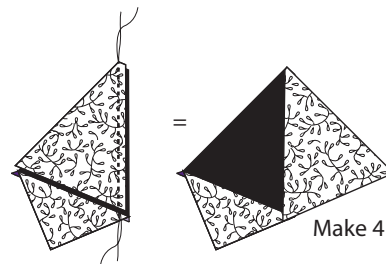


Making the Center and Narrow Frame

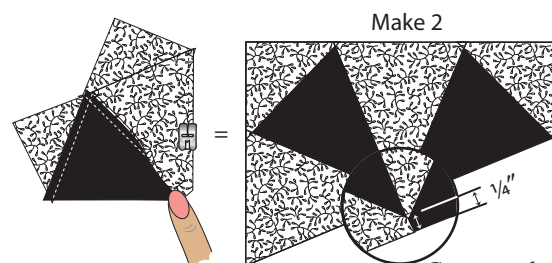
1. Add corner triangles to 4 contrasting Kaleido-Angles. Press toward triangles.



2. Add a second Kaleido-Angle to the units made in step 1, with the new Kaleido-Angle on top. Stitch from narrow to wide end. Press toward the new triangle. This is one quarter of the center.

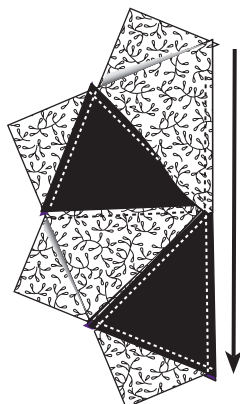


3. Put 2 quarters right sides together and stitch from the outside edge to center. As you approach the center, lift the seam allowance so it will not be stitched down. Stitch just to the first seam line. Stitch in place or shorten stitches to secure the seam. Press so that seam allowances all go in the same direction.



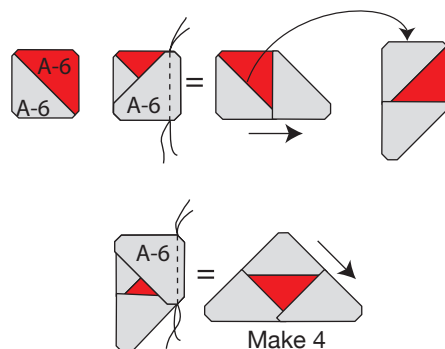
Continued on page 2

4. Put 2 halves right side together. Seam allowances should butt together. To test, lengthen machine stitch and do an inch "basting" stitch across the center section of the seam. Remove from machine and open pieces. If the points meet nicely, go back and make a complete center seam. If not, take out the basting and try again.



5. Press all seams in the same direction in a swirl. A few stitches may pop; that's okay.
6. True up to 4½" square.
7. Add strips cut ⅝" wide by 4½" to 2 opposite sides. Press toward the strips. Add strips ⅝" x 5¼" long to 2 remaining sides. True up to 4¾", if necessary. If you own Template Set C, this pieced square should be the size of template C-15.

8. Make 4 Birds in the Air corner units as shown. All the triangles are cut with template A-6.



9. Add the Birds in the Air corners to opposite sides of the framed center block. Press toward the triangles. Add the other 2 Birds in the Air units to complete the Alta block.

