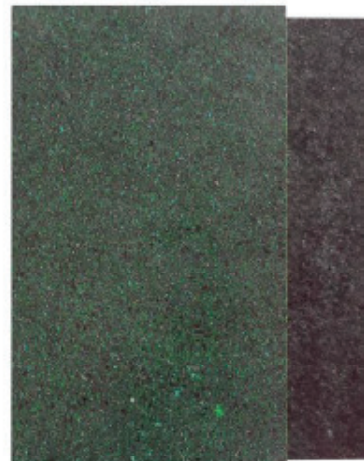


<b>Dimensions</b>	2440 x 1220 x 19 mm (cut-to-size)
<b>Weight</b>	approx. 30 kg
<b>Density</b>	approx. 589 kg/m <sup>3</sup> (see appendix)
<b>Stiffness</b>	0.35 GPa at 23 °C (see appendix)
<b>Colour</b>	typical colour of board – speckled black or green
<b>Coefficient of expansion</b>	HI: 3 - 4 mm/2.4m/10°C SF: 1.5 - 2 mm/2.4m/10°C
<b>Weather resistance</b>	Weather proof and will not rot - ideal for outdoor use. Impact strength increases, the wetter it becomes. SF requires a coating protection from UV.



### Using P2 Storm Board

<b>Coating</b>	For the rendered look, non slip and UV protection, we recommend CorkSol coating.
<b>Fire Retardancy</b>	For walls – CorkSol cork coating certified to Euroclass Bs2D0 or CorkSol stone coating certified to Euroclass Bs1D0.
<b>Cutting</b>	You can cut Storm Board with a hand saw, jigsaw, router, bench saw and skill saw. We suggest running saws at slower speeds to avoid melt and with blades recommended for plastic cutting.
<b>Drilling</b>	Storm Board drills well with wood drill-bits and can be countersunk.
<b>Routing</b>	Storm Board can be CNC routed, we suggest using tungsten carbide tooling.