

Product Specifications

Style Number	VV017	
Construction	Solid Polymer Core	
Edge Profile	Micro Bevel	
Nominal Dimensions	7" wide, 48" long	
	US Units	Metric Units
Actual Product Width	7.2"	18 cm
Actual Product Length	48.03"	122 cm
Wear Layer Thickness	20 mil (0.02")	0.5 mm
Overall Product Thickness	0.196"	5 mm
Core Thickness	0.157"	4 mm
Attached Underlayment	Attached Cork	
Attached Underlayment Thickness	0.039"	1 mm
Finish	UV Acrylic	
Installation Methods	Floating or Direct Glue	
Profile	Angle/Tap	
Country of Origin	Imported	

Packaging

Area per Box	28.84 sq ft	2.67 sq m
Pieces per Box	12 pcs	
Weight per Box	48.61 lbs	22.04 kg
Boxes per Pallet	50 boxes	



1001 Chesapeake Oak

Colors



COREtec Pro Classics VV017



Performance

Static Load (ASTM F970)	Passes (Modified), *500 lbs
Residual Indentation (ASTM F1914)	Passes
Resistance to Heat (ASTM F1514)	Passes
Resistance to Light (ASTM F1515)	Passes
Resistance to Chemicals (ASTM F925)	Passes
Radiant Panel (ASTM E648)	Passes, Class I
Slip Resistance (ASTM D2047)	ADA compliant

Test Reports may be included or listed by the manufacturing/inventory style number as opposed to the noted selling style number.

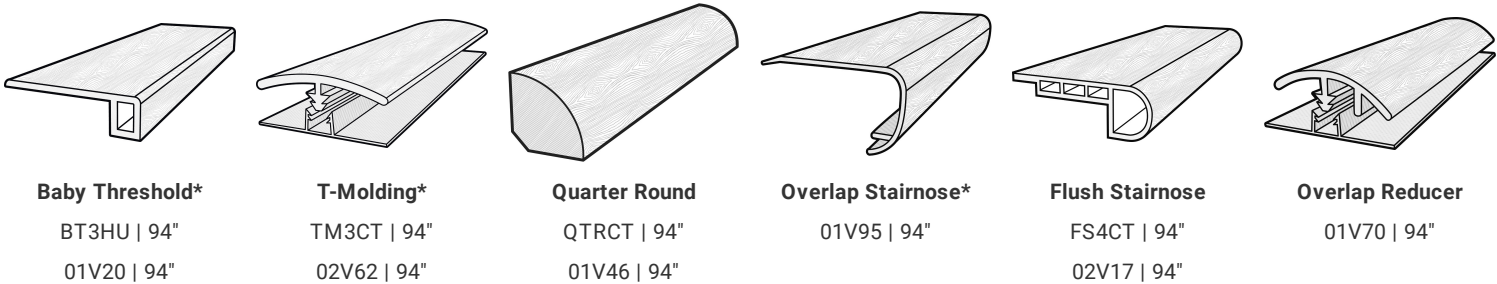
Warranties

- USF Lifetime
- [Residential Resilient Limited Warranty - Defects, Wear, Waterproof, Petproof](#)
- USF 15 Year Heavy Commercial

Certifications

GreenGuard (Certification, Gold, Private Label) Certified

Coordinating Trim



Baby Threshold*	T-Molding*	Quarter Round	Overlap Stairnose*	Flush Stairnose	Overlap Reducer
BT3HU 94"	TM3CT 94"	QTRCT 94"	01V95 94"	FS4CT 94"	01V70 94"
01V20 94"	02V62 94"	01V46 94"		02V17 94"	

*Packaged with molding track



COREtec Pro Classics VV017

Stair Tread



Stair Tread
03Z70 | 48"