

STEAK KING WHOLESALE

2024



Chilled Beef

WAGYU, ANGUS, Grass- and Grain- Fed



Premium Australian Beef

100-Day Grain-Fed Black Angus



CHILLED CUBE ROLL / RIBEYE
+/- 5kg/piece
15kg per case



CHILLED HANGING TENDER
+/- 2kg/piece
18kg per case



CHILLED STRIPLOIN / SIRLOIN
+/- 4kg/piece
15kg per case



CHILLED BONE IN STRIPLOIN
1kg/piece
20kg per case



CHILLED TENDERLOIN / FILLET (SS OFF)
+/- 1.8kg/piece
15kg per case



FROZEN BLACK ANGUS MINCE
1kg/pack
15kg per case



CHILLED TOPSIDE (LEAN MINCE GROUND)
+/-10kg/piece
20kg per case



OP RIBS
+/-10kg/piece



CHILLED D-RUMP U/C REMOVED (RUMP CAP / PICANHA)
+/- 6kg/piece
20kg per case



TOMAHAWK
4-6kg/piece



CHILLED FLANK
+/- 2kg/piece
18kg per case

Products are readily available/in stock, with larger volumes of specific cuts/portions/finishing available on request. We highly recommend sharing monthly forecast volumes at the point of menu planning to ensure timely supply.



Chilled Australian Beef

150 to 200-Day Grain-Fed Australian Black Angus



CUBE ROLL / RIBEYE M2/M3

+/- 5kg/piece
17kg per case



STRIPLOIN / SIRLOIN M2/M3

+/- 5kg/piece
19kg per case



D-RUMP / RUMP CAP M2/M3

+/- 6kg/piece
20kg per case



POINT END BRISKET M3/M5

+/- 8kg/piece
20kg per case



SHORTLOIN M2/M3

+/- 10kg/piece 20kg per case

T-Bone 1kg/pc

Porterhouse 1kg/pc



Chilled Australian Lamb

Australian Grain Fed Lamb



LAMB RACK CAP OFF - FRENCHED

+/- 800g/piece
15kg per case



BONE IN LAMB LEG CHUMP OFF

+/- 2kg/piece
15kg per case



BONELESS LAMB LEG

+/- 1 – 1.3kg/piece



BONELESS LAMB SHOULDER

+/- 2kg/piece
15kg per case



LAMB SHANK

+/- 1kg/piece
12kg per case

Products are readily available/in stock, with larger volumes of specific cuts/portions/finishing available on request. We highly recommend sharing monthly forecast volumes at the point of menu planning to ensure timely supply.

Premium Australian Beef

400-Day Grain-Fed Wagyu



CHILLED BONE-IN RIBEYE

M6/7 10kg/piece



CHILLED PORTERHOUSE

M6/7 & M8/M9
1kg /piece



CHILLED BONE-IN SHORTLOIN

M4/5 11kg/piece



CHILLED PICANHA (RUMP CAP)

M6/7 & M8/M9
2kg/piece



CHILLED BONELESS CUBEROLL/RIBEYE

M4/5 5-6kg
M6/7 5-6kg
M8/9+ 5-6kg



CHILLED D-RUMP

M6/7 & M8/M9
4-5kg/piece



CHILLED STRIPLOIN/SIRLOIN

M4/5 5-6kg
M6/7 5-6kg
M8/9 5-6kg



CHILLED FLANK

M6/7 & M8/M9
2kg/piece



CHILLED HANGING TENDER

M6/7 & M8/M9
1-1.5kg /piece



CHILLED CHEEK

M6/7 & M8/M9
1kg /piece



CHILLED TENDERLOIN (SS OFF)

M6/7 & M8/M9
1.5-2kg/piece



CHILLED OXTAIL

M6/7 & M8/M9
1kg /piece



Like its gemstone namesake, Black Opal Wagyu is the most sought after and desirable Wagyu on the Australian market. Its rich, buttery flavour and melt in the mouth texture gives chefs a product that their clients will remember and seek out simply for the eating experience.

Products are readily available/in stock, with larger volumes of specific cuts/portions/finishing available on request. We highly recommend sharing monthly forecast volumes at the point of menu planning to ensure timely supply.

Warehouse & Processing Facility



Steak King Wholesale offers the same exceptional quality imported meats and seafoods that have made us a firm favourite with Hong Kong shoppers since launching in 2021.

Competitive bulk pricing plus commercial dry-ageing and portion cutting are now available at our new, 12,000 sq ft finishing facility in Wong Chuk Hang - as is custom production, tailored to the needs of Hong Kong's foodservice professionals. Contact us for further details of our wholesale range and join us for a tour of our facilities.


Artisanal Products



IRISH PORK SAUSAGE
+/- 100g/piece – 400g/pack
2kg per case



AUSSIE WAGYU SAUSAGE
+/- 100g/piece – 400g/pack
2kg per case



AUSSIE WAGYU BURGER MEAT
Not Formed patties made of Wagyu Rump, Chuck, brisket
5kg per bag

Premium Packaged Range



STEAK KING Wholesale 600g
* Hand Made *
GOURMET SAUSAGES

LAMB SAUSAGES WITH MINT, HONEY & ROSEMARY
ALL NATURAL AUSTRALIAN GRASS FED LAMB WITHOUT ANTIBIOTICS OR STEROIDS
BEST STORED 1-2°C
GLUTEN FREE
HAND MADE PRODUCT WEIGHT MAY VARY ±10%



STEAK KING Wholesale 600g
* Hand Made *
GOURMET SAUSAGES

IRISH PORK SAUSAGES
ALL NATURAL AUSTRALIAN FREE RANGE PORK WITHOUT ANTIBIOTICS OR STEROIDS
BEST STORED 1-2°C
GLUTEN FREE
HAND MADE PRODUCT WEIGHT MAY VARY ±10%



STEAK KING Wholesale 600g
* Hand Made *
GOURMET SAUSAGES

HOT CHIPOTLE CHICKEN SAUSAGES
ALL NATURAL FREE RANGE CHICKEN WITHOUT ANTIBIOTICS OR STEROIDS
BEST STORED 1-2°C
GLUTEN FREE
HAND MADE PRODUCT WEIGHT MAY VARY ±10%



STEAK KING Wholesale
Dry Aged ANGUS BURGER
6 x 150 grams
WE HAVE USED THE FINEST BLACK ANGUS CHICKEN BREAST TO MAKE ALL THE FLECK FOR 2018'S HORN FARMER AND COOKING CORRECTLY TO CREATE THE ULTIMATE BURGERS POTTY!
THE BAY WAGYU PATTIES WILL TAKE OUT MOST OF THE FAT IN THE MEAT WHICH MAKES THEM SUPERIOR TO OTHERS AND THE TEXTURE MORE JUICY.
BEST STORED -18°C
SERVING SUGGESTION



STEAK KING Wholesale
Tasmanian SALMON BURGERS
6 x 150 grams
HAND CROPPED TASMANIAN SALMON, COMBINED WITH LEMON JUICE, MAYONNAISE, BUN AND FRESH SPRING ONION HEADS CREAMS AND COMBINED WITH POTTY OR CHILLI FOR THE PERFECT NON-MEAT BURGERS.
TRY SERVING IT ON A TOASTED BUN WITH LETTUCE, CUCUMBER AND BAKED POTATO ON TOP!
BEST STORED -18°C
SERVING SUGGESTION



STEAK KING Wholesale
FIRECRACKERS SPICY SAUSAGES
WAGYU BEEF & GHOST CHILI SAUSAGES
MADE WITH DAWSON'S HOT SAUCE



STEAK KING Wholesale
FIRECRACKERS SPICY SAUSAGES
FREE RANGE LAMB SHAWARMA SAUSAGES
MADE WITH DAWSON'S HOT SAUCE



STEAK KING Wholesale
FIRECRACKERS SPICY SAUSAGES
FREE RANGE CHICKEN SAUSAGES WITH RED HABANERO HOT SAUCE



STEAK KING Wholesale
Lamb BURGER
6 x 150 grams
WE HAVE USED THE FINEST CORNFOR LAMB SHOULDER AND COMBINED WITH POTTY WITH A MILD OF BUN, AND BAKED BY PLUCK A TOUCH OF HOTTY TO CREATE THE PERFECT LAMB BURGERS!
GIVE US THE BEST OF BOTH WORLDS TOASTED BUN WITH POTTY BUCKET.
BEST STORED -18°C
SERVING SUGGESTION

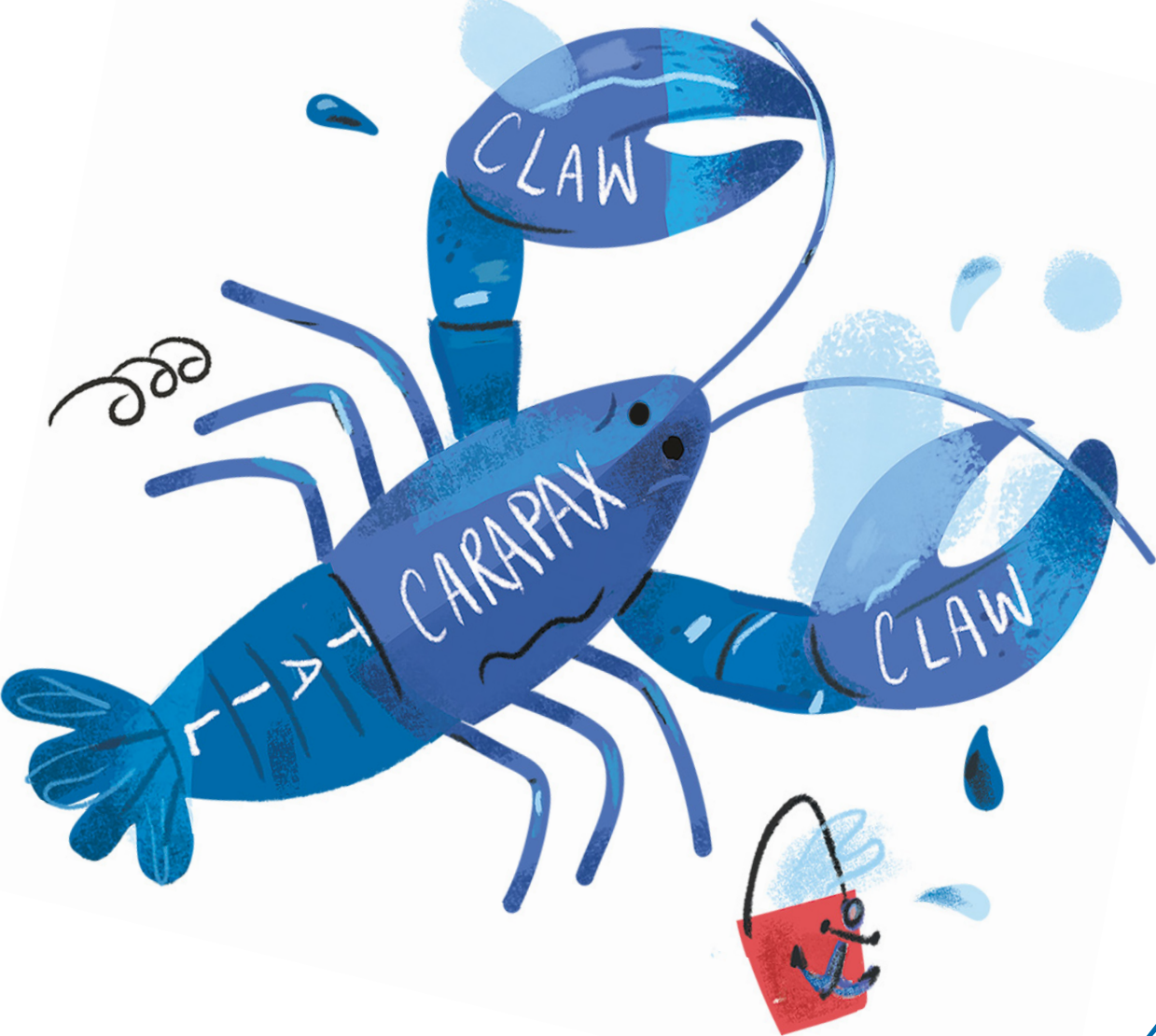


STEAK KING Wholesale
Chicken BURGER
6 x 150 grams
WE HAVE TAKEN THE FINEST CHICKEN TENDER AND COMBINED WITH POTTY, POTTY AND BAKED BY PLUCK A TOUCH OF HOTTY TO CREATE A BURGER IN MEAT BALL THAT IS PERFECT FOR THE BUN ON THE PAN.
BEST STORED -18°C
SERVING SUGGESTION

Products are readily available/in stock, with larger volumes of specific cuts/portions/finishing available on request. We highly recommend sharing monthly forecast volumes at the point of menu planning to ensure timely supply.

Note 20kg MOQ.

Chilled/Frozen Seafood, Fillets, Shellfish



Fish & Seafood

Vacuum-Packed Frozen Fillets



**SEA-FARMED BARRAMUNDI
SKIN ON**

150g/piece
4 pieces/pack – 600g/pack



**YELLOW FIN TUNA STEAK
SKIN OFF**

150g/piece
4 pieces/pack – 600g/pack



**BLACK SEABASS
SKIN ON**

150g/piece
4 pieces/pack – 600g/pack



**WHITE SNAPPER
SKIN OFF**

150g/piece
4 pieces/pack – 600g/pack



**MAHI MAHI
SKIN OFF**

150g/piece
4 pieces/pack – 600g/pack



**PINK SNAPPER
SKIN OFF**

150g/piece
4 pieces/pack – 600g/pack



**RED GROUPE/CORAL TROUT
SKIN ON**

150g/piece
4 pieces/pack – 600g/pack



**BUTTERFLIED SARDINES
SKIN ON**

150g/piece
80g/piece – 500g/pack



**SWORDFISH STEAK -
SKIN OFF**

150g/piece
4 pieces/pack – 600g/pack

PACKAGING PER CASE -
150g/piece, 4 pieces/packs, 600g/pack,
42 packs/case, 25.2kg/case

180g/piece & 220g/piece

Available By Request



Fish & Seafood



Frozen Tasmanian Salmon

4-5kg / piece
20kg per case

Tassal's fresh premium Atlantic salmon can be cooked whole to serve for your family or presented on a platter for the perfect entertaining occasion. Salmon is one of the best sources of Omega-3 fatty acids, rich in protein and contains necessary B vitamins and minerals needed to maintain a healthy diet.

Product of Australia. Tassal salmon is responsibly grown in Tasmanian waters with third party aquaculture accreditations. Contains no artificial colors, flavors or preservatives.



Frozen Salmon Fillet - Skin On

1.5 – 1.7kg / piece
20kg per case

Salmon Fillets are available skin off or skin on and range in sizing from 1.5 - 1.7kg per fillet. Depending on your needs, our salmon fillets are carefully packed layered or vacuum packed to your convenience.



Seafood



RAW SLIPPER LOBSTER: WHOLE/HALVES
1-200g/piece



RAW MUD CRAB HALVES
(M-XXL)



LOBSTER & CRAB MEAT:
1kg/pack





Provisions

Coffee



**DR SUTTON'S COFFEE
HOUSE BLEND
(ETHIOPIAN & BRAZILIAN)**

500g
1.3kg



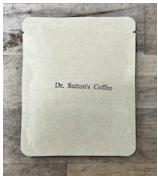
**DR SUTTON'S COFFEE
DECAF COLUMBIAN
(SWISS METHOD)**

500g
1.3kg



**DR SUTTON'S COFFEE
PERUVIAN**

500g



**DR SUTTON'S COFFEE
HOUSE BLEND DRIP BAGS**

14g



ECONOMY COFFEE BEANS

5LB/BAG
10kg per case



Dr. Sutton's Coffee sources a wide variety of beans from all corners of the coffee producing belt, acquiring the best quality beans by working closely with individual farmers and communities.

Beans are roasted weekly with the Hong Kong palate in mind, with the House Blend displaying sweet, nutty and toffee flavour notes with a hint of fruit.

Eggs



CHILLED LIQUID EGG WHITE

5kg per case



FROZEN LIQUID EGG WHITE

5kg per case



CHILLED LIQUID EGG YOLK

5kg per case



FROZEN LIQUID WHOLE EGG

5kg per case

Lemon



LEMONS (S)

90 pieces per case

LEMONS (M)

113 pieces per case

LEMONS (L)

138 pieces per case

About Steak King Wholesale



How to order?

Contact: Ricky Hui

Telephone: (+852) 9206 2711

Email: sales@steak-king.com

Business hours: 10am-6pm Monday to Friday, including public holidays.

Kindly note that processed products require 24 hours' prior notice.



Payment terms

Cash on delivery, wire-transfer or online banking payment options are available. 30-days credit terms may be offered, based on the nature of the client business and subject to review by our finance team.



Delivery

Note our minimum order of **HK\$1,500** for delivery.

Please order before 4pm for delivery following working day

Each order comes with an invoice/ delivery note. The duplicate copy must be signed and returned to our company.



Self pick up

Self pick-up is available from our head office & warehouse at:

Room B1, 2/F Block B,
Vita Tower,
29 Wong Chuk Hang Road,
Aberdeen,
Hong Kong.

Kindly provide advance notice of collection.

www.steak-king.com/wholesale

STEAK KING WHOLESALE

2024

