

Pedal Kayak Assembly Booklet

Congratulations on buying your Reel Yaks pedal kayak!! Note we also have assembly videos on our website at Reelyaks.com. If you have any questions on your Reel Yaks kayak assembly, then please email us at info@reelyaks.com or call us on 855 202 5035.

There are **five key** pieces of assembly to be done:

- Pedal drive
- Rudder
- Stadium seat
- Paddle
- Fishing rod holder

First step is to unpack your kayak which should come with an outer sheet plastic, cardboard layer and bubble plastic inner layer. Please ensure to dispose of these materials safely in particular the plastic.



Each package will have:

- 1 X kayak
- 1 X rudder
- 1 rudder bracket
- 4 x rudder bracket screws (2 x steering wire pinch screws are attached to the wires in the rear)
- 1 x rudder security (cotter) pin
- 1 X paddle
- 1 x pedal drive unit
- 1 x pedals (2)
- 1 x spare fins (2)
- 1 x stadium chair
- 2 x rear seat brackets
- 2 x rear stadium chair screws (front brackets have the screws with handles attached)
- 1 x fishing rod holder
- 1 x fishing rod rail support

RY REEL YAKS

2 x fishing rod rail support screws

The larger items will be secured in the main cockpit area: paddle drive unit, paddle drive pedals, spare fins, paddle and stadium chair.

The smaller items will be in the forward cockpit hatch: rudder support, rudder screws, stadium chair screws, fishing rod holder, fishing rod support, fishing rod support screws and allen wrench.



The rudder will already be strung (for putting in our pulling out of the water) and ready for use and secured in the rear hatch behind the seat and underneath the internal basket.



Replace the internal basket when you have removed the rudder.



RY REEL YAKS

Pedal Drive Assembly

For the pedal drive assembly ensure that you have the main unit with flaps (x1) attached and the pedals (x2).

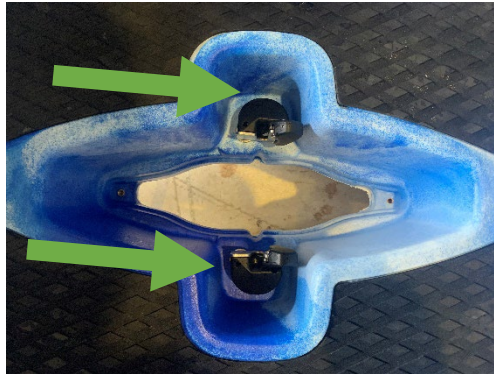


Note the numbering on the top of the pedal drive unit, to know which is forward, '1' will be at the bottom (closest to the seat). For the time being don't worry about the numbering as this will help you set the correct leg length later on. Insert each pedal (green arrow) with the main bolt fully un-screwed (orange arrow), and while holding the red handle depressed. Aim for insertion around '3' on the top of the unit so each pedal is at the same locked location. The insertion will deliver a tight fit and once the spring-loaded ping beneath the red handle pops in then go ahead and secure the main bolt again. It's always worth checking all the nuts on the drive are tight before using if for the first time e.g.: brass nuts, etc. Loctite while not required is always a good preventative measure if you have any concerns.



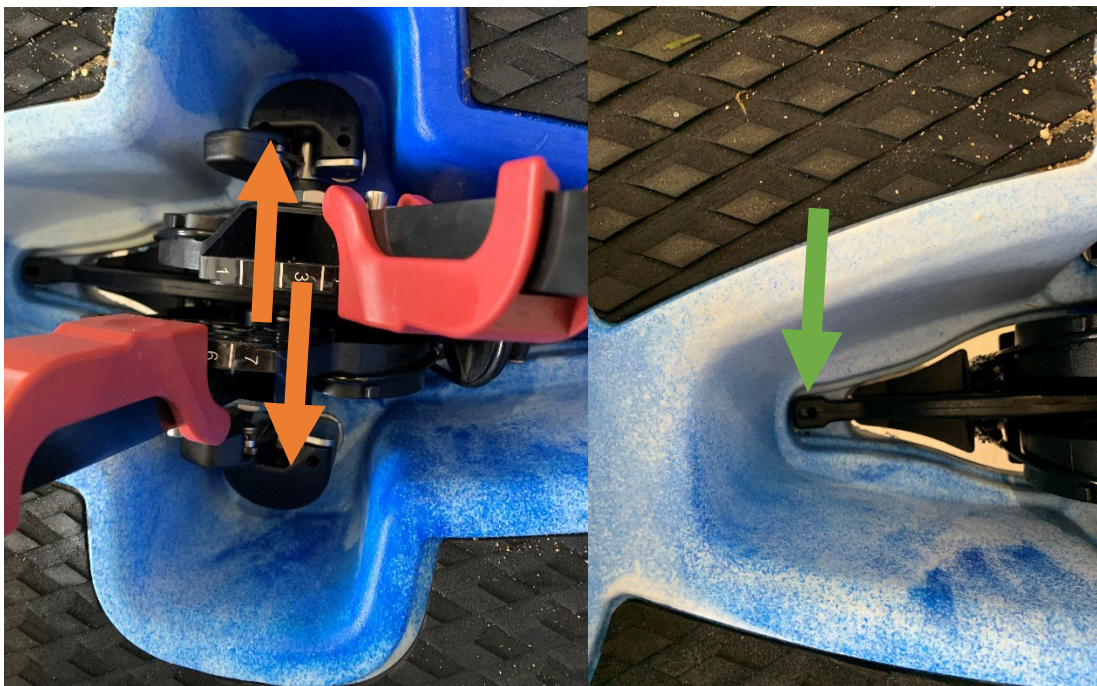
RY REEL YAKS

Once the pedals have been inserted into the drive unit, then drop the pedal drive into place, and the kayak locking pins should lock over the pins.



Note sometimes it requires pulling the pedals firmly to the left and right (**orange arrows**) each time when inserting the drive for the pins to lock in place. There are also options to secure the drive more permanently with screw holes fore and aft (**green arrow**) of the drive.

However you do need to keep this in mind when beaching the kayak, by always pushing forward on one of the pedals to ensure the flaps are flared and being careful when dragging the kayak up the beach.

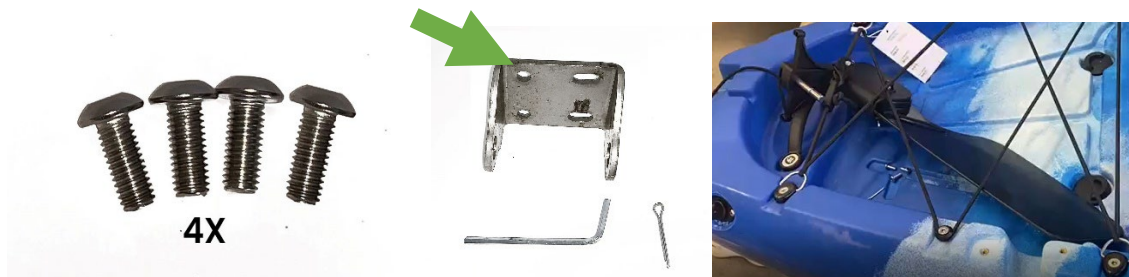


Once you are in the kayak on the water you can then adjust the red handles on the pedals to fit your leg length.

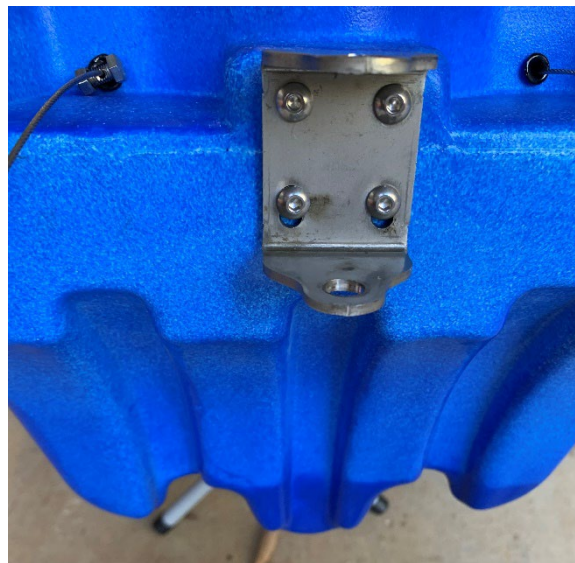
RY REEL YAKS

Rudder Assembly

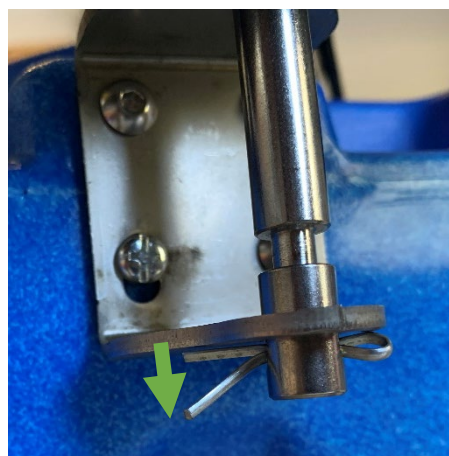
For rudder assembly you will require the 4 short screws, rudder bracket, security pin, allen wrench and the rudder which should be in the cargo bay (sometimes it can be in the rear hatch).



Place the two holes (green arrow) of the bracket at the top when securing the bracket to the back of the kayak. And insert the 4 screws with the allen wrench.



Next, ensure your rudder is untangled and the lines run free. Put the pin of the rudder through the rudder bracket holes. Check that the raising and lowering of the rudder operates smoothly. Next put in the rudder security pin through the hole at the bottom of the rudder pin. Using a knife, screwdriver or pliers open the security pin ends (green arrow) to prevent losing the rudder, through the pin popping out.



RY REEL YAKS

Next grab hold of the rudder steering handle on the left side of the kayak near where the seat would be located. Pull the rudder handle all the way left and then all the way right, gauge where the centre point of the motion is, usually this is parallel to the centre line of the kayak. Leave the rudder steering in the approximate centre spot.

Note the steering screws will already be secured to the wires at the back of the kayak, they are not in the parts packets. Next remove the butterfly nuts (**Yellow arrows**) from each rudder wire and put the bolts through each side of the rudder. Put the butterfly nuts back on so that the rudder is in the middle and follows the centre line of the kayak. Adjust the rear nuts (**Orange arrows**) to ensure proper alignment and to moderately firm fit on the steering. The steering wires should have a little bit of slack for ease of turning and to ensure minimal wear and tear where they enter the kayak.

Then run the rudder steering handle through the full range while watching the rudder and the rudder should respond according to your movements, Adjust as needed.



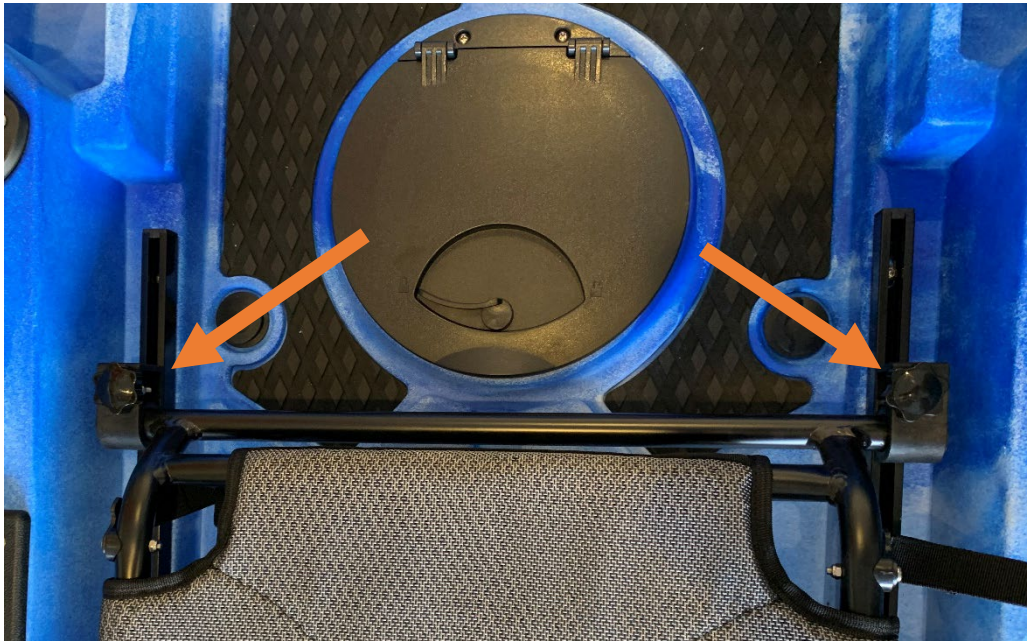
RY REEL YAKS

Stadium Chair Assembly

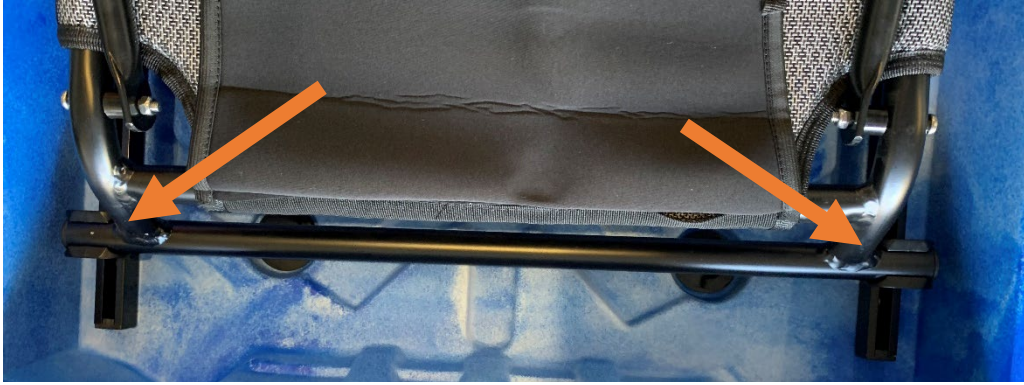
For the stadium chair assembly you'll need the 2 X long screws, black seat brackets and allen wrench. In each seat rail you will have two slider receivers in which to you can secure your seat. Move one to the back of the kayak for each rail and screw in the black bracket in each.



Sit the back bar of the seat on top of the brackets, but don't pop them in yet. Screw the front of the seat into the two front slider receivers.



And then push the back bar down into the back seat brackets to secure that.



Lastly connect and secure the two side straps which hold the back of the seat upwards. Secure this in a slightly off of 90 degree upright position, this can be further adjusted once you're on the water. Also remember to take your allen wrench on your first couple of outings in case you want to further adjust your seat location.

Paddle Assembly

The paddle assembly is super simple, just depress the button and pop it into the desired hold (3 locations to choose from) to get the preferred orientation of your blades. Then use the paddle stretch cord to secure it. Remember not to leave it attached like that when the kayak is travelling on your car or truck.



RY REEL YAKS

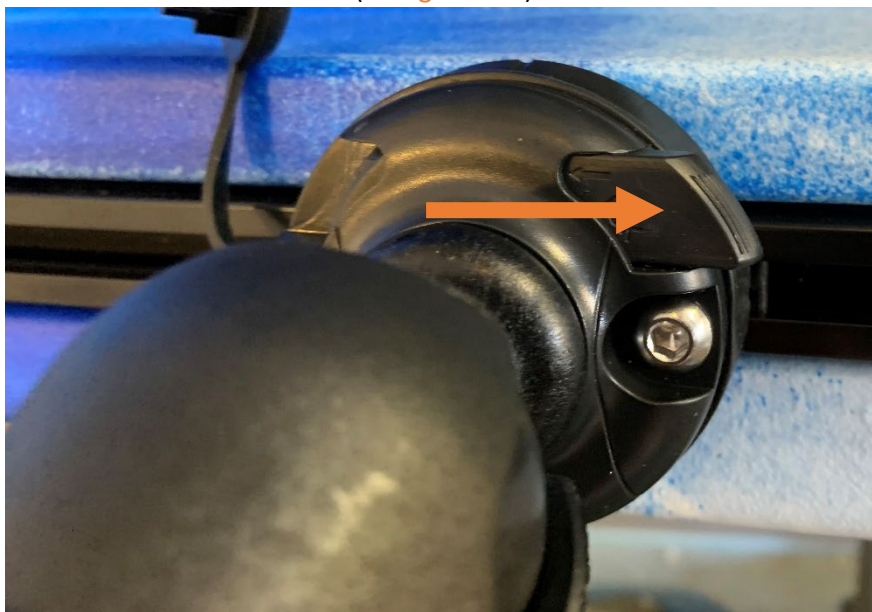
Fishing Rod Holder Assembly

The rod holder assembly requires the: rod holder, the rod holder bracket (3 pieces), 2 x screws and the allen wrench.



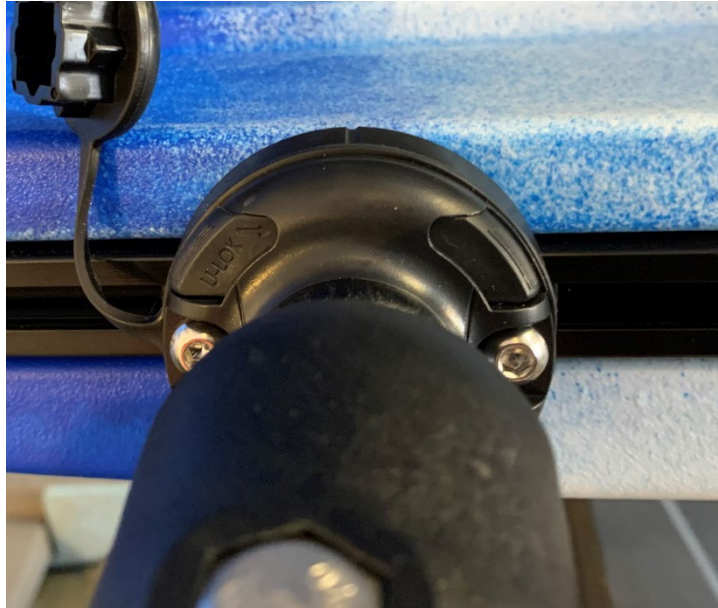
Combine the three black round pieces together with the bottom, middle and top as indicated above. Decide which rail in the cockpit you want to secure it to and move the slider receivers apart the approximate width of the screw holds and insert the screws.

Next insert the fishing rod holder into the now secure base by 'opening' the base as indicated below
(orange arrow)





Next close the slider to lock the fishing rod holder in place.



You should now be ready to hit the water!!

And don't forget to fill out the warranty form on our site.

And a reminder if you have any questions or concerns in respect of your Reel Yaks kayak then please email us at info@reelyaks.com or call us on 855 202 5035.

If you are looking for any accessories to go with your Reel Yaks kayak such as a trolling mount, bimini, etc. then please visit us at REELYAKS.COM