

NINE-O

CYCLING

CUSTOM CYCLING APPAREL

2020

NINE-O IS A DIVISION OF

NIKO
NIKO APPAREL SYSTEMS



*PROUDLY MADE
IN CANADA*



SALES@NINE-0.COM
905-318-0845
61 HEMPSTEAD DR.
HAMILTON, ON



OUR ADVANTAGE

Our success has been built on our reputation to provide excellent customer service and to deliver hassle-free, high quality products on time.

At Nine-O we pride ourselves in sourcing the finest materials from around the world and manufacturing the perfect kit locally, right here in Canada. 🍁

We excel in creating an intimacy with clients which cannot be found anywhere else. We have an extremely nimble and flexible team which works individually with every client in order to ensure our final product is to the exact specification of the order.

We can react quickly and offer custom sizing and designs for clients wanting the ultimate performance experience.

Nine-O is your gateway to endless design possibilities that represent the pinnacle of local cycling jersey manufacturing.



MADE IN  CANADA

WWW.NINE-O.COM

NINE-O

AEROLITE

JERSEY

(pg. 7)

NEW

CR

BIB SHORTS

(pg. 15)



TABLE OF CONTENTS

JERSEYS	5-14
SHORTS / BIBS	15-17
SKIN SUIT	18
TRI SUIT	19-20
OUTER WEAR	21-23
ACCESSORIES	24
TEMPLATES	25-28
SIZING	29
ORDER PROCESS	30

WWW.NINE-O.COM





ELITE T-3

NC-ET3J

Racer fit and engineered for hi-intensity level riding and racing. Comfortable and lightweight, fit for any serious rider.

SLEEVE STYLE

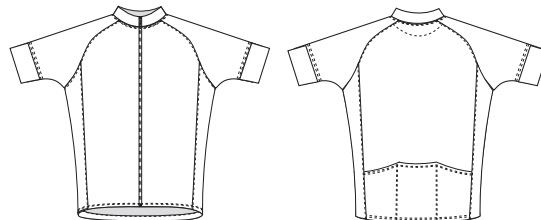
- Short Sleeve

SIZING

Mens XS - 2XL

Women XS - 2XL

TEMPLATE



FABRIC

MICRO POLY

GSM : 150
86% Micro Polyester
14% Lycra

CREPE

GSM : 120
100% Polyester
🇮🇹 Fabric Made in Italy

FEATURES

- 1 Triple Back Pocket
- 2 Silicone Gripper Back Hem
- 3 Extended Short Sleeve
- 4 Large Panel Compression Cuffs
- 5 Camlock Zipper
- 6 Front Panel Compression Grip





AEROLITE

NC-AL17

The Aerolite jersey offers the best in terms of lightweight and high performance. A comfortable jersey with excellent breathability.

SLEEVE STYLE

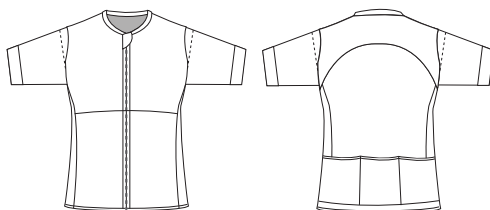
- Short Sleeve

SIZING

Mens XS - 3XL

Womens XS - 2XL

TEMPLATE



FABRIC

MICRO POLY

GSM : 150
86% Micro Polyester
14% Lycra

AVATAR

GSM : 75
93% Micro Polyester
7% Elastane

🇮🇹 Fabric Made in Italy

FEATURES

- 1 Triple Back Pocket
- 2 Grip Compression Back Hem
- 3 Ultra Lightweight for maximum breathability



CAST INC

NINE-O

W

WASTRELS

WASTRELS

WASTRELS
SUPER
CRAWL

WASTRELS
HEALTH

NINE-O



Reflective Flatlock
for improved
visibility at night

ESCADRILL

NEW

NC-ES17

The Escadrill is an enhanced version of the Ventura Pro, featuring a triple back pocket and reflective flatlock back seams to provide extra visibility safety. Designed to be perfectly fitted while not being constrictive to movement.

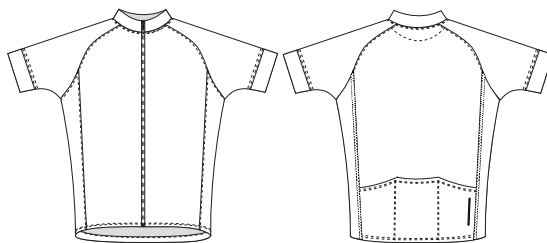
SLEEVE STYLE

- Short Sleeve
- Long Sleeve

SIZING

Mens XS - 3XL
Womens XS - 2XL

TEMPLATE



FABRIC

DALLAS

GSM : 135
100% Micro Polyester
Fabric Made in Italy

FEATURES

- 1 Triple Back Pocket
- 2 Silicone Grip Elastic Hem
- 3 Camlock Full Zipper
- 4 Reflective Flatlock Back Seams
- 5 4" Back Zippered Pocket





VENTURA PRO

SS: NC-VP22 LS: NC-VP44

The Ventura Pro jersey is a form fit jersey and has been a favourite with riders of all levels.

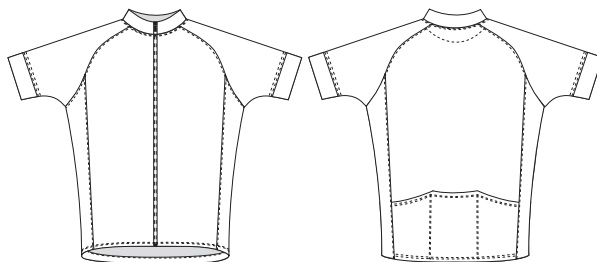
SLEEVE STYLE

- Short Sleeve
- Long Sleeve

SIZING

Mens XS - 3XL
Womens XS - 2XL
Youth S - XL

TEMPLATE



FABRIC

CREPE

GSM : 120
100% Polyester
Fabric Made in Italy

FEATURES

- 1 Triple Back Pocket
- 2 Silicone Grip Elastic Hem
- 3 Camlock Full Zipper
- 4 Grip Compression Cuffs

* SS & M/W only*





XCR TOUR

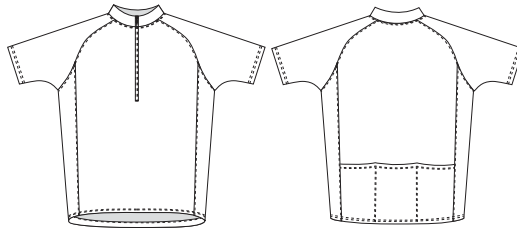
SL: NC-XT11 SS: NC-VP22 LS: NCVP44

The XCR is a club fit jersey designed for casual and club riding.

SLEEVE STYLE

- Sleeveless (Women's Only)
- Short Sleeve
- Long Sleeve

TEMPLATE



SIZING

Mens XS - 3XL
 Womens XS - 3XL
 Youth XS - XL

FABRIC



FEATURES

- 1 Triple Back Pocket
- 2 Elastic Bottom Hem
- 3 11" Zipper (Standard)
- 4 Full Zipper (optional)





CR BIB

NEW

NC-CR11

The CR bib is our newest and most advanced bib short, perfect for the serious rider. Featuring a floating chamois so it doesn't bind in the leg fold.

SIZING

Mens XS - 2XL

TEMPLATE



FABRIC

2012W

GSM : 200
80% Polyamide
20% Spandex
Fabric Made in Italy

SHIELD

GSM : 240
80% Polyester
20% Spandex
Fabric Made in Italy

REVOLUTIONARY ENERGY

GSM : 195
71% Polyamide
29% Spandex
Fabric Made in Italy

BIB MESH

GSM : 165
80% Polyester
20% Spandex

FEATURES

- 1 Floating Chamois
 - 2 Road Performance Chamois
 - 3 Wide Leg Cuffs
 - 4 Back Yoke Seam
 - 5 Back Pocket
- Reflective Flatlock



ELITE-T3 BIB

NC-ET3B

FEATURES

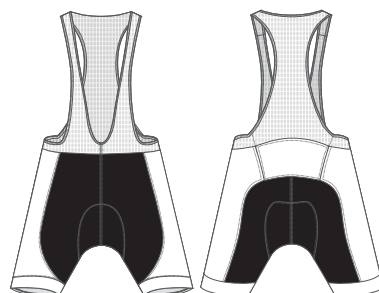
- 1 Large muscle compression
- 2 Anatomically engineered fit
- 3 Reflective Flatlock on back yoke seam
- 4 Wide leg cuff
- 5 Comp HP Chamois

Featuring a large self banded compression wrap on the legs, the Elite Bib is designed to return energy with every pump, while staying in place and remaining comfortable for endurance rides and hard sprints.

SIZING

Mens XS - 2XL
Womens XS - 2XL

TEMPLATE



FABRIC

2012W

GSM : 200
80% Polyamide
20% Spandex
Fabric Made in Italy

SHIELD

GSM : 240
80% Polyester
20% Spandex
Fabric Made in Italy

BIB MESH

GSM : 165
80% Polyester
20% Spandex



VENTURA BIB

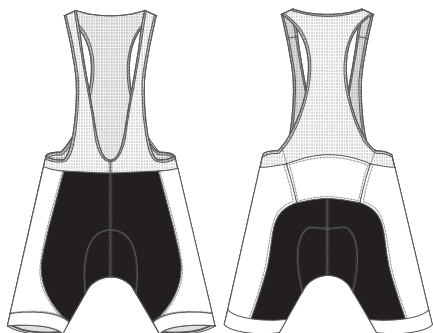
SHORT: NC-VP22 BIB: NC-VP44

Our Ventura Pro shorts and bib is designed for riders who demand comfort and performance.

SIZING

Mens XS - 2XL
Womens XS - 2XL

TEMPLATE



FABRIC

2012W
GSM : 200
80% Polyamide
20% Spandex
Fabric Made in Italy

BIB MESH
GSM : 165
80% Polyester
20% Spandex

FEATURES

- 1** Grip Compression Band Legs
- 2** Flatlock Seams
- 3** Comp HP Chamois



SKIN SUIT

NC-SS22

Skin tight and engineered for professional level riding and racing.

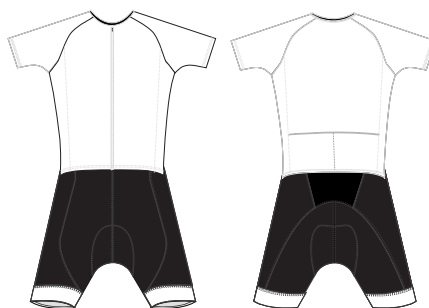
FEATURES

- 1 Invisible Front Zipper
- 2 Flatlock Seams
- 3 Grip Compression Band

SIZING

Mens XS - 2XL
Womens XS - 2XL


TEMPLATE



FABRIC


MATRIX

GSM : 190
83% Polyester
17% Spandex

 Fabric Made in Italy

2012W

GSM : 200
80% Polyamide
20% Spandex

 Fabric Made in Italy

SLEEVE STYLE

- Half Sleeve
- Long Sleeve



TRI SUIT

NEW

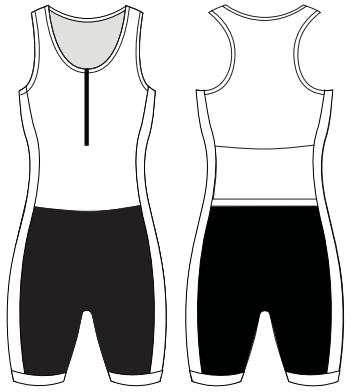
NC-TS00

Skin tight and engineered for professional level riding and racing.

SIZING

Unisex S-XL

TEMPLATE



FABRIC

TAVOLARA GSM : 200
80% Polyamide
20% Spandex
Fabric Made in Italy

REVOLUTIONARY ENERGY GSM : 195
71% Polyamide
29% Spandex
Fabric Made in Italy

FEATURES

- 1 Back Zip (Standard)
- 2 Front Zip (Optional)
- 3 Compression Leg Bands
- 4 Lightweight
Back Pocket (Optional)
- 5 Chamois : Super Tri Medium
- 6 No Chamois (Optional)



RUDY

NINE-O

TRI-HART

COUNTY CYCLES

XTEERRA
BETSUITS

TRI-HART

TRI-HART

NINE-O

TRI-HART

NINE-O



ELEMENT SOFTSHELL

NC-E300

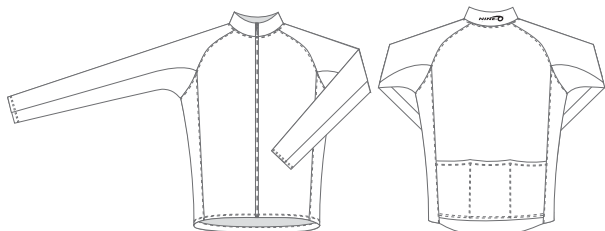
The Element softshell jacket is equipped with fleeces sides and arms to provide extreme mobility and a form fit styling.

SIZING

Mens 2XS - 2XL

Youth XS - XL

TEMPLATE



FABRIC

SOFTSHELL

GSM : 300
100% Polyester
PU Membrane

DOLOMITI

GSM : 240
85% Polyester
15% Spandex

FEATURES

- 1 Triple Back Pocket
- 2 Silicone Grip Bottom Hem
- 3 Reflective Tape (Back)
- 4 Wind + Water Resistant
- 5 Breathable
- 6 Stretch fleece sides, under arm panels, & cuffs



E3 VELOCITY

NC-VJ00

FEATURES

- 1 Triple Back Pocket
- 2 Silicone Grip Elastic Back Hem
- 3 Camlock Full Zipper
- 4 Swiss Technology 
- 5 Reflective Tape (Back)
- 6 Wind, Water + Soil Resistant
- 7 Breathable


Our premium lightweight riding jacket provides an all purpose shield for cold climate rides, to keep you warm and comfortable.

SIZING

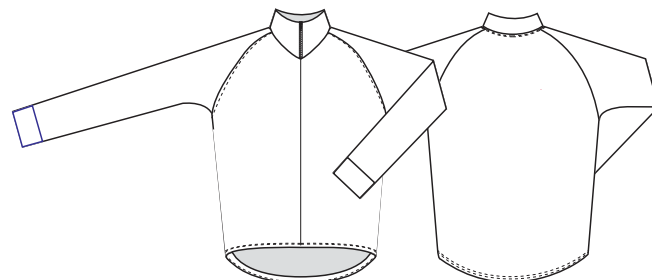
Mens XS - 2XL

FABRIC

E3

GSM : 100
100% Polyester
 Swiss fabric

TEMPLATE





E3 VELOCITY / HI-VIS VEST

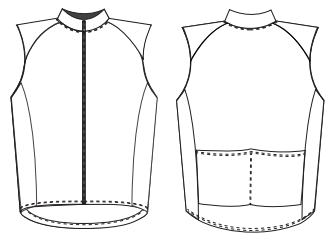
NC-VV00 HI-VIS: NC-VVHV

Our premium lightweight riding vest provides a mobile breathable protective shield to wear with your long sleeve jersey. Also available in a Hi-Vis option that includes reflective tape on front & back, and reflective printed logo.

SIZING

Mens XS - 2XL
Women XS - 2XL

TEMPLATE



FABRIC

E3	GSM : 100 100% Polyester + Swiss fabric
HI VIS E3	GSM : 100 100% Polyester + Swiss fabric
BIB MESH	GSM : 165 80% Polyester 20% Spandex

FEATURES

- 1 Double Back Pocket
- 2 Stretch Binding (Bottom & Armholes)
- 3 Lightweight
- 4 Reflective Tape (Hi-Vis only)
- 5 Reflective Logo (Hi-Vis only)
- 6 Swiss Technology 



ARM WARMERS

NC-KWOO

Stands up against the cold weather to provide you with warmth and comfortability.

SIZING

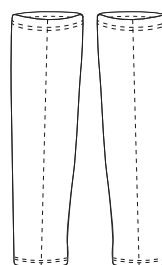
Unisex XS-XL
Youth - One Size

FABRIC

DOLOMITI

GSM : 240
85% Polyester
15% Spandex

TEMPLATE



CHAMOIS

ROAD PERFORMANCE CHAMOIS

(CR BIB ONLY)

FEATURES

- 7 Hour Rating
- Long Distance
- 360 x 203mm
- Ultra High Density (14mm)
- 60-120 kg/m³
- Anti-Wrinkle
- Multi Dimensional Shape



COMP HP CHAMOIS

(ELITE T3 + VENTURA BIB ONLY)

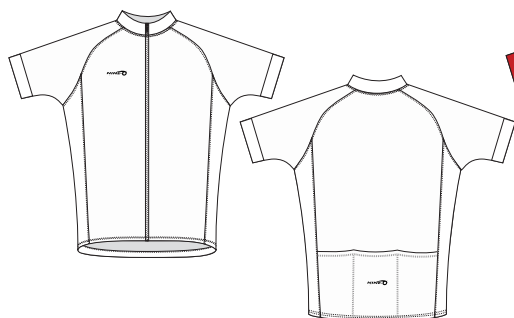
FEATURES

- 6 Hour Rating
- Long Distance
- 375 x 205mm
- Ultra High Density (11mm)
- 60-80-120 kg/m³
- Anti-Wrinkle
- Multi Dimensional Shape



TEMPLATES

Choose from a variety of different design templates. Have your own idea ? Work with our talented designers to bring your vision to life. *Matching bibs available upon request



CREATE YOUR OWN



RACER



EMERALD



FLYER



HAMMER



SPEEDY



JPEG



MAVERICK



DIGITAL

TEMPLATES

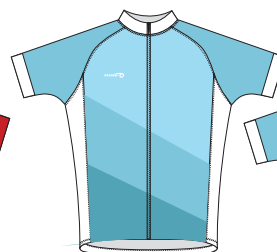
Choose from a variety of different design templates. Have your own idea ? Work with our talented designers to bring your vision to life. *Matching bibs available upon request



WIND



FIRE



ICE



TRIDENT



PANNIER



IGUANA



JAGUAR



STEEL

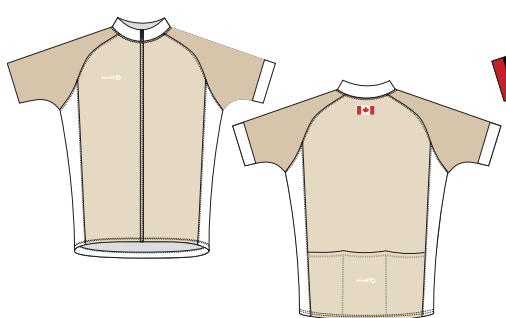


OTHELLO



TEMPLATES

Choose from a variety of different design templates. Have your own idea ? Work with our talented designers to bring your vision to life. *Matching bibs available upon request



SEPIA



TRONIC



CHEETAH



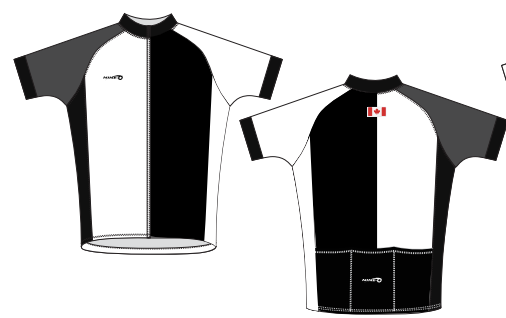
ADVANCE



TRIBE



GLOBAL



INVERT



FALCON



LXP

TEMPLATES

Choose from a variety of different design templates. Have your own idea ? Work with our talented designers to bring your vision to life. *Matching bibs available upon request



ZERO



ONYX



JET



SUNSET



MIDNIGHT



DAYDREAM



ANATOMY



INFERNO

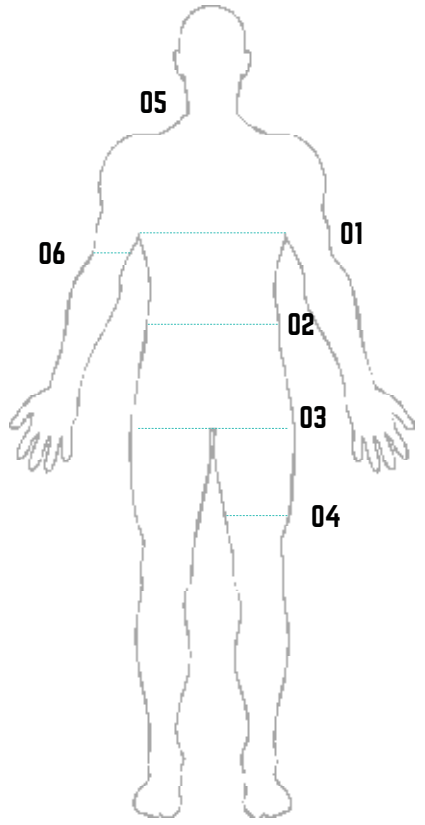


SPECTRUM



SIZING

- 01** Measure the chest / bust around the fullest point of the bust
- 02** Measure around the full extent of your natural waistline
- 03** Measure around the full extent of hip/seat while standing
- 04** Measure from center back of neck, over shoulder, to the wrist with a relaxed arm and slightly bent elbow
- 05** Measure the full extent of your lower thigh in the area just above the knee
- 06** Measure at the full extent of your bicep with a relaxed arm



	XS	SM	M	L	XL	2XL
v - fi f f H ? Ghfl / ' f H v ç " ¶ • g " t ? G r f ç r > f f " f ? G k	b ' f ¶ • v ç " ¶ • g " t ? G r f ç r > f f " f ? G k	R R L R S Q T L Q U R T L R U R V L R W R X L S O R O L R P	R T L R U Q V L Q W R V L R W R X L S O R P L R Q	R V L R W Q X L R O R X L S O R P L R Q	R X L S O R P L R Q S P L S Q R Q L R R	S P L S Q R R L R S S R L S S R R L R S R S L R T
l f f H ? Ghfl / ' f H v ç " ¶ • g " t ? G r f ç r > f f " f ? G k	b ' f ¶ • v ç " ¶ • g " t ? G r f ç r > f f " f ? G k	R U L R W Q X L R O R W L R X R R L R S	R W L S O R P L R Q R R L R S R R L R S	S P L S Q R P L R Q R R L R S R S L R T	S P L S Q R P L R Q R R L R S R S L R T	S R L S S R R L R S S T L S U S V L S X R V L R X R X L S O S U L S V S W L S X R U L R V R V L R W
x - , • ' ? Ghfl / ' f H v ç " ¶ • r > f f " f ? G k	b ' f ¶ • v ç " ¶ • r > f f " f ? G k	Q T Q Q Q Q ^N Q ^H	Q V Q S Q T ^N Q ^H	Q X Q T Q V	R P Q U Q W	R R Q V Q X
' fi v ç f i f • ¶ ? Ghfl / ' f H k f f l ¶ • '	a " / f t k f f l ¶ • '	X P N P P T	P O N P P U	P P N P P V	P P ^N S P W	P Q ^N O P X

ORDER PROCESS

- STEP 1** | CHOOSE PRODUCT, SIZES, QUANTITIES - contact us. After selecting the jersey style from our catalogue or submitting a style of your own, be sure to contact us at sales@nine-o. This way we can touch base with you and continue the rest of your ordering process!
- STEP 2** | ORDER CONFIRMATION - You can contact us through email at sales@nine-o. We're available Monday through Friday from 9am-6pm. Our customer service department will confirm your order as well as discuss further details such as: quantities, specifics, and any other questions you may have. We'll make this as smooth as possible!
- STEP 3** | DEPOSIT - After confirming your order with our customer service department, you will be required to submit a 50% deposit based on your estimated order total. Deposits can be made by Visa, Interac, Master Card, cash, cheque, or by money orders. Money orders should be mailed to:
- Niko Apparel Systems; 61 Hempstead Drive; Hamilton, Ontario; L8W 2Y6, Canada.
- STEP 4** | ARTWORK SUBMISSION - Submit your artwork (logo, team name, etc.) to us. Art les must be sent in vector format (.ai or .eps) and all fonts much be converted to outlines. For proofing purposes, please include a .jpeg or any image le. If you are unable to provide artwork in the correct format, please forward a .jpeg to sales@nine-o.com and a quote for artwork will be sent for correct formatting. Our creative team is eager and very creative; we're ready to get the job done.
- STEP 5** | APPROVAL - Now that the apparel design, colours, logo placement, artwork, and deposit have been dealt with, we'll be able to move forward with your order. We'll compile all the work into a mock and send it to you for approval. Once is has been approved (and only then) we will proceed with the order.
- STEP 6** | BALANCE DUE - Once the order has been completed, our customer service department will contact you to arrange payment for the outstanding balance.
- STEP 7** | SHIPMENT - Your order will be ready for pick up or shipped to you.

WWW.NINE-O.COM

NINE-0[®]

WWW.NINE-0.COM

NINE-0 IS A DIVISION OF

NIKO[™]
NIKO APPAREL SYSTEMS

SALES@NINE-0.COM

61 HEMPSTEAD DRIVE
HAMILTON, ON
L8W 2Y6
(905) 318-0845

MADE IN  CANADA