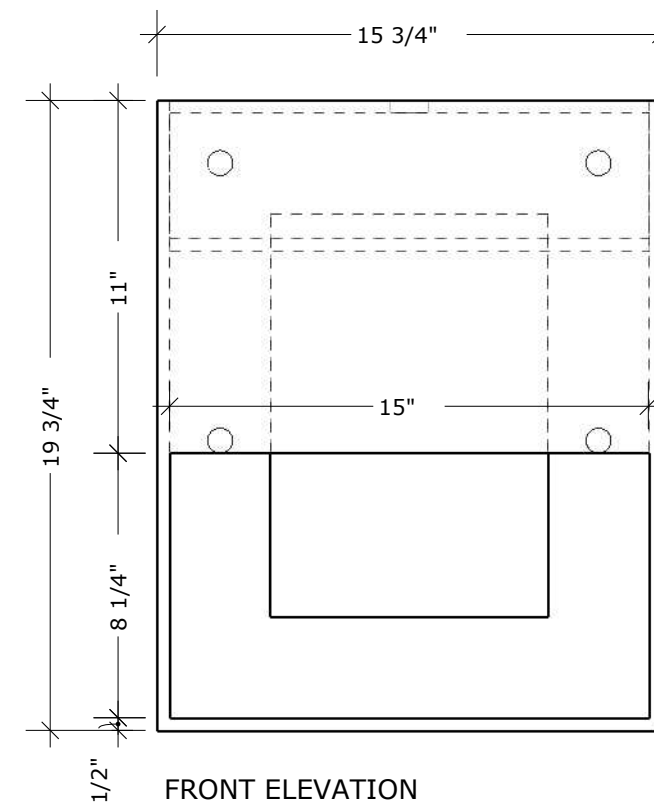
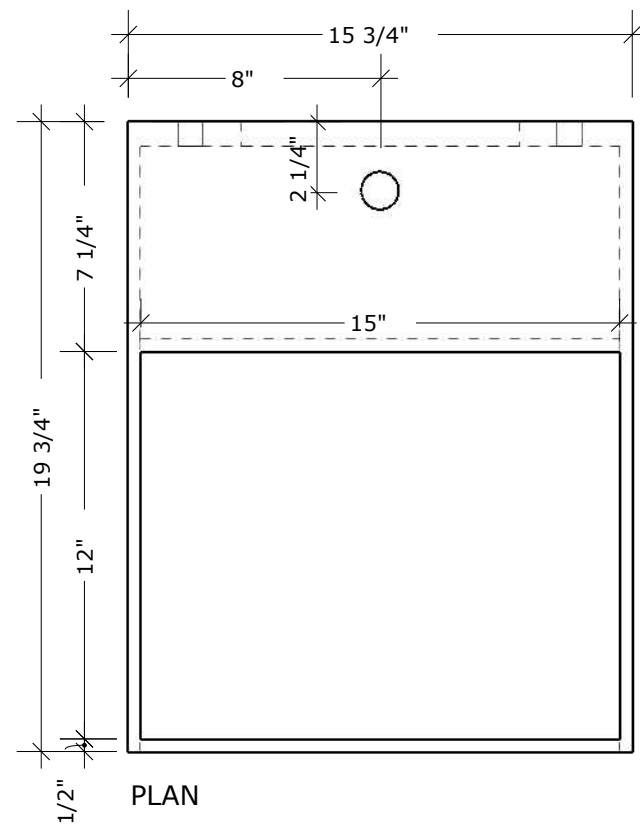
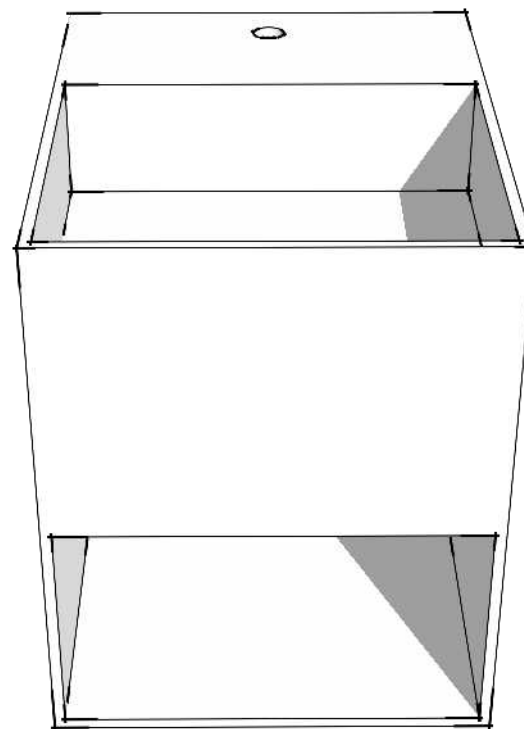


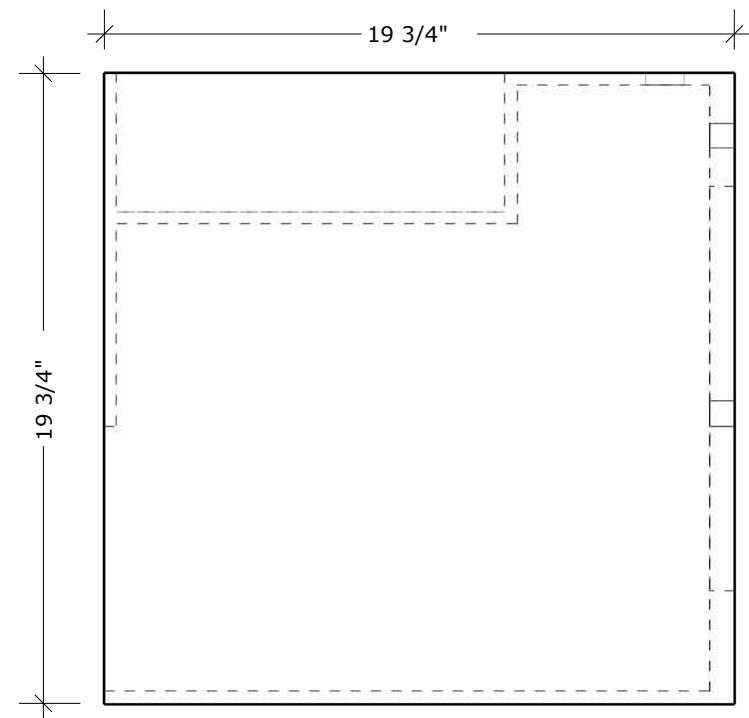
**OVERALL  
DIMENSIONS**

W 15 3/4" X H 19 3/4" X D 19 3/4"

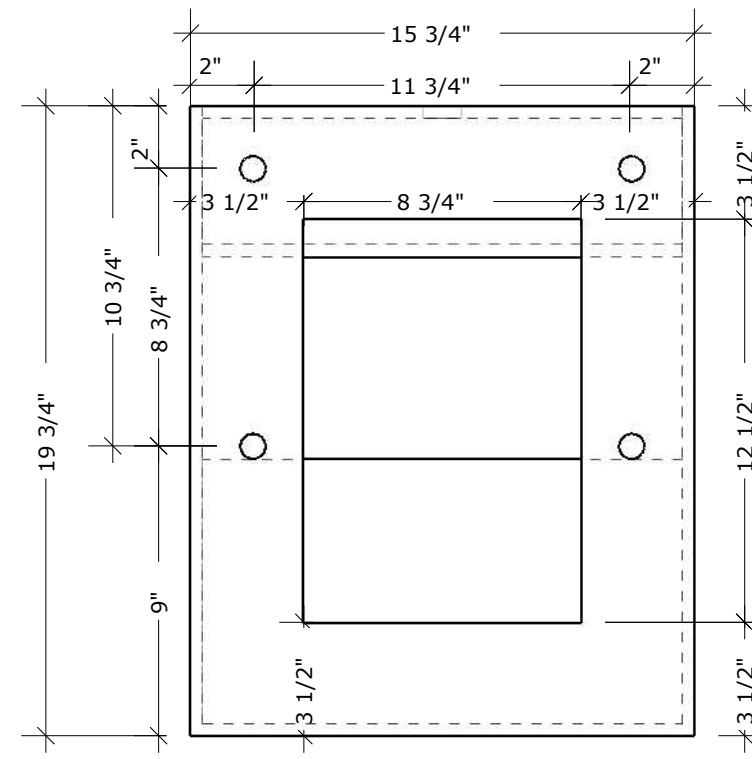


**OVERALL  
DIMENSIONS**

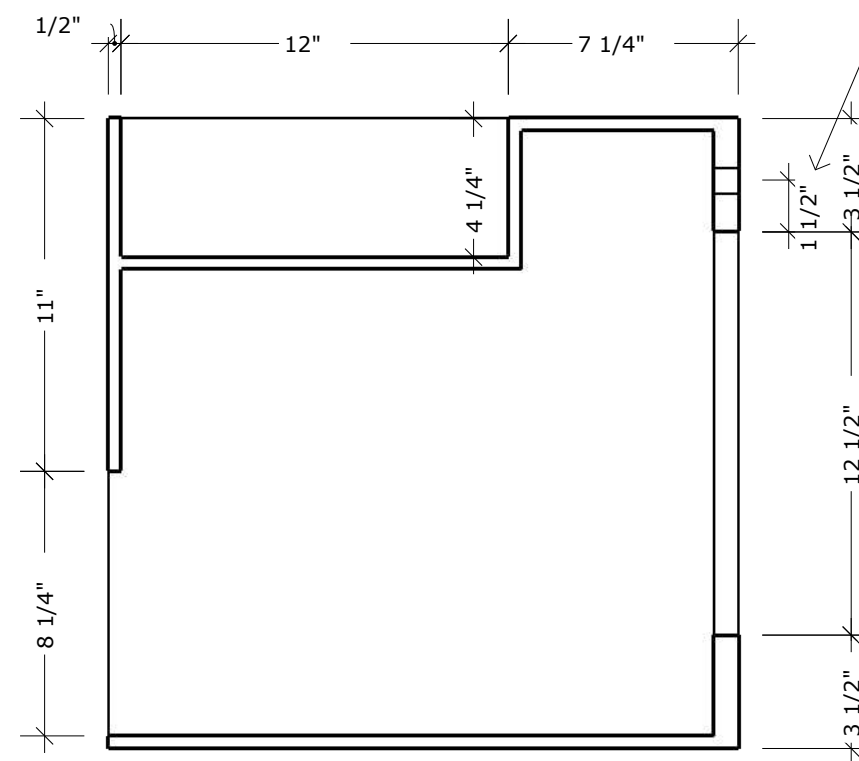
W 23 3/4" X H 23" X D 18"



SIDE ELEVATION



BACK ELEVATION

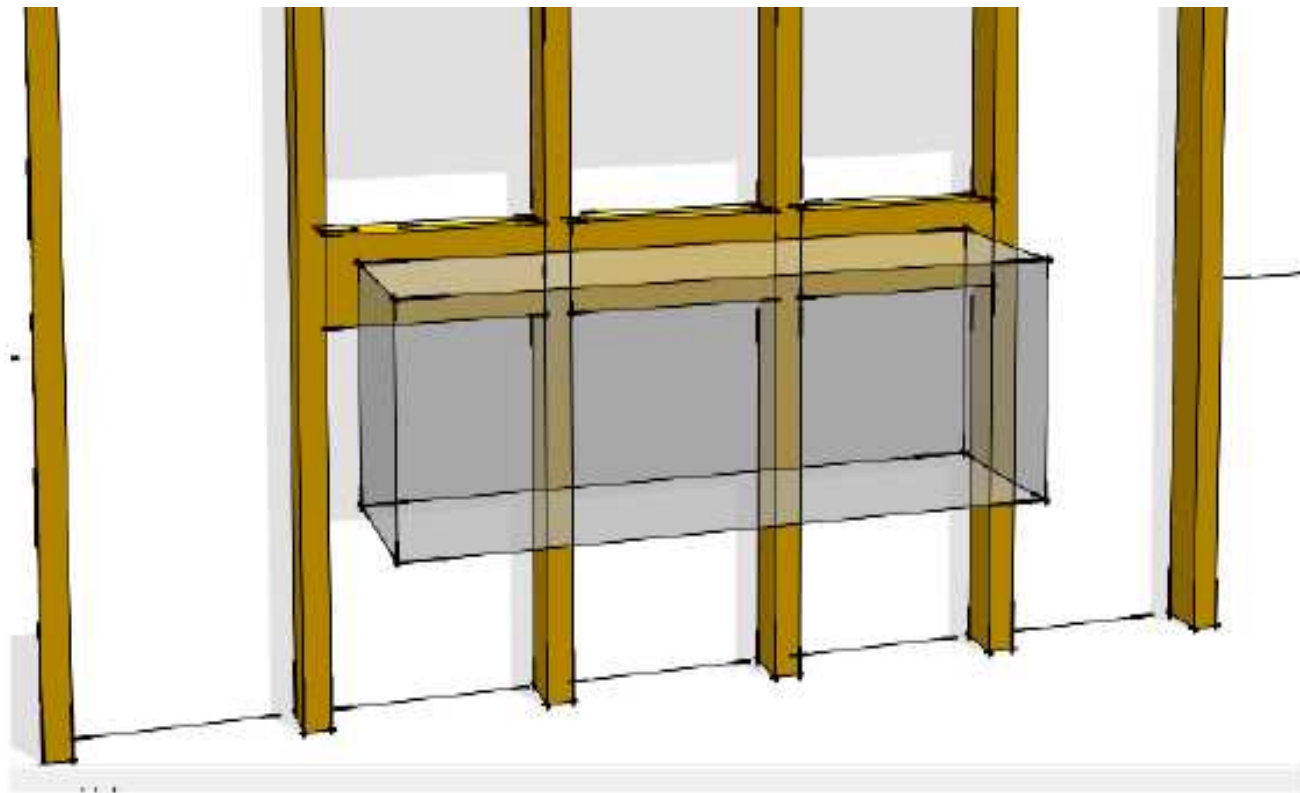


SECTION CUT

**APPROXIMATE HEIGHT OF  
HANGING MECHANISM  
FROM TOP OF VANITY**



**PRODUCT CODE**  
BA 38421MW



**FLOATING VANITY**

**FLOATING CABINETRY ARE REQUIRED TO BE REINFORCED WITH TWO OR THREE LAYERS OF 2X6 STUDS BETWEEN THE STUDS.**

**FOR VANITY, HEIGHT OF BLOCKING SHOULD BE AT THE TOP OF THE CABINETRY (NOT INCLUDING COUNTERTOP)**