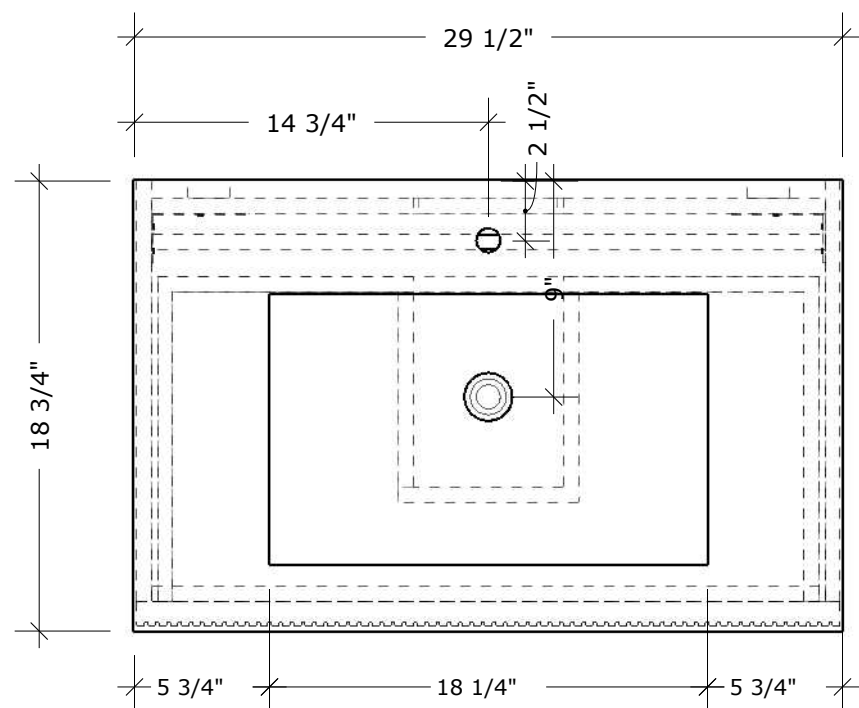
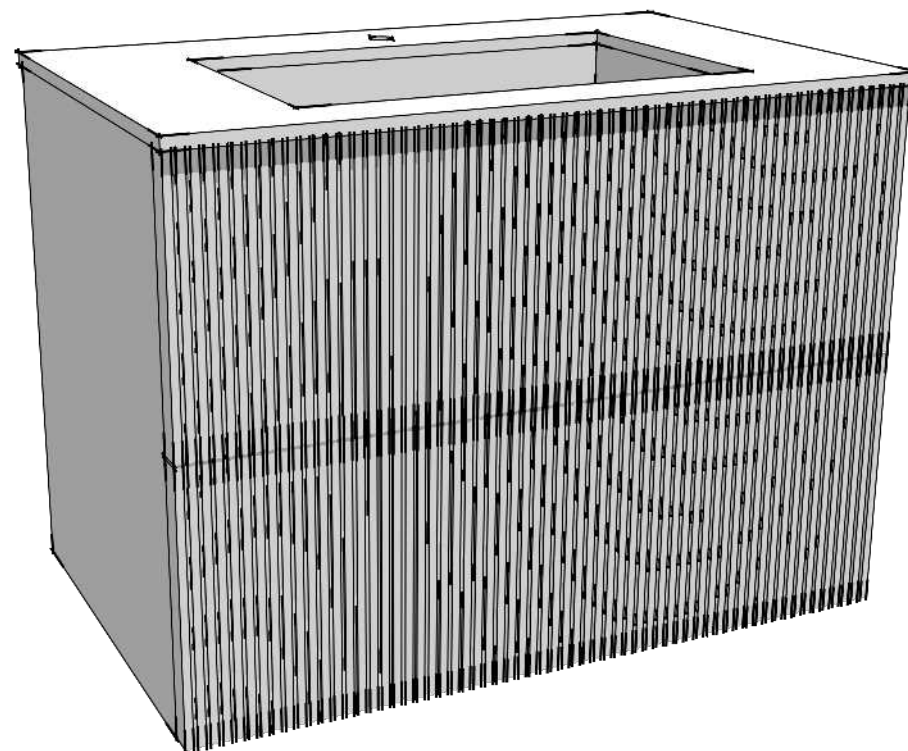
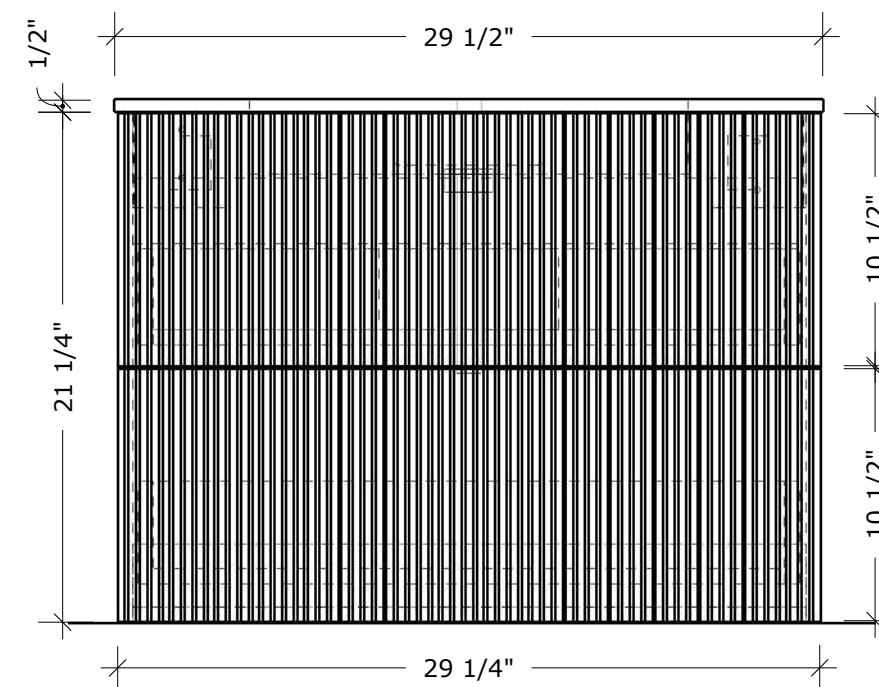


**OVERALL  
DIMENSIONS**

W29.5" X H21.75" X D18.5"



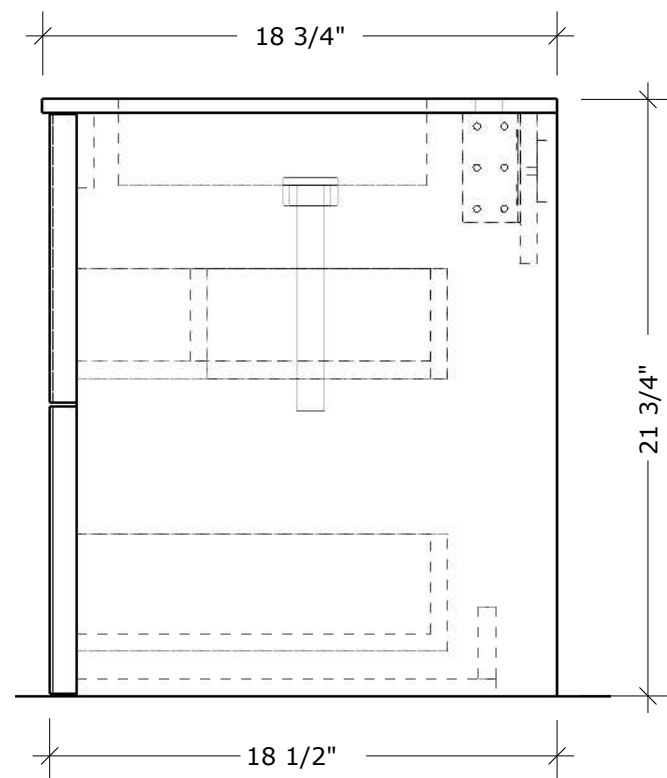
**PLAN**



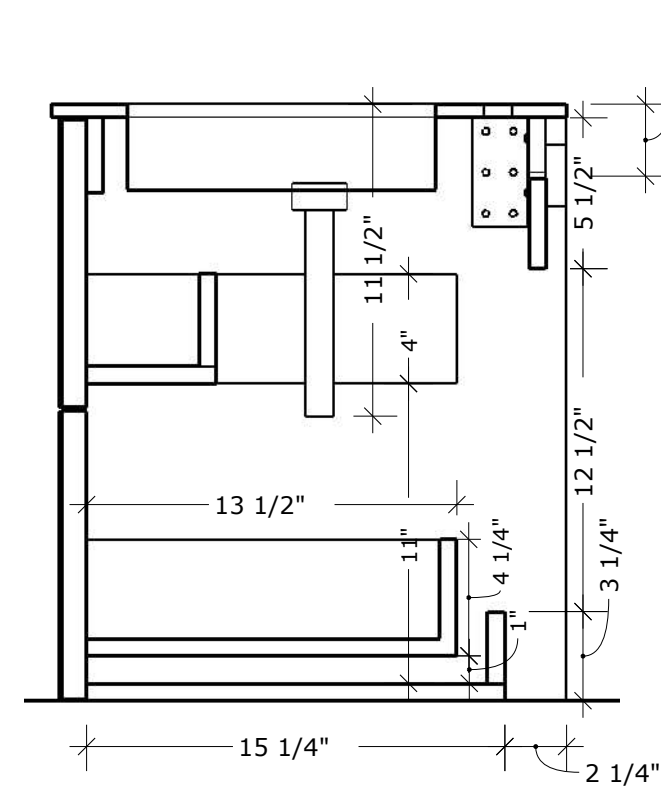
**FRONT ELEVATION**

**OVERALL  
DIMENSIONS**

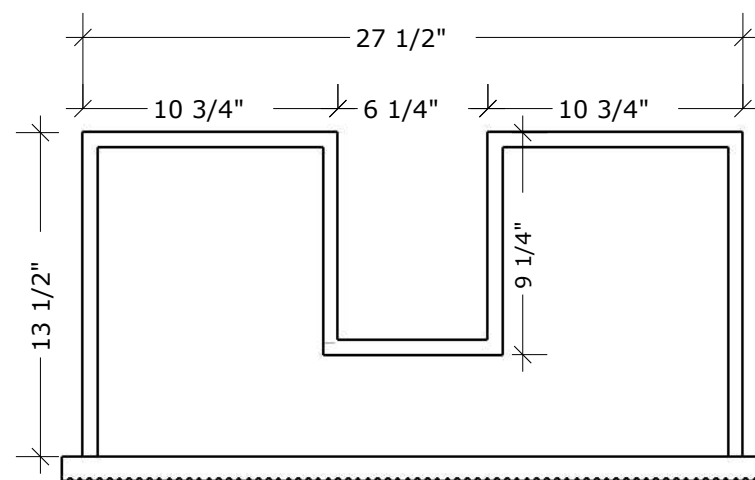
W29.5" X H21.75" X D18.5"



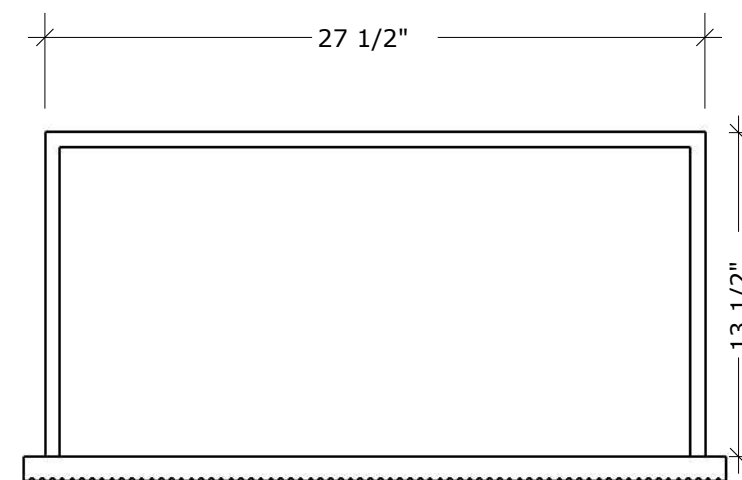
SIDE ELEVATION



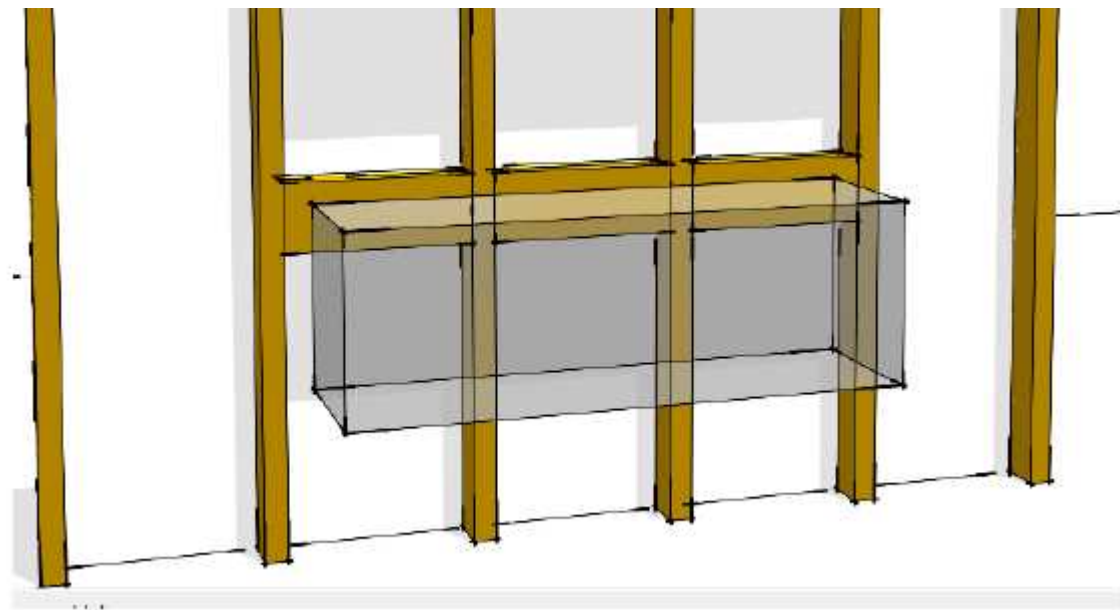
SECTION CUT



TOP DRAWER



BOTTOM DRAWER



**FLOATING VANITY**

**FLOATING CABINETRY ARE REQUIRED TO BE REINFORCED WITH TWO OR THREE LAYERS OF 2X6 STUDS BETWEEN THE STUDS.**

**FOR VANITY, HEIGHT OF BLOCKING SHOULD BE AT THE TOP OF THE CABINETRY (NOT INCLUDING COUNTERTOP)**