

Current Releases & Best Sellers - Fall 2023





**Atlas Peak Bracelet
Amazonite**

Six marvelous strands of natural amazonite gemstones are paired with gold vermeil beads and finished with our signature clasp and leather. Clasp is heavy gold plated brass.

SKU: B1907

\$ 144.00



**Atlas Peak Bracelet,
Labradorite**

Six marvelous strands of natural labradorite gemstones are paired with gold vermeil beads and finished with our signature clasp and leather. Clasp is heavy gold plated brass.

SKU: B8864

\$ 154.00



**Helena Marquis Earrings
Chalcedony**

Faceted chalcedony gemstones in are bezel set in gold vermeil. Gold-filled, Nickel-free ear wires. Approx. 3/4" drop.

SKU: E7230

\$ 40.00



**Helena Marquis Earrings
Labradorite**

Faceted labradodrite gemstones in are bezel set in gold vermeil. Gold-filled, Nickel-free ear wires. Approx. 3/4" drop.

SKU: E1990

\$ 40.00



Charley Very Necklace

Brass chain with satin gold finish. Lobster clasp. 20" long, adjustable.

SKU: N2795

\$ 40.00



**Charley Bracelet Large
Links**

Brass chain with satin gold finish. Lobster clasp. 7 1/2" long.

SKU: B6988

\$ 32.00



Larkmead Necklace Grey Moonstone

Grey moonstone gems and gold vermeil beads. Finished with a soft, deerskin leather band and our signature clasp. Clasp is heavy gold plated brass. Approx. 18 inches.

SKU: N7180A

\$ 124.00



Helena Mini Pendant Chalcedony

Featuring a chalcedony pendant, bezel-set in gold vermeil, wire-wrapped by hand and tied to soft leather lace. Adjustable from choker to 30". Pendant is approx. 1".

SKU: N7020A

\$ 34.00



Napa Bracelet Labradorite

Labradorite beads create a lovely layered look. Finished with our signature clasp and leather closure. Gemstones and gold plated accents. Approx. 7 1/4".

SKU: B3750B

\$ 78.00



Helena Pendant Moonstone

Featuring a Moonstone pendant, bezel-set in gold vermeil, wire-wrapped by hand and tied to soft leather lace. Adjustable from choker to 30". Pendant is approx. 2".

SKU: N4500A

\$ 80.00



Helena Pendant Labradorite

Featuring a labradorite pendant, bezel-set in gold vermeil, wire-wrapped by hand and tied to soft leather lace. Adjustable from choker to 30". Pendant is approx. 2".

SKU: N1420A

\$ 80.00

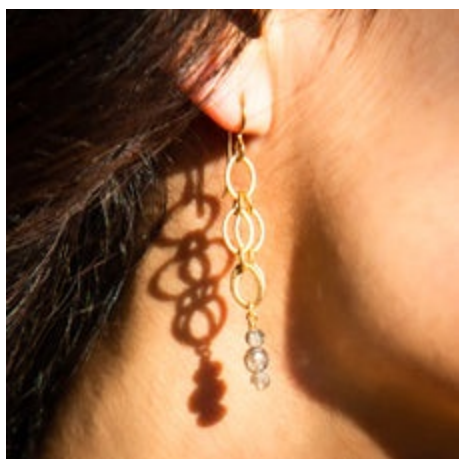


Napa Matinee Necklace, Labradorite

Sparkling, labradorite gemstones, gold vermeil beads and deerskin leather. Finished with our signature clasp in gold plate. 24" long.

SKU: N8799A

\$ 114.00



**Celeste Earrings,
Labradorite**

Distinctive satin gold chain is the perfect companion to flashy labradorite gemstone beads. Gold plated accents. Nickel-free ear wires. Approx. 2" drop.

SKU: E4419

\$ 32.00



Napa Bracelet Iolite

Iolite gemstones & gold vermeil beads create a lovely layered look. Finished with our signature, gold plated clasp and leather closure. Approx. 7 1/4".

SKU: B9992A

\$ 110.00



**Cantina Bracelet,
Labradorite**

Flashy labradorite are paired with African brass beads and antique brass accents. Lobster clasp, adjustable from 7"-7 3/4".

SKU: B3627

\$ 50.00



**Paperclip Bracelet Large
Links**

Satin gold finish over lead-free brass. Signature clasp in gold plate. Approx. 7 1/2" long.

SKU: B7465

\$ 32.00

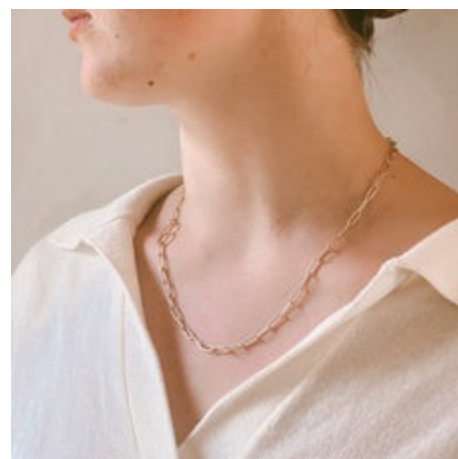


**Napa Bracelet Moss
Aquamarine**

Aquamarine gemstones & gold vermeil beads create a lovely layered look. Finished with our signature, gold plated clasp and leather closure. Approx. 7 1/4".

SKU: B9875A

\$ 140.00



Paperclip Necklace

On-trend chain necklace in a variety of lengths from 15" to 32". Satin gold finish over lead-free brass. Prices vary depending on length chosen.

SKU: N2933-15

\$ 26.00



Paperclip Earrings Long

Satin gold finish over lead-free brass. Approx. 2" long.

SKU: E45221

\$ 28.00



Cluster Link Earrings Aqua & Chalcedony

These earrings showcase an eye-catching combination of pyrite teardrops plated in gold, aquamarine and chalcedony stones, and a satin gold finish. Approx. 1 1/2" drop.

SKU: E8130

\$ 50.00



Paperclip Very Necklace

One of our most popular styles, this on-trend chain style is the perfect complement. Satin gold finish over lead-free brass. Various sizes. Price varies depending on length chosen.

SKU: N6686-15

\$ 38.00



Helena Teardrop Earrings Labradorite

Faceted Labradorite, in a classic teardrop shape are bezel-set in gold vermeil and hung on nickel-free ear wires. Approx. 3/4" drop.

SKU: E2285

\$ 48.00



Helena Teardrop Earrings Moonstone

Faceted Moonstone, in a classic teardrop shape are bezel-set in gold vermeil and hung on nickel-free ear wires. Approx. 3/4" drop.

SKU: E3021

\$ 48.00



Kortum Necklace with Leather Moss Aquamarine

Nested strands of sparkling, moss aquamarine beads in a sea-glass melange of hues. Paired with the softest deerskin leather laces to provide a casual elegance and versatility. Gemstones and gold-plated details. Adjustable from 24" to 36".

SKU: N4340A

\$ 210.00



SATIN GOLD LINKS

A beautiful selection of pieces in our signature, satin gold finish. These chain styles offer endless options for layering, pairing with our Helena Pendants (sold separately) or worn as a minimalist, modern style statement. Instantly and decidedly popular among our wholesale and DTC customers. Made of lead-free brass and finished with our hypoallergenic satin gold finish, which, at 4 microns is amazingly durable.

INFINITE VERSATILITY!

Our simple chains are generally available in 16", 18", 20", 24" & 32" lengths. Prices on the following pages are for the 16" version. Please visit our website for more pricing on different length options. Please inquire about custom lengths!



Charley Combi Necklace

Lead-free brass, satin gold & gunmetal finishes.

SKU: N4367

\$ 50.00



Box Chain Bracelet

Lead-free brass, satin gold finish.

SKU: B7671

\$ 24.00



Box Chain Necklace

Lead-free brass, satin gold finish. 16". Additional lengths available.

SKU: N2776-16

\$ 26.00



Charley Earrings

Lead-free brass, satin gold finish.

SKU: E3686

\$ 24.00



Charley Bracelet

Lead-free brass, satin gold finish.

SKU: B7263

\$ 26.00



Helena Labradorite Pendant on Rolo Chain

Lead-free brass, satin gold finish. 15". Additional lengths available.

SKU: N2772-16

\$ 86.00



Paperclip Earrings

Lead-free brass, satin gold finish.

SKU: E45222

\$ 26.00



Paperclip Bracelet

Lead-free brass, satin gold finish.

SKU: B7466

\$ 24.00



Paperclip Demi Necklace

Lead-free brass, satin gold finish.

SKU: N7306-16

\$ 20.00



Paperclip Necklace

Lead-free brass, satin gold finish. Lead-free brass, satin gold finish. 16". Additional lengths available.

SKU: N2933-15

\$ 26.00



Rolo Chain Necklace

Perfect for pairing with our gemstone pendants (sold separately). Lead-free brass, satin gold finish.

SKU: N7847-16

\$ 26.00



Paperclip Very Necklace

Lead-free brass, satin gold finish. Lead-free brass, satin gold finish. 15". Additional lengths available.

SKU: N6686-15

\$ 38.00

alexia viola napa valley : wholesale terms & conditions

Thank you for being here! My greatest asset is my customer relationships. Please note the following:

- A current re-sale license is required for wholesale purchases.
- Minimum opening order is \$500.00; Minimum re-order is \$150.00
- Payment is due prior to shipping.
- Net Terms may be extended after your first order.
- POS Materials are available. Please inquire!

PLEASE ALLOW 1-3 WEEKS FOR DELIVERY except in the case of prior agreement or other special offers. Special requests may take longer. Once your order is placed, we will follow up with a draft invoice and shipping estimate. Our preferred shipper is USPS Priority Mail, and we add the cost to your order. You may supply your UPS or FedEx third-party billing account as an alternative.

RETURNS & MERCHANDISE SWAPS: Returns are accepted only when items arrive damaged and are reported within 3 days of delivery. In that case a replacement will be provided. But sometimes an item that you are crazy about doesn't have the same effect on your customers. In that case, we are happy to discuss a swap. To swap merchandise, the following conditions must be met: The item must be in new condition; it must be part of our current product lineup and the original purchase date is within the past six months. In some cases, a restocking fee may apply.

ONGOING CUSTOMER SERVICE: We will stay in touch! We like to reach out occasionally to see how the line is doing and to see if we can be of service. Please reach out to us at any time if anything is amiss or you have questions or just wish to say, "hi!" You will also receive periodic emails that we send all of our customers with news and product updates. You may unsubscribe from the latter at any time.

READY TO PLACE AN ORDER?

View the entire collection online : <http://www.alexiviola.com>

Request wholesale purchasing credentials : info@alexiviola.com