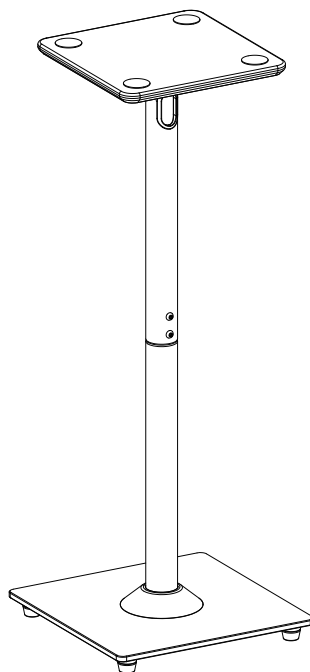
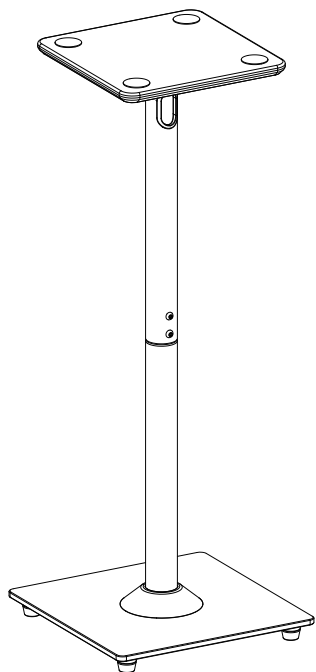

Speaker Stand with wooden pallet

Instruction Manual



10kg/22lbs



Safety Caution

BEFORE ASSEMBLY

- Layout all components and hardware. Check all parts are included and undamaged.
- Should anybody intends to install or use this mount, please read and understand this manual carefully.
- If you do not understand these instructions or have any doubt about the safety instructions, assembly or use of this product, please contact our customer service.

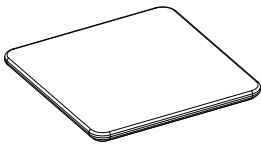
WARNING

- This product contains small items that could be a choking hazard if swallowed.
- KEEP AWAY FROM CHILDREN UNDER 3 YEARS OLD. ADULT SUPERVISION IS REQUIRED.
- Improper installation, such as using the product for monitors over its load capacity or for any purpose not explicitly specified, may cause damage or serious injury. We would not be liable for any damage or injury caused by improper mounting or inappropriate use.

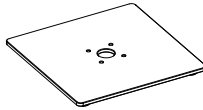
CAUTION AND MAINTENANCE

- Never allow children to climb, stand, hang, or play on any part of monitor or stand.
- This product is intended for indoor use only. Using this product outdoors could lead to product failure and personal injury.
- Check that the bracket is secure and safe to use at regular intervals (at least every three months).

PACKAGE CONTENTS



1(x2)
Board



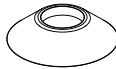
2(x2)
Base



3(x2)
Bottom tube



4(x2)
Upper tube



5(x2)
Plastic cover

Hardware

Philips Screw
M6 x 8mm



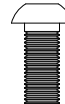
A x4

Philips Screw
M6 x 12mm



B x8

Philips Screw
M6 x 16mm



C x8

D6 Metal Washer



D x8

D6 Plastic Washer



E x8

4mm Allen Key



F x1

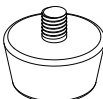
Hardware for stand assembly

Non-slip mat



G x8

Foot pad



H x8

Carpet nail



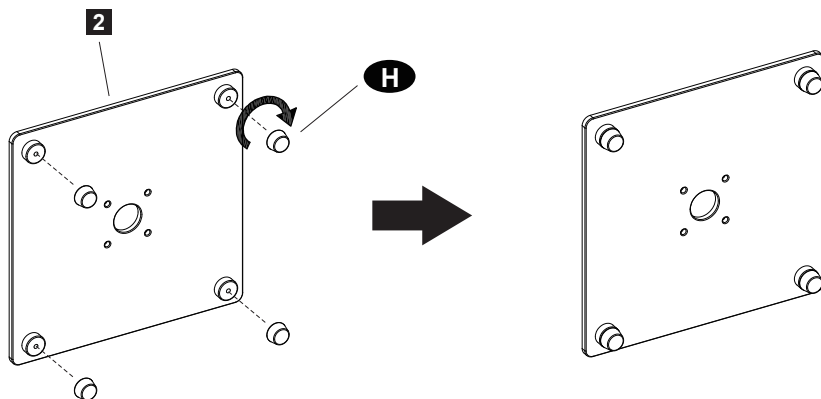
I x8

ASSEMBLY STEPS

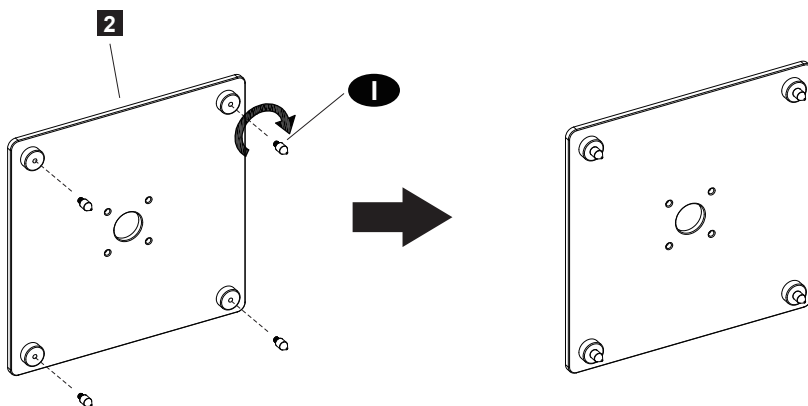
STEP 1: Install the base foot pad

Choose rubber feet or carpet nails according to your floor type.

Option One: If the stand is placed on wooden, cement, tile or other hard floor, install the foot pad **H** and adjust them to level if the base is not level .

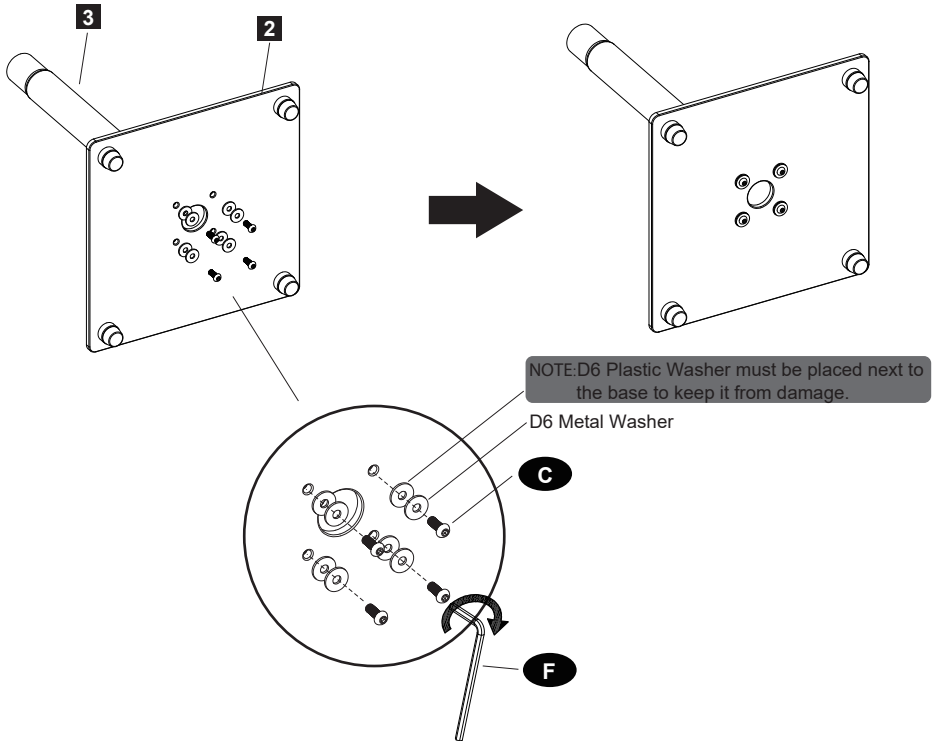


Option Two: If the stand is placed on carpet, install the carpet nails **I**, and adjust them to level if the base is not level.

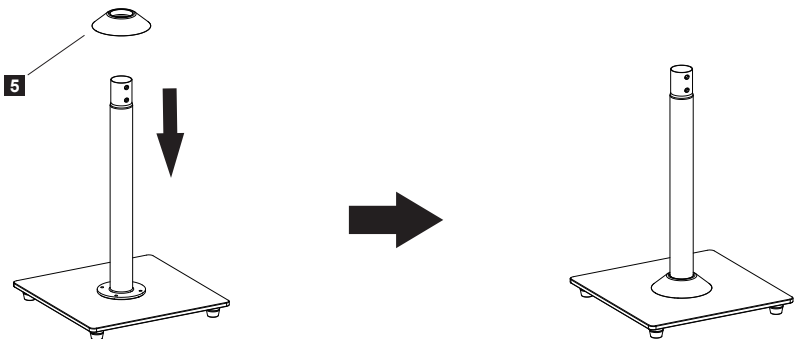


STEP 2: Install the bottom tube

1) Insert Bottom tube **3** into Base **2**, then fasten Bolt **C** by using Allen key **F**.

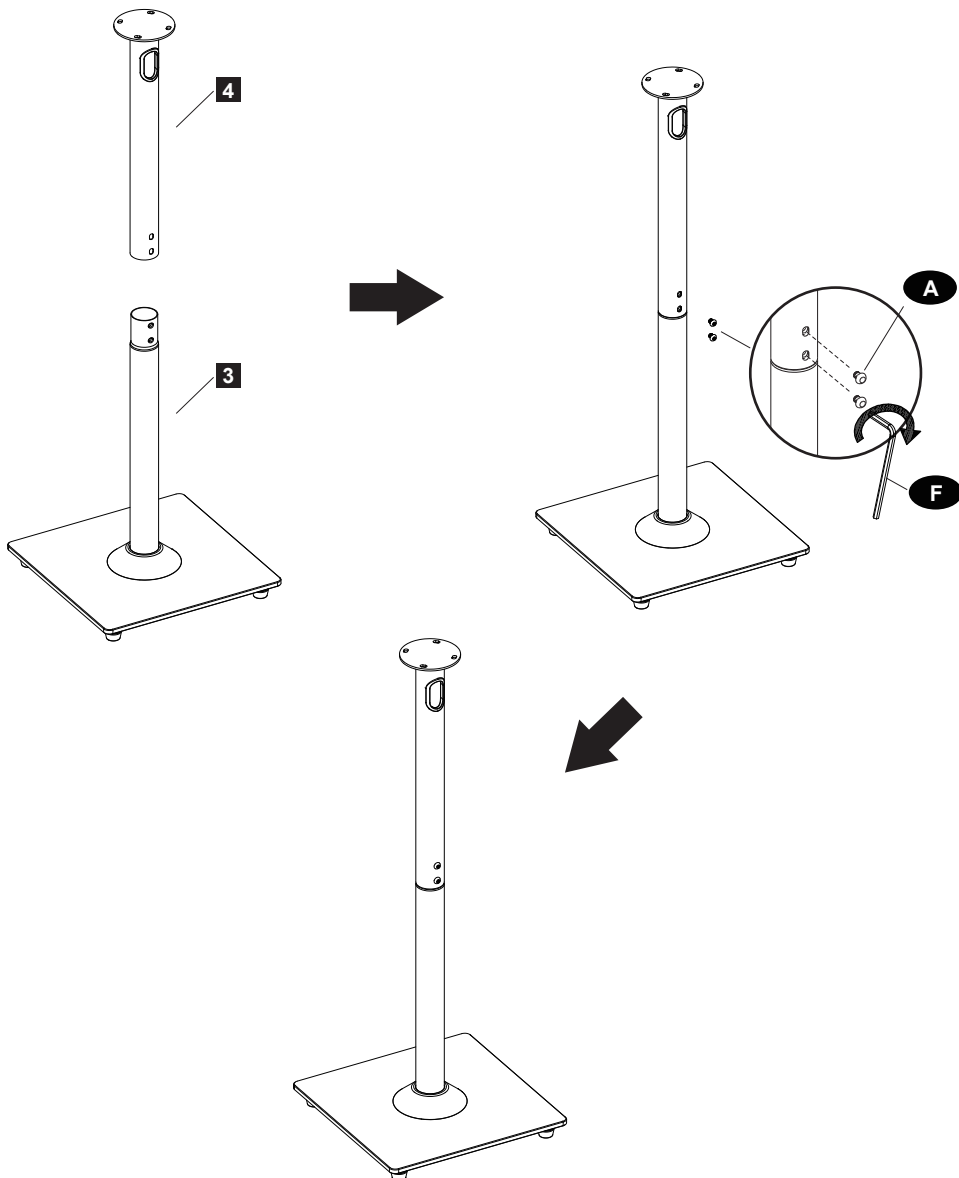


2) Insert Plastic cover **5** into Base **2**.



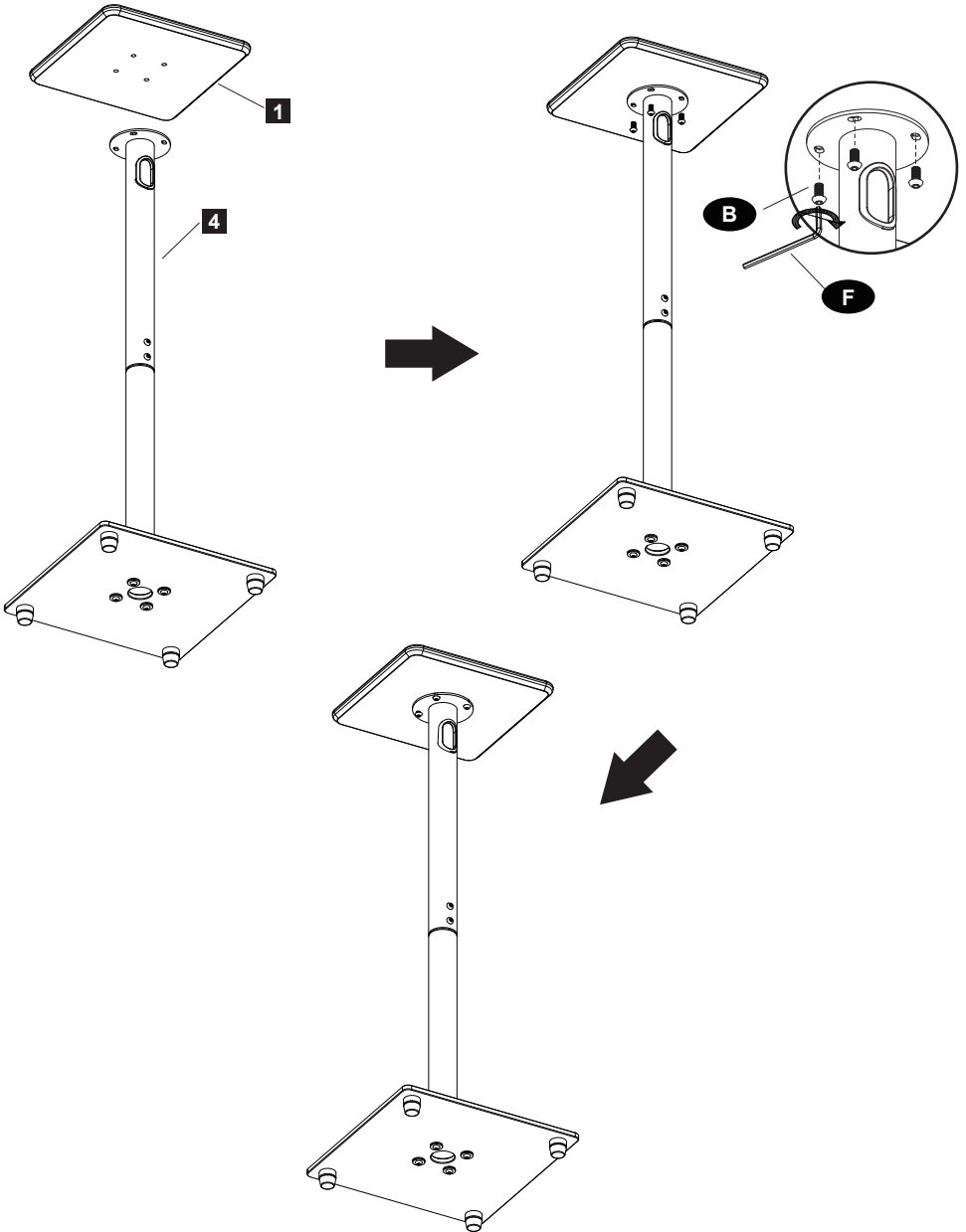
STEP 3: Install the upper tube

Insert Upper tube **4** into bottom tube **3**, then fasten Bolt **A** by using Allen key **F**.

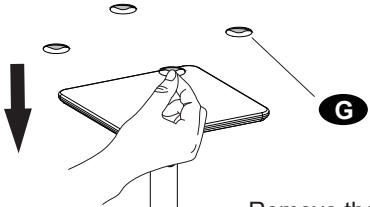


STEP 4: Install the board

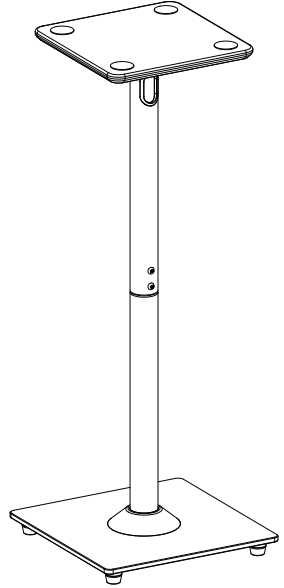
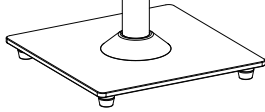
Insert Board **1** onto Upper tube **4**, then fasten Bolt **B** by using Allen key **F**.



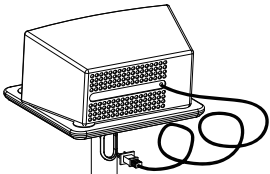
STEP 5: Install non-slip mat



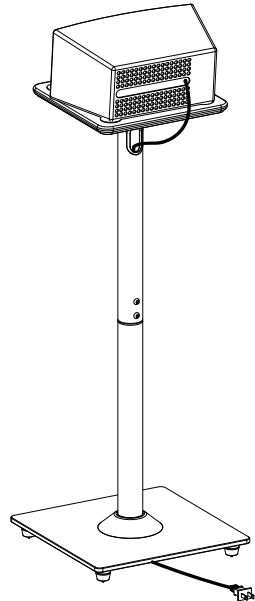
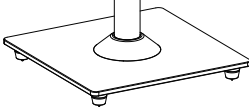
Remove the film of the adhesive, and stick non-slip mat **G** according to the size of speaker.



STEP 6: Installing Speakers



Insert the plug into the circular hole and pull it out from the hole under the base.



Product Dimensions

