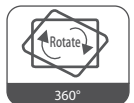
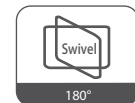
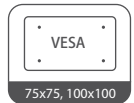
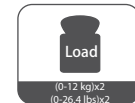
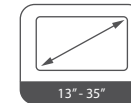


## Premium Dual Monitor Desk Mount



Installation

**INSTRUCTIONS**

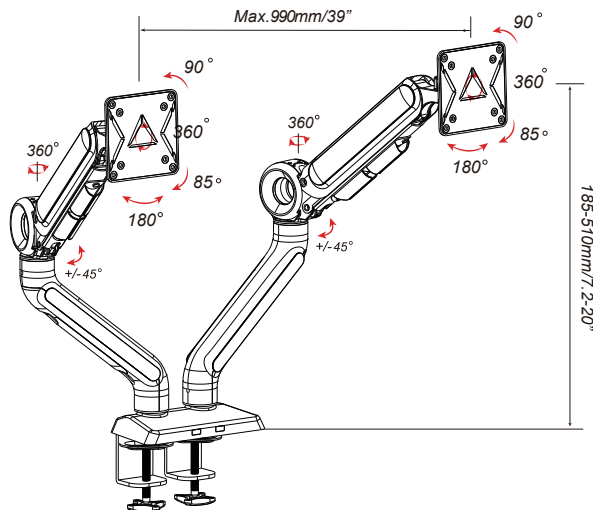
VM-GE62 US2.0

## WARNING STATEMENTS

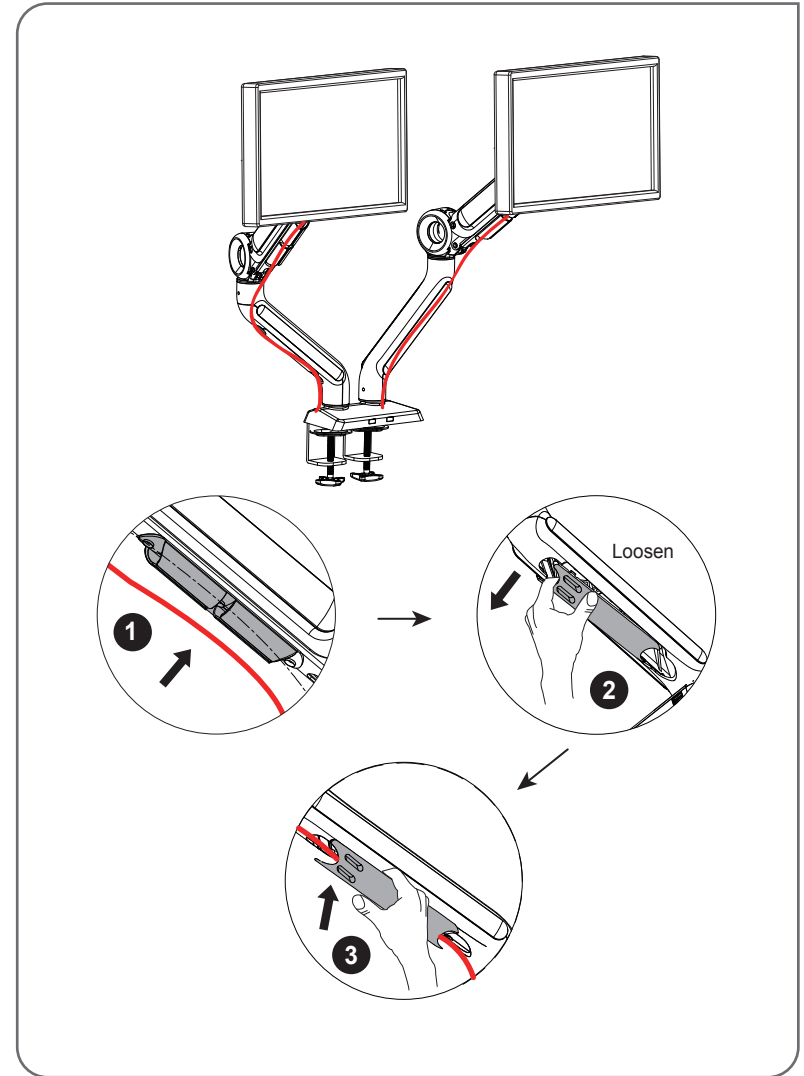
### Warning

- ⚠ Prior to the installation of this product, the installation instruction must be read and completely understood. Failure to do so may result in personal injury, property damage or voiding of factory warranty.
- ⚠ Do not install on a structure that is prone to vibration, movement or chance of impact. Reinforce the structure as required before installation. Make sure that the edge of table top is load-bearing enough.
- ⚠ The desk clamp can support a maximum thickness of 6 cm. Confirm the desk edge before installation.
- ⚠ Pay attention to the weight capacity of the mount. Exceeding the limitation can result in function unworkable or even serious personal injury and property damage.
- ⚠ Never operate the mount if parts are missing or damaged. Please contact our customer service team.

## PRODUCT LINE GRAPH



## Step 8: Cable Management Installation



Organize cables using the clips in the upper arms.  
Pull the lower cover out as shown, run cables through the lower arms and reattach the covers.

**Falls Down**

**Problem :**  
After being attached to the arm, the monitor falls down and can not stay at the desired height by itself.

**Solution :**

Turn counter-clockwise ("+" direction) to increase gas spring tension until the monitor can stay at the desired height by itself.

**Rises up**

**Problem :**  
After being attached to the arm, the monitor rises up and can not stay at the desired height by itself.

**Solution :**

Turn clockwise ("- " direction) to reduce gas spring tension until the monitor can stay at the desired height by itself.

### Step 7: Tilt & Swivel Adjustment

**VESA Swivel Adjustment**

**S=5mm**

**VESA Tilt Adjustment**

**S=5mm**

**Desktop**

**Desktop**

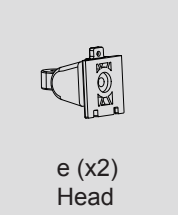
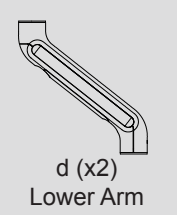
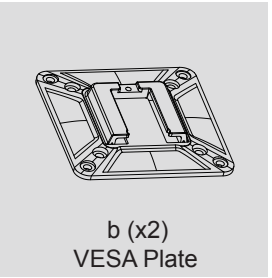
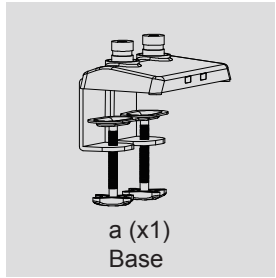
**Please do not move stand outside desk for safety!**

### TOOLS REQUIRED NOT INCLUDED



### PARTS INCLUDED

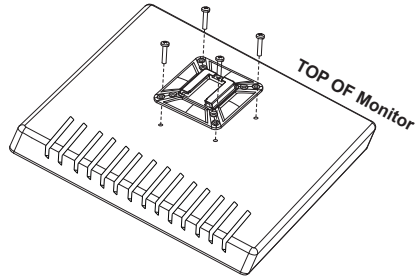
<b>A</b>	M4x12 (x8)	M4x30 (x8)	12x5.8x16 (x8)
<b>B</b>	S=3mm (x1)	<b>C</b>	M4x10 (x2)
<b>D</b>	M8 (x2)	M8x35 (x2)	25.4x8.2x1.5 (x2) 16x8.2x1.5 (x2)
<b>E</b>	S=5mm (x1)		
<b>F</b>	M10x100 (x1)	(x1)	S=4mm (x1)





## Step 4 : Attach Monitor

### OPTION A: For Flat Back Monitor



**NOTE:** Hand tighten screws to avoid over tightening.

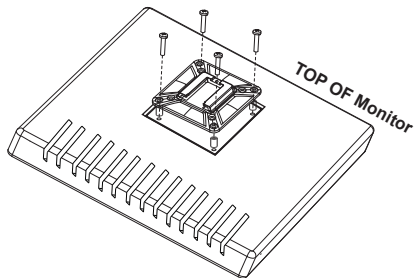


A



Flat surface installation: Install 4 short screws through faceplate to monitor via mounting holes. Do not tighten the screws excessively or your monitor might be damaged.

### OPTION B: For Recessed/Curved Back Monitor



**NOTE:** Hand tighten screws to avoid over tightening.



A

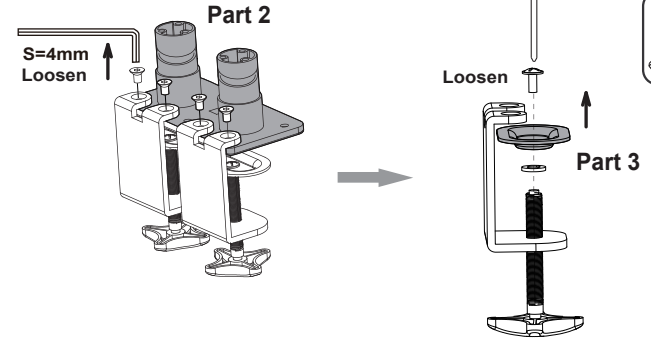


A



Recessed surface installation: Put 4 spacers between faceplate and monitor. Install 4 long screws through faceplate, spacers to monitor via mounting holes. Do not tighten the screws excessively or your monitor might be damaged.

II

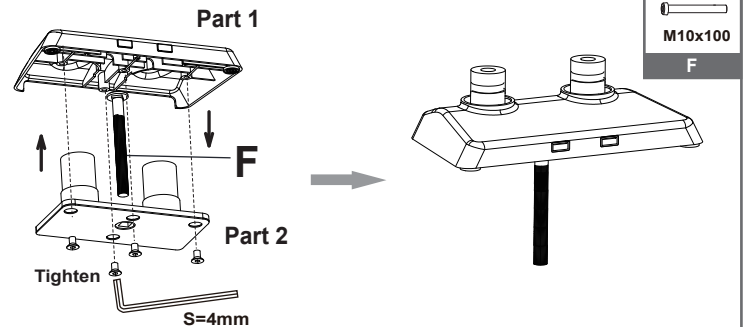


S=4mm  
F



Remove the four screws from the base by the short-head 4 mm Allen key. Get Part 2  
Remove the top screw with a Phillips screwdriver. Get part 3

III



S=4mm  
F

M10x100  
F

Place Carriage Bolt (F) through the center of Grommet Base (Part 2). Mount Grommet Base to Base (Part 1) bottom with Bolts (get from step I) and tighten by 4mm allen key (F).

