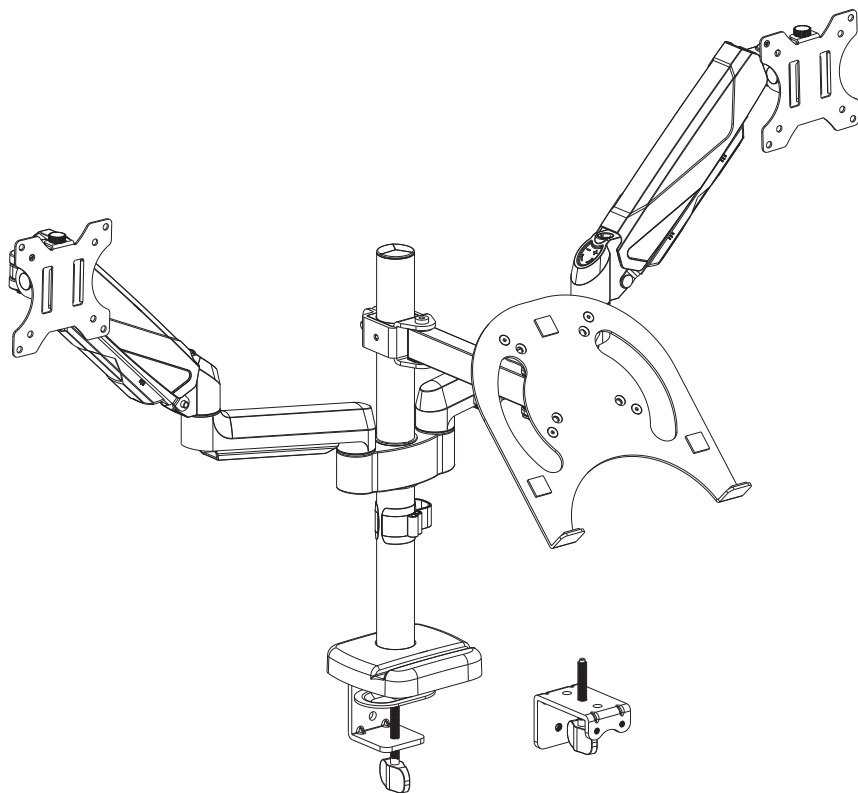

Dual Monitor and Laptop Mount

Instruction Manual



75x75mm
100x100mm



(2~9kg)x3
(4.4~19.8lbs)x3

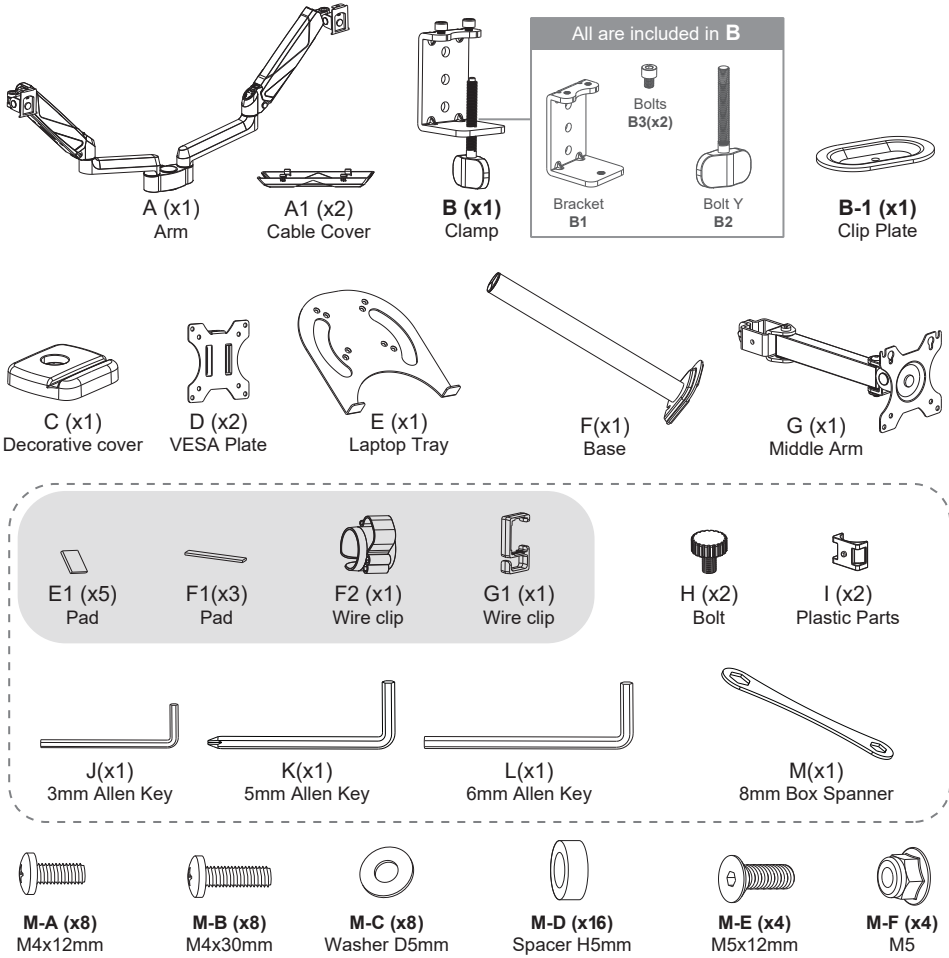
⚠ WARNING!

If you have any confusions or are not quite sure about the installation, please do not hesitate to ask for our help.

Before assembly, please check and make sure all necessary accessories are included and undamaged. Improper installation, such as use the product for monitors over its load capacity or for any purpose not explicitly specified, may cause damage or serious injury. We would not be liable for any damage or injury caused by improper mounting or inappropriate use.

The kit contains small items that could be choking hazards if swallowed. Please keep them OUT OF REACH OF CHILDREN UNDER 3 YEARS OLD. ADULT SUPERVISION IS REQUIRED.

PACKAGE CONTENTS



DO NOT EXCEED WEIGHT CAPACITY.

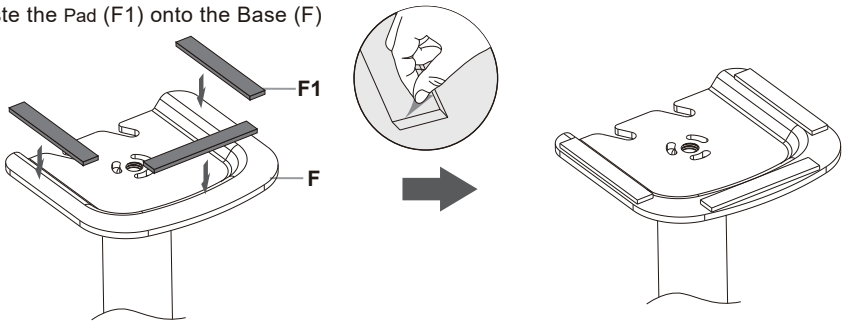
(2~9kg)x3
(4.4~19.8lbs)x3

NOTE: Not all hardware included will be used.

ASSEMBLY STEPS

STEP 1: Apply Pads To The Base Bottom

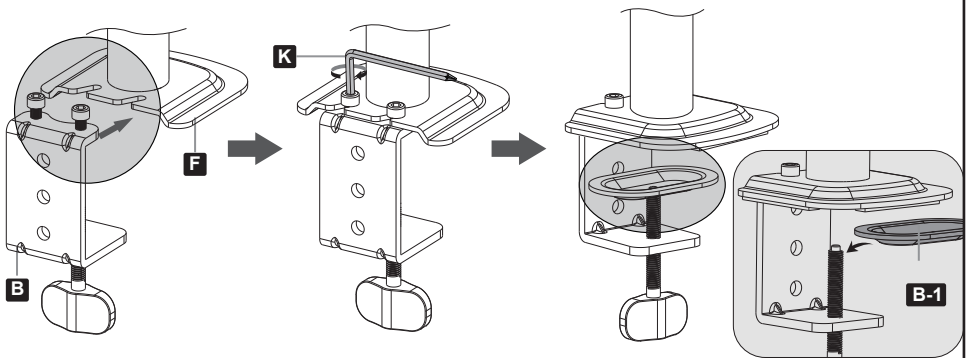
Paste the Pad (F1) onto the Base (F)



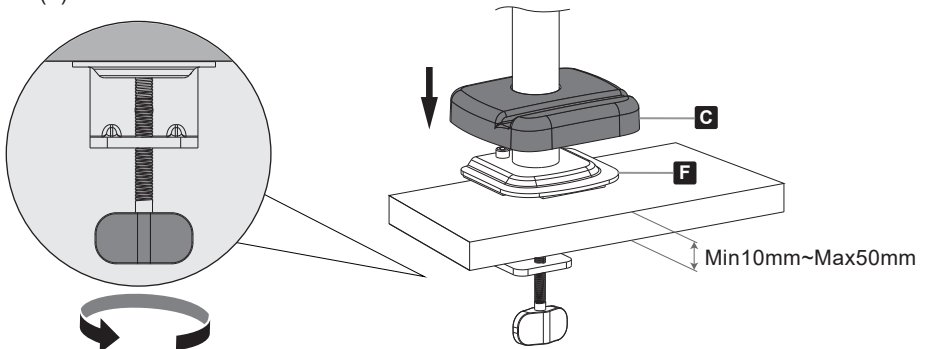
STEP 2: Clamp Installation Or Grommet Base Installation

OPTION A: Clamp Installation

Align the screw hole on the Base (F), then lock the Screw (B3) with a 5mm Allen Key (K). Put the Clip Plate (B-1) on the Bolt Y (B2)

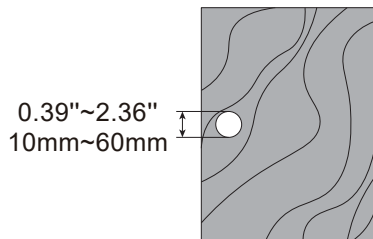


Fix the bracket on the table by tightening the Clamp (B), then fix the Decorative Cover (C) to the Base (F).



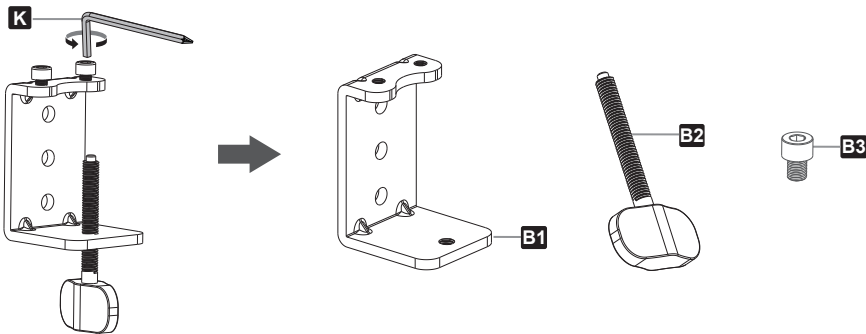
STEP 2: (Continued)

OPTION B: Grommet Base Installation

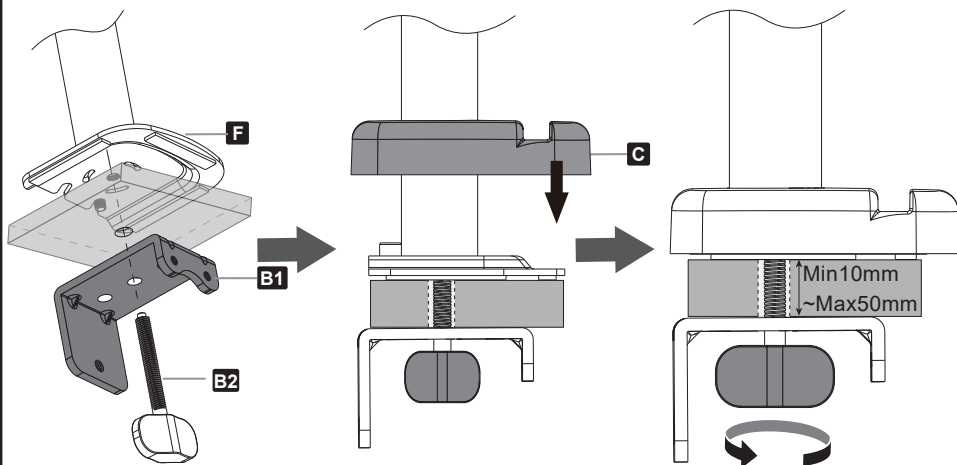


Ensure the desktop has a hole between 0.39"~2.36" (10mm~60mm) in diameter to use this option.

Use 5mm Allen Key(K) to detach Bolts(B3)and Bolt Y(B2) from Clamp(B).



Use Bolt Y (B2) through the screw hole on Bracket (B1) to fix the base (F) and the table board together. Then fix the Decorative Cover (C) to the Base (F).



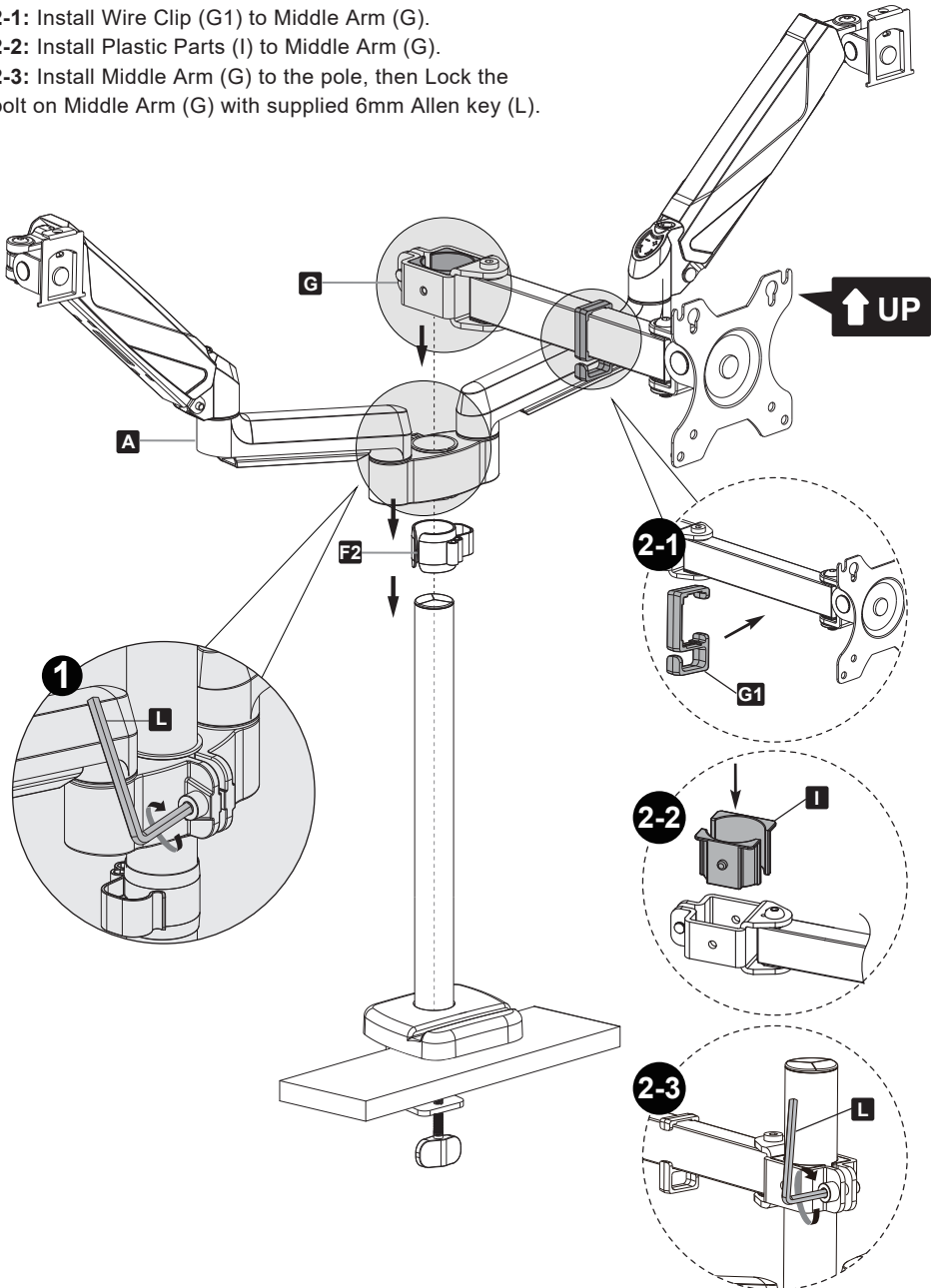
STEP 3 : Arm Installation

1: Install Wire Clip (F2) and Swivel Arm (A) to the pole. Lock the bolt on Swivel Arm (A) with supplied 6mm Allen key (L).

2-1: Install Wire Clip (G1) to Middle Arm (G).

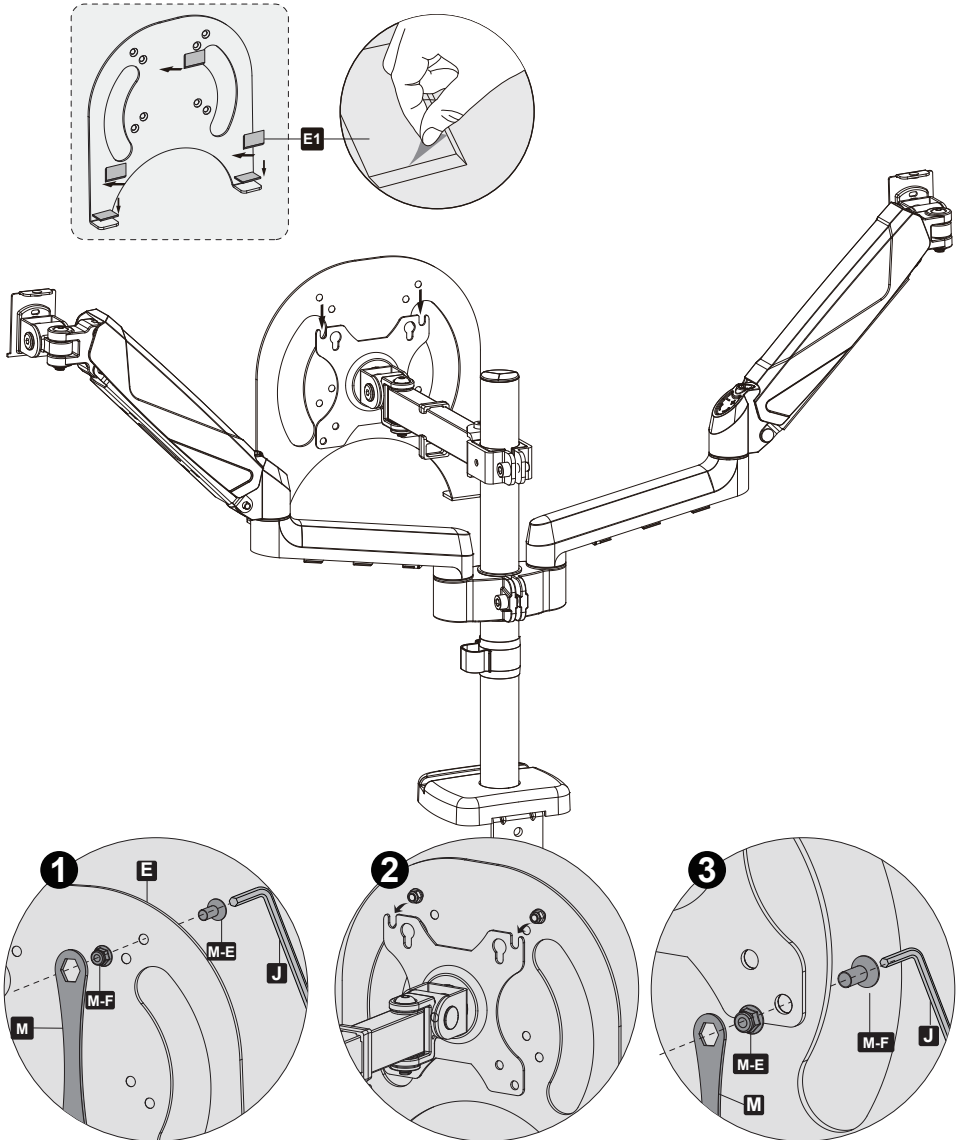
2-2: Install Plastic Parts (I) to Middle Arm (G).

2-3: Install Middle Arm (G) to the pole, then Lock the bolt on Middle Arm (G) with supplied 6mm Allen key (L).



STEP 4 : Front-panel Installation

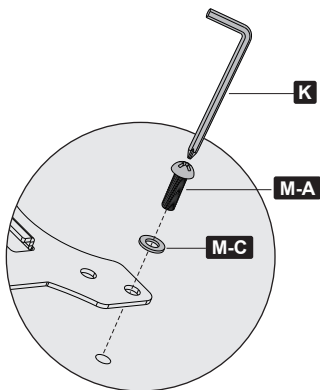
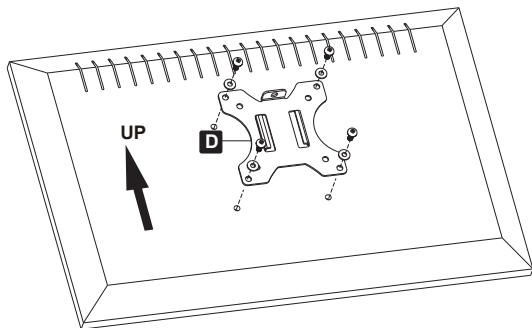
Install Laptop Tray (E) to the Middle Arm (G), Apply pads (E1) to the Laptop Tray (E) to avoid laptop scratches.



STEP 5 : Attach Monitor

OPTION A: Flat Back Monitor

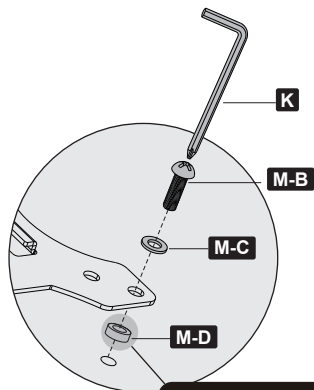
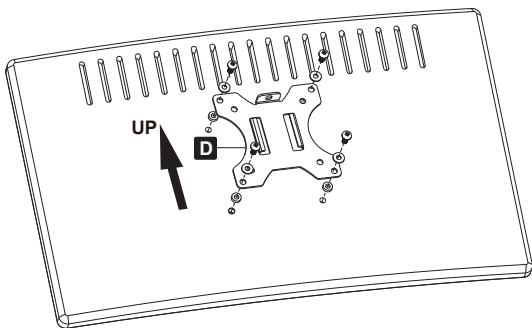
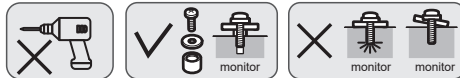
Attach the VESA plate (D) to the back of monitor and secure it by using a 5mm Allen Key (K) to tighten screws (M-A) along with washers (M-C).



Do not tighten the screws excessively or your monitor might be damaged.

OPTION B: Curved Back Monitor

Attach the VESA plate (D) to the back of monitor and secure it by using a 5mm Allen Key (K) to tighten screws (M-A) along with washers (M-C) and Spacer (M-D).



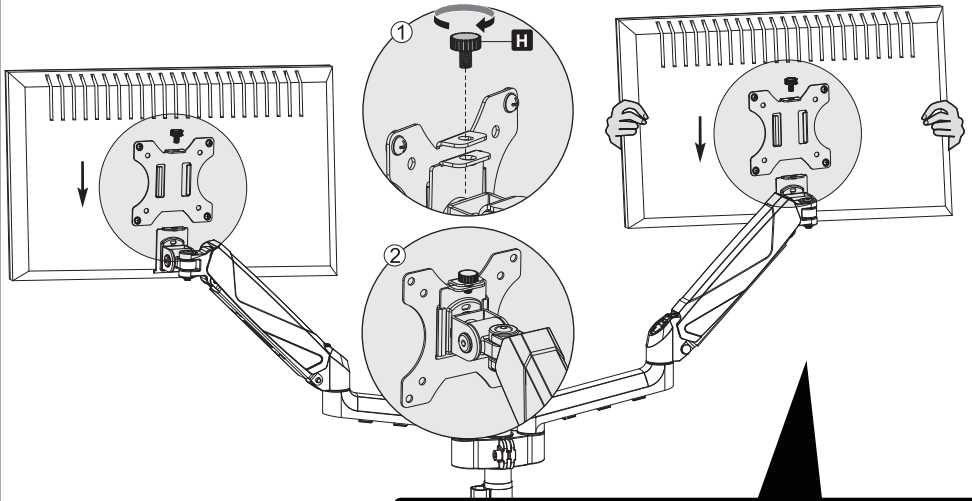
Do not tighten the screws excessively or your monitor might be damaged.

one or two piece

NOTE: Hand tighten screws to avoid over tightening.

STEP 6 : Hang Monitor

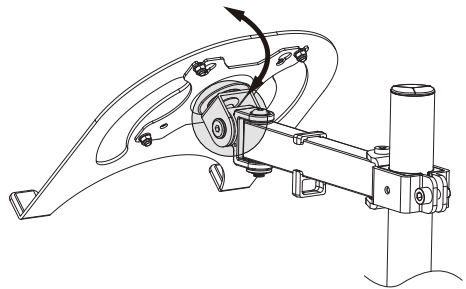
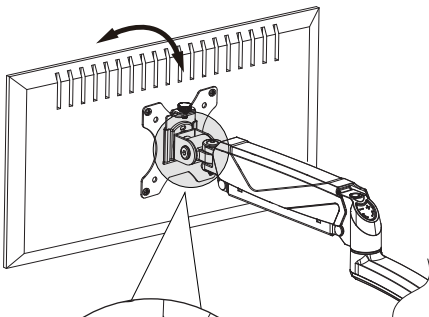
Slide the monitor onto the head of Swivel Arm (A). Install the Security Bolt (H).
Make sure the security bolt is tightened before you rotate the monitor.



⚠ Important Notice:

The pressure of the gas spring is initially set at the lowest value. So when the monitor is hung on, make sure you hold it with both hands and **DO NOT** let it go down suddenly.

STEP 7 : Tilt Adjustment

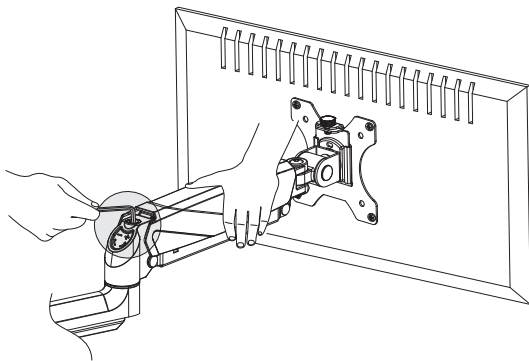
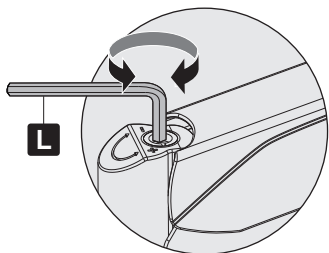


1. Slightly loosen the tilting bolt.
2. Adjust monitor and laptop tray to your desired tilt angle.
3. Retighten tilting bolt to secure the monitor and front-panel in place.

K

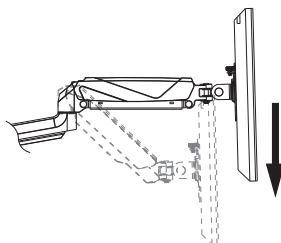
STEP 8 : Gap Spring Tension Adjustment

For intended functioning of the mount, you may need to adjust the tension of Arm (A) in accordance with your monitor weight by 6 mm Allen Key (L).



Note 1:

Be sure to keep the arm in horizontal position during adjustment. Or else it would be difficult to adjust the mount or damage the mount.

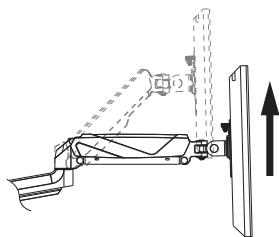


Situation 1: Arm falls down

Upper Arm with monitor falls down and fails to stay where intended.

Solution:

Turn the inside screw counterclockwise ("+" direction) to increase gas spring tension until the arm can stay as intended.



Situation 2: Arm rises up

Upper Arm with monitor rises up and fails to stay where intended.

Solution:

Turn the inside screw clockwise ("- " direction) to decrease gas spring tension until the arm can stay as intended.

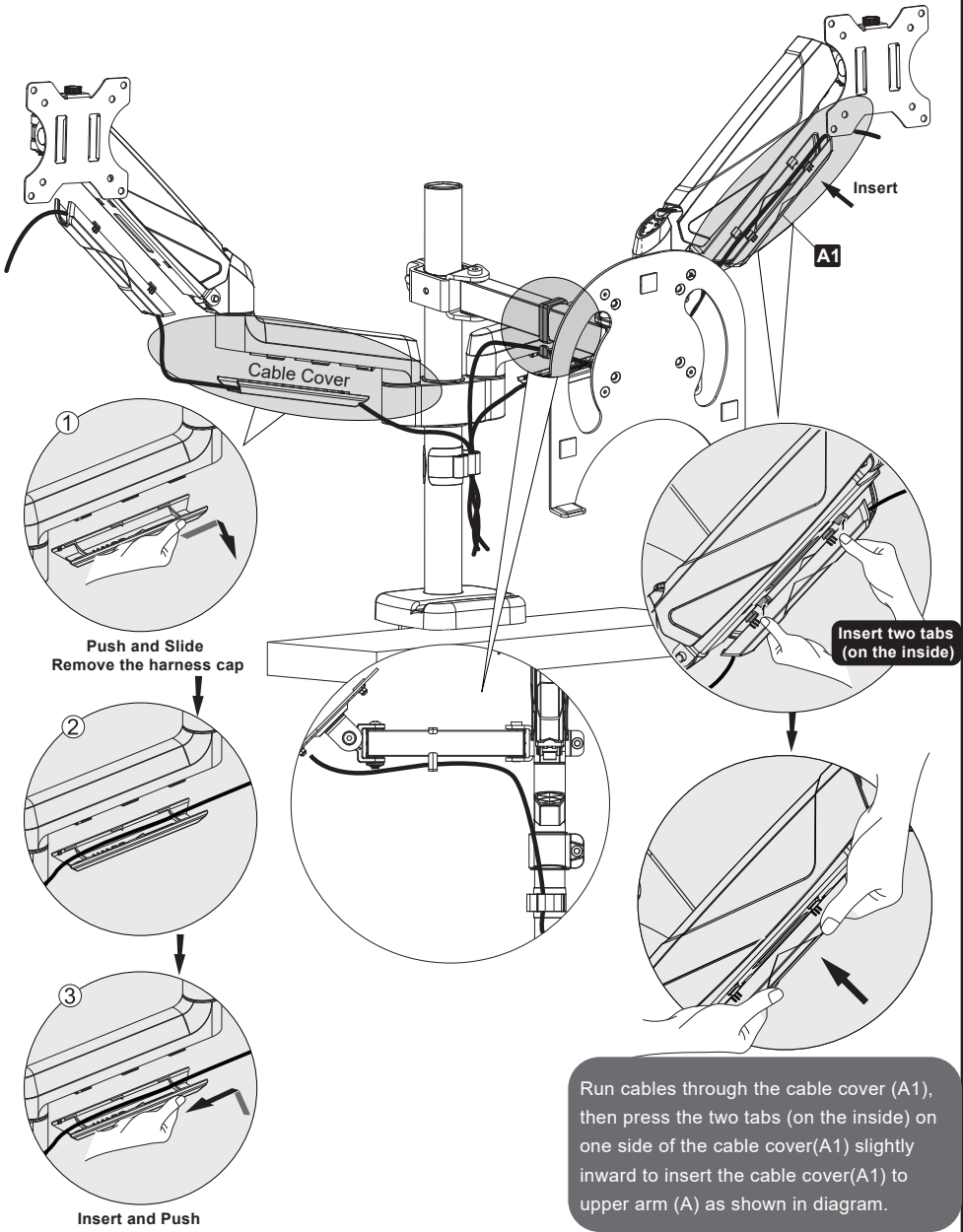
Note 2:

For how many circles the screw should be turned, please refer to the table below.

Monitor Weight	2kg	3kg	4kg	5kg	6kg	7kg	8kg	9kg
Circles(AT LEAST)	min	2	4	6	8	10	12	15

STEP 9 : Cable Management

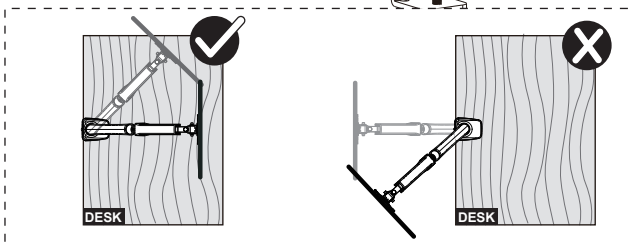
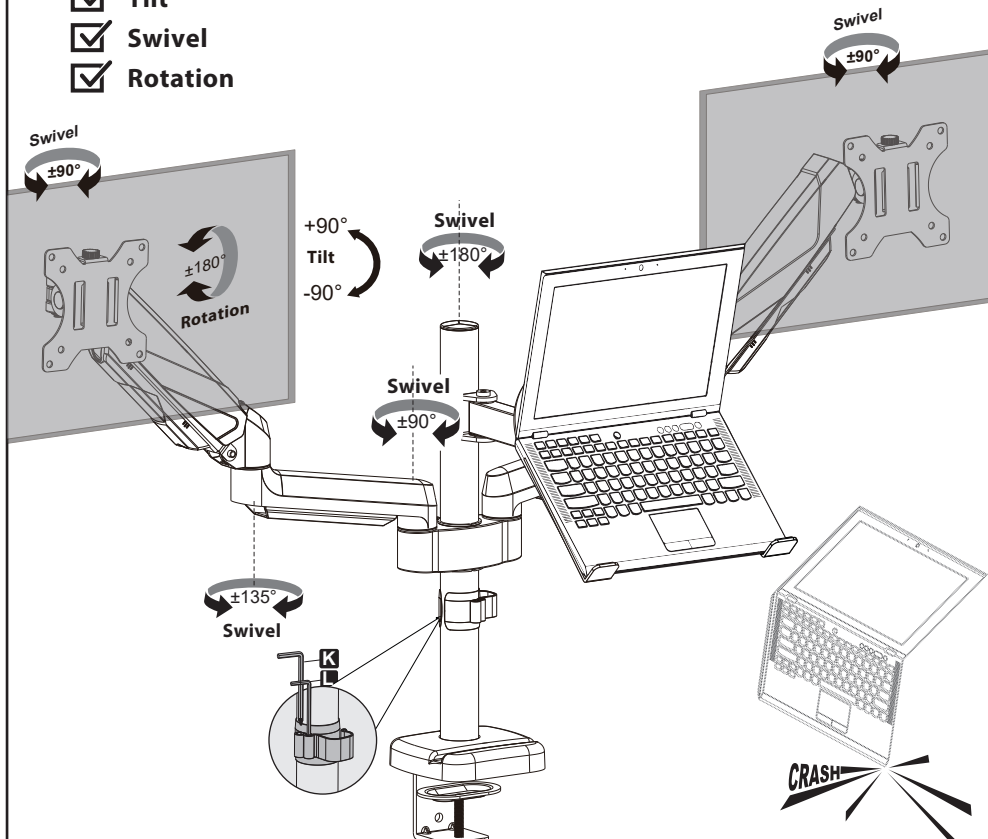
Run cables through the cable cover as shown in diagram.



Adjust as Desired

Adjust monitor position and rotation.

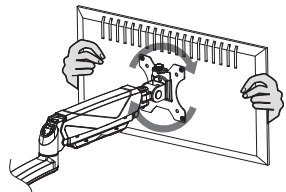
- Tilt
- Swivel
- Rotation



⚠ Caution:
Please be careful to avoid Laptop falling off during use.

Please do not move stand outside desk for safety!

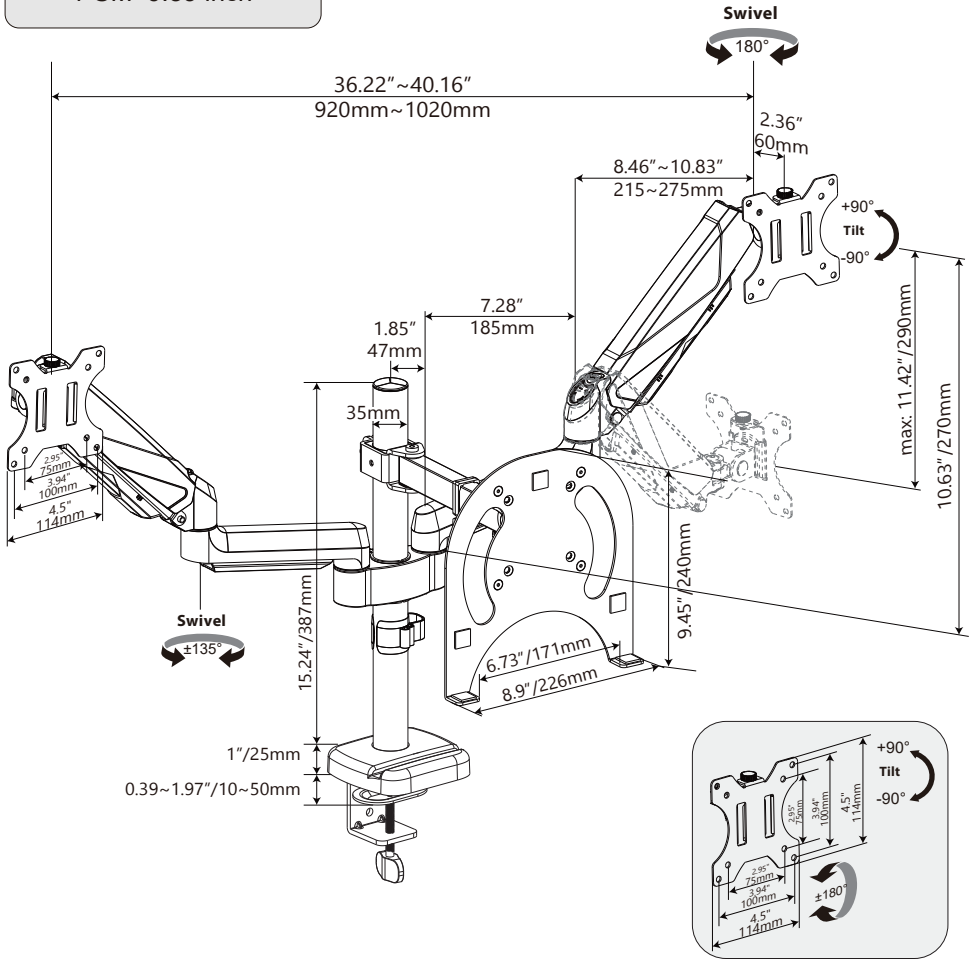
Note: To ensure stability, the tightness of the rotating axis has been preset, so it would be kind of difficult to rotate the VESA plate.
Suggestion: Please attach the monitor first, then hold the two sides of it with both hands, and rotate vigorously. If that doesn't work out, please do not hesitate to ask for our help.



Product Dimensions

Unit Conversion

1 CM≈0.39 inch



⚠ CAUTION AND MAINTENANCE:

- Don't allow children to climb, stand, hang, or play on any part of monitor or stand.
- This product is intended for indoor use only. Using this product outdoors may lead to product damage or personal injury.
- Check if that the bracket is secure and safe to use at regular intervals (at least every three months).