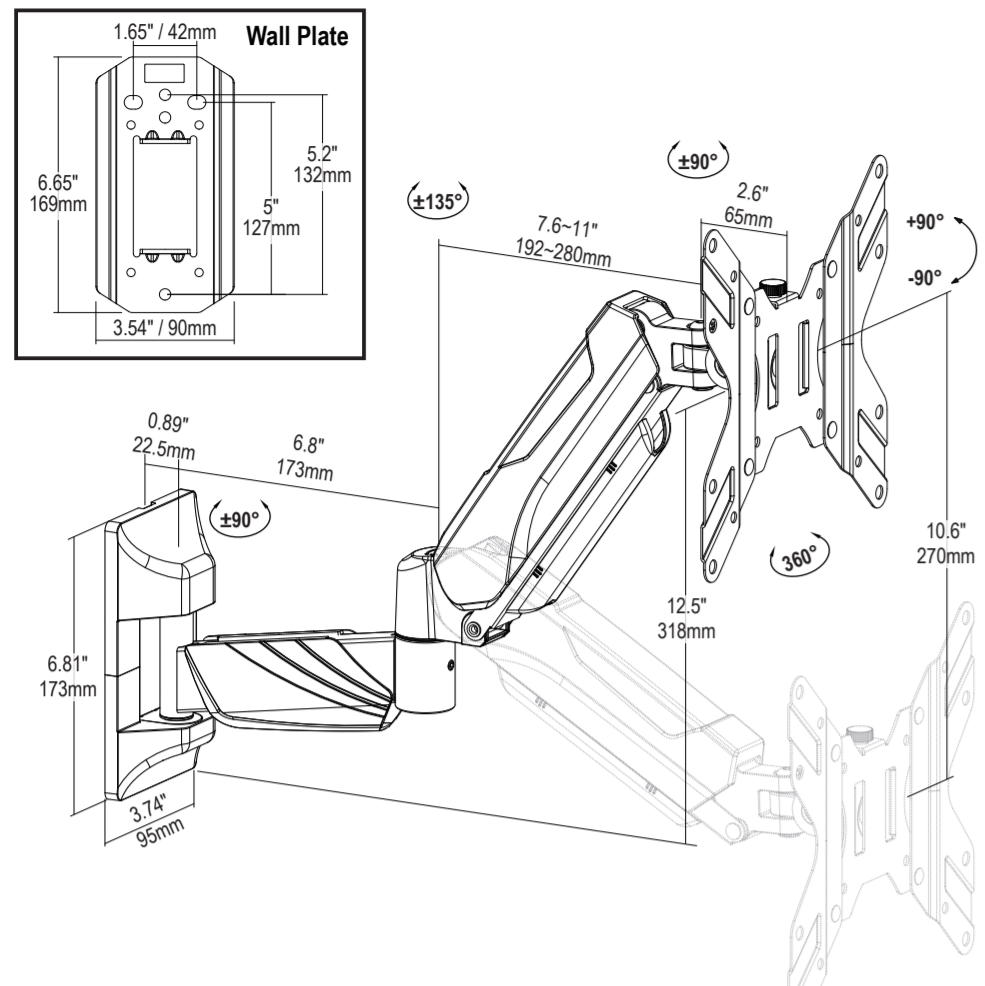


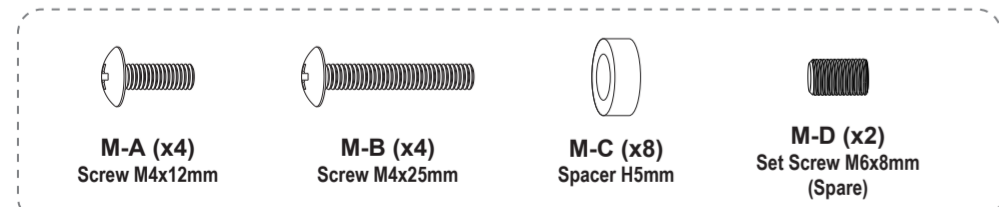
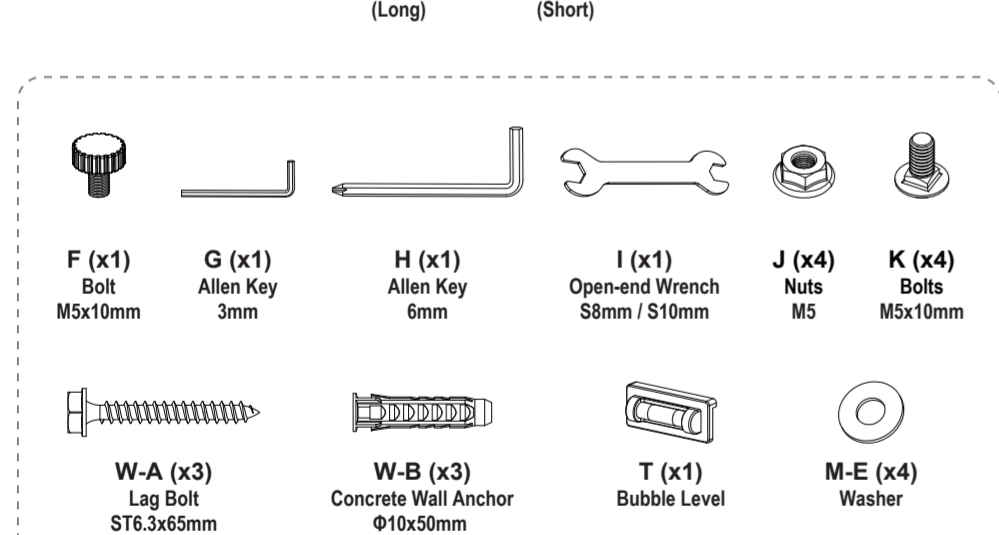
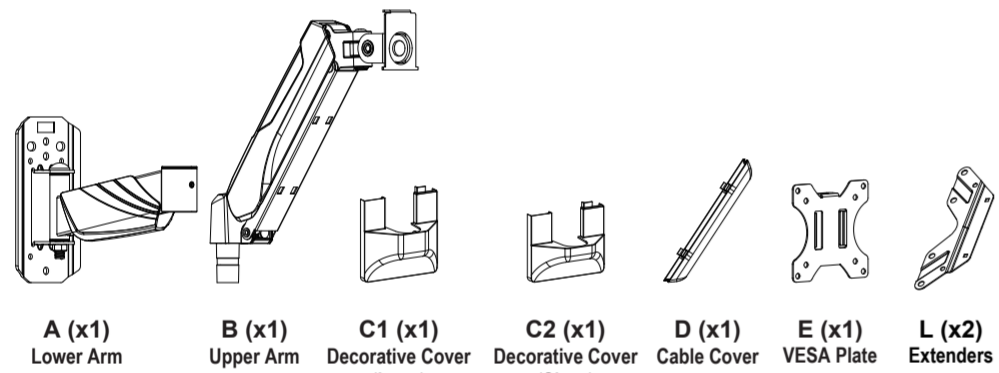
# INSTALLATION INSTRUCTION

YZ2315\_US2.0



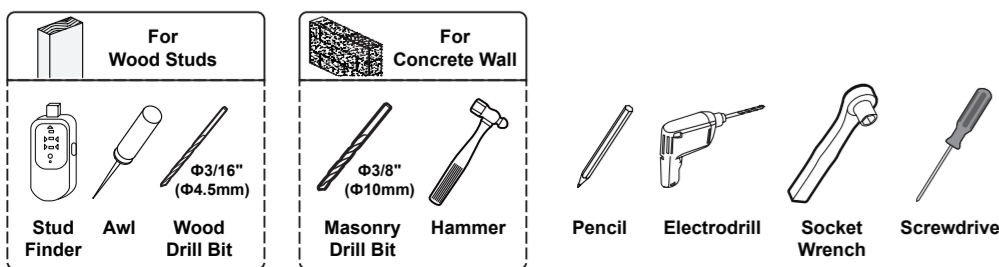
If you have any questions, please feel free to contact Customer Service via Amazon before returning.

## Supplied Parts and Hardware



NOTE: Not all parts and hardware included will be used.

## Extra Tools You Need (Not Supplied)



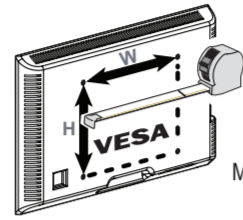
## Safety Caution

Please read this instruction carefully before installation. If you do not understand these instructions or have doubts about the safety of the installation, assembly or use of this product, please contact us.

- This product is designed for use in wood stud or solid concrete wall.
  - DO NOT install into drywall alone.**
  - The wall must be capable of supporting five times the weight of the monitor and mount combined.
  - Incorrect installation may result in product damage/property damage or body injury.
- We shall bear no responsibility for any damage or injury resulted from incorrect installation, incorrect assembly or misuse.

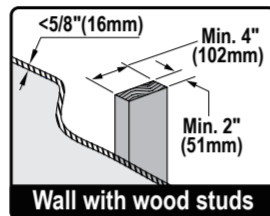
**WARNING:** This product contains small items that could be a choking hazard if swallowed. Before starting assembly, verify all parts are included and undamaged. If any parts are missing or damaged, do not return the damaged item to your dealer; please contact our customer service team. Never use damaged parts!

## Must Check Before Getting Started

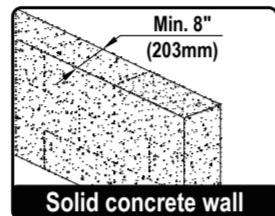


VESA Pattern (W × H):  
MIN: 75mm×75mm / 3\"/>

**Load Capacity**  
3 ~ 12 kg  
6.6 ~ 26.4 lbs  
**WARNING: DO NOT exceed the maximum weight indicated.**



Wall with wood studs



Solid concrete wall

**CAUTION:**  
DO NOT install into drywall alone.



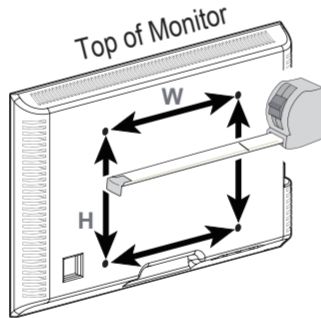
**Attention** Tension adjustment should be done only after monitor installation

**WARNING:** Gas Spring Arm is under pressure and should be handled with care. Failure to follow the instructions may result in damage to the mount and/or personal injury.

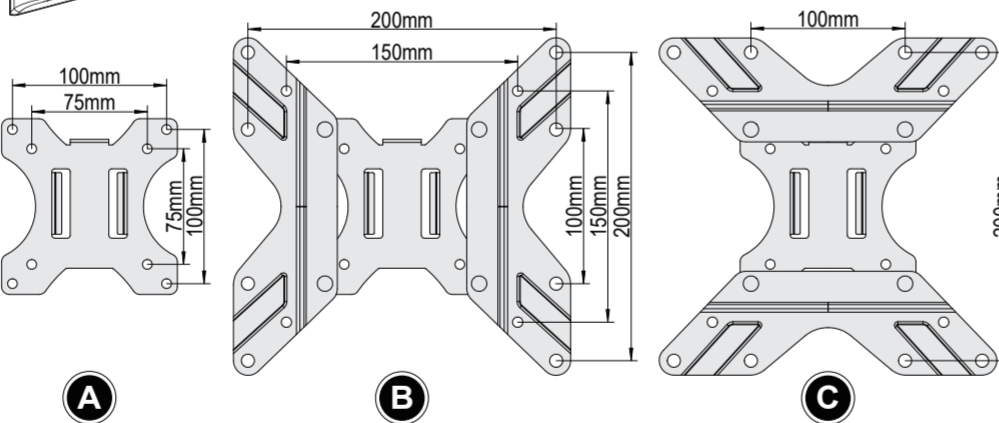
## 1 Attach VESA Plate to Monitor

### 1-1 Select VESA Plate Configuration

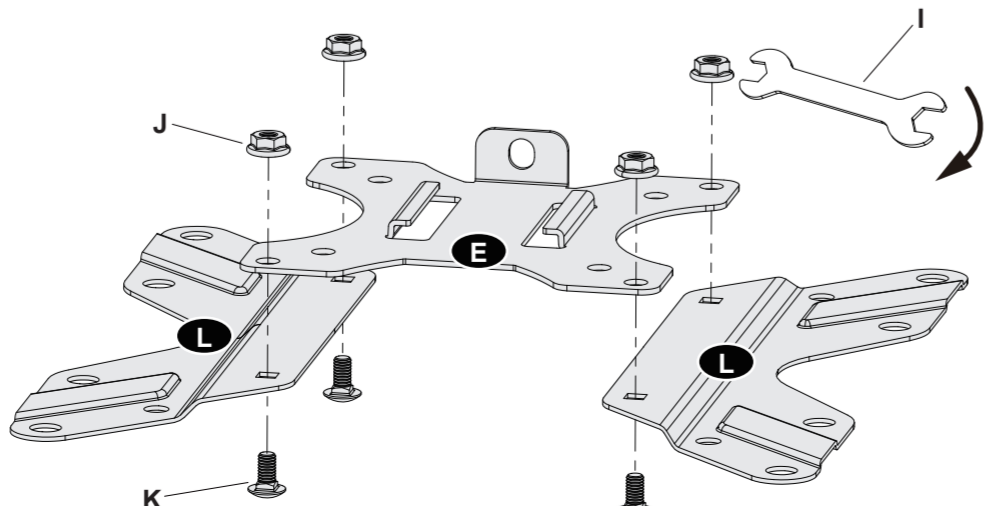
Measure the width and the height of the square or rectangle formed from the VESA holes pattern. Select the configuration to use based on the measurement from monitor.



VESA Pattern (WxH)	Configuration	VESA Pattern (WxH)	Configuration
75mm x 75mm	A	200mm x 100mm	B
100mm x 100mm	A	200mm x 200mm	B
150mm x 150mm	B	100mm x 200mm	C

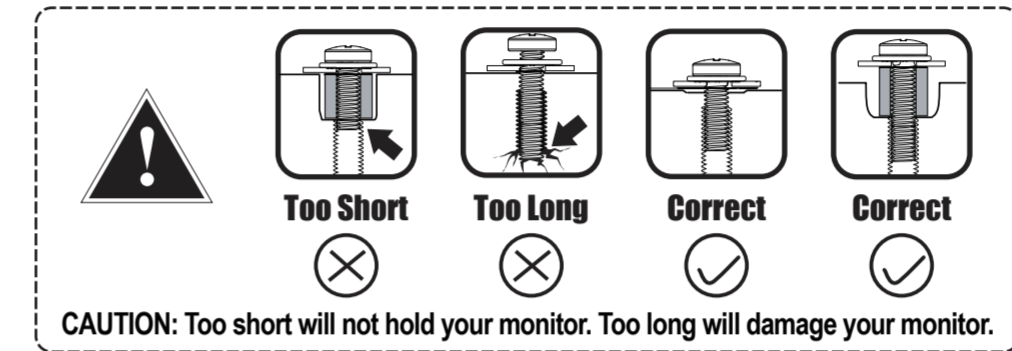
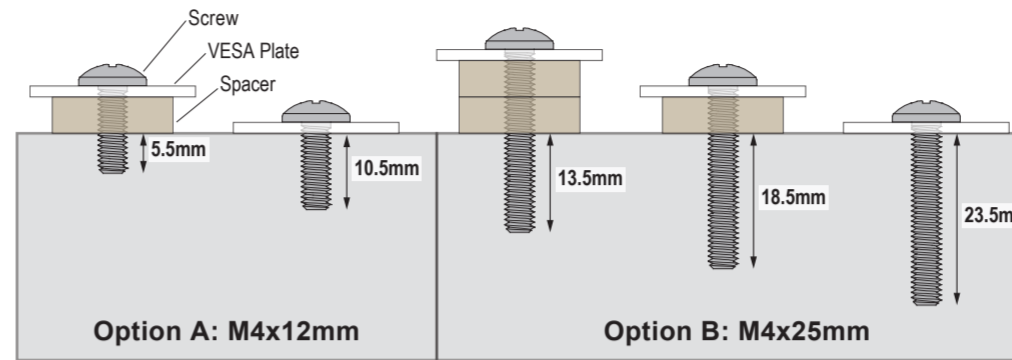


**Assemble Extenders (When VESA > 100mm)**  
If your monitor hole pattern is greater than 100×100mm, attach extenders (L) to VESA plate (E) using nuts (J) and bolts (K).



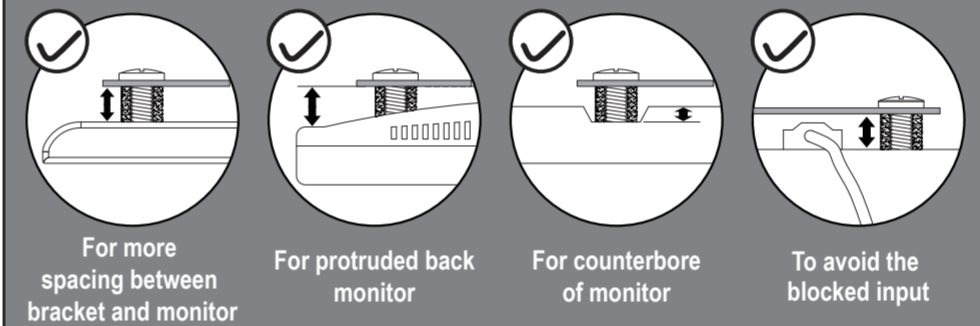
## 1 Attach VESA Plate to Monitor

### 1-2 Select Correct Monitor Screw Length

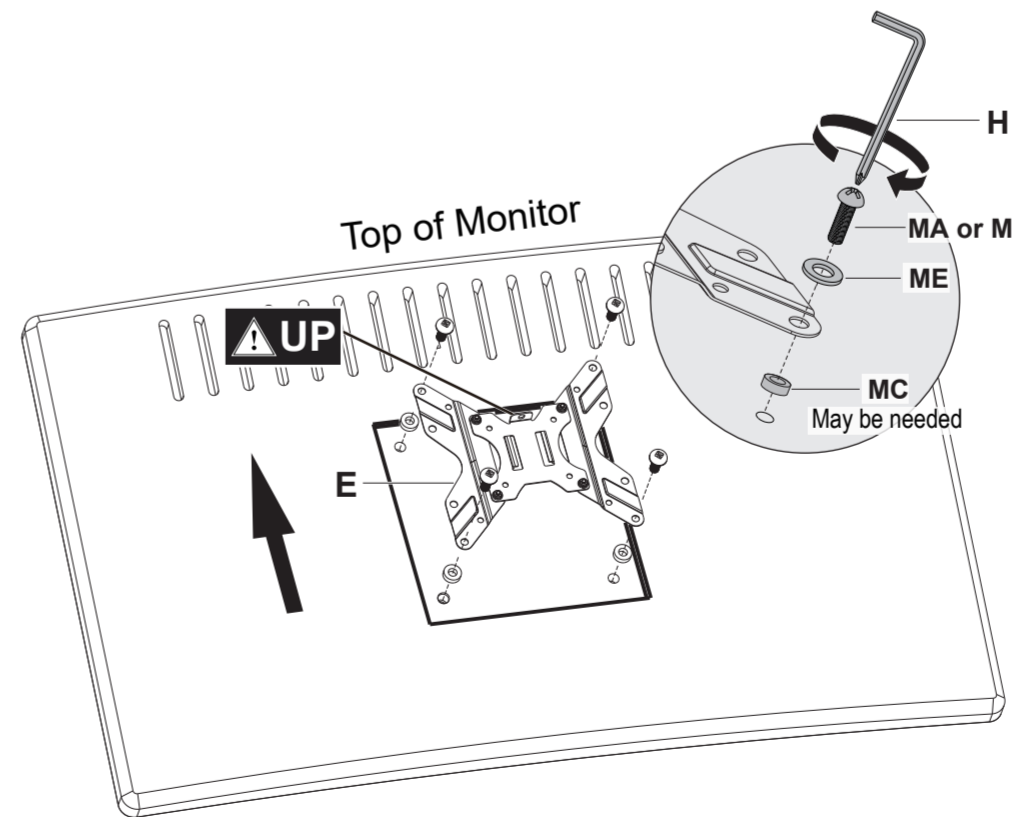


### Which Situation Needs Spacers?

If the screw is too long or the surface is uneven, please choose the appropriate screws and spacers for your monitor.



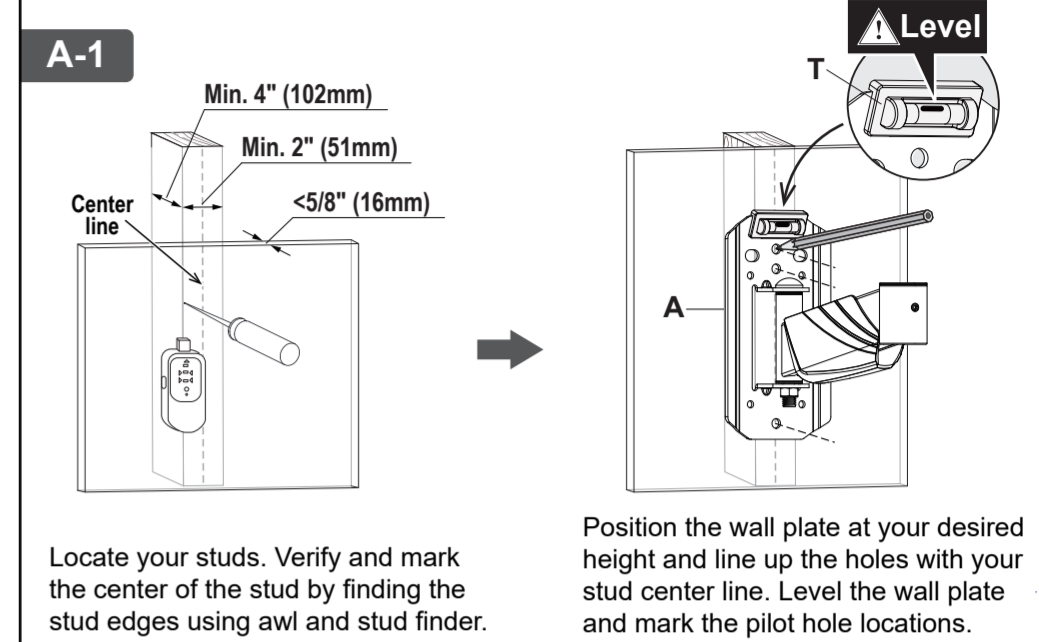
### 1-3



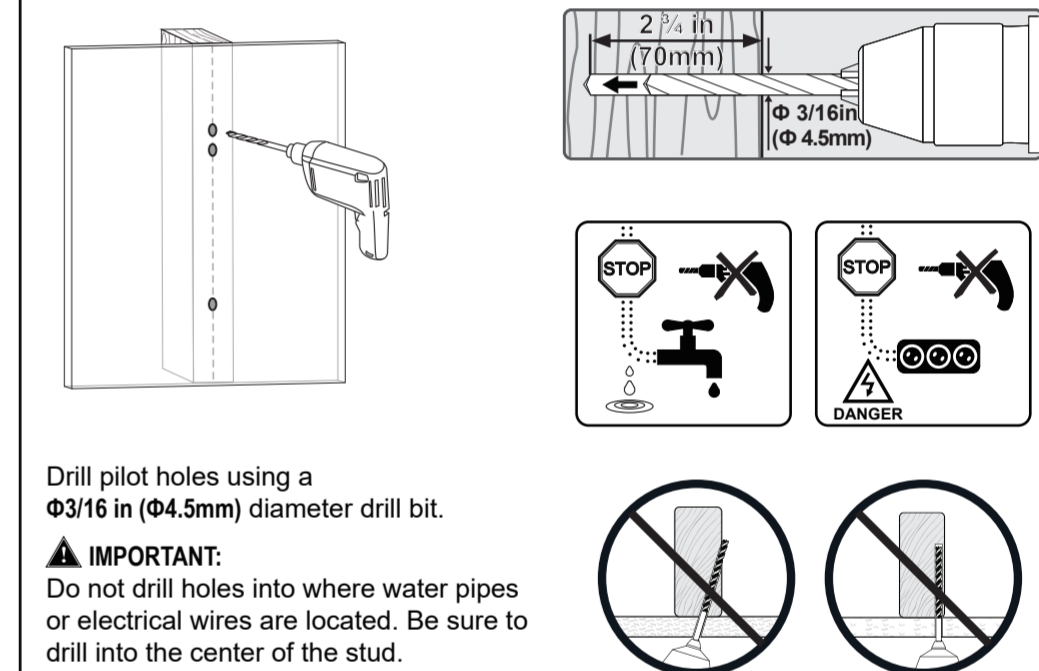
**CAUTION:** Do not tighten the screws excessively or tighten them by using the Electrodrill, or your monitor might be damaged.

## 2-A Attach Arm to Wall

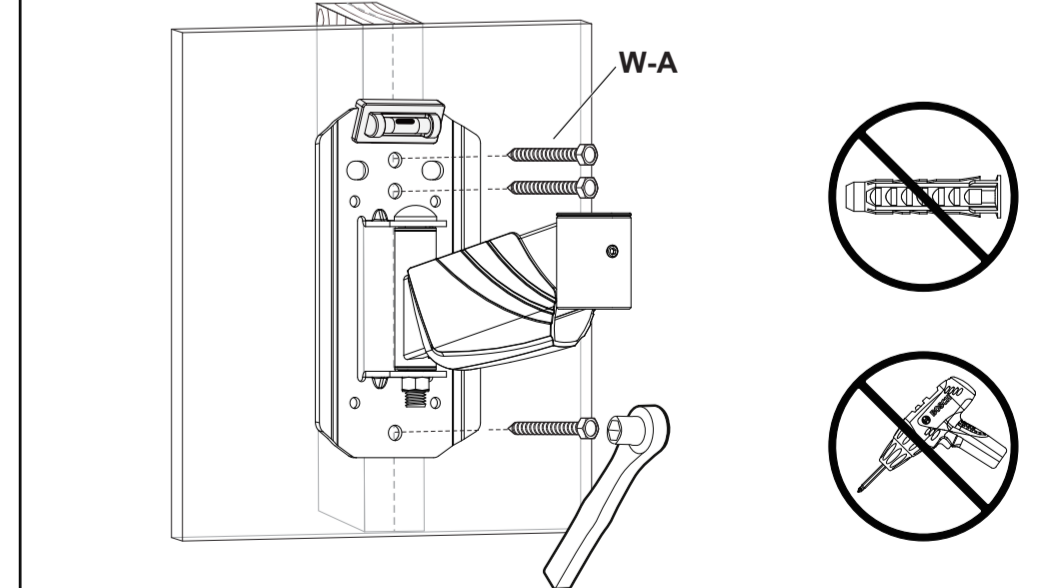
### OPTION A: Wood Stud Installation



### A-2



### A-3



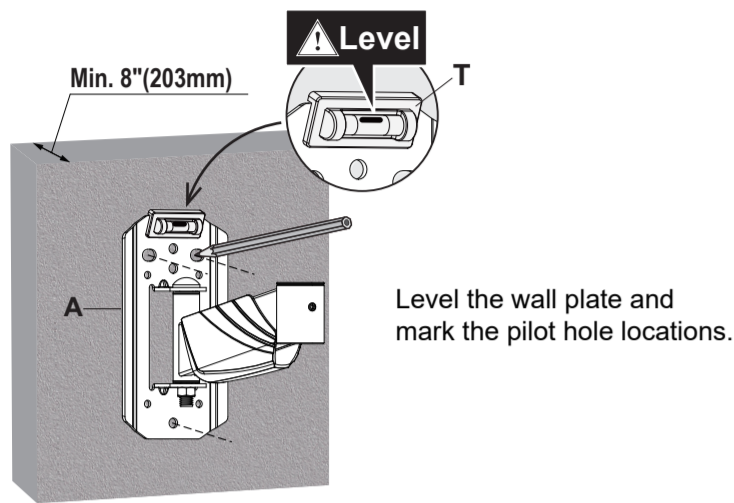
Install wall plate using lag bolts **W-A** with Socket Wrench, NO Electrodrill. No anchors when installed onto the wood studs.

**CAUTION:** To avoid potential personal injury or property damage: All 3 lag bolts **W-A** MUST BE firmly tightened to prevent unwanted movement of the wall plate assembly. Ensure the wall plate assembly is securely fastened to the wall before continuing on to the next step.

## 2-B Attach Arm to Wall

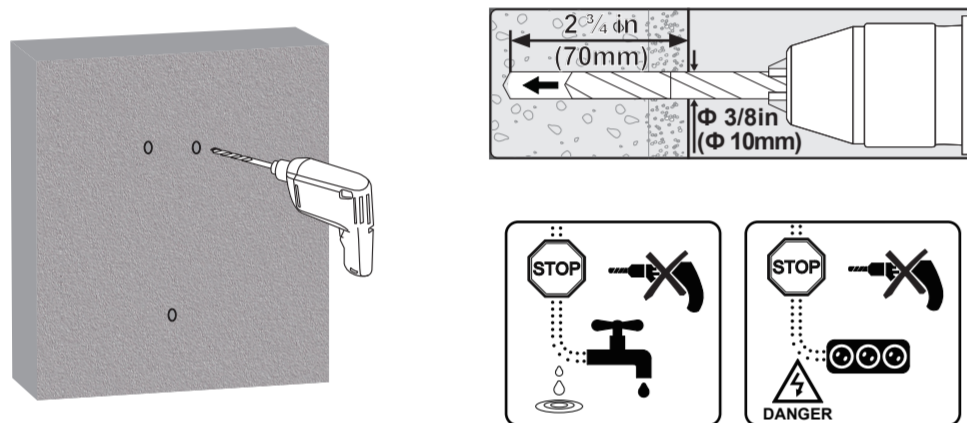
### OPTION B: Solid Concrete Wall Installation

B-1



Level the wall plate and mark the pilot hole locations.

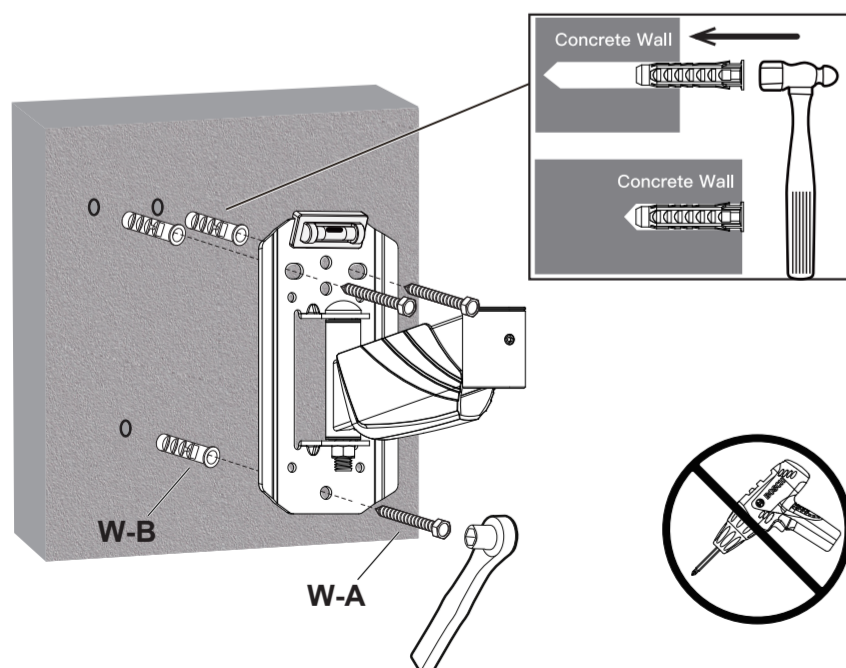
B-2



Drill pilot holes using a  $\Phi 3/8$  in ( $\Phi 10$ mm) diameter drill bit.

**IMPORTANT:**  
Do not drill holes into where water pipes or electrical wires are located, or mortar between blocks.

B-3



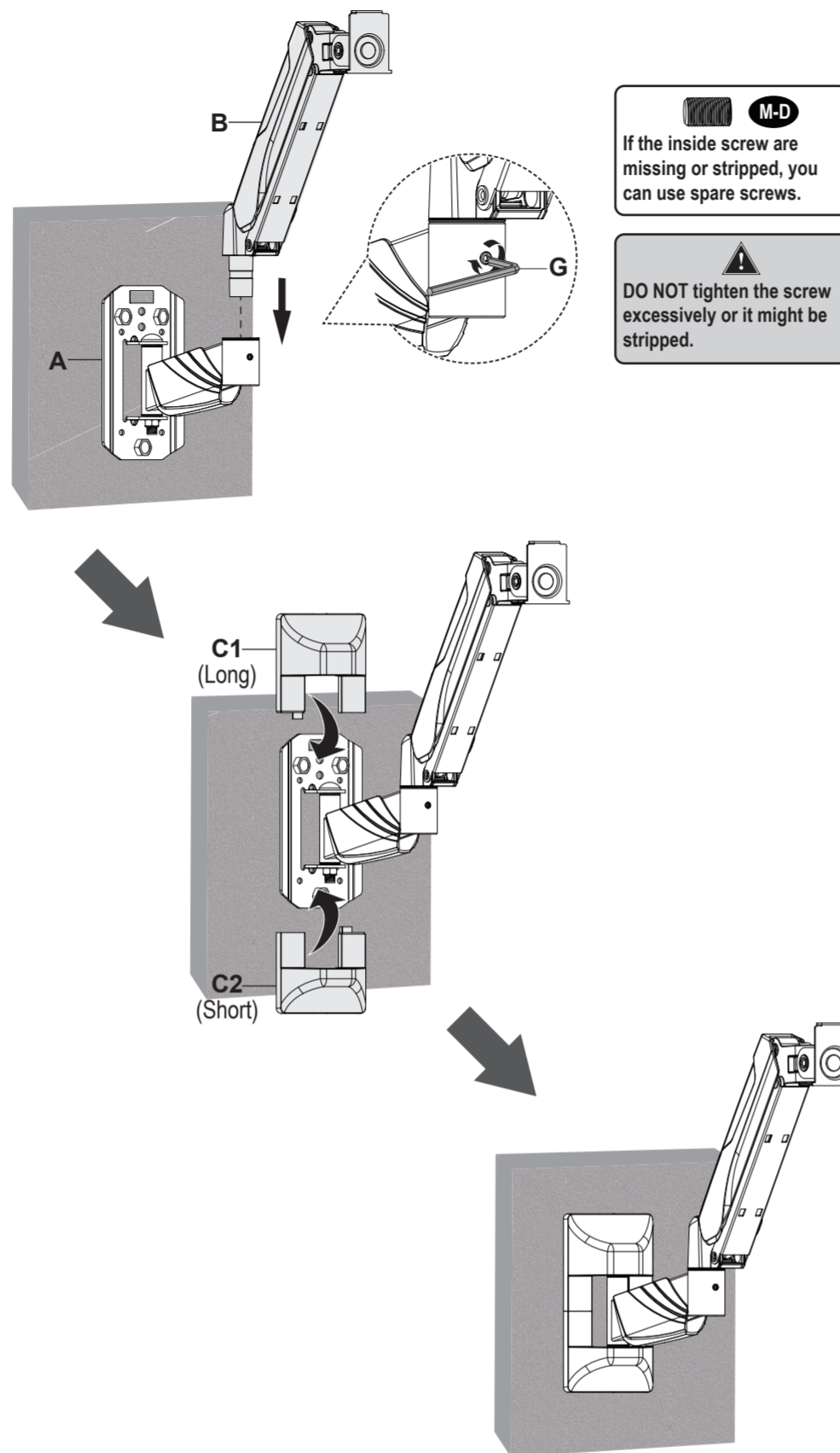
Use the hammer to knock anchors into the concrete wall. Be sure the anchors are seated flush with the concrete surface. Install wall plate using lag bolts (W-A) and anchors (W-B) with Socket Wrench, NO Electrodrill.

#### CAUTION:

To avoid potential personal injury or property damage:  
All 3 lag bolts (W-A) **MUST BE** firmly tightened to prevent unwanted movement of the wall plate assembly. Ensure the wall plate assembly is securely fastened to the wall before continuing on to the next step.

## 3 Hang Monitor

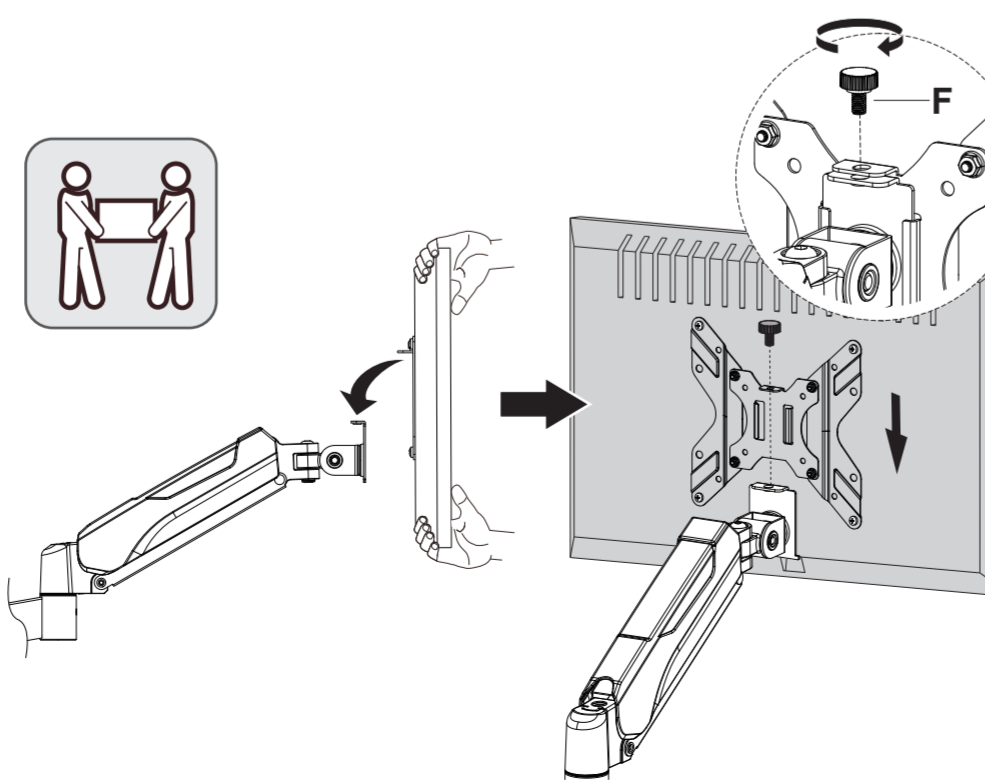
Install the Upper Arm (B) to the Lower Arm (A). Secure the arm by tightening the inside screw using 3mm Allen key (G). Attach Decorative Covers (C) to wall plate.



If the inside screw are missing or stripped, you can use spare screws.

**DO NOT** tighten the screw excessively or it might be stripped.

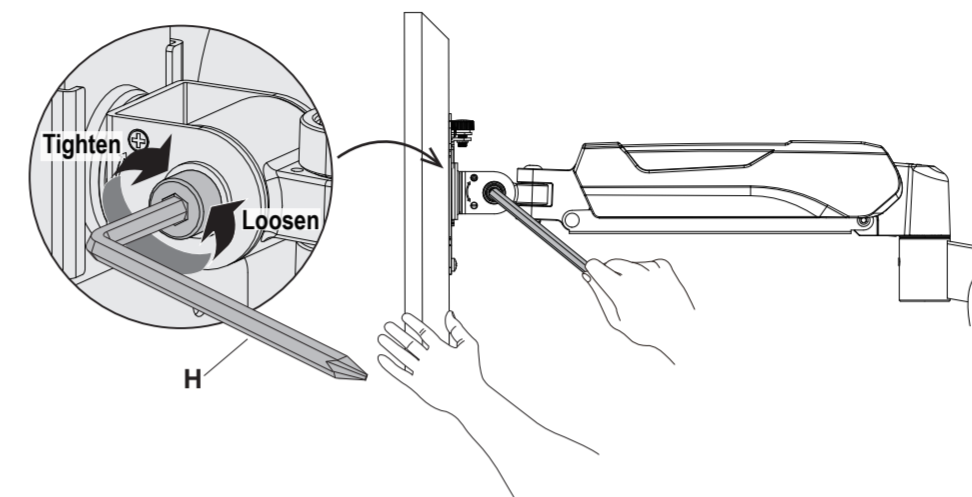
Slide the monitor onto the head of swivel arm, install the security bolt (F). Make sure the security bolt is installed before you rotate the monitor.



## 4 Adjustments (If necessary)

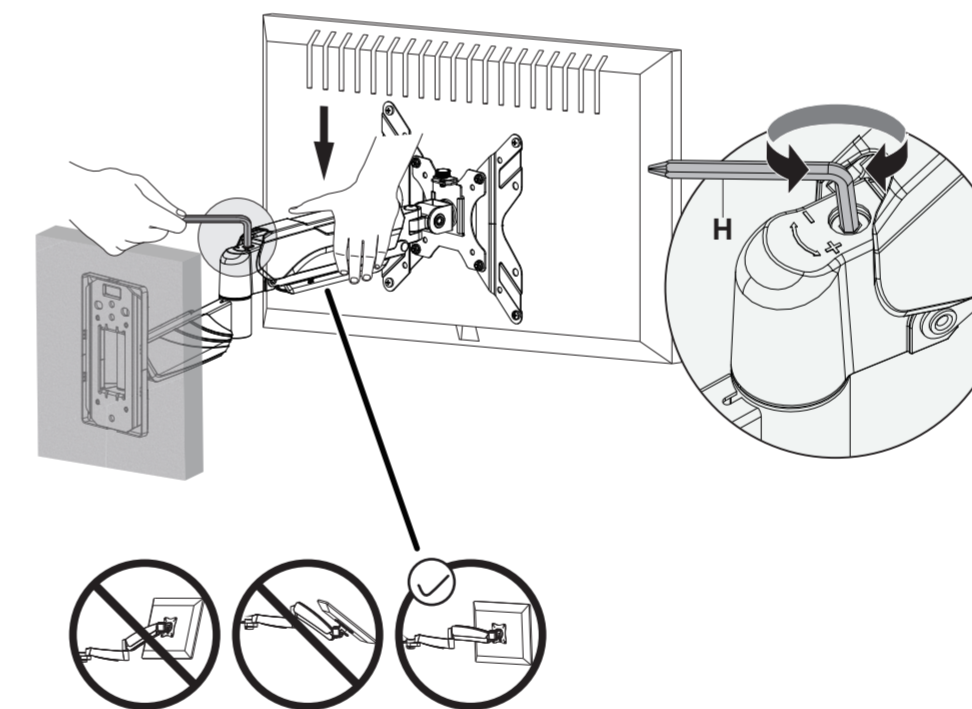
### 4-1 Tilt Adjustment

- Loosen the tilting bolt.
- Adjust monitor to your desired tilt angle.
- Retighten the tilting bolt to fix the intended angle.



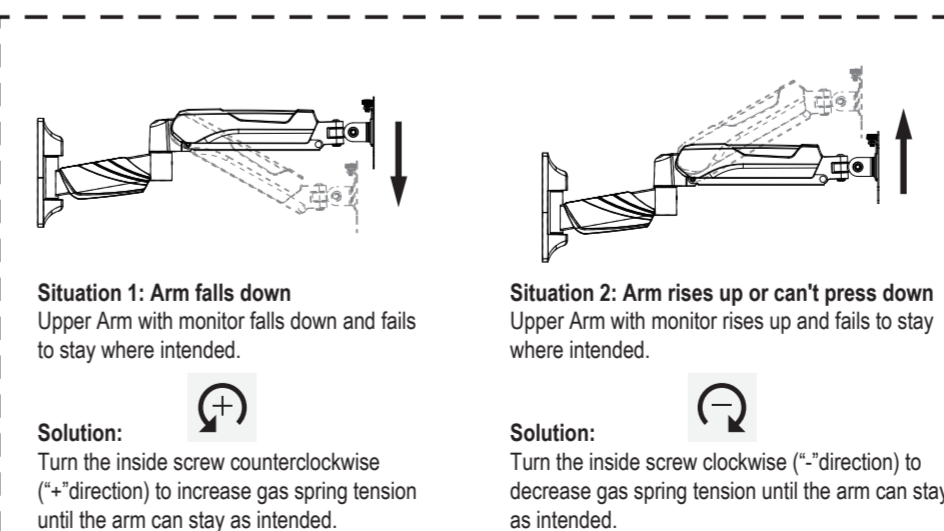
### 4-2 Tension Adjustment

The gas spring is pre-set for a load-bearing range of 8.8 lbs -13.2 lbs. For intended functioning of the mount, you will need to adjust the tension of Arm in accordance with your monitor weight by 6mm Allen Key (H).

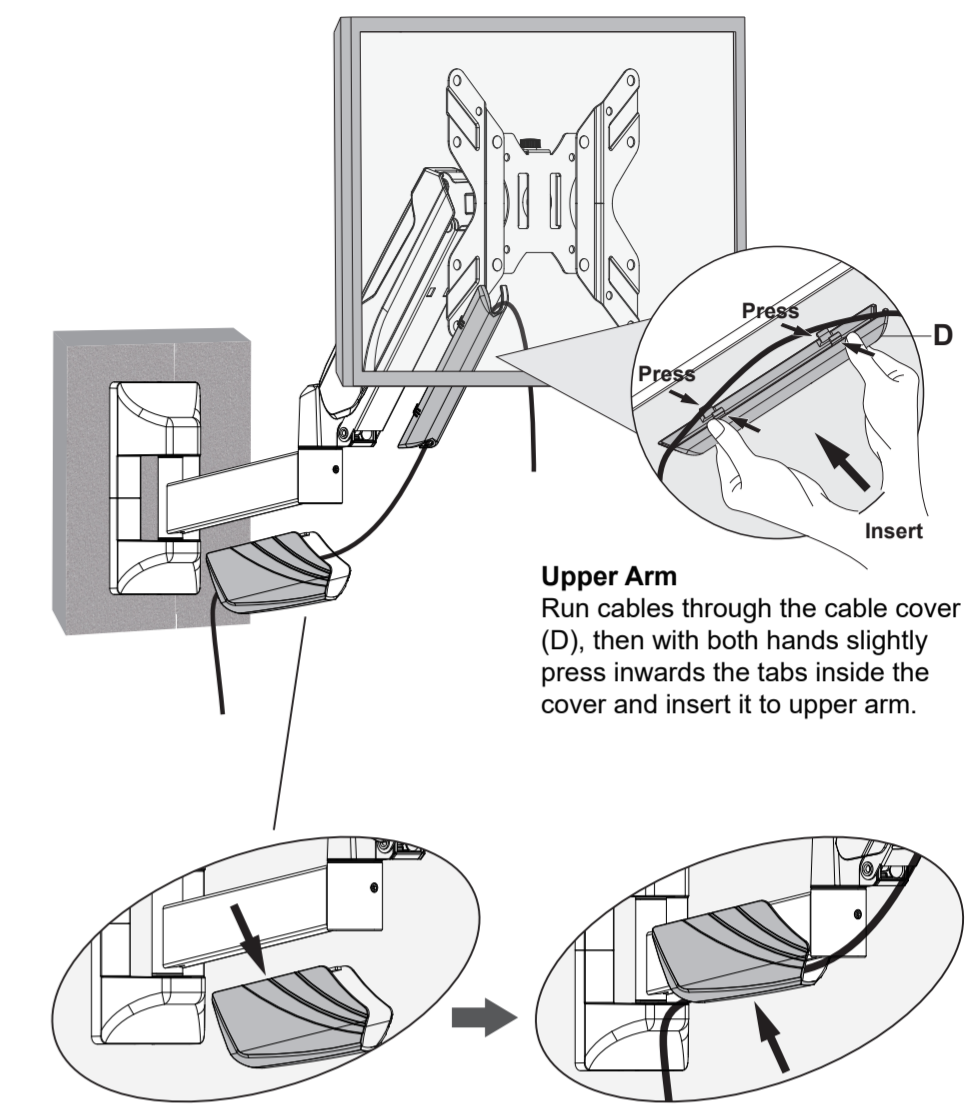


#### Note:

Be sure to keep the arm in a horizontal position during adjustment. Or else it would be difficult to adjust the mount or damage the mount.



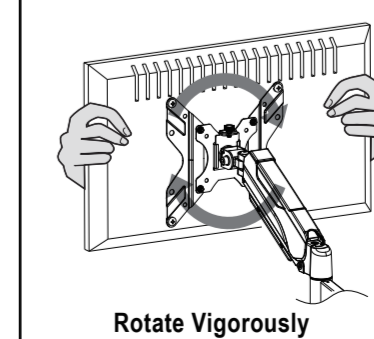
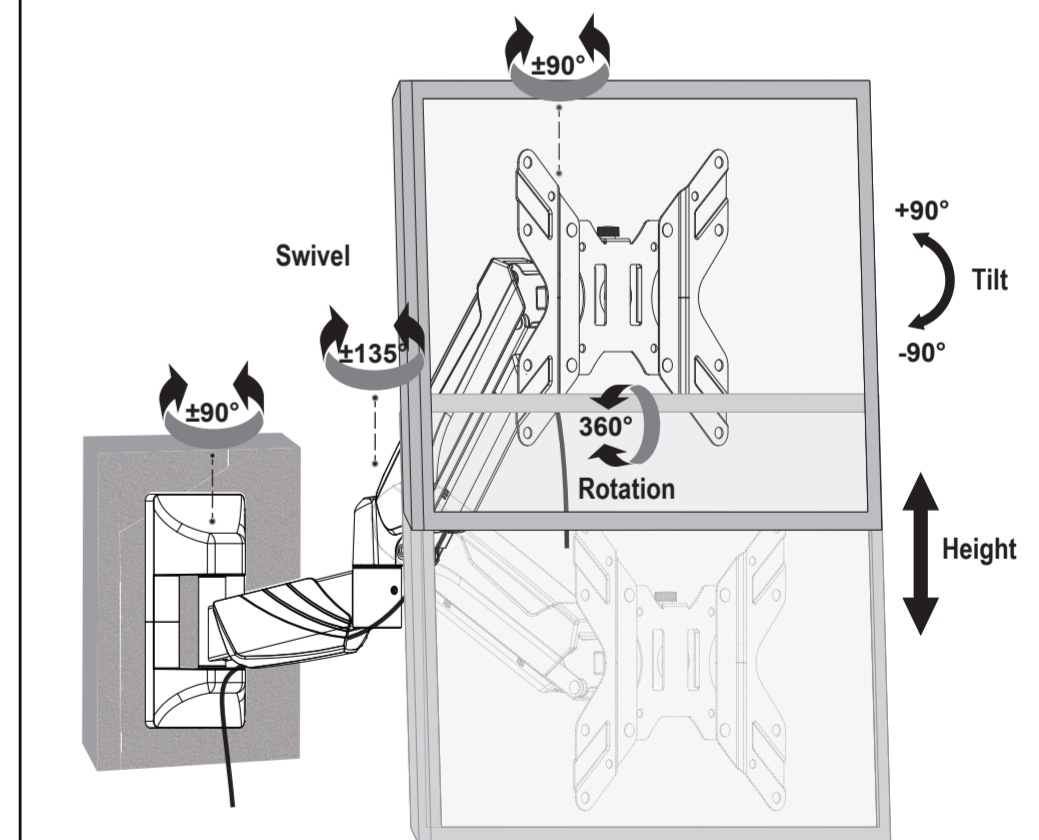
## 5 Cable Management



**Upper Arm**  
Run cables through the cable cover (D), then with both hands slightly press inwards the tabs inside the cover and insert it to upper arm.

**Lower Arm**  
Remove the cable cover, run cables through the cable cover, then install the cable cover again.

Adjust monitor position and rotation.



**Rotate Vigorously**

**Note:** To ensure stability, the tightness of the rotating axis has been preset, so it would be kind of difficult to rotate the VESA plate.

**Suggestion:** Please attach the monitor first, then hold the sides of it with both hands, and rotate vigorously. If that doesn't work out, please do not hesitate to ask for our help.