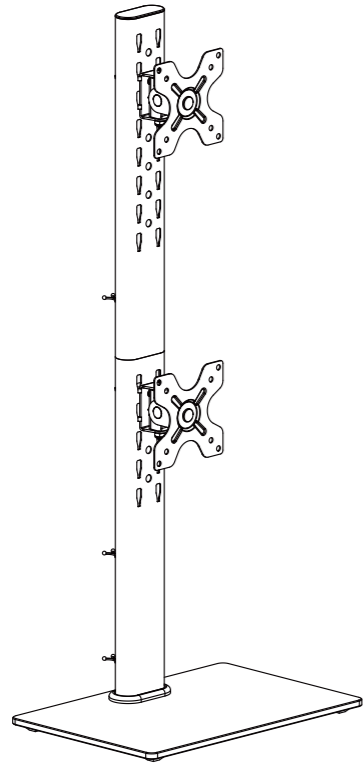


INSTALLATION INSTRUCTION



(33 lbs) x2
(15 kg) x2

75x75mm
100x100mm

(ZDT10-C02-US1)

If you have any questions, please feel free to contact us via Amazon.

Safety Caution

BEFORE ASSEMBLY

- Layout all components and hardware. Check all parts are included and undamaged.
- Should anybody intends to install or use this monitor stand, please read and understand this manual carefully.
- If you do not understand these instructions or have any doubt about the safety instructions, assembly or use of this product, please contact our customer service.

WARNING

- This product contains small items that could be a choking hazard if swallowed.
- KEEP AWAY FROM CHILDREN UNDER 3 YEARS OLD. ADULT SUPERVISION IS REQUIRED.
- Improper installation, such as using the product for monitors over its load capacity or for any purpose not explicitly specified, may cause damage or serious injury. We would not be liable for any damage or injury caused by improper mounting or inappropriate use.

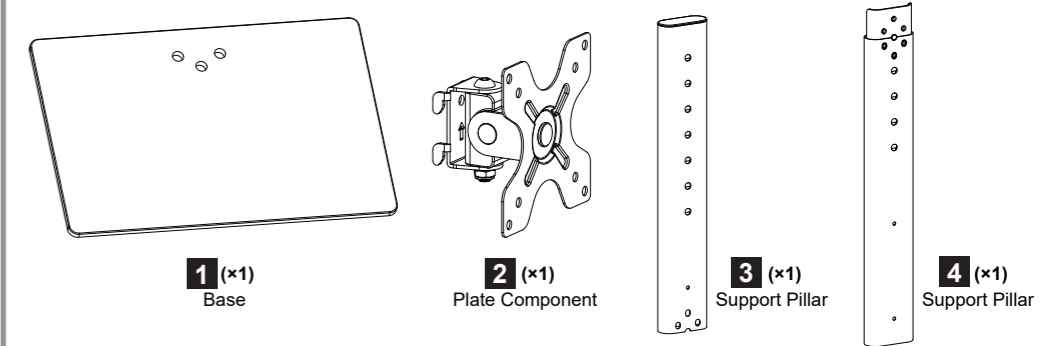
CAUTION AND MAINTENANCE

- Never allow children to climb, stand, hang, or play on any part of monitor or stand.
- This product is intended for indoor use only. Using this product outdoors could lead to product failure and personal injury.
- Check that the bracket is secure and safe to use at regular intervals (at least every three months).

Installation Tools (Not Included)



Supplied Parts and Hardware

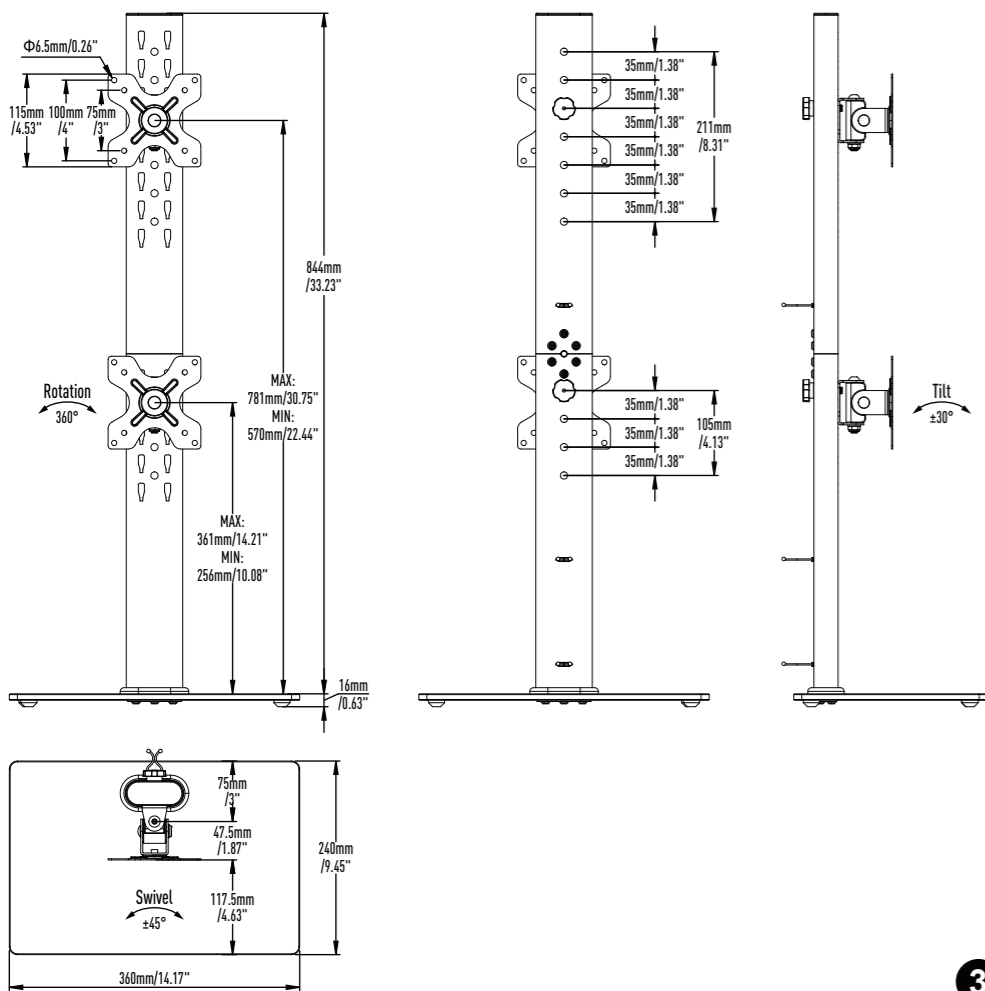


Hardware (Product)						
Bolt M6 x 30mm A x3	Washer x1 B	Handle Bolt x3 C x2	Plastic Cover x1 D	Wire Clip x3 E	Foot Pad x4 F	Allen Key 4mm / 5mm x1 G
Bolt M6 x 10mm H x6						

Hardware (Monitor)						
Philips Screws M4 x 12mm MA x8	Philips Screws M4 x 30mm MB x8	Philips Screws M5 x 16mm MC x8	Philips Screws M5 x 25mm MD x8	Philips Screws M6 x 16mm ME x8	Philips Screws M6 x 25mm MF x8	Spacers H13mm MG x8

NOTE: Not all hardware included will be used.

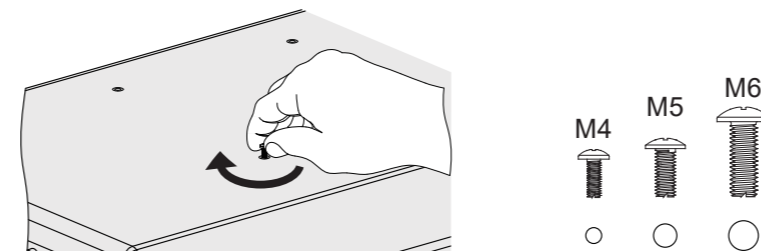
Product Dimensions



STEP 1: Attach the Plate Component to Monitor

1-1 Select Monitor Screw Length

Thread screws by hand into the threaded holes on the back of your monitor after selecting which screw diameter fits your monitor.



1-2 Select Monitor Screw Length

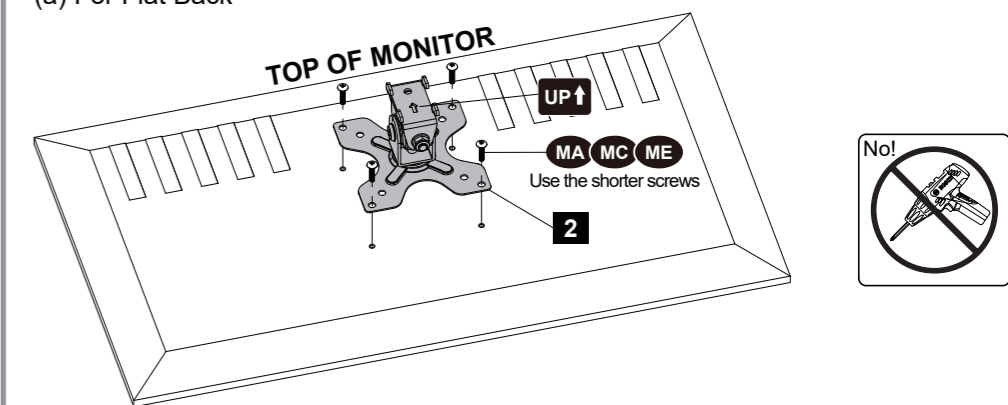
When attaching plate to the flat screen, be careful not to over tighten screws and be sure that screws do not bottom out in the mounting holes.



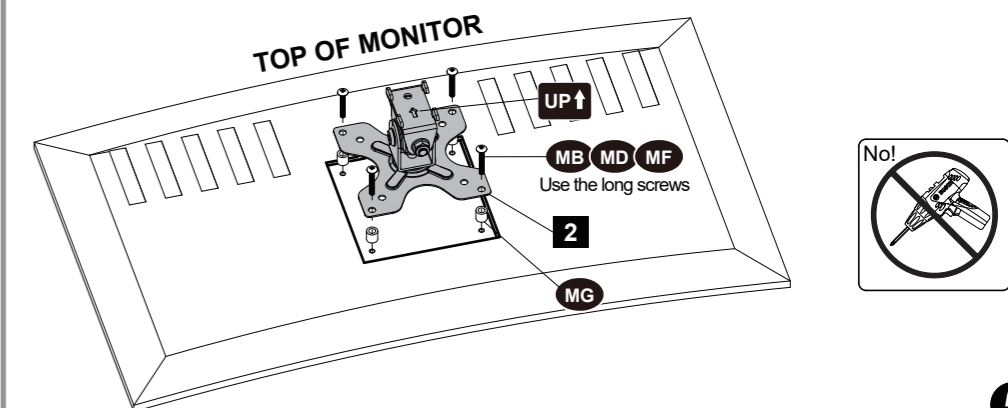
STEP 1: (Continued)

1-3 Attach the Plate Component

(a) For Flat Back

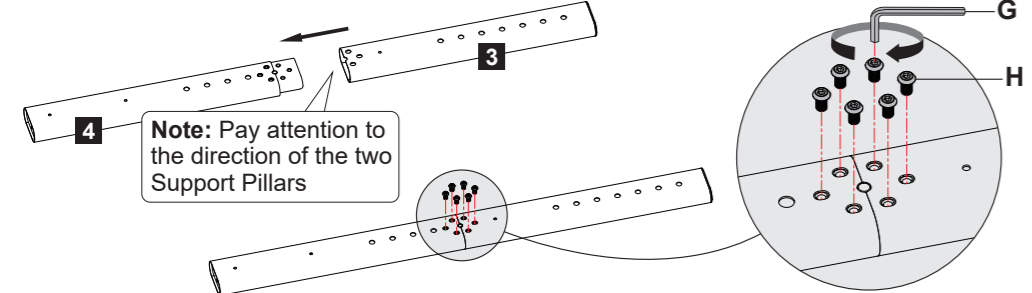


(b) For Round Back / Extra Space

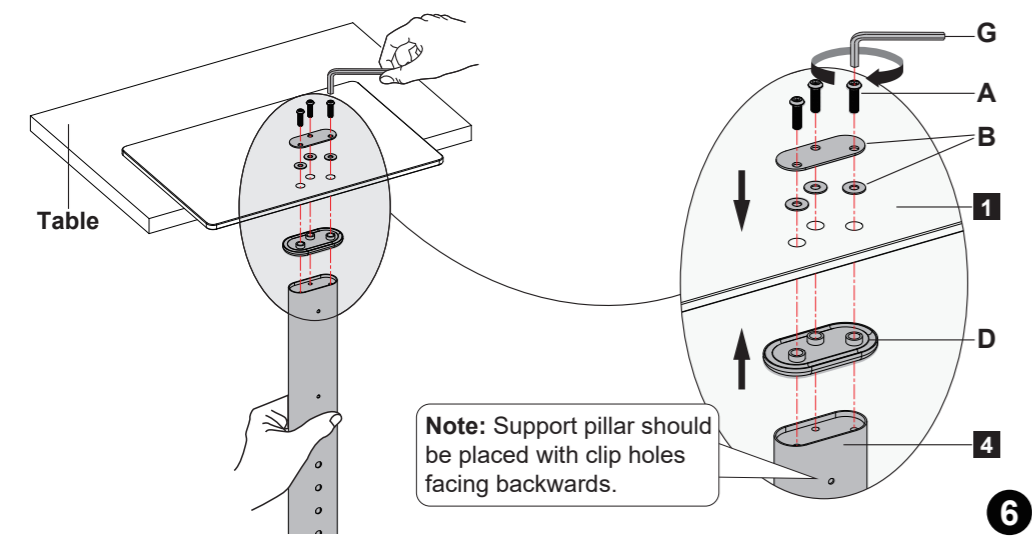


STEP 2: Support Pillar Installation

Connect two Support Pillars (3&4). Then insert 6pcs Screws (H) through the holes of Support Pillars (3&4), and use the 4mm Allen Key (G) to tighten.

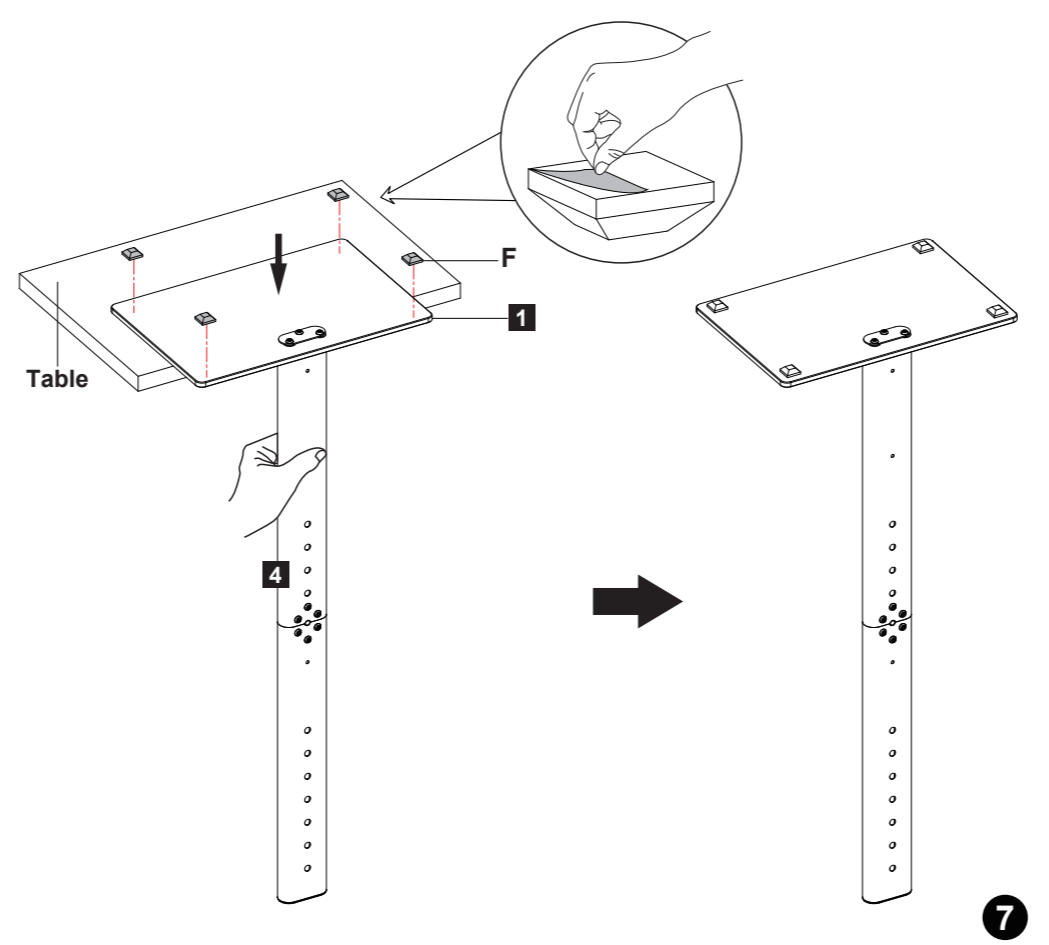


Put Base 1 on the table; put Washers (B) and Bolts (A) on the base; keep clip holes of Support Pillar 4 toward backside then put Plastic Cover (D) and Support Pillar 4 under the base. Then tighten the bolts (A) with the 4mm allen key (G).



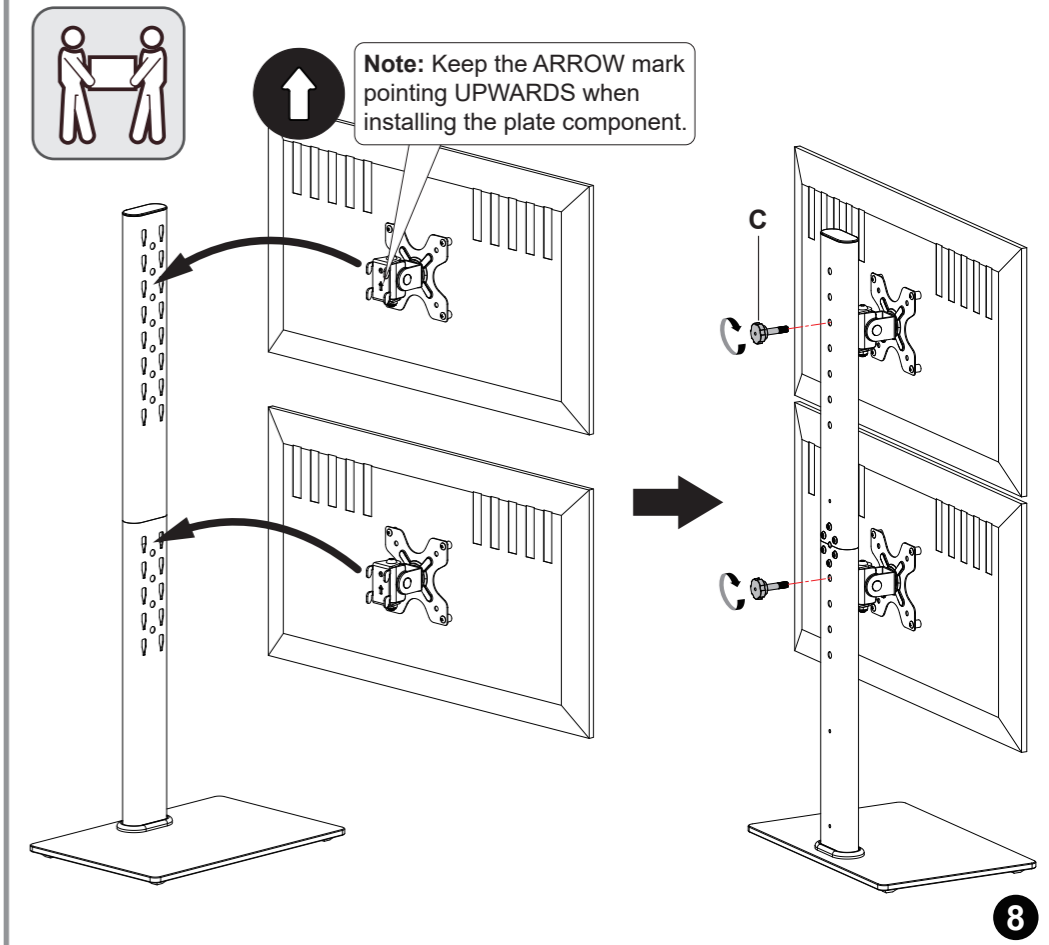
STEP 3: Apply Foot Pads to the Base

Hold the Support Pillar 4 with one hand and tear off plastic film of Foot Pads (F), then attach Foot Pads (F) near four corners of the Base 1 bottom.



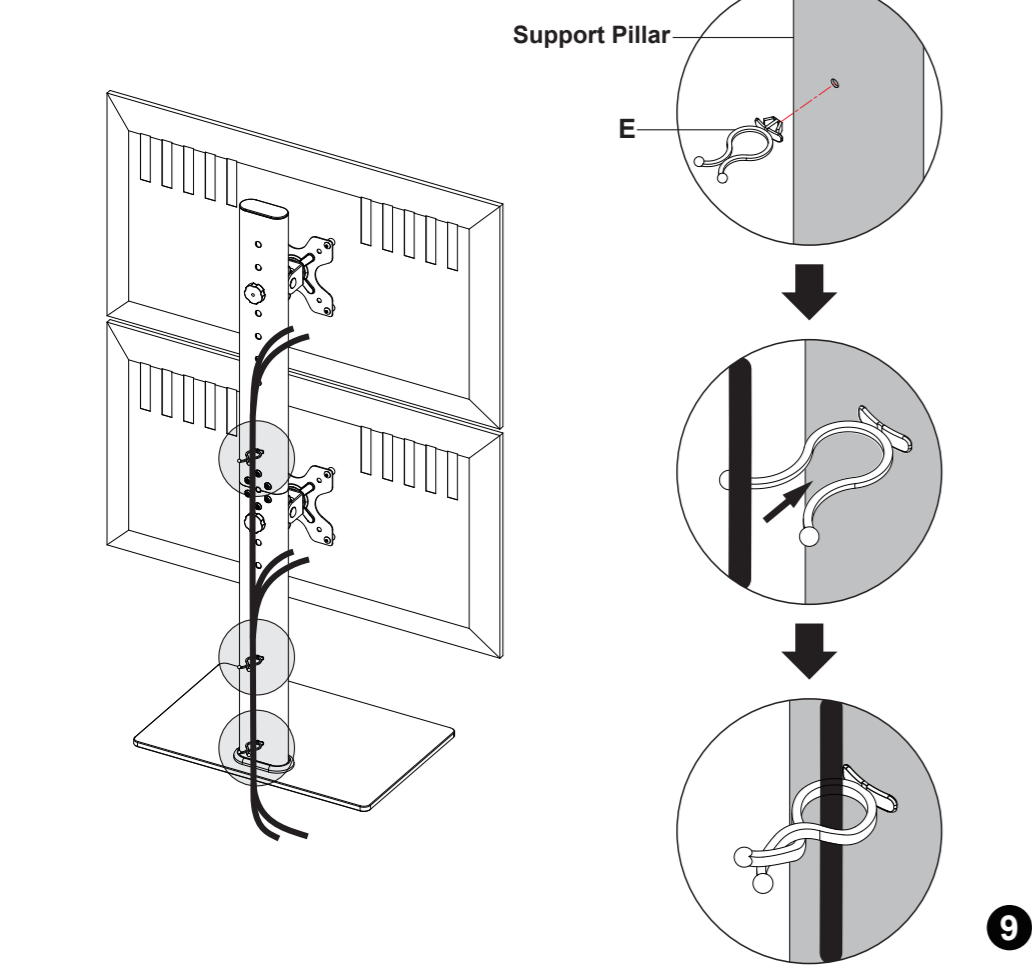
STEP 4: Attach Monitor with Plate Component to Pillar

Turn over the base. Choose the appropriate position for your monitors, hang the monitors onto the Support Pillar, then tighten them with Handle Bolts (C).



STEP 5: Cable Management

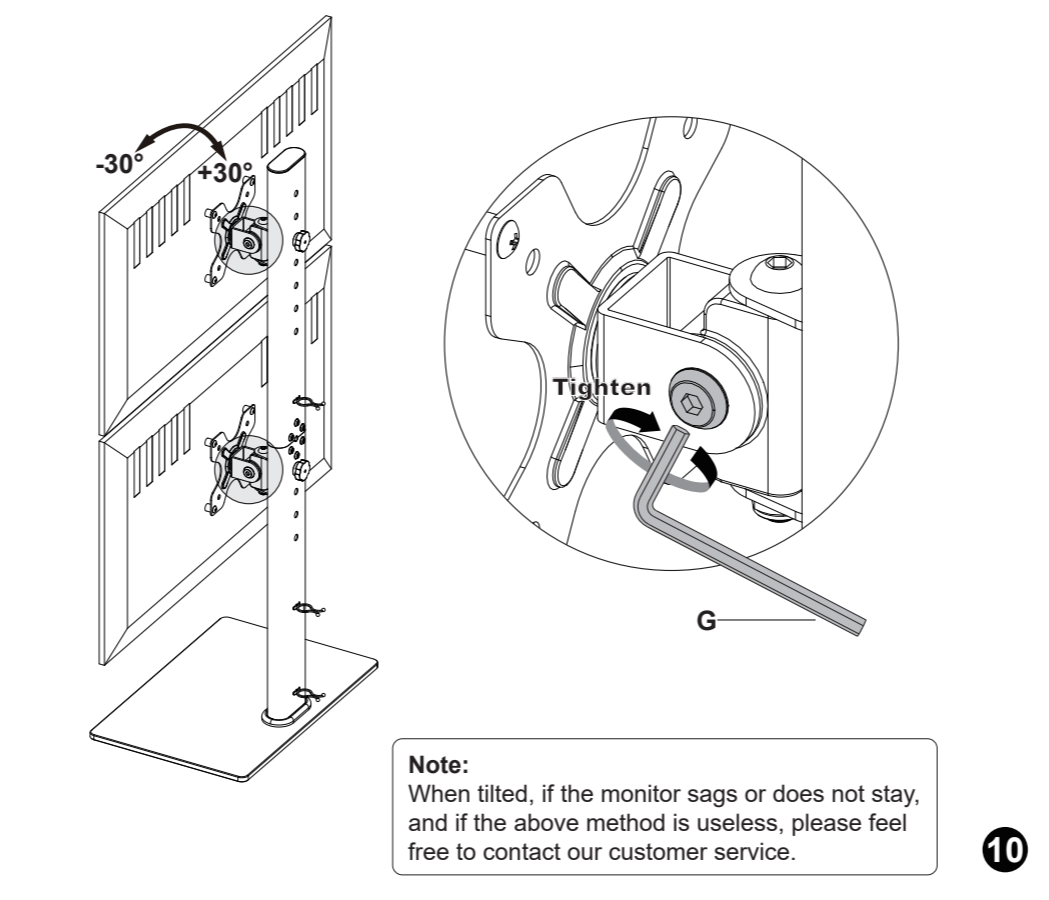
Attach Wire Clips (E) into the holes of Support Pillar. Manage cables with the Wire Clips (E).



STEP 6: Adjustments (If necessary)

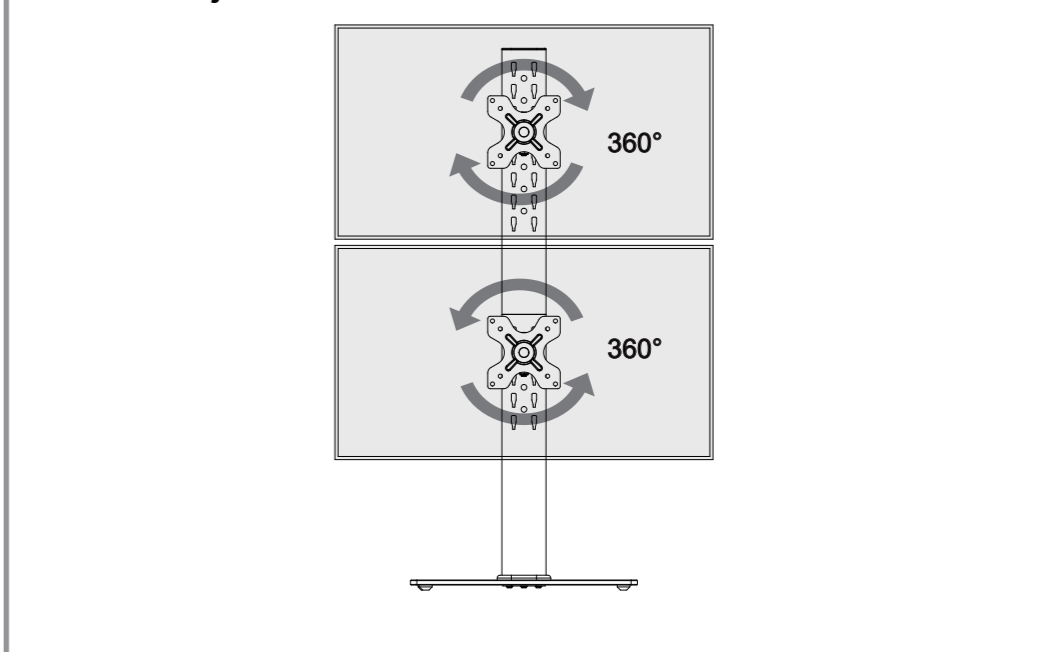
Tilt Adjustment

1. Slightly loosen tilting bolt with the Allen Key(G).
2. Hold the monitor with both hands and adjust monitor to your desired tilt angle.
3. Retighten tilting bolt to secure the monitor in place.



STEP 6: Adjustments (If necessary)

Rotation Adjustment



Swivel Adjustment

