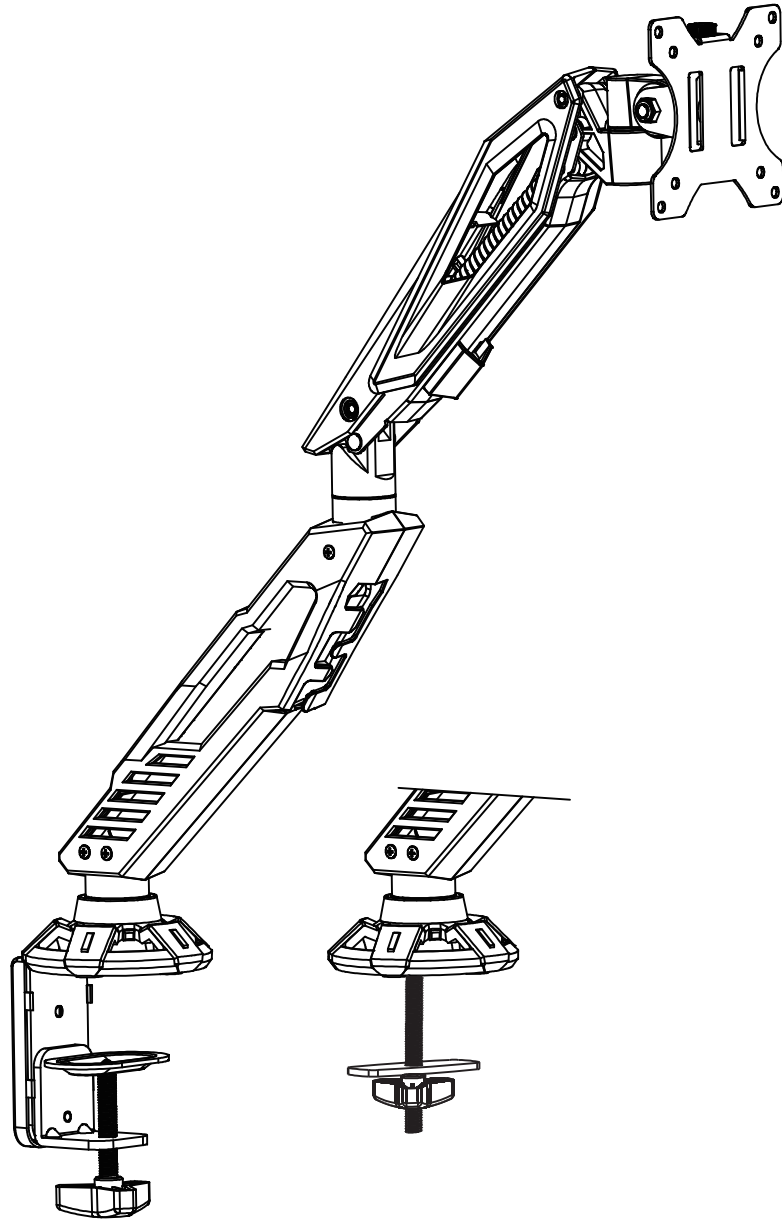


MOUNTUP

Gaming Counterbalance Desk Mount Instruction Manual



MU0027



75x75/100x100



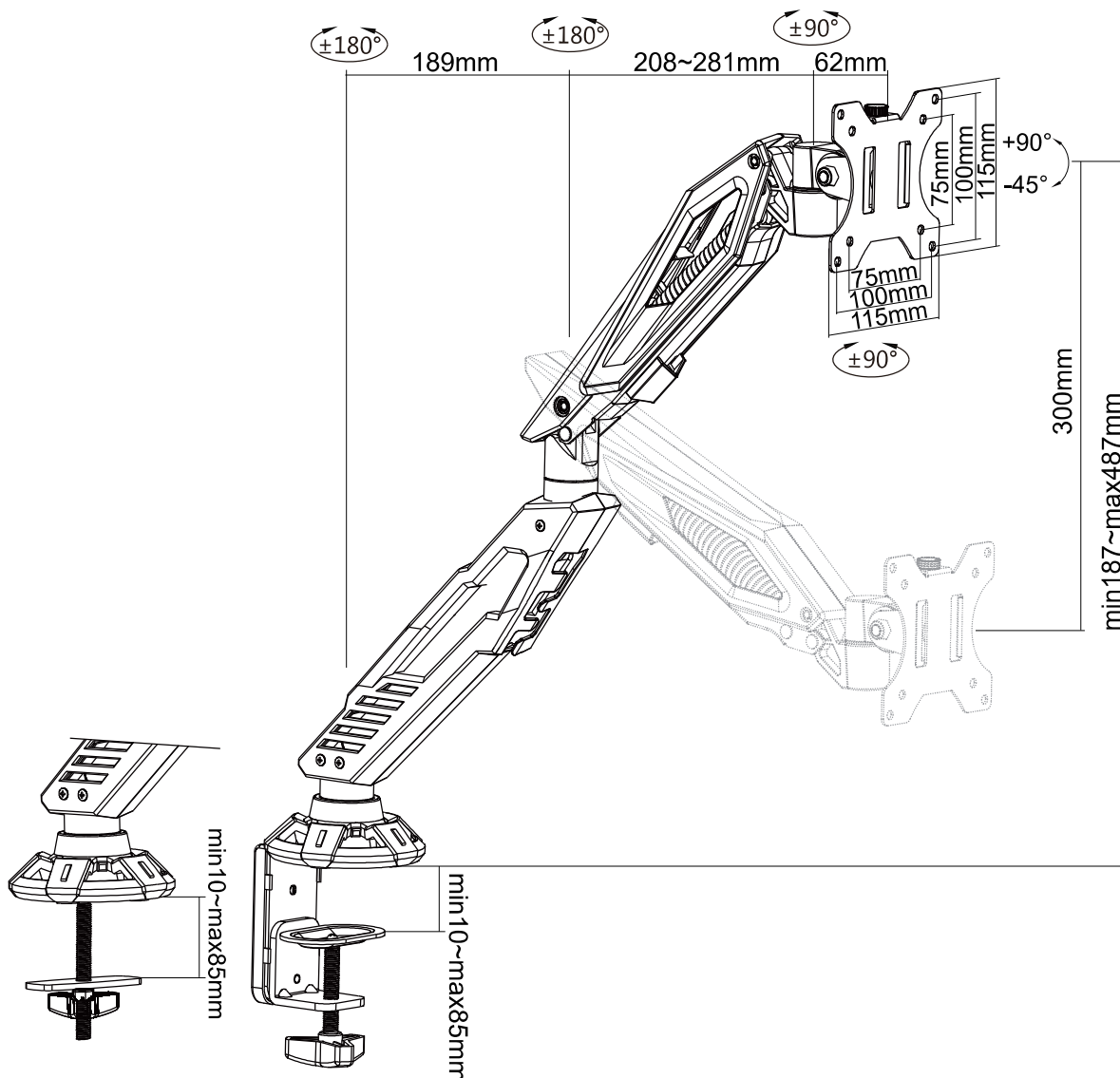
! WARNING!

If you do not understand these instructions or have doubts about the safety of the installation, assembly or use of this product, please contact us.

Before starting assembly, verify all parts are included and undamaged. Improper installation may cause damage or serious injury. Do not use this product for any purpose that is not explicitly specified in this manual. Do not exceed weight capacity. We cannot be liable for damage or injury caused by improper mounting, incorrect assembly or inappropriate use.

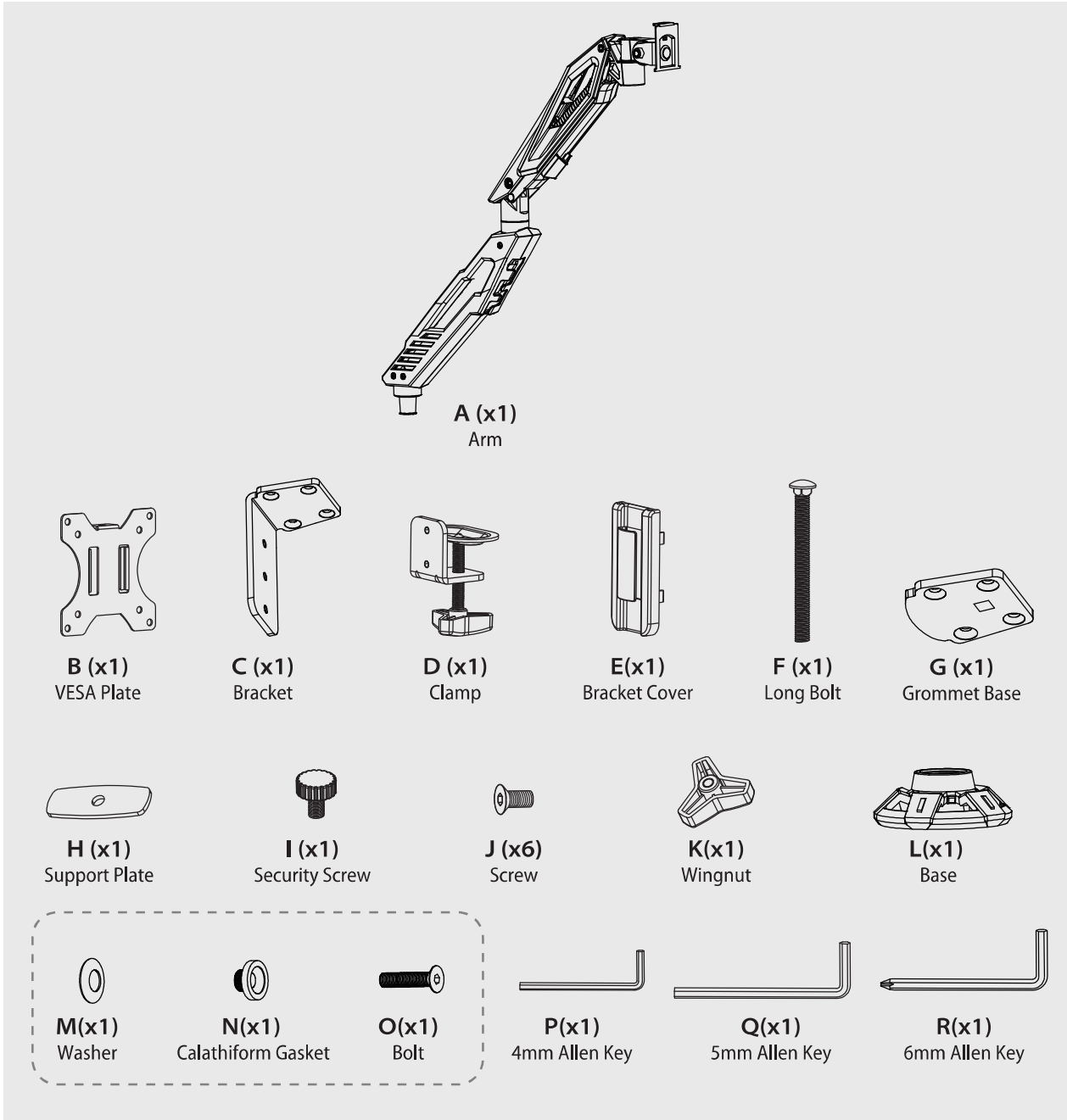
This product contains small items that could be a choking hazard if swallowed. NOT FOR CHILDREN UNDER 3 YEARS. ADULT SUPERVISION IS REQUIRED.

PRODUCT LINE GRAPH



PACKAGE CONTENTS

Components



Hardware

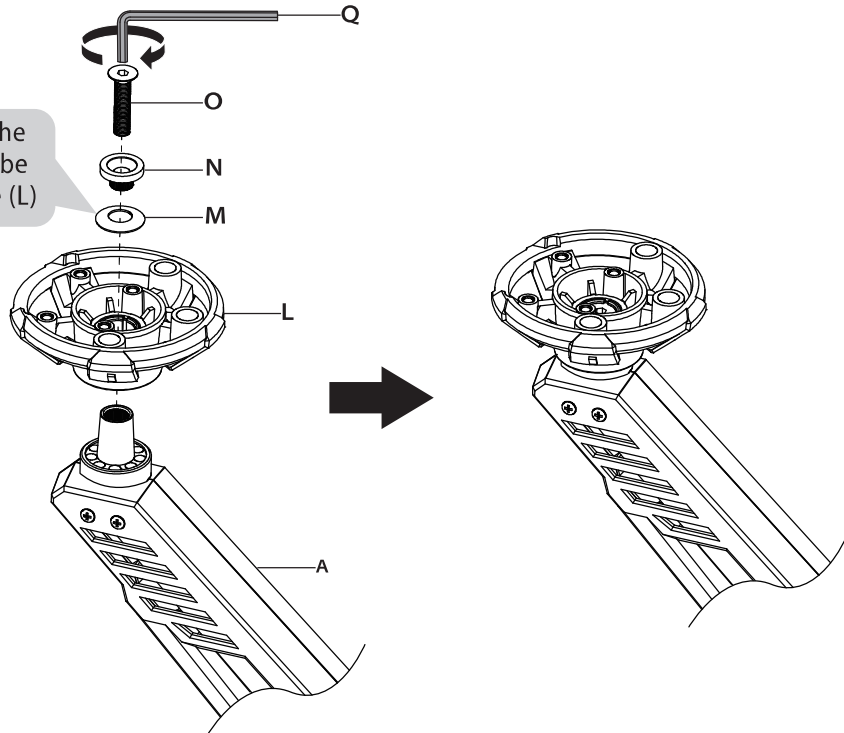


STEP 1 Mount the Base to Bottom of the Arm

Mount the base(L) to the bottom of arm (A) using Washer(M), calathiform gasket(N) and Bolt(O). Tighten (do not over tighten) the Bolt (O) securely with supplied 5mm Allen key (Q).



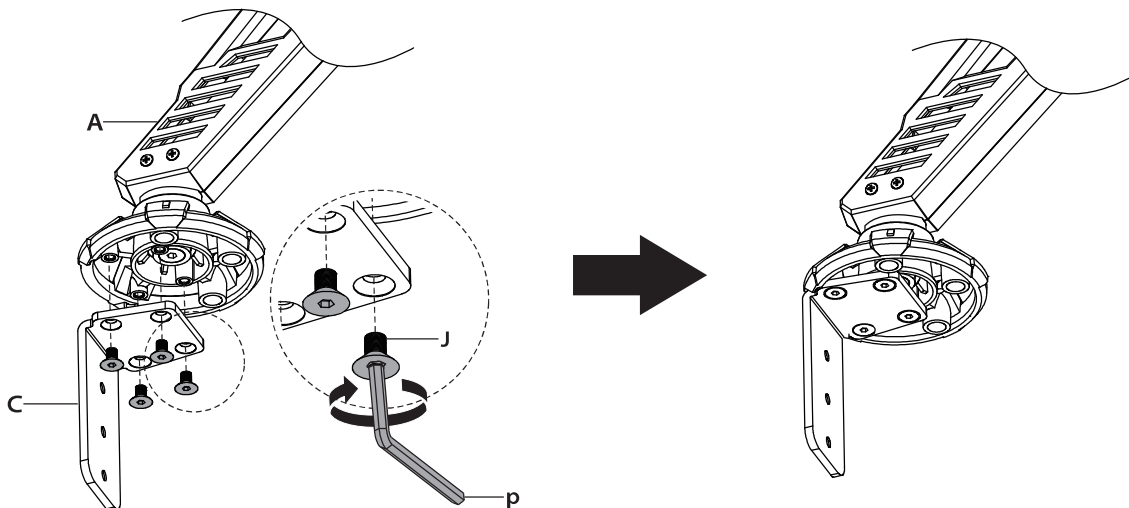
concave side of the washer needs to be faced to the Base (L)



STEP 2 Clamp Installation OR Grommet Base Installation

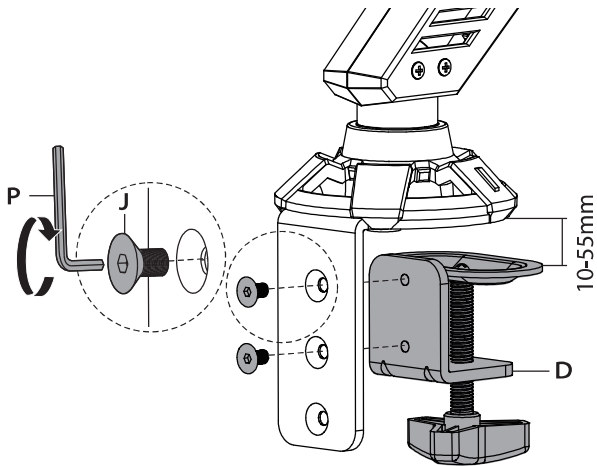
OPTION A: Clamp Installation

Mount bracket (C) to the bottom of arm (A) using screws(J). Tighten the screws with supplied 4mm Allen key (P).



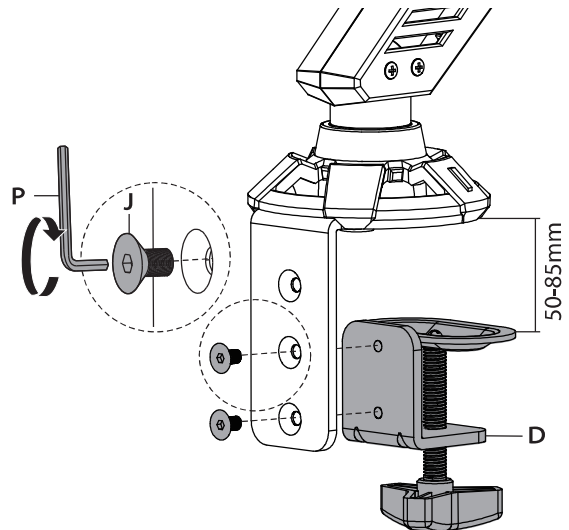
Adjust the Mount to the Desktop Thickness 10-55mm

Secure clamp (D) to upper two holes with bolts (J) using 4mm Allen Key (P) for desks with a thickness of 10-55mm.

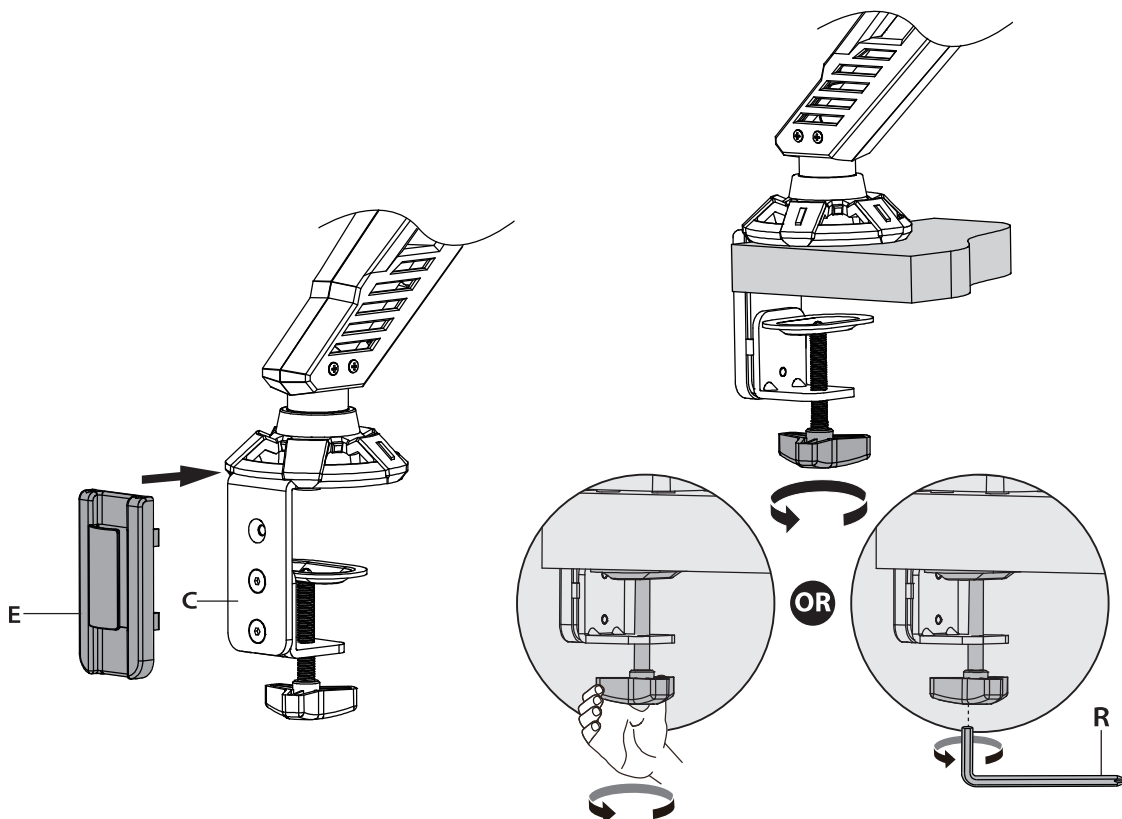


Adjust the Mount to the Desktop Thickness 50-85mm

Secure clamp (D) to lower two holes with bolts (J) using 4mm Allen Key (P) for desks with a thickness of 50-85mm.



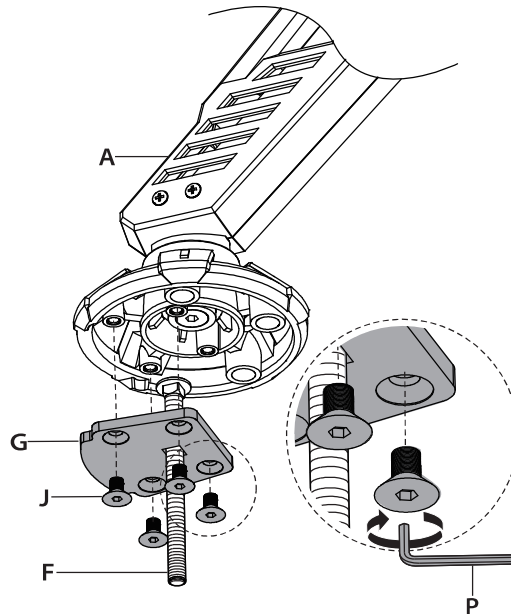
Attach bracket cover (E) to bracket (C). Tighten the clamp to the desktop using the plastic knob or by using 6mm allen key (R).



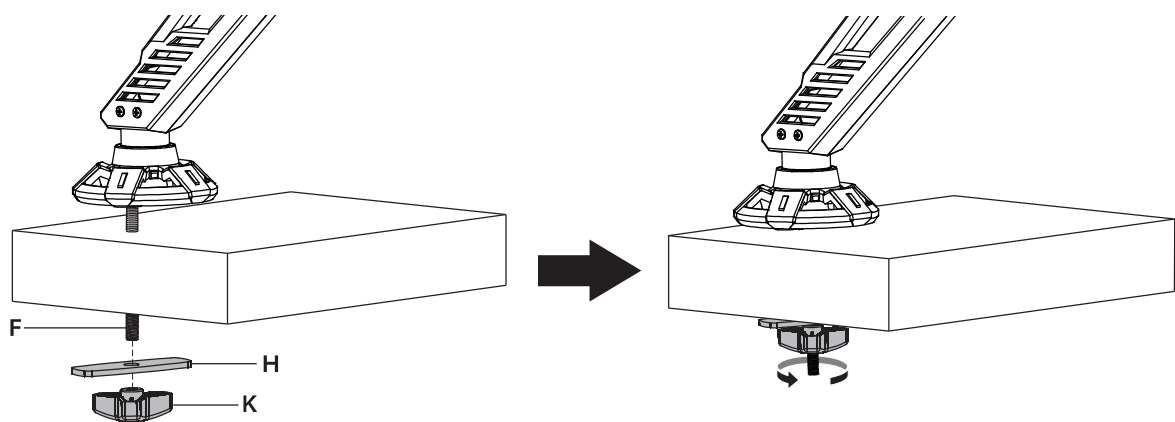
STEP 2 (Continued)

OPTION B: Grommet Base Installation

For grommet hole mounting, place long bolt (F) through the center of grommet base (G). Mount grommet base to the bottom of arm (A) using screws (J). Tighten the screws with supplied 4mm Allen key (P).



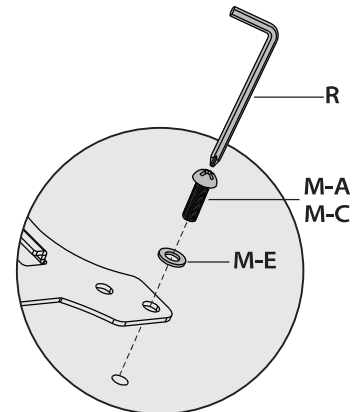
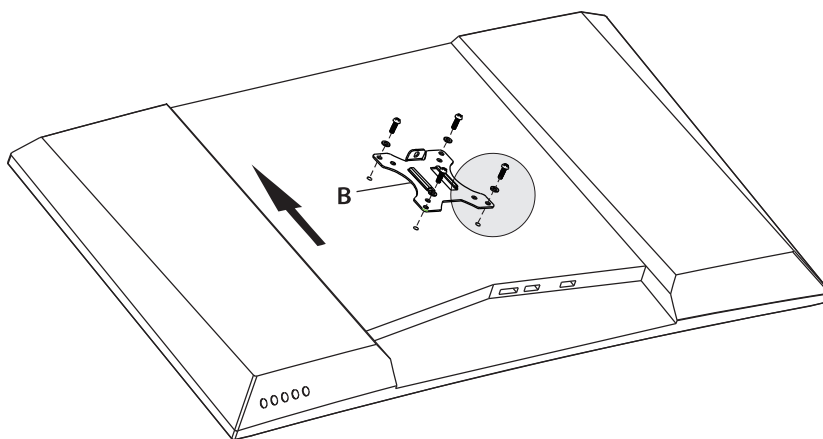
Run long bolt (F) through grommet hole in desktop. Secure it by using the support plate (H) and Wingnut (K). Tighten Wingnut.



STEP 3 Attach the monitor to the arm

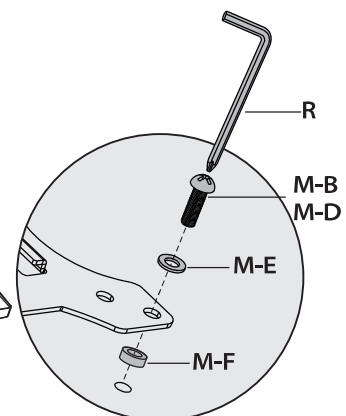
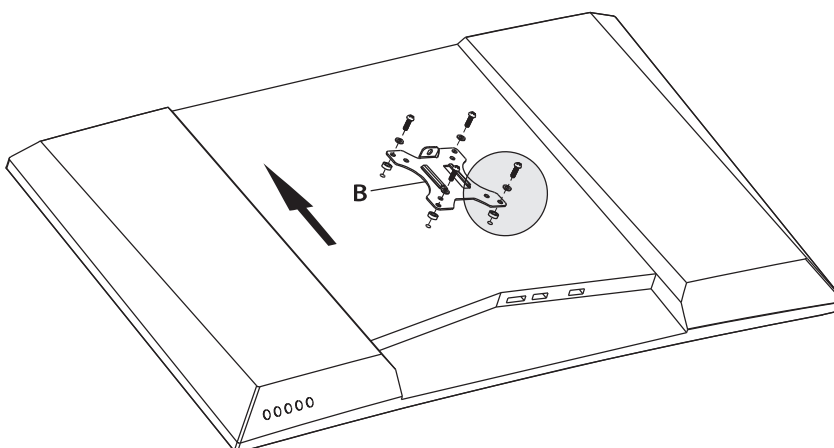
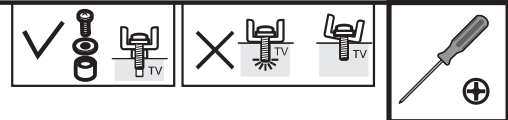
OPTION A: Flat Back Monitor

Attach the VESA plate (B) to back of monitor and secure with screws (M-A) or (M-C) with washers (M-E) using 6mm Allen Key(R). Avoid excessive tightening screws damage the monitor.

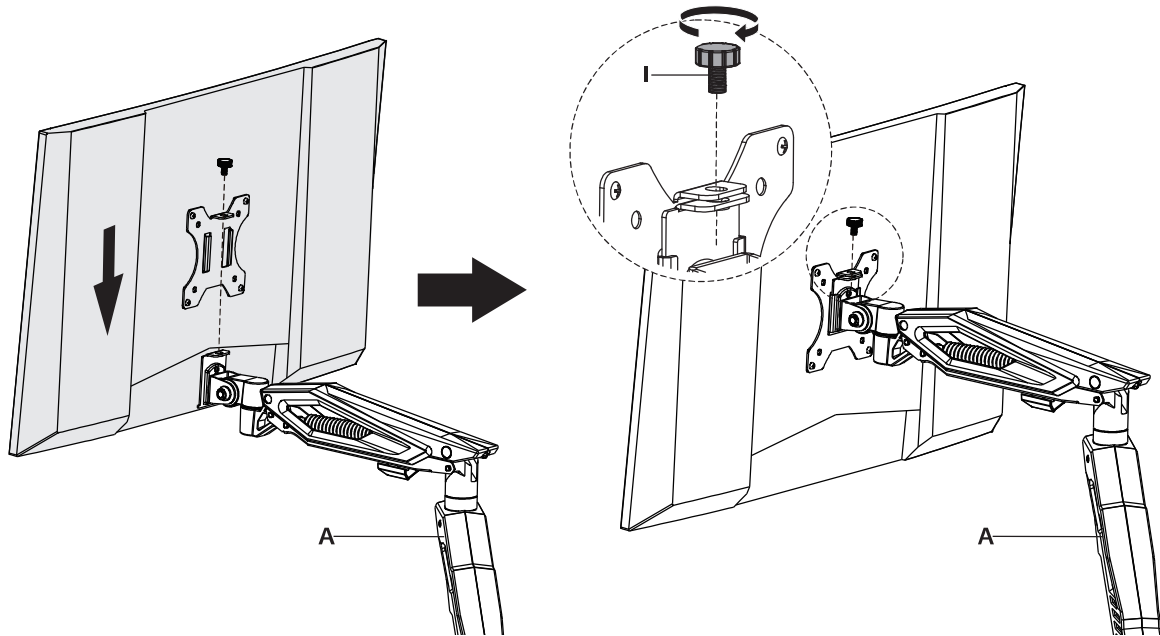


OPTION B: Curved Back Monitor

Attach the VESA plate (B) to back of monitor and secure with screws (M-B) or ((M-D) with washers (M-E) and spacers (M-F) using 6mm Allen Key(R). Avoid excessive tightening screws damage the monitor.

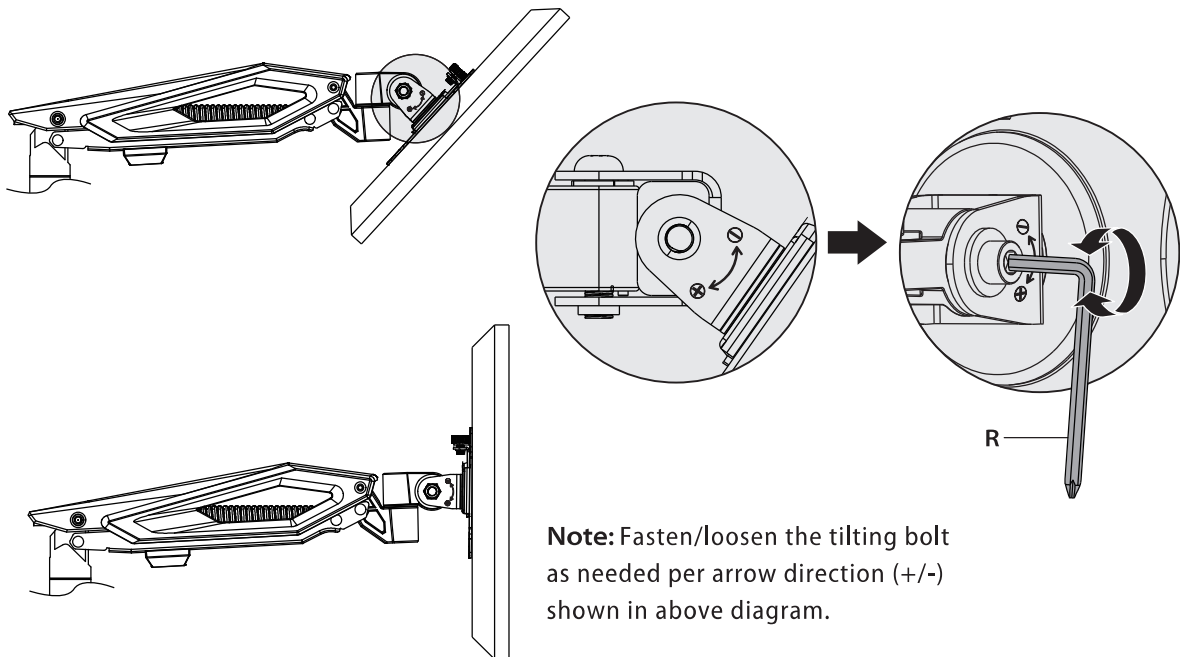


Slide the monitor onto the head of swivel arm(A), install the security screw (I). Make sure the security screw is installed before you rotate the monitor.



Refer to below illustrations to adjust tilting angle of your monitor.

If the monitor sags or does not stay, please fasten the tilting bolt on the mount until the monitor can be held at any angle as needed. Refer to below illustrations to adjust tilting angle of your monitor.



Note: Fasten/loosen the tilting bolt as needed per arrow direction (+/-) shown in above diagram.

STEP 4 Adjust the tension

For proper functioning of this mount, depending on different weight of monitor you might need to adjust tension spring in Arm (A) by using 6 mm Allen key (R).



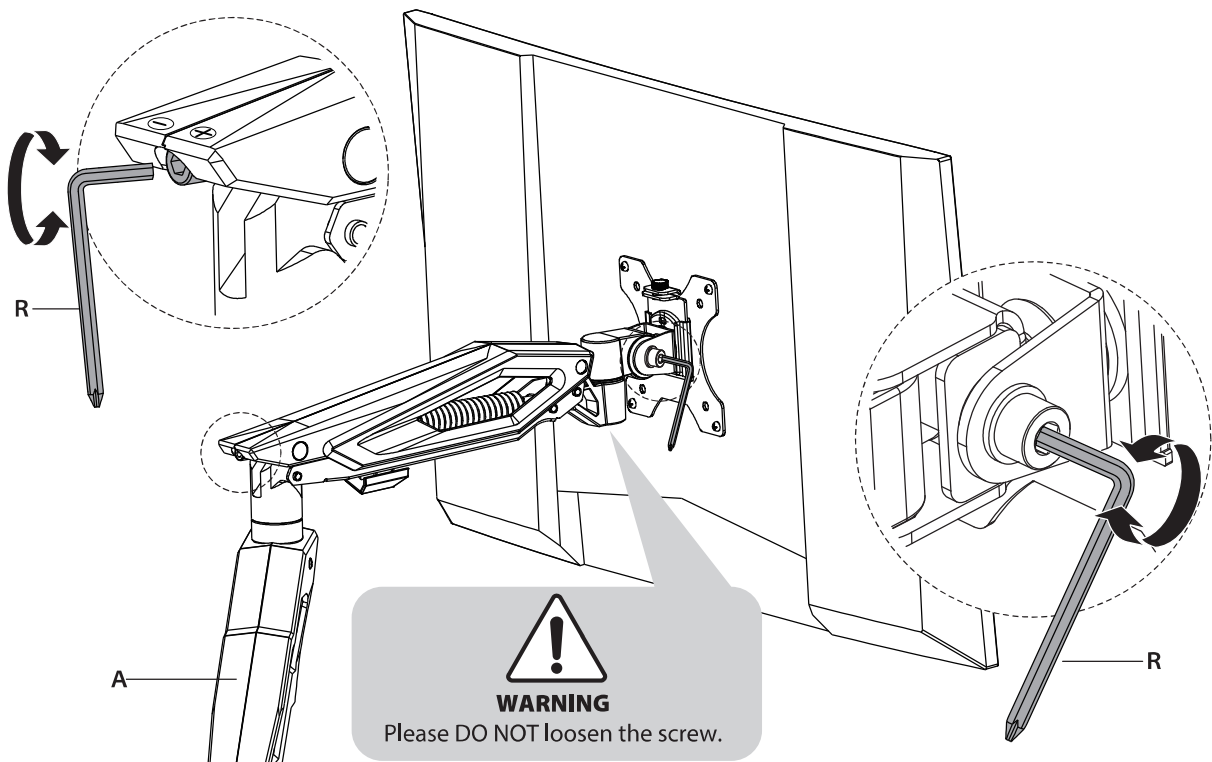
After being attached to the arm, the monitor falls down and can not stay at the desired height by itself. Turn clockwise ("+" direction) to increase tension until the monitor can stay at the desired Height by itself.



After being attached to the arm, the monitor rises up and can not stay at the desired height by itself. Turn counter-clockwise ("- direction) to reduce tension until the monitor can stay at the desired Height by itself.

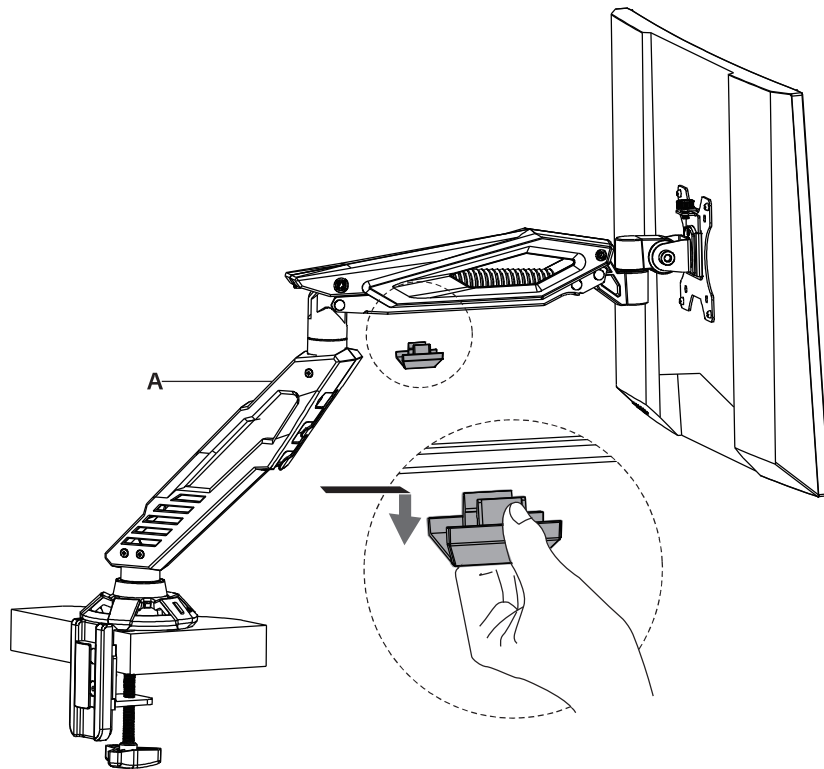
Note:

It is normal for a bit noise when you adjust the spring tension.

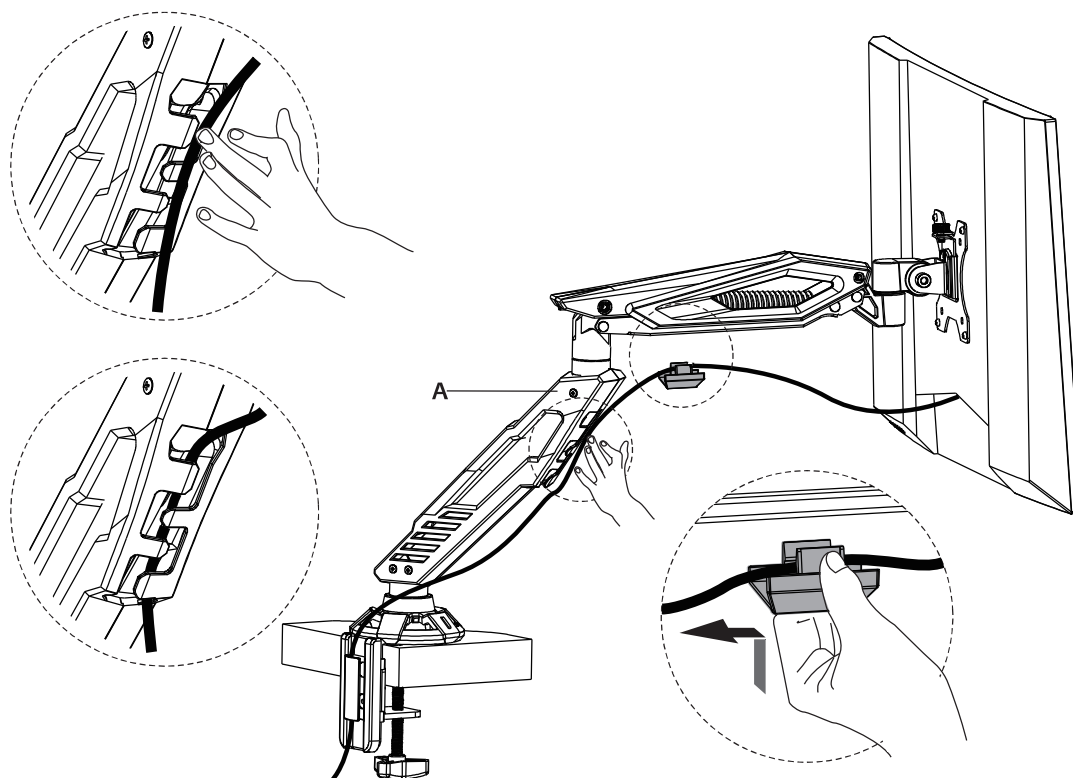


STEP 5 Cable Management

Remove the bottom plastic covers from spring arm(A) as shown in diagram.

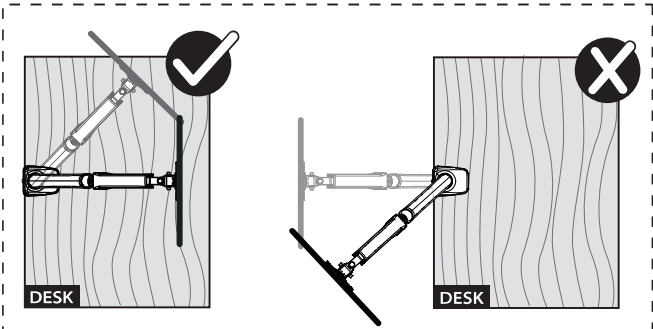
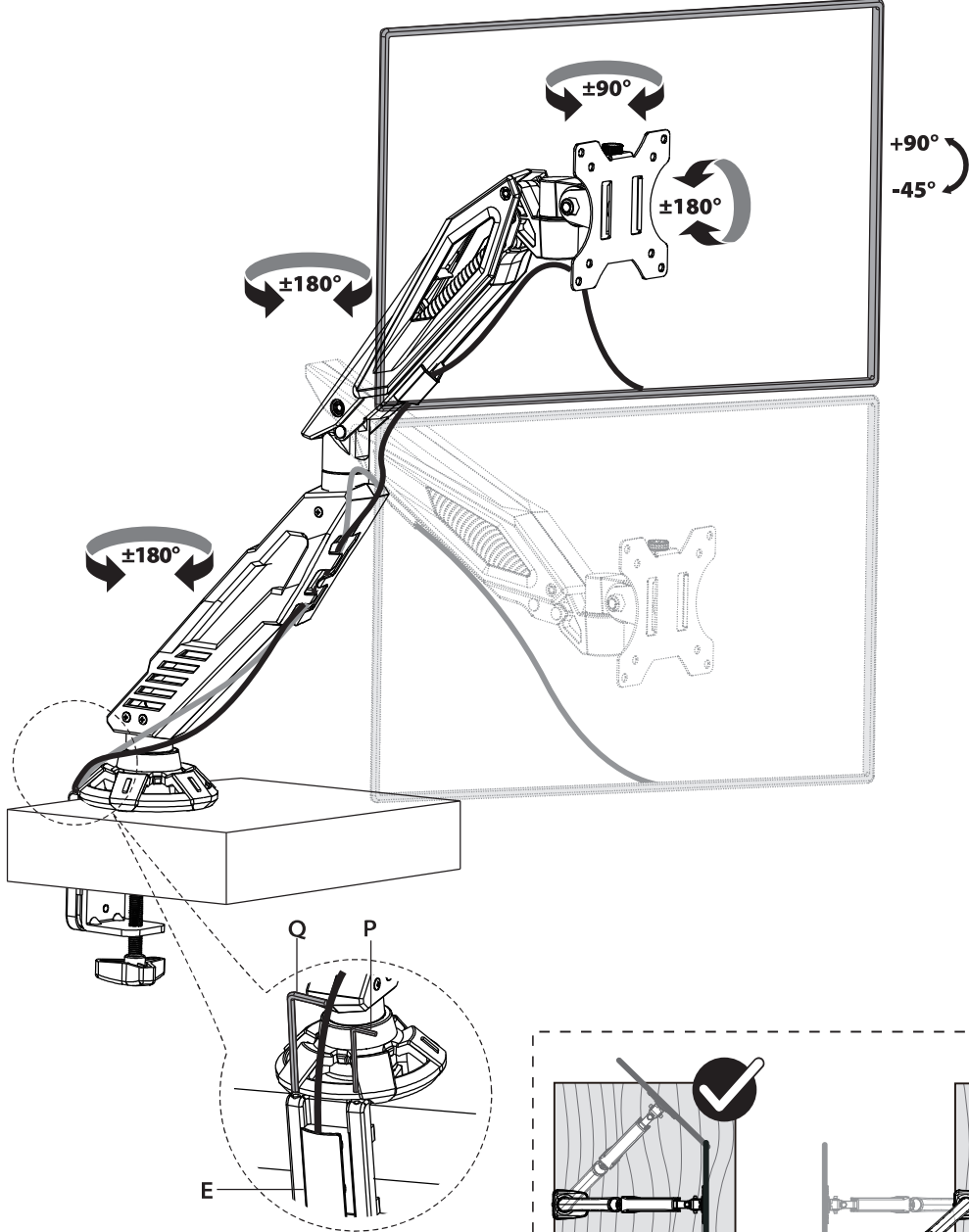


Run cables from monitor through the bottom of spring arm (A). Reattach plastic covers as shown in diagram.



Adjust as Desired

Allen Key(P,Q) can be stored in Base Support Cover(E) for next time using.



Pay attention while clamp install !



CAUTION AND MAINTENANCE:

- Never allow children to climb, stand, hang, or play on any part of monitor or stand.
- This product is intended for indoor use only. Using this product outdoors could lead to product failure and personal injury.
- Check that the bracket is secure and safe to use at regular intervals (at least every three months).

MOUNTUP

If you have any questions, please contact us.