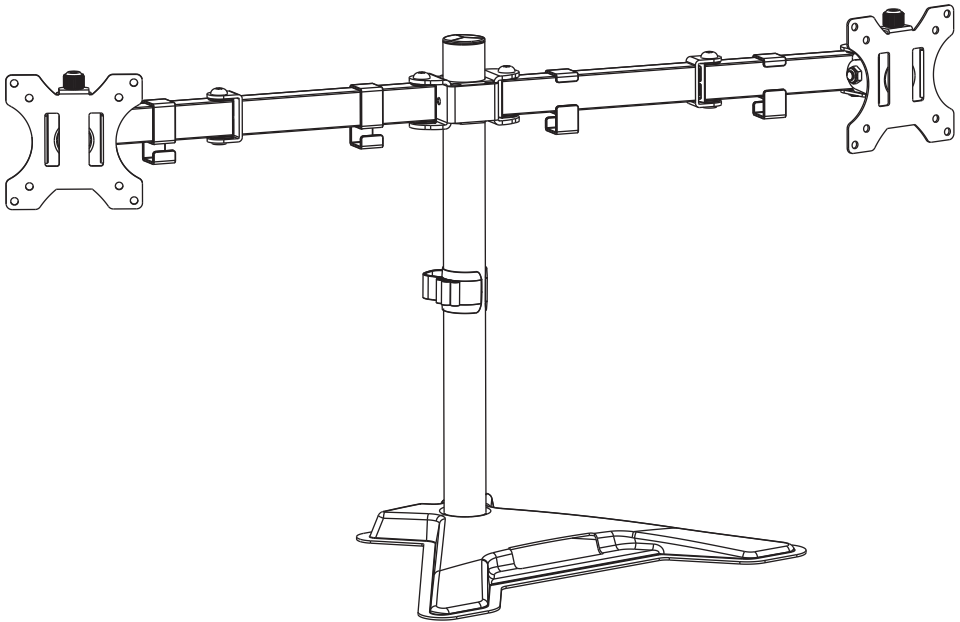


MOUNTUP

Free Standing Dual Monitor Stand Instruction Manual



MU1002

75x75
100x100

27"

(8kg/17.6lbs)x2

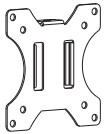
WARNING!

If you do not understand these instructions or have doubts about the safety of the installation, assembly or use of this product, please contact us.

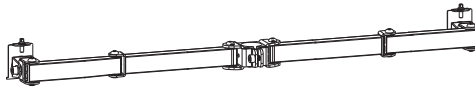
Before starting assembly, verify all parts are included and undamaged. Improper installation may cause damage or serious injury. Do not use this product for any purpose that is not explicitly specified in this manual. Do not exceed weight capacity. We cannot be liable for damage or injury caused by improper mounting, incorrect assembly or inappropriate use.

This product contains small items that could be a choking hazard if swallowed. NOT FOR CHILDREN UNDER 3 YEARS. ADULT SUPERVISION IS REQUIRED.

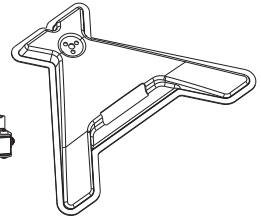
PACKAGE CONTENTS



A (x2)
VESA Plate



B (x1)
Swivel Arm



C (x1)
Base



D (x1)
Pole



E (x1)
wire clip



F (x3)
Screw



G (x4)
Wire clip



H (x2)
Plastic Cover



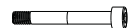
I (x2)
Bolt



J (x1)
4mm Allen Key



K (x1)
6mm Allen Key



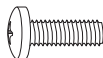
L (x2)
Long Screw



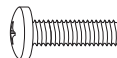
M-A (x8)
M4x12



M-B (x8)
M4x16



M-C (x8)
M6x12



M-D (x8)
M6x16



M-E (x8)
D6 Washer



M-F (x8)
Spacer

NOTE: Not all hardware included will be used.

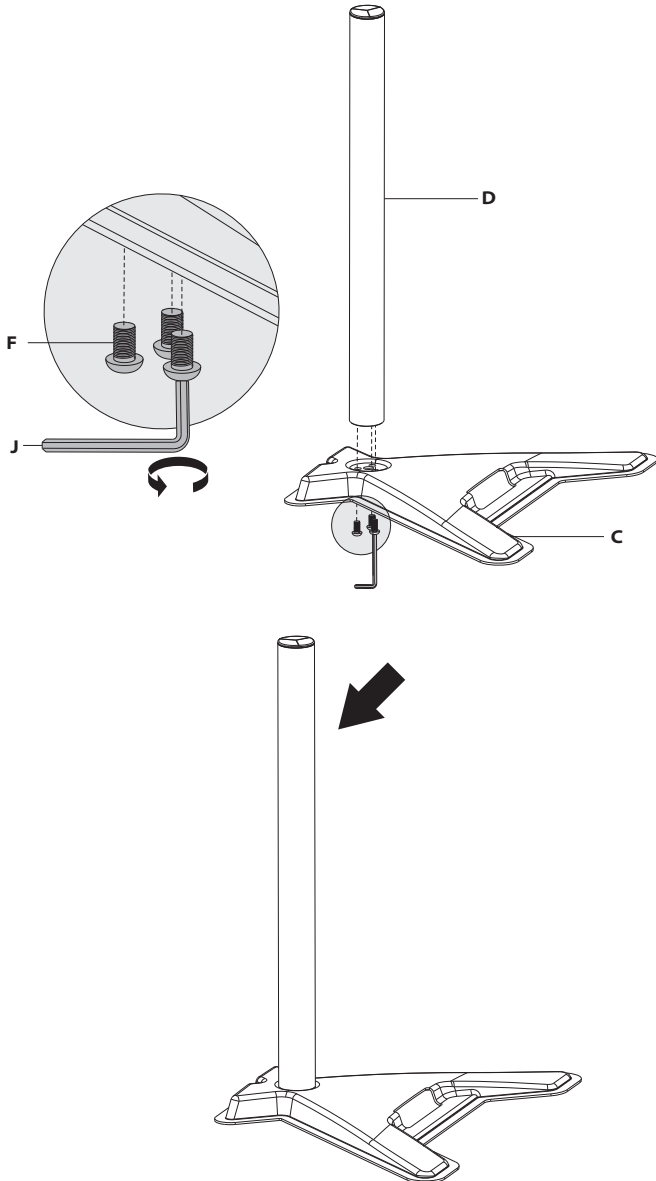


DO NOT EXCEED WEIGHT CAPACITY.

ASSEMBLY STEPS

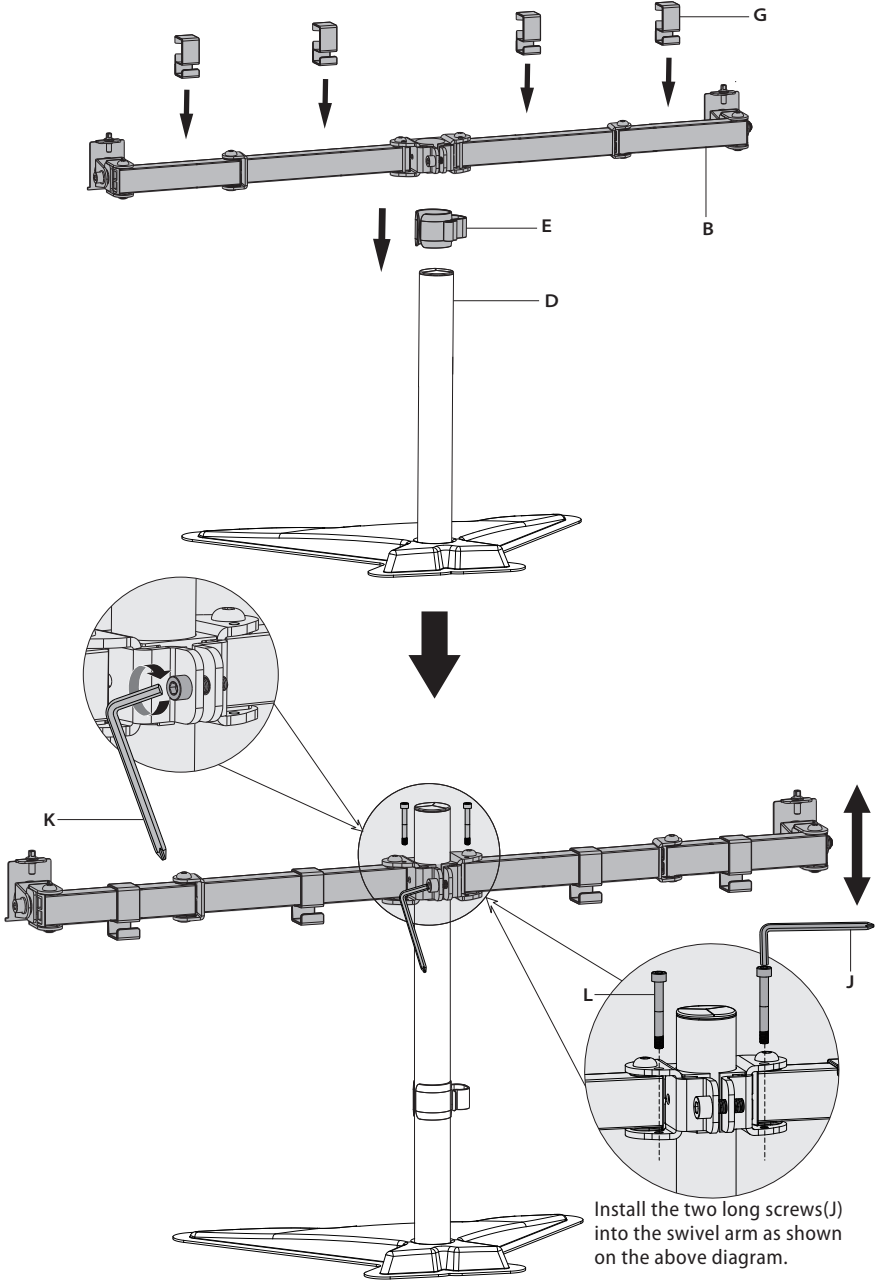
STEP 1: Pole Installation

Use the 4mm Allen Key (J) to tighten the screws (F) into the pole (D) from the bottom of the base (C).



STEP 2: Arm Installation

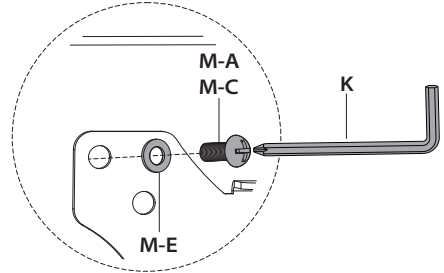
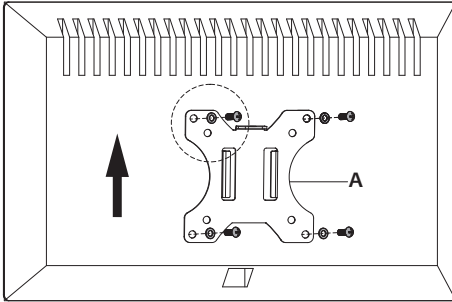
Install wire clip (E) and swivel arm (B) to the pole (D). Fasten the bolt with supplied 6mm Allen key (K). Attached the wire clips (G) to the swivel arm (B).



STEP 3: Attach Monitor

OPTION A: Flat Back Monitor

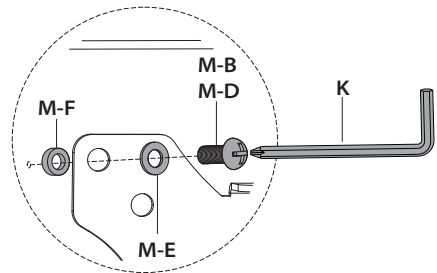
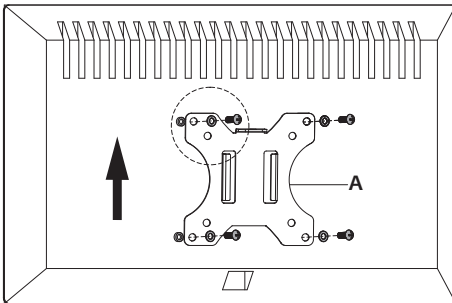
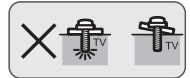
For flat back monitor, secure VESA plate (A) to monitor using screws (M-A or M-C) and washers (M-E).



CAUTION: To select the correct bolts (M-A or M-C) for your monitor, you can try to screw it on your monitor by hand. The one can screw inside is the correct bolt for your monitor.

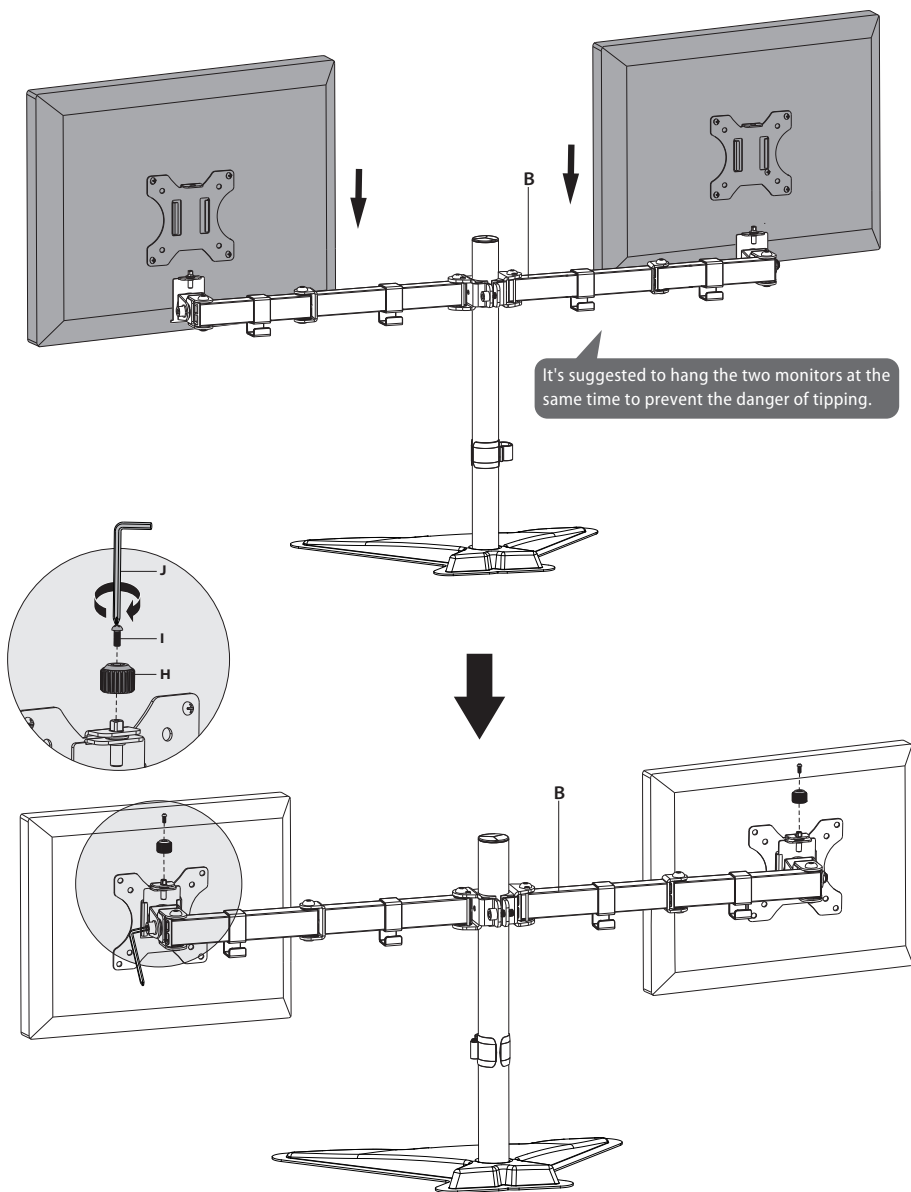
OPTION B: Curved Back Monitor

For monitor with curved or recessed back, align spacers (M-F) with mounting holes in monitor, and secure VESA plate (A) to monitor using screws (M-B or M-D) and washers (M-E).



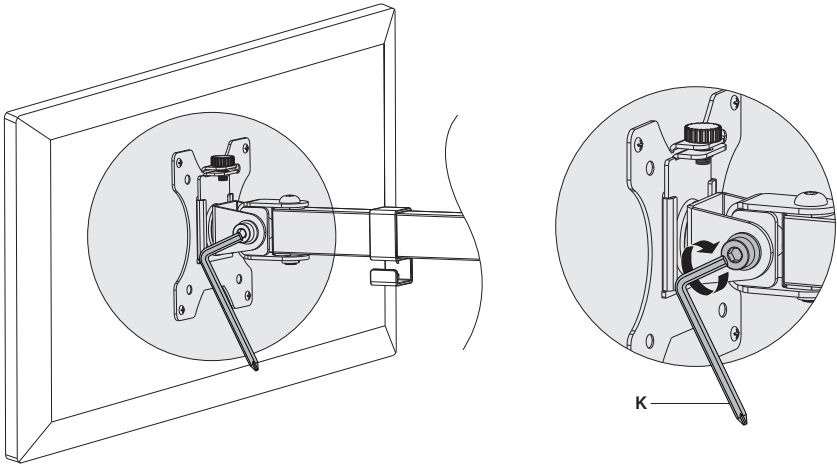
STEP 4: Hang Monitor

Slide the monitor onto the head of swivel arm (B). Install the plastic cover (H) and security bolt (I). Tighten the bolt with the supplied 4mm Allen key (J). Make sure the security bolt (I) is installed before you rotate the monitor.

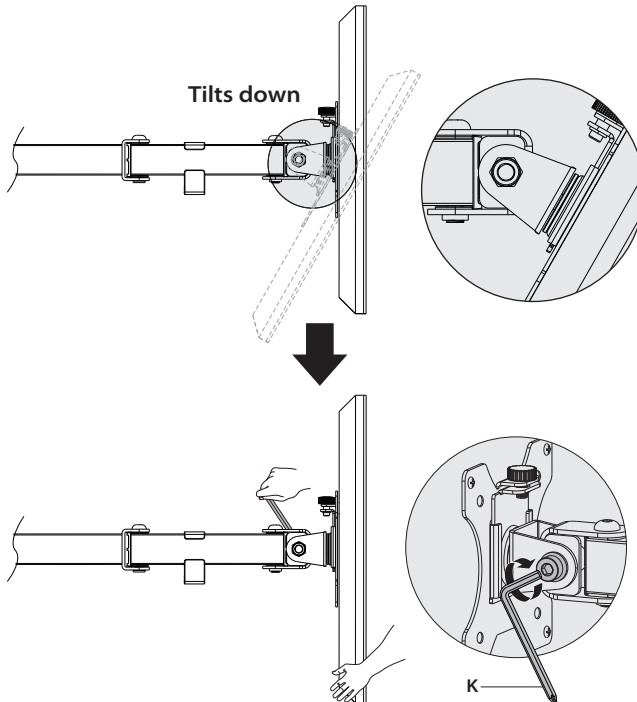


STEP 5: Tilt Adjustment

Tighten the bolt with the supplied 6mm Allen key (K) to fix the tilt angle.



Refer to below illustrations to adjust tilting angle of your monitor.

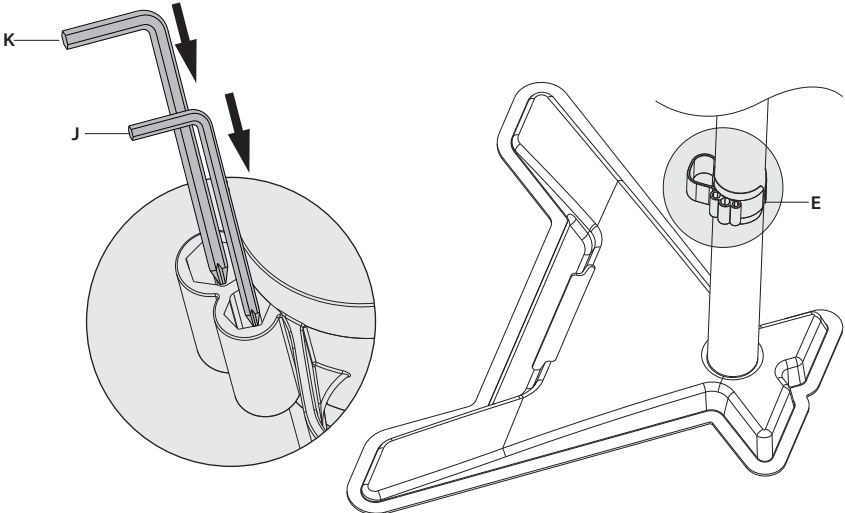
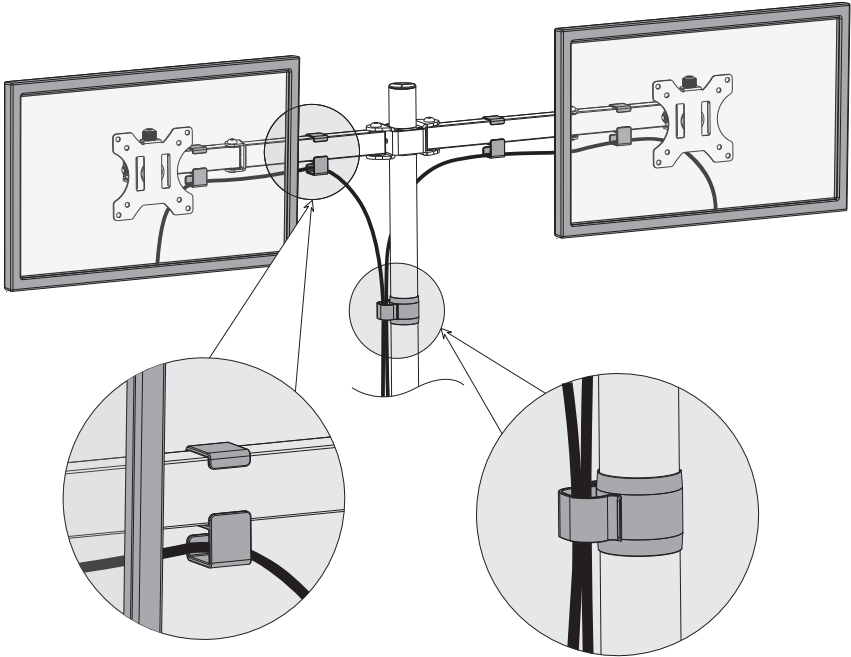


Note:

1. Loosen the tilting bolt.
2. Adjust monitor to your desired tilting angle.
3. Retighten the tilting bolt to fix the tilting angle.

STEP 6: Cable Management

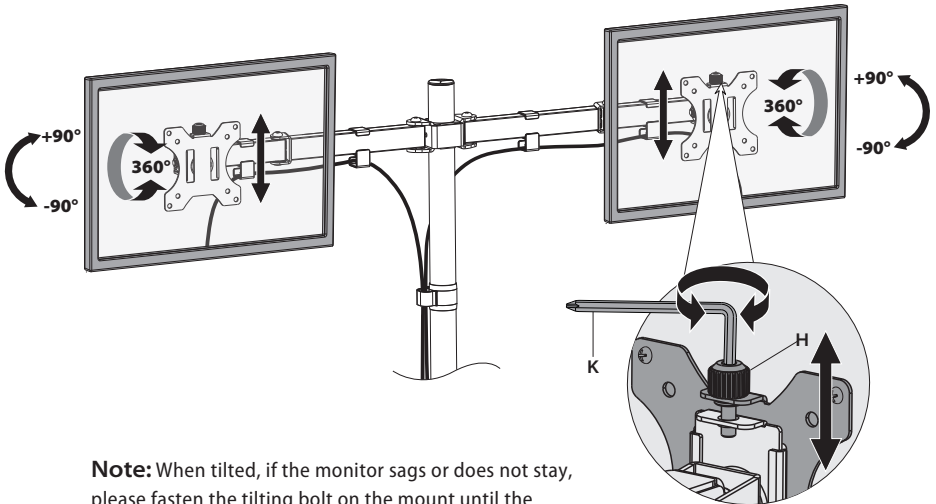
Manage cables and store Allen keys (J,K) in wire clip (E) for future use.



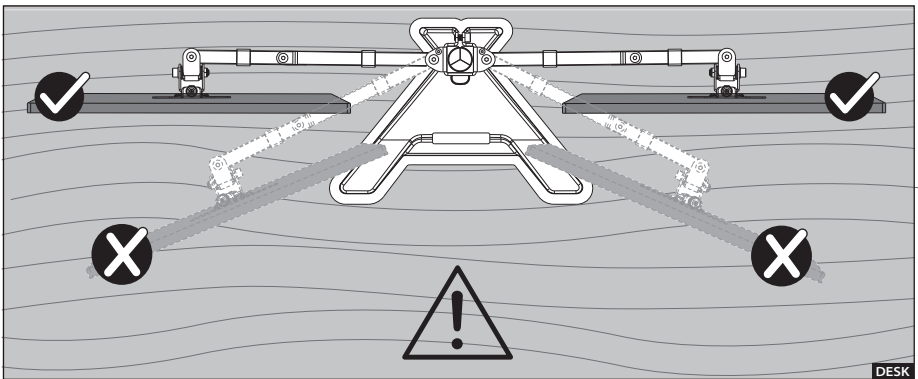
Adjust as Desired

Adjust monitor position and rotation.

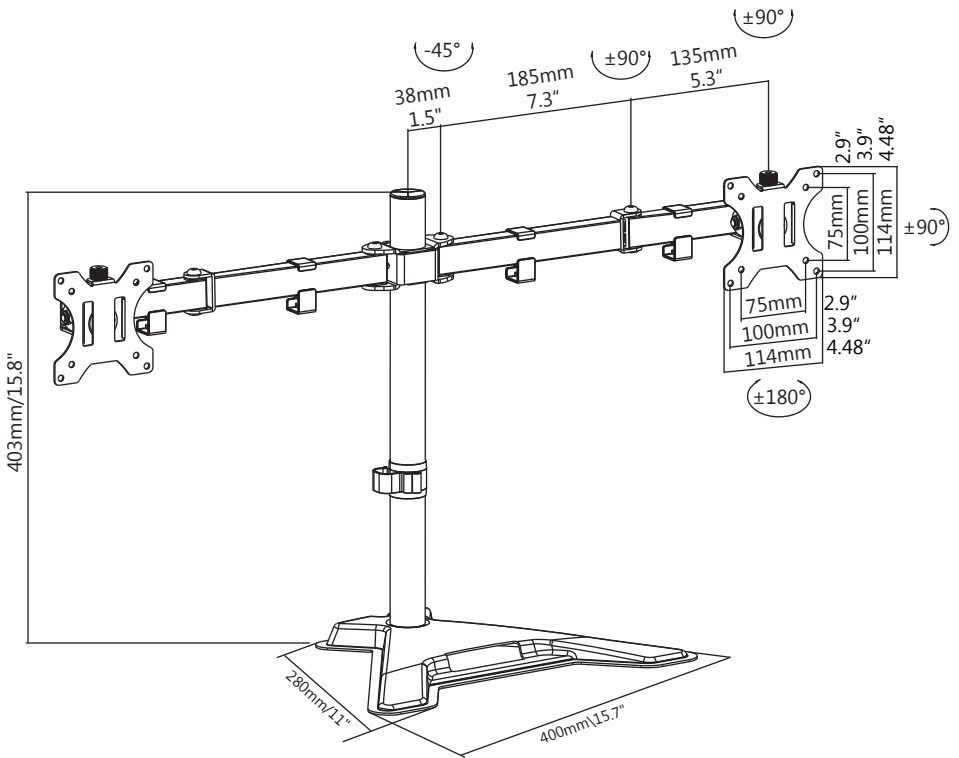
For minor height adjustment, turn the plastic cover (H) with the supplied 6mm Allen Key (K) to raise or lower the monitor. Ignore this step if the two monitors are level.



Note: When tilted, if the monitor sags or does not stay, please fasten the tilting bolt on the mount until the monitor can be held at any angle as needed.



Product Dimensions





CAUTION AND MAINTENANCE:

- Never allow children to climb, stand, hang, or play on any part of monitor or stand.
- This product is intended for indoor use only. Using this product outdoors could lead to product failure and personal injury.
- Check that the bracket is secure and safe to use at regular intervals (at least every three months).

MOUNTUP

If you have any questions, please contact us.