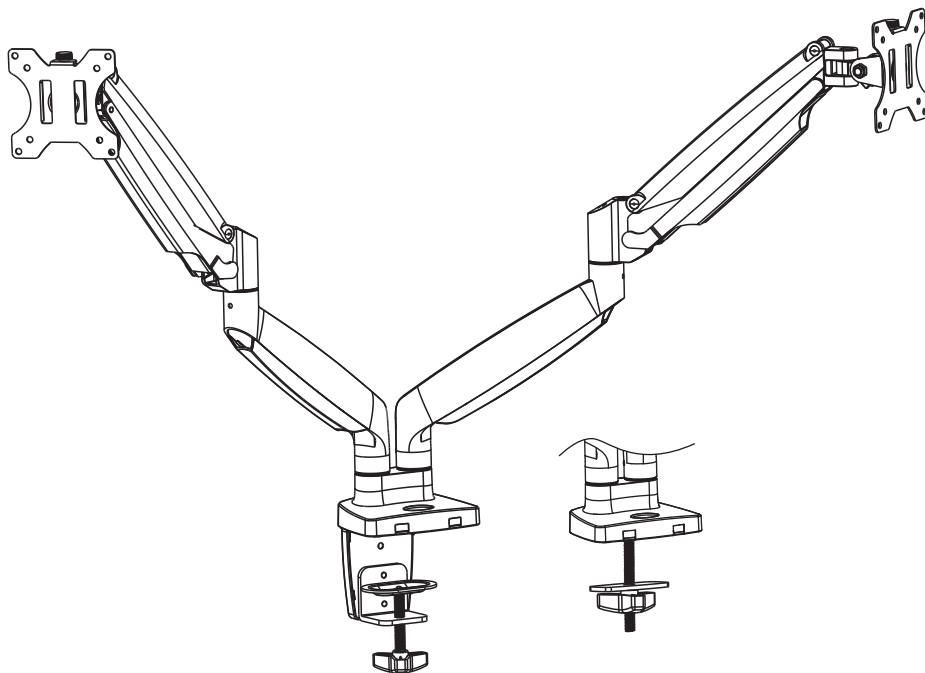


# MOUNTUP

---

## Premium Dual Monitor Stand

### Instruction Manual



**MU0033**

75x75  
100x100

35"

(3~14kg)x2  
(6.6~30.9lbs)x2

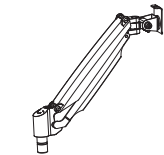
# **WARNING!**

If you do not understand these instructions or have doubts about the safety of the installation, assembly or use of this product, please contact us.

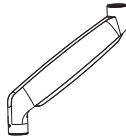
Before starting assembly, verify all parts are included and undamaged. Improper installation may cause damage or serious injury. Do not use this product for any purpose that is not explicitly specified in this manual. Do not exceed weight capacity. We cannot be liable for damage or injury caused by improper mounting, incorrect assembly or inappropriate use.

This product contains small items that could be a choking hazard if swallowed. NOT FOR CHILDREN UNDER 3 YEARS. ADULT SUPERVISION IS REQUIRED.

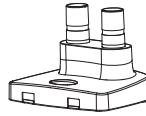
## PACKAGE CONTENTS



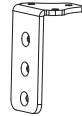
**A (x2)**  
Upper Arm



**B (x2)**  
Lower Arm



**C (x1)**  
Base



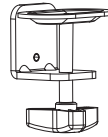
**D (x1)**  
Bracket



**E (x1)**  
Base Support Cover



**F (x2)**  
VESAs Plate



**G (x1)**  
Clamp



**H (x1)**  
Carriage Bolt



**I (x1)**  
Grommet Base



**J (x1)**  
Support Plate



**K (x1)**  
Wingnut



**L (x5)**  
M6x10



**M (x4)**  
Pad



**N (x2)**  
Bolt



**O (x1)**  
3mm Allen Key



**P (x1)**  
4mm Allen Key



**Q (x1)**  
6mm Allen Key



**M-A (x8)**  
M4x12



**M-B (x8)**  
M4x16



**M-C (x8)**  
M6x12



**M-D (x8)**  
M6x16



**M-E (x8)**  
D6 Washer



**M-F (x8)**  
Spacer

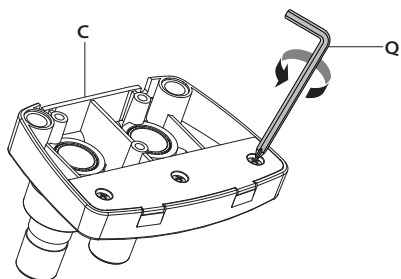
**NOTE:** Not all hardware included will be used.



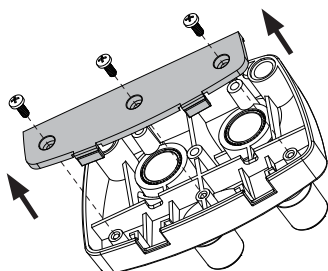
**DO NOT EXCEED WEIGHT CAPACITY.**

If there is a need, please mount the USB based on following steps.

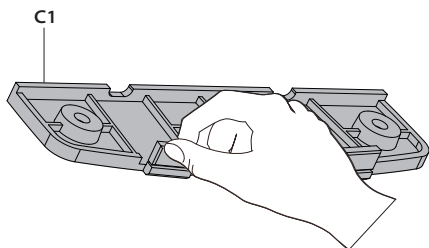
1



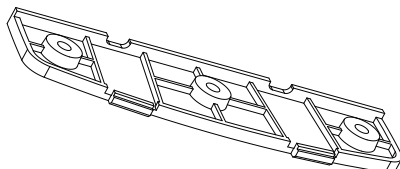
2



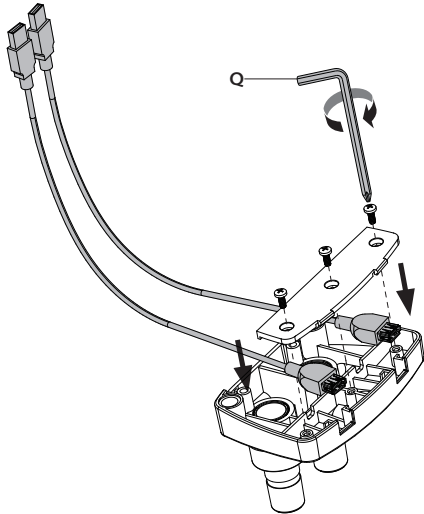
3



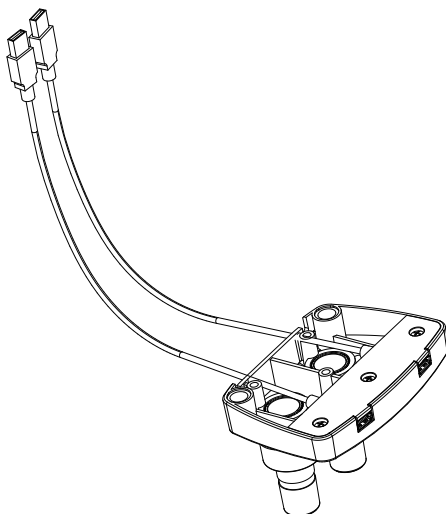
4



5



6

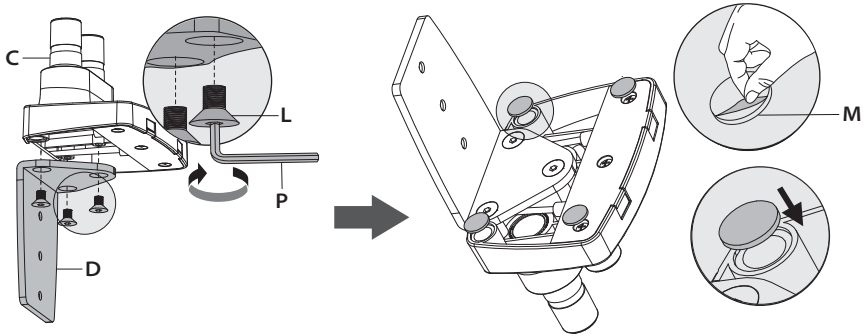


# ASSEMBLY STEPS

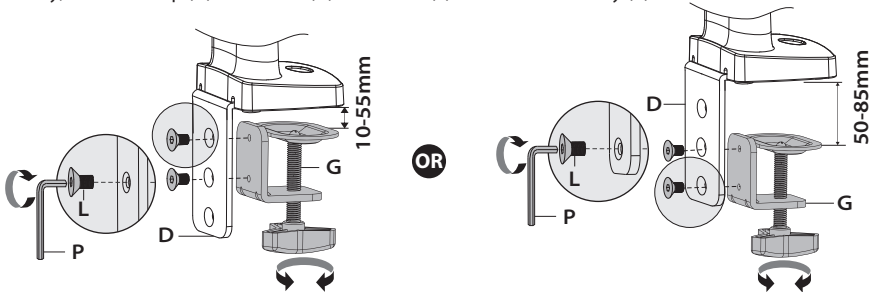
## STEP 1: Clamp Installation OR Grommet Base Installation

### OPTION A: Clamp Installation

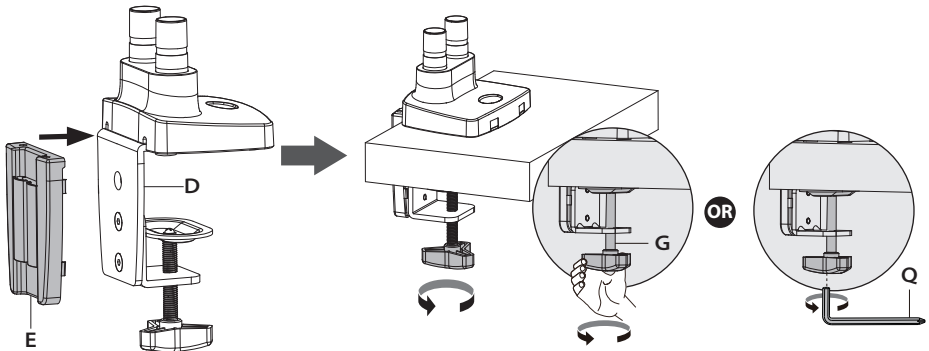
Mount Bracket (D) to Base (C) with Bolts (L). Bolts could be tightened by the 4mm Allen Key (P). Apply pads (M) to the Bolts (L) to avoid desk scratches.



Similarly, attach Clamp (G) to Bracket (D) with Bolts (L) and 4mm Allen Key (P).



Adjust the Clamp width to fit with desk. Secure stand to desktop by tightening Clamp (G) or by Allen key (Q). Attach Base Support Cover (E) to Bracket (D).



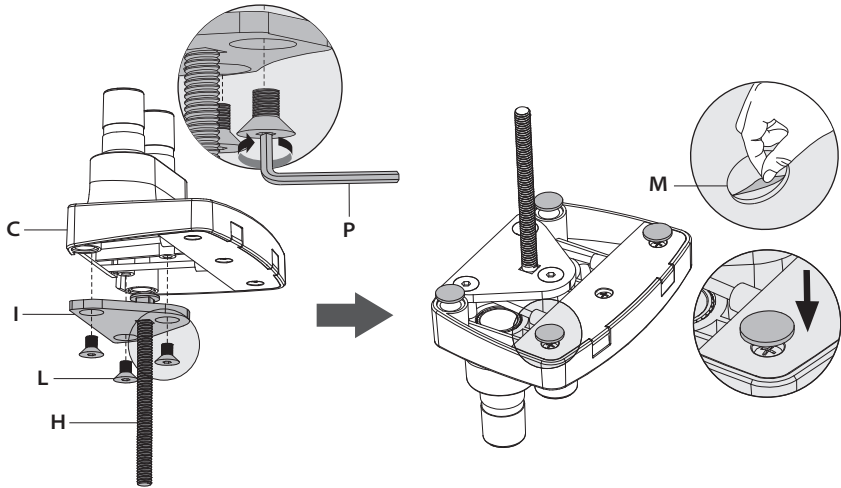
## STEP 1: (Continued)

### OPTION B: Grommet Base Installation

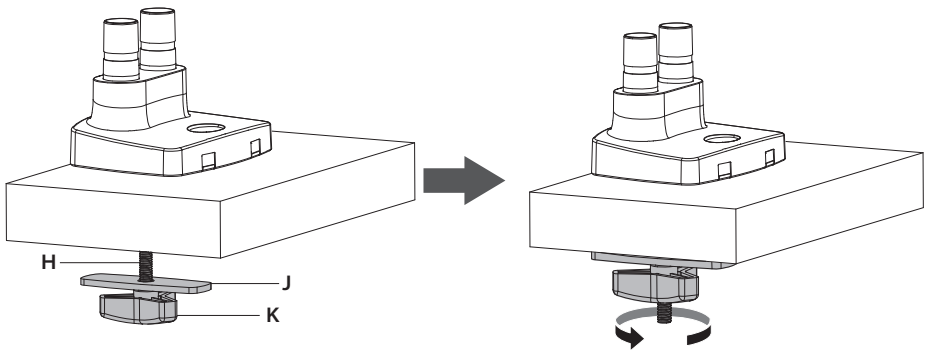
Place Carriage Bolt (H) through the center of Grommet Base (I).

Mount Grommet Base to Base (C) bottom with Bolts (L) and tighten by 4mm allen key (P).

Apply pads (M) to the Bolts (L) to avoid desk scratches.

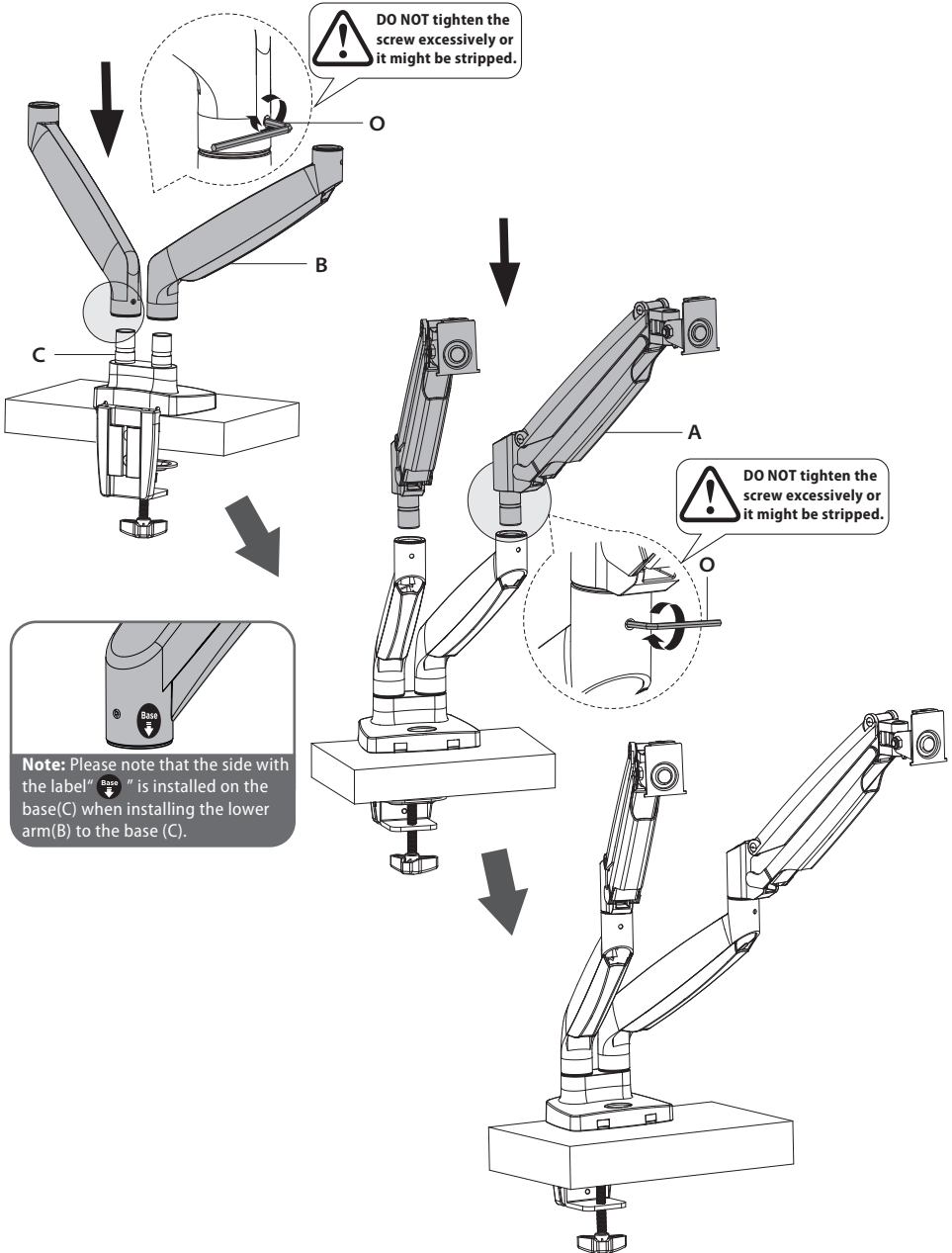


Run Carriage Bolt (H) through Grommet Hole on desktop. Attach Support Plate (J) and Wingnut (K). Last step, tighten Wingnut (K).



## STEP 2: Arm Installation

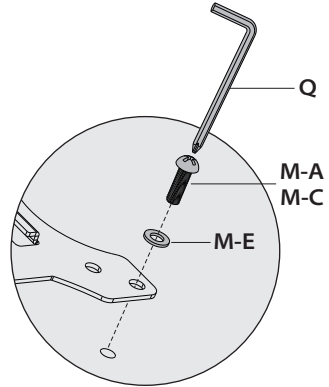
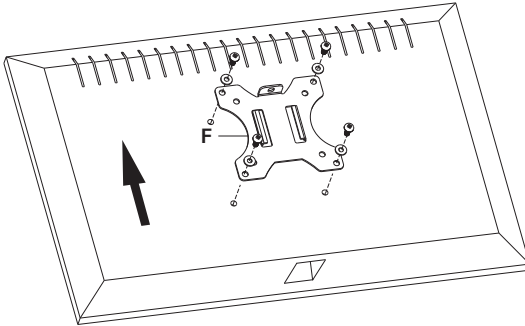
Install the lower arm (B) and the upper arm (A) to the base (C). Secure the arm by tightening the inside screw using 3mm Allen key (O).



## STEP 3 : Attach Monitor

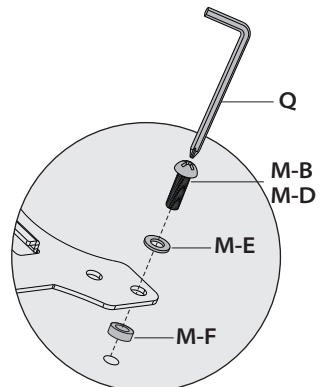
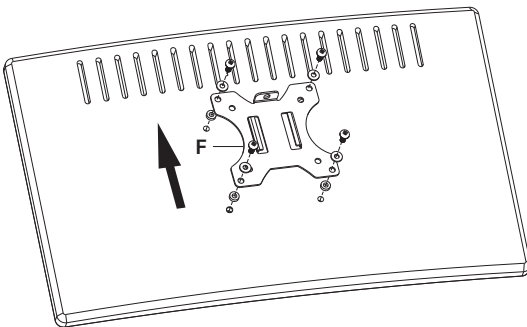
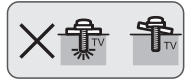
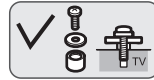
### OPTION A: Flat Back Monitor

Attach the VESA plate (F) to back of monitor and secure with screws(M-A)or(M-C) with washers(M-E) using 6 mm Allen Key (Q). Do not tighten the screws excessively or your monitor might be damaged.



### OPTION B: Curved Back Monitor

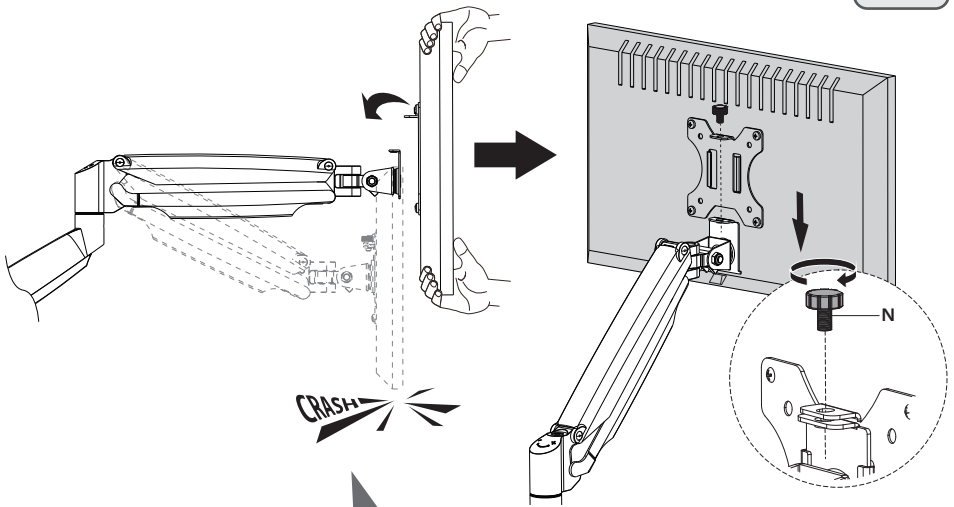
Attach the VESA plate (F) to back of monitor and secure with screws (M-B) or (M-D) with washers (M-E) and washers (M-F) using 6 mm Allen Key (Q). Do not tighten the screws excessively or your monitor might be damaged.



**NOTE:** Hand tighten screws to avoid over tightening.

## STEP 4: Hang Monitor

Slide the monitor onto the head of swivel arm, install the security bolt (N). Make sure the security bolt is installed before you rotate the monitor.

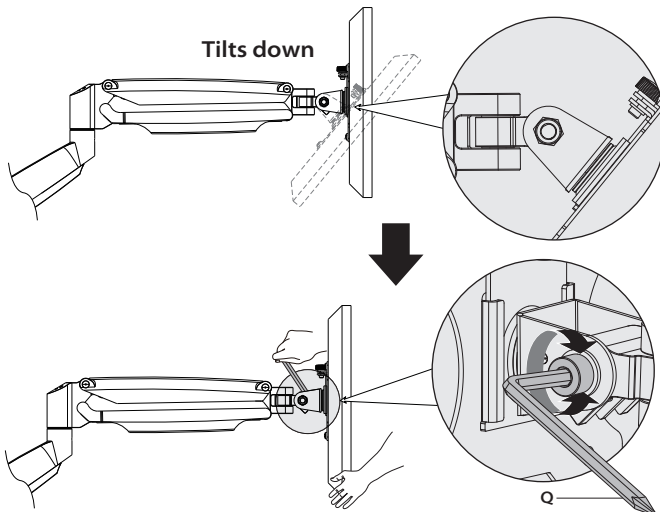


### Important Notice:

The gas spring tension is pre-set to the weakest level by default, please hold your monitor by both hands and do not let go so soon after the VESA plate is attached to the swivel arm. It's suggested to loose hold of the monitor in a slow & gentle way while observing if the gas spring arm falls down greatly.



Refer to below illustrations to adjust tilting angle of your monitor.



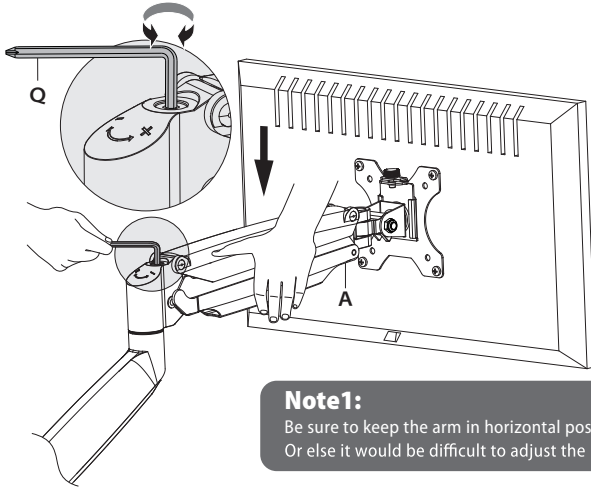
### Note:

1. Loosen the tilting bolt.
2. Adjust monitor to your desired tilting angle.
3. Retighten the tilting bolt to fix the tilting angle.



## STEP 5: Adjust Tension

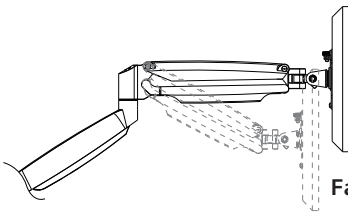
For proper functioning of this mount, depending on different weight of monitor you might need to adjust tension in upper arm (A) using 6 mm allen key (Q).



**CAUTION**

### Note1:

Be sure to keep the arm in horizontal position during adjustment. Or else it would be difficult to adjust the mount or damage the mount.

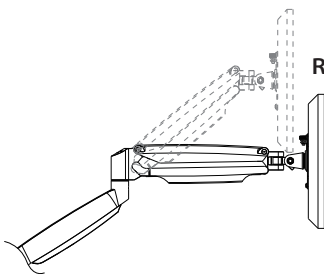


**Falls down**



After being attached to the arm, the monitor falls down and can not stay at the desired height by itself.

Turn counter-clockwise(“+”direction) to increase gas spring tension until the monitor can stay at the desired height by itself.



**Rises up**



After being attached to the arm, the monitor rises up and can not stay at the desired height by itself.

Turn clockwise(“-”direction) to reduce gas spring tension until the monitor can stay at the desired height by itself.

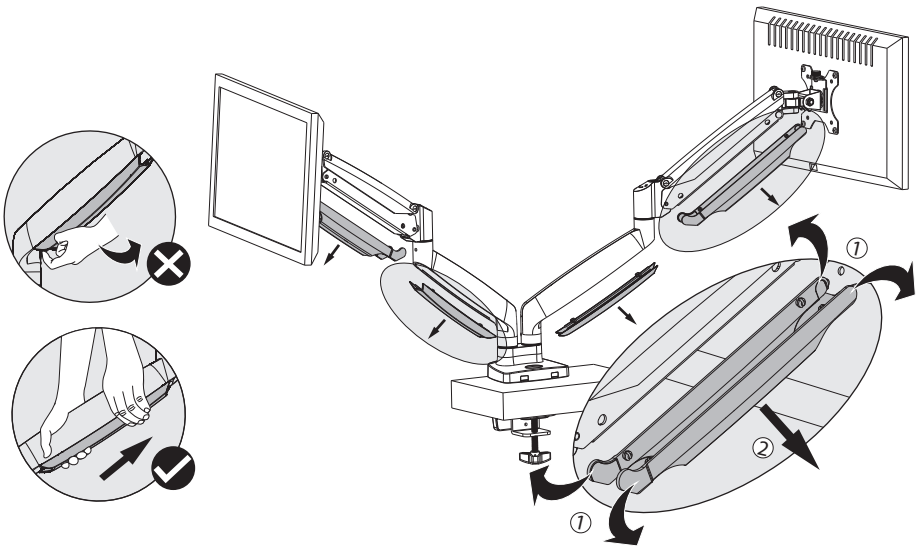
### Note2:

As for how many circles the screw should be turned, the table below is for reference.

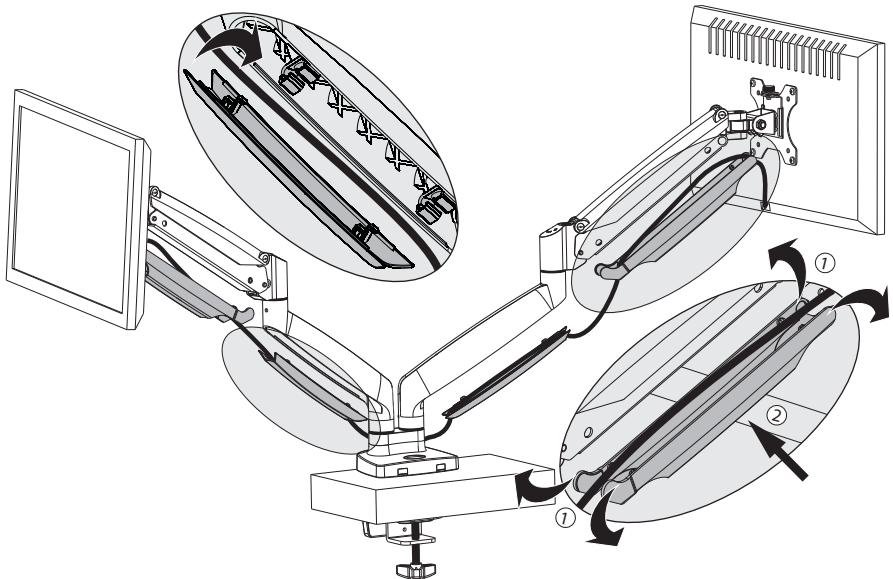
Monitor Weight	3kg	4kg	7kg	10kg	13kg	14kg
Circles (AT LEAST)	5	7	10	13	16	20

## STEP 6: Cable Management

Remove bottom plastic covers from arm as shown in diagram. From the arm, do not need to take much effort to pull the ends of the cable cover away from the arm.



Run cables from monitor through bottom of arm. Reattach plastic covers as shown in diagram.

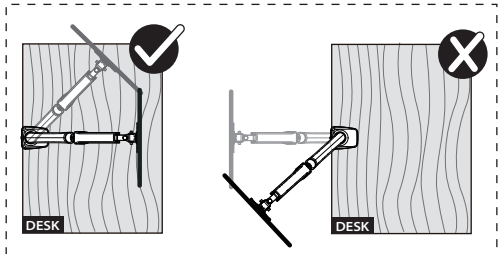
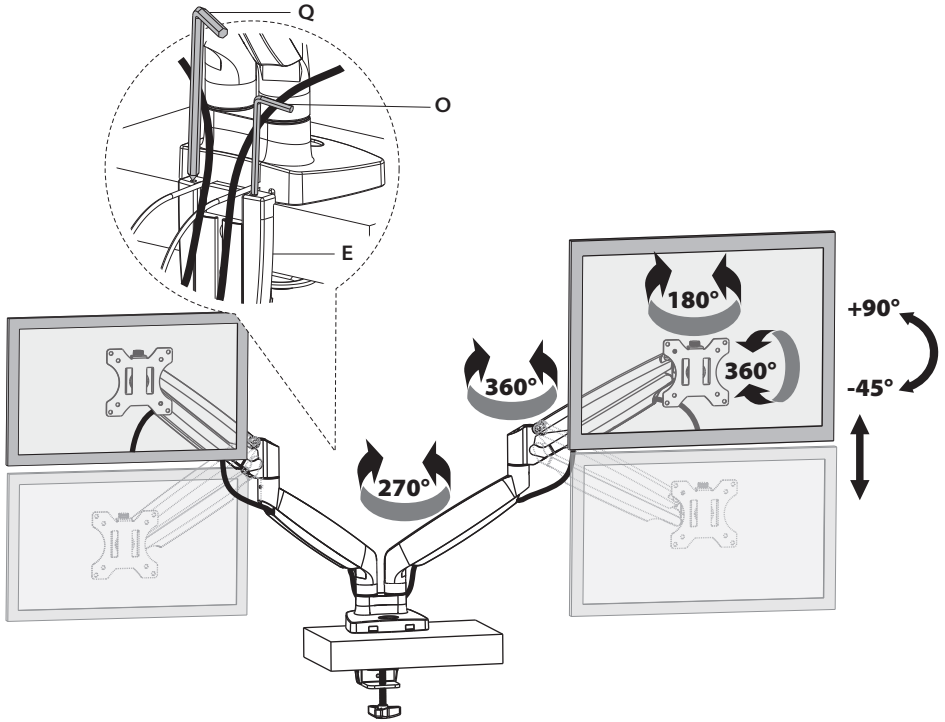


# Adjust as Desired

Allen key(Q,O) can be stored in Base Support Cover(E) for next time using.

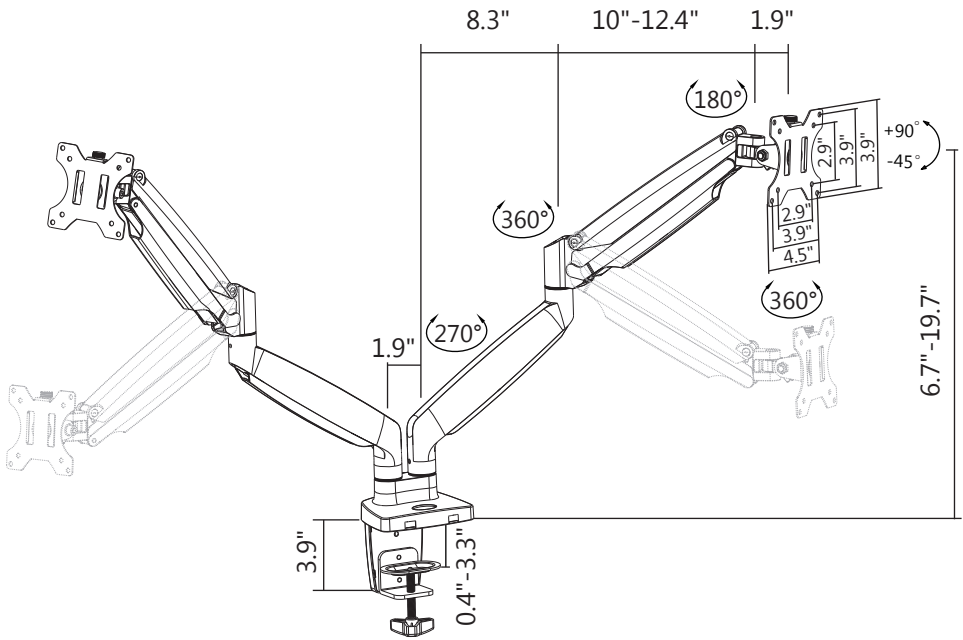
### Note:

When tilted, if the monitor sags or does not stay, please fasten the tilting bolt on the mount until the monitor can be held at any angle as needed.



Pay attention while clamp install !

# Product Dimensions





**CAUTION AND MAINTENANCE:**

- Never allow children to climb, stand, hang, or play on any part of monitor or stand.
- This product is intended for indoor use only. Using this product outdoors could lead to product failure and personal injury.
- Check that the bracket is secure and safe to use at regular intervals (at least every three months).

***MOUNTUP***

If you have any questions, please contact us.