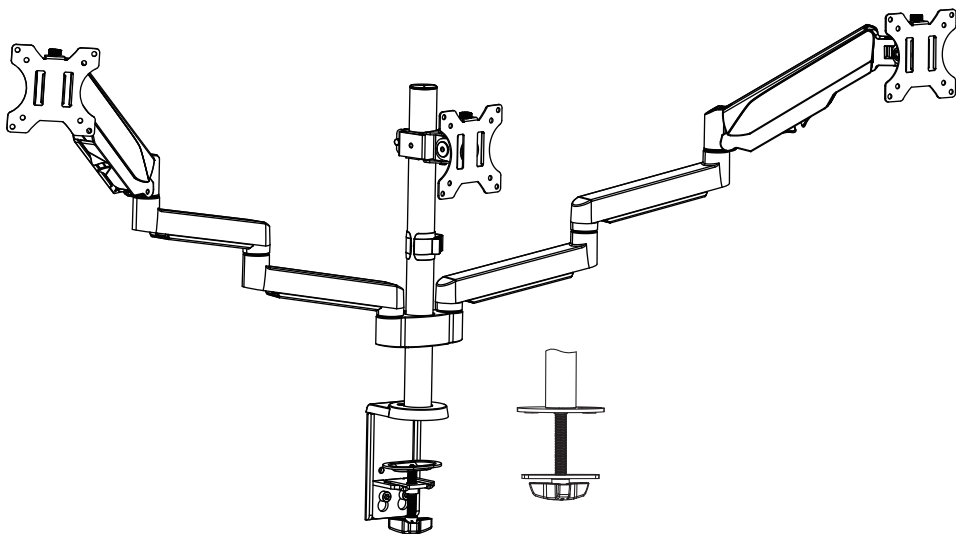

Triple Monitor Counterbalance Desk Mount

Instruction Manual



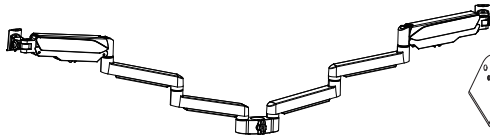
! WARNING!

If you have any confusions or are not quite sure about the installation, please do not hesitate to ask for our help.

Before assembly, please check and make sure all necessary accessories are included and undamaged. Improper installation, such as use the product for monitors over its load capacity or for any purpose not explicitly specified, may cause damage or serious injury. We would not be liable for any damage or injury caused by improper mounting or inappropriate use.

The kit contains small items that could be choking hazards if swallowed. Please keep them OUT OF REACH OF CHILDREN UNDER 3 YEARS OLD. ADULT SUPERVISION IS REQUIRED.

PACKAGE CONTENTS



A (x1)
Arm



B (x1)
Clamp

All are included in B



Bracket
B1



Clip Plate
B2



Bolt Y
B4



Bottom Plate
B3



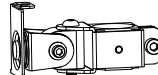
Bolts
B5



C (x1)
Decorative cover



D (x3)
VESA Plate



E (x1)
Middle Head



F (x1)
Pole



G (x1)
Wire clip



H (x3)
Bolt



I (x3)
Bolt



J (x1)
Support Plate



K (x1)
Grommet Base



L (x1)
4mm Allen Key



M (x1)
5mm Allen Key



N (x1)
6mm Allen Key



M-A (x12)
M4x12mm



M-B (x12)
M4x25mm



M-C (x12)
Spacer H10mm

NOTE: Not all hardware included will be used.



(1~8kg)x3
(2.2~17.6lbs)x3

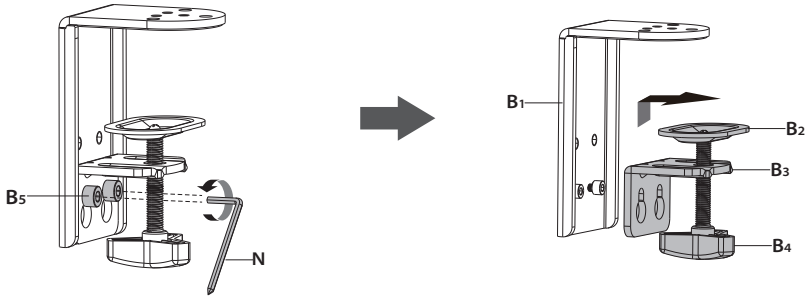
DO NOT EXCEED WEIGHT CAPACITY.

ASSEMBLY STEPS

STEP 1 : Clamp Installation OR Grommet Base Installation

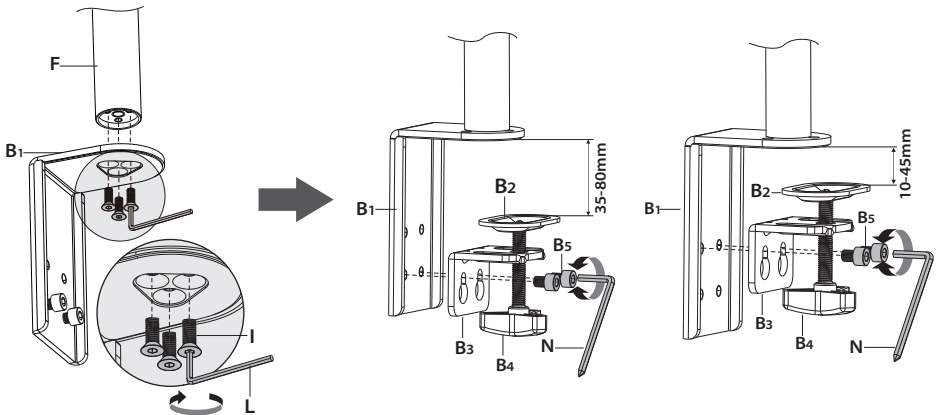
OPTION A: Clamp Installation

Loosen Bolts (B5) by using 6mm Allen Key (N), then lift clip plate (B2), bottom plate (B3), and bolt Y (B4) a little to release them from bracket (B1).

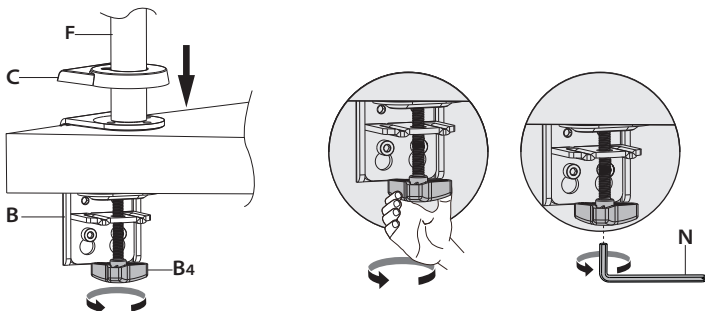


Mount bracket (B1) to pole(F) using bolts (I). Tighten using 4mm allen key(L).

Attach clip plate(B2), bottom plate(B3), bolt Y(B4), to bracket (B1) using bolts (B5) and 6mm allen key (N). Mount according to the thickness of desktop.



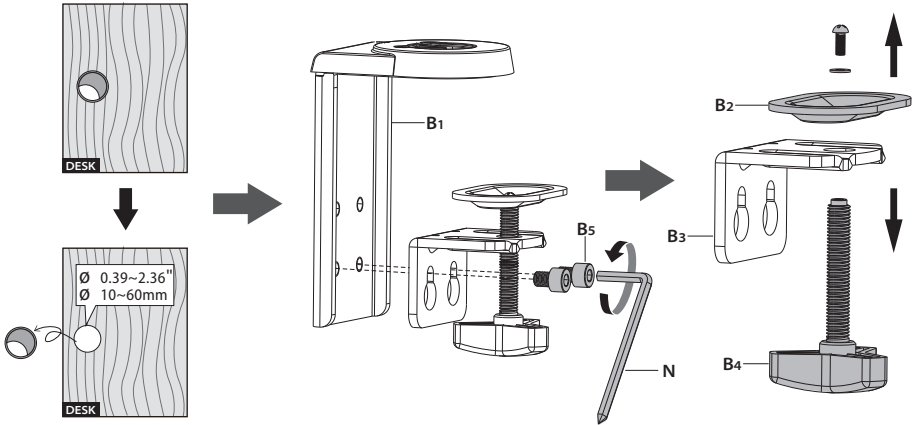
Decorative cover (C) to pole(F) and secure stand to desktop by tightening clamp (B). Tighten bolt Y (B4) or by using 6mm allen key (N).



STEP 1 : (Continued)

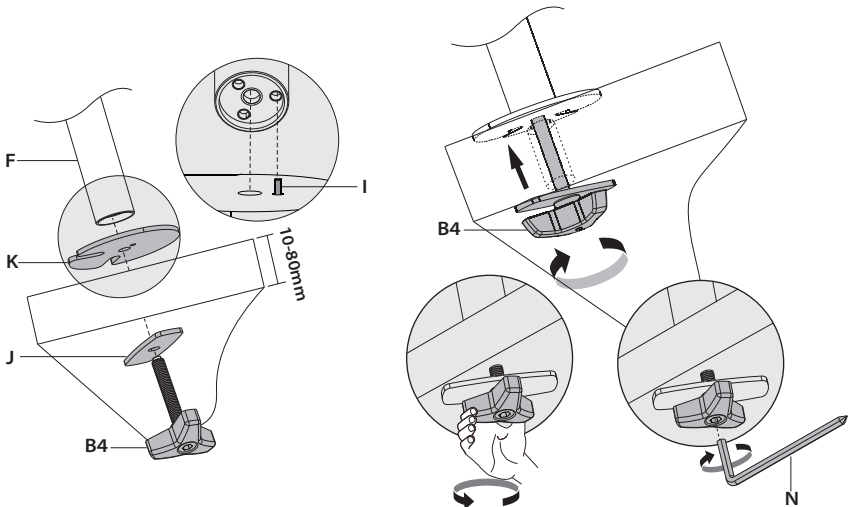
OPTION B: Grommet Base Installation

Use 6mm allen key(N) to detach the bolt(B5), clip plate(B2),bottom plate(B3) and bolt Y(B4) from clamp(B).



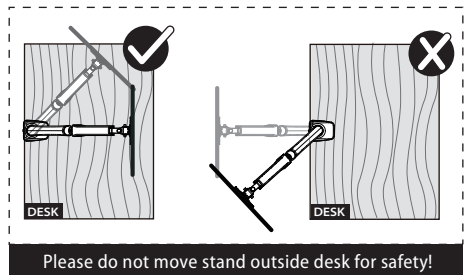
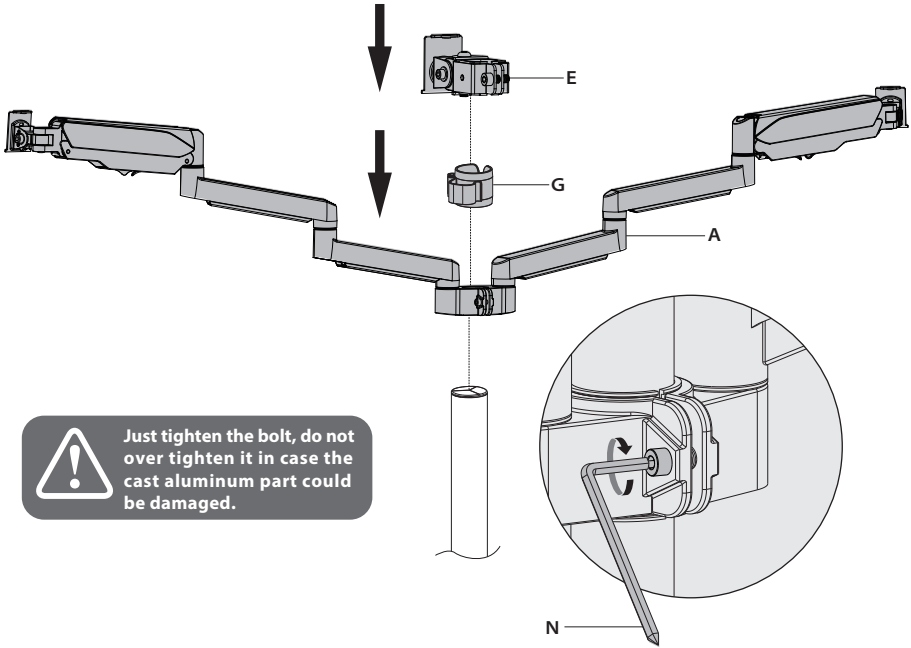
Install the grommet base plate(K) to the pole (F) using bolt (I).

Install pole(F) with bolt Y(B4) and support plate(J). Tighten bolt Y (B4) or by using 6mm allen key (N).



STEP 2 : Arm Installation

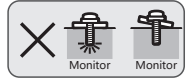
Install the middle head(E), wire clip(G) and swivel arm(A) to the pole.
Fasten the bolt with supplied 6mm Allen key (N)



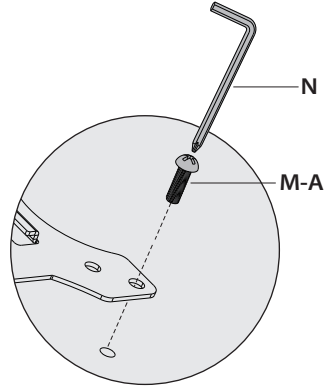
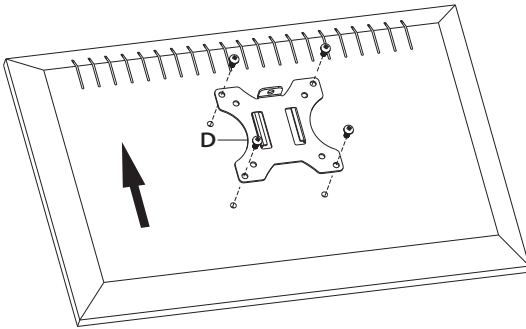
STEP 3: Attach Monitor

OPTION A: Flat Back Monitor

Attach the VESA plate (D) to the back of monitor and secure it by using a 6 mm Allen Key (N) to tighten screws (M-A).

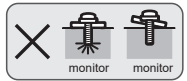
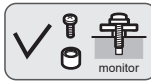


! Do not tighten the screws excessively or your monitor might be damaged.

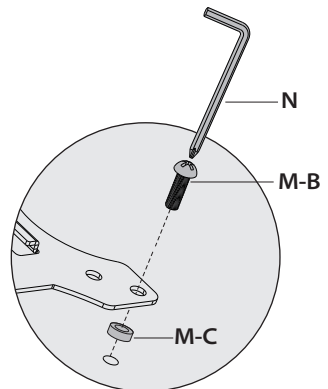
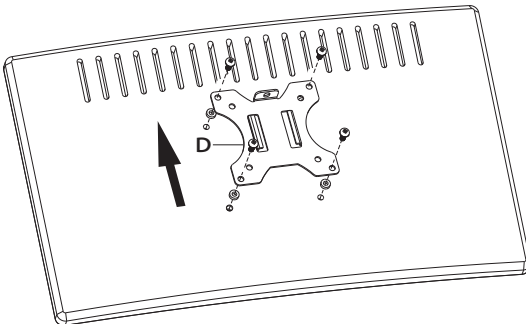


OPTION B: Curved Back Monitor

Attach the VESA plate (D) to the back of monitor and secure it by using a 6 mm Allen Key (N) to tighten screws (M-B) along with spacers (M-C).

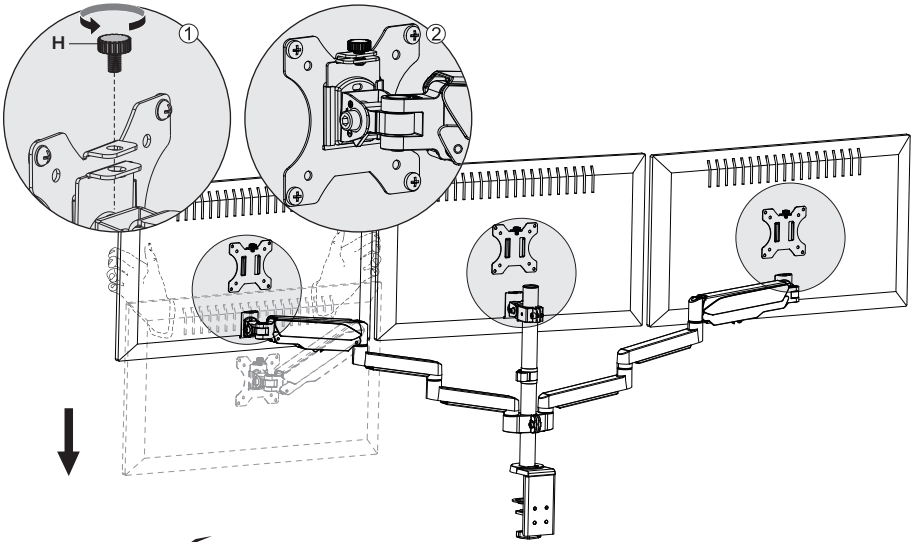


! Do not tighten the screws excessively or your monitor might be damaged.



STEP 4 : Hang Monitor

Slide the monitors onto the head of swivel arm. Install the security bolt (H). Make sure the security bolt is installed before you rotate the monitor.

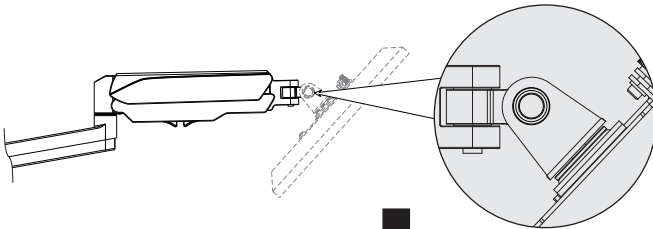


Important Notice:

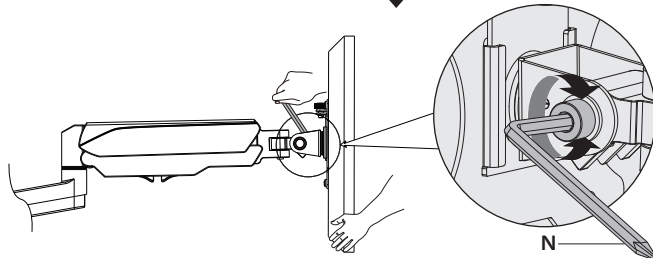
The gas spring is pre-set to minimum tension. Once the monitor is hung on, hold the monitor with both hands and DO NOT let go suddenly or immediately. Instead, leave the monitor in a slow & gentle way while observing whether the arms will fall down wildly.



Guideline to adjust monitor tilting angle.



Problem:
If monitor face down

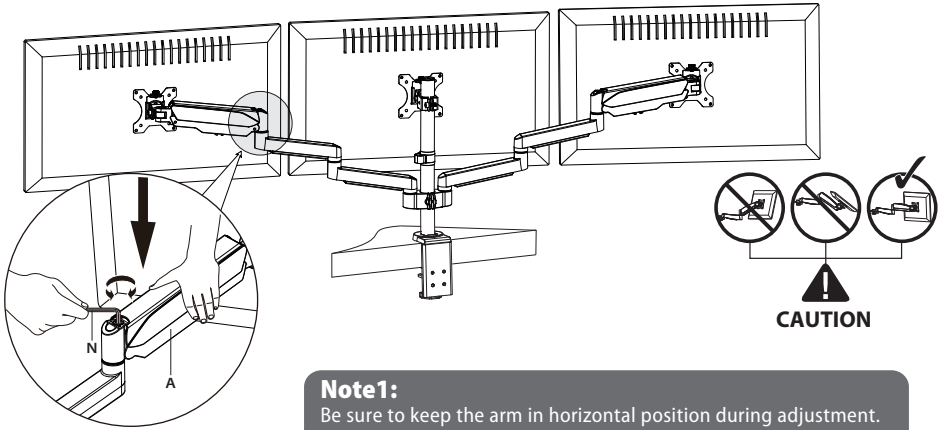


Solution:

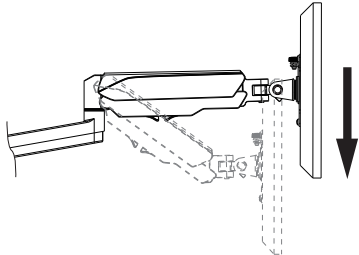
1. Loosen the tilting bolt.
2. Hold the bottom of monitor with one hand and adjust to determine your desired tilt angle.
3. Retighten the tilting bolt to fix the intended angle.

STEP 5 : Adjust Tension

For intended functioning of the mount, you may need to adjust the tension of Upper Arm (A) in accordance with your monitor weight by 6 mm Allen Key (N).

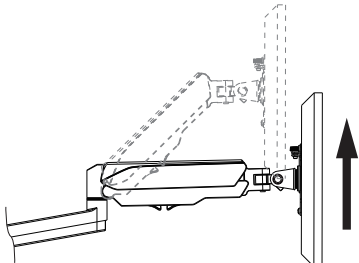


Note1:
Be sure to keep the arm in horizontal position during adjustment.
Or else it would be difficult to adjust the mount or damage the mount.



Situation 1: Arm falls down
Upper Arm with monitor falls down and fails to stay where intended.

Solution:
Turn the inside screw counterclockwise(“+”direction) to increase gas spring tension until the arm can stay as intended.



Situation 2: Arm rises up
Upper Arm with monitor rises up and fails to stay where intended.

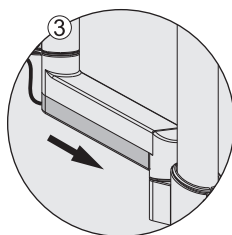
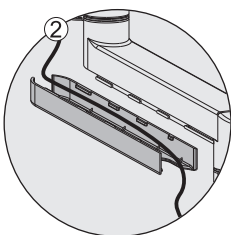
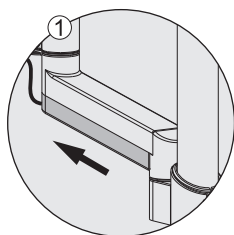
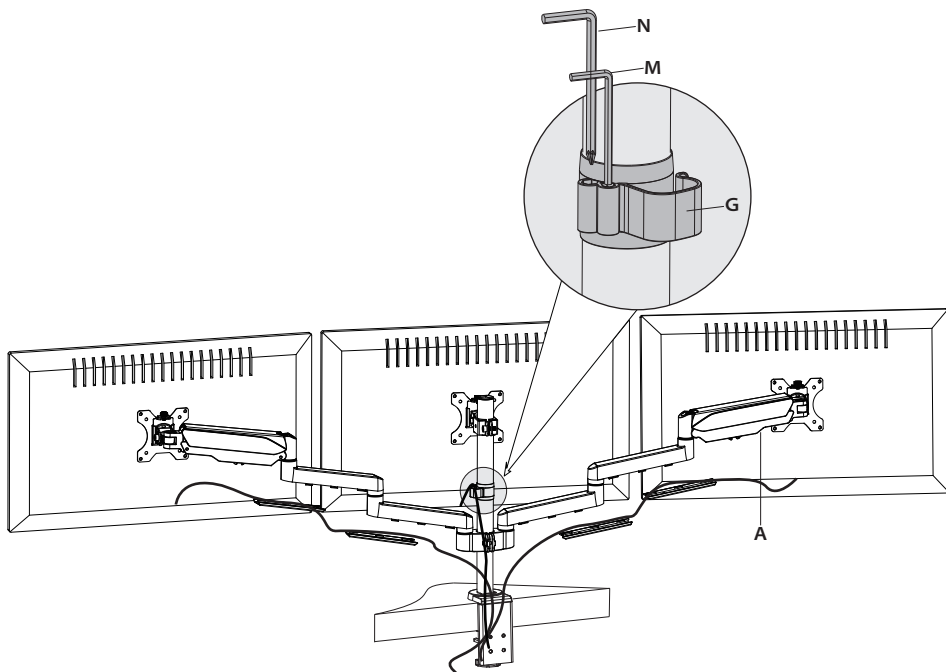
Solution:
Turn the inside screw clockwise(“-”direction) to decrease gas spring tension until the arm can stay as intended.

Note2:
For how many circles the screw should be turned, please refer to the table below.

Monitor Weight	1kg	2kg	3kg	4kg	5kg	6kg	7kg	8kg
Circles (AT LEAST)	min	1	2	5	7	10	13	15

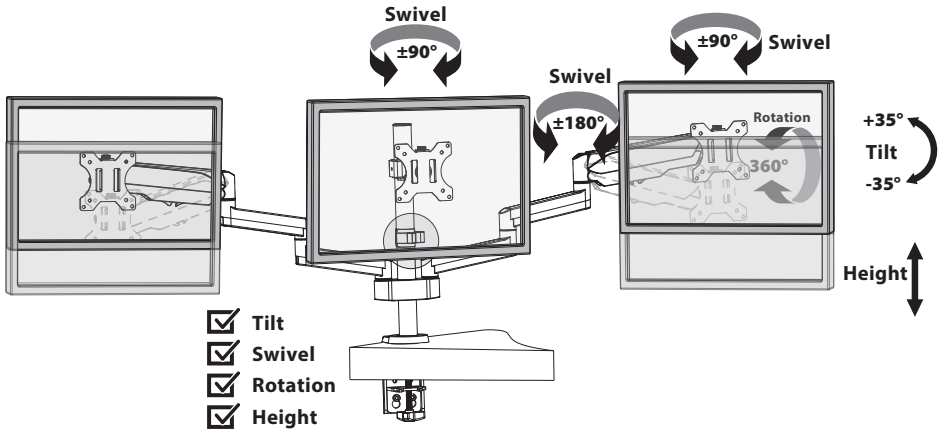
STEP 6 : Cable Management

Remove bottom plastic covers from gas spring arm (A) .Run cables from monitor through bottom of arm.
Reattach plastic covers as shown in diagram.
Store Allen keys (M,N) in wire clip (G) for future use.



Adjust as Desired

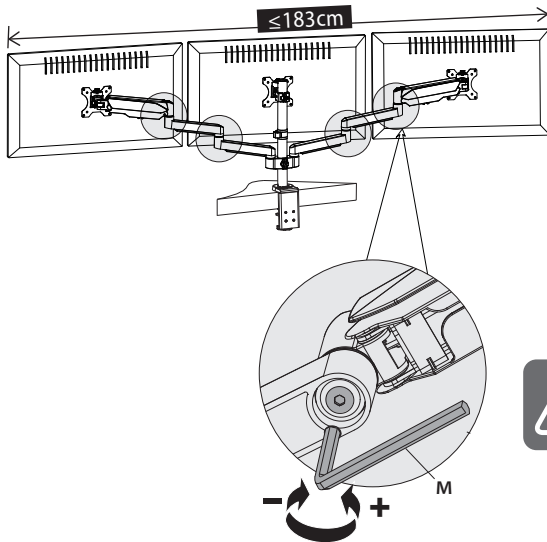
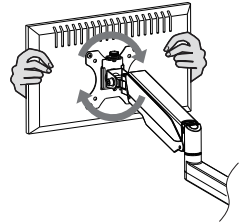
Adjust monitor position and rotation.



Note: To ensure stability, the tightness of the rotating axis has been preset, so it would be kind of difficult to rotate the VESA plate.

Suggestion: Please attach the monitor first, then hold the two sides of it with both hands, and rotate vigorously.

If that doesn't work out, please do not hesitate to ask for our help.

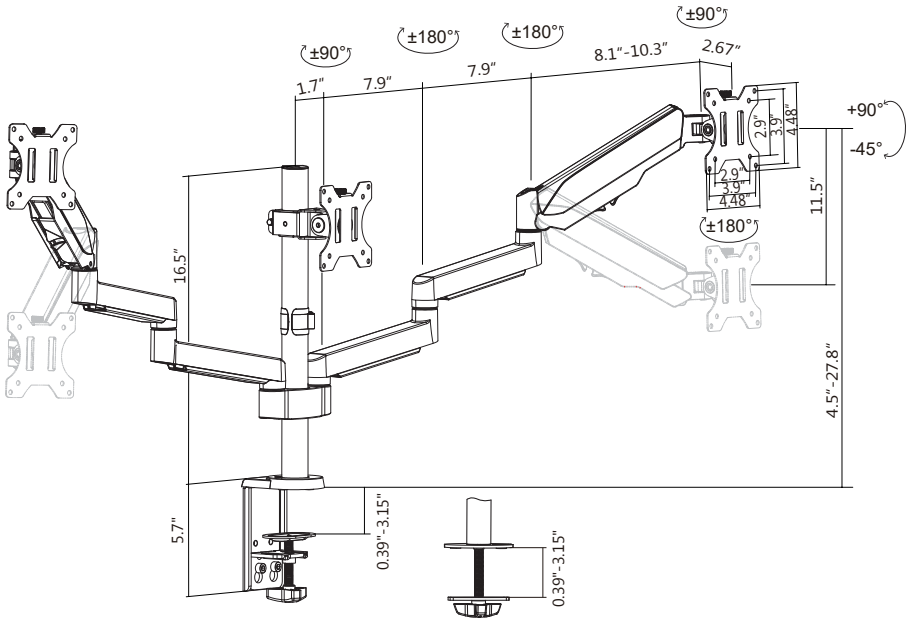


Note: The total length of 3 monitors after arrayed can not be longer than 183cm.



If necessary, refer to above illustrations to adjust the level of tightness of the arms.

Product Dimensions





CAUTION AND MAINTENANCE:

- Don't allow children to climb, stand, hang, or play on any part of monitor or stand.
- This product is intended for indoor use only. Using this product outdoors could lead to product failure and personal injury.
- Check that the bracket is secure and safe to use at regular intervals (at least every three months).