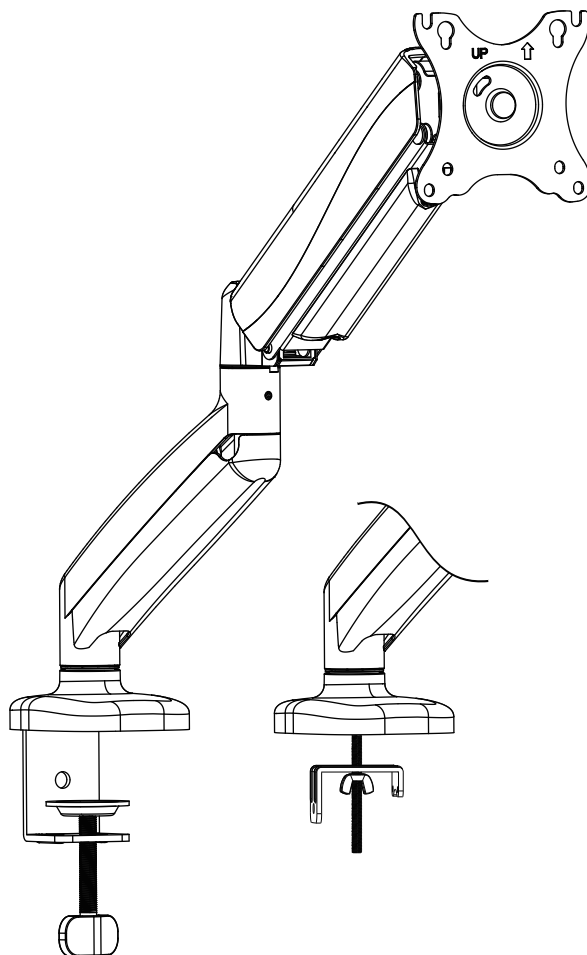

Single Monitor Desk Mount

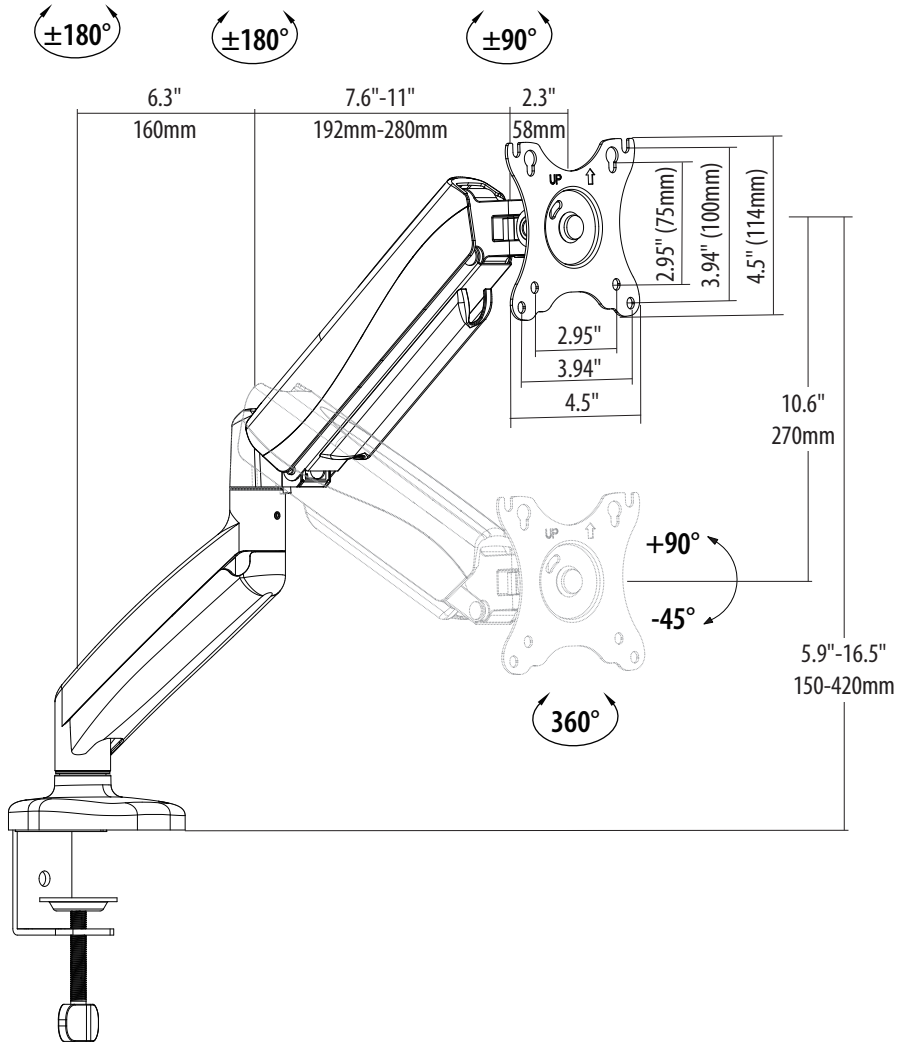
Instruction Manual

YZ2216-US2.0



If you have any questions, please feel free to contact Customer Service via Amazon before returning.

Product Dimensions



VESA
Compatible

75x75mm / 3x3"
100x100mm / 4x4"

Load Capacity

4.4 lbs ~ 17.6 lbs
2 ~ 8 kg

C-clamp

Desk Thickness
10~50mm (0.39~1.97")

Grommet
Φ10~60mm

Desk Thickness
10~80mm (0.39~3.15")

⚠ WARNING!

BEFORE ASSEMBLY

- Layout all components and hardware. Check all parts are included and undamaged.
- Should anybody intends to install or use this mount, please read and understand this manual carefully.
- If you do not understand these instructions or have any doubt about the safety instructions, assembly or use of this product, please contact our customer service.

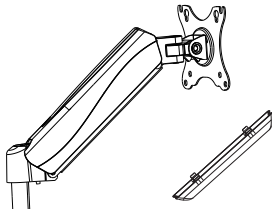
WARNING

- This product contains small items that could be a choking hazard if swallowed.
- KEEP AWAY FROM CHILDREN UNDER 3 YEARS OLD. ADULT SUPERVISION IS REQUIRED.
- Improper installation, such as using the product for monitors over its load capacity or for any purpose not explicitly specified, may cause damage or serious injury. We would not be liable for any damage or injury mounting or caused by improper inappropriate use.

CAUTION AND MAINTENANCE

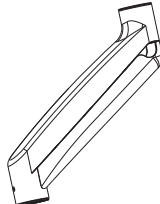
- Never allow children to climb, stand, hang, or play on any part of monitor or stand.
- This product is intended for indoor use only. Using this product outdoors could lead to product failure and personal injury.
- Check that the bracket is secure and safe to use at regular intervals (at least every three months).

PACKAGE CONTENTS

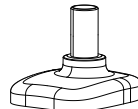


A (x1)
Upper Arm

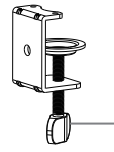
A1 (x1)
Cable Cover



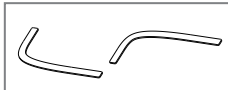
B (x1)
Lower Arm



C (x1)
Base



D (x1)
Clamp



E (x1)
Pad



F (x1)
Wingnut



G (x1)
Carriage Bolt

All are included in D



D1
Bracket



D2
Bolt



D3
Bolt



D4
Washer



D5
Clip Plate



H (x1)
3mm Allen Key



I (x1)
5mm Allen Key



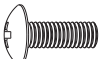
J (x1)
6mm Allen Key



K (x2)
Bolt M6x8mm



L (x1)
Plastic Sleeve



M-A (x4)
Screw M4x12mm



M-B (x4)
Screw M4x25mm



M-C (x4)
Spacer H10mm



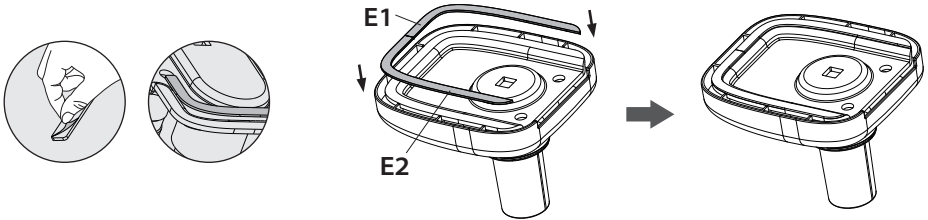
M-D (x2)
Set Screw M6x8mm
(Spare)

NOTE: Not all hardware included will be used.

ASSEMBLY STEPS

STEP 1: Pads Installation

Apply pads (E) to the base bottom to avoid desk scratches.

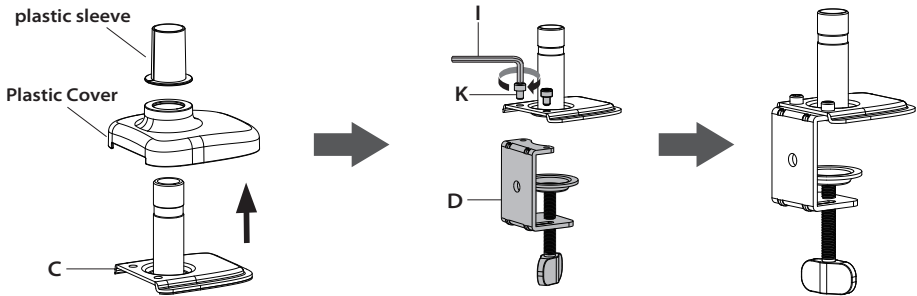


STEP 2: Base Installation

OPTION A: Clamp Installation

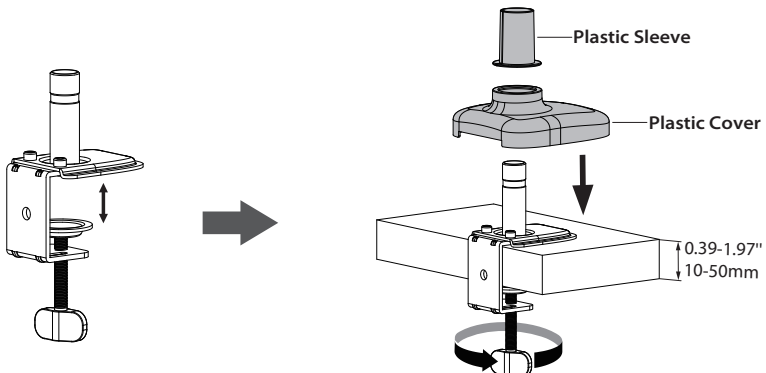
Remove the plastic sleeve and plastic cover from Base (C).

Mount Clamp (D) to the bottom of Base (C) by tightening bolts (K) with 5mm Allen Key (I).



Adjust the Clamp width to fit your desk.

Secure stand to the desktop by tightening clamp (D). Fix the plastic sleeve and plastic cover to Base (C).

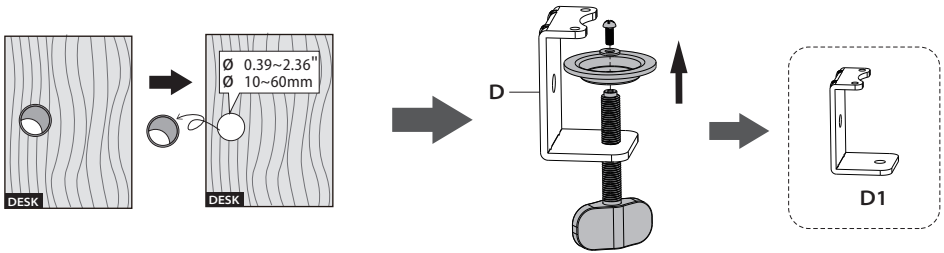


STEP 2: (Continued)

OPTION B: Grommet Base Installation

If existing grommet hole comes with a plastic protector, remove it to ensure a flat surface before installing the desk mount.

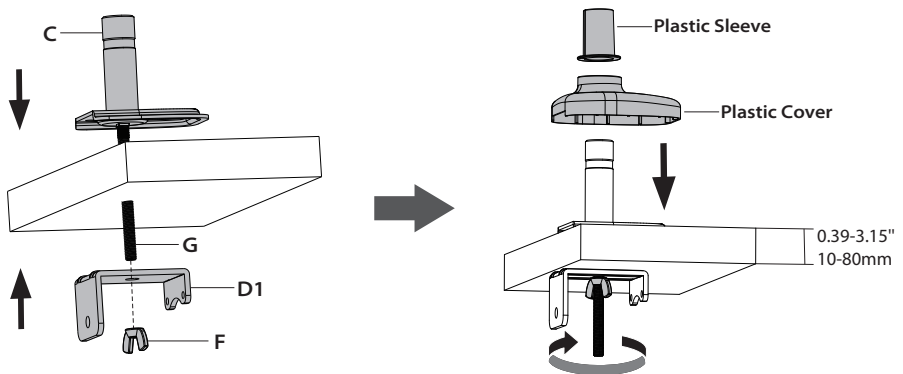
Firstly detach Bracket (D1) from Clamp (D).



Then remove the plastic sleeve and plastic cover from Base (C). Run Carriage Bolt (G) through Base (C).

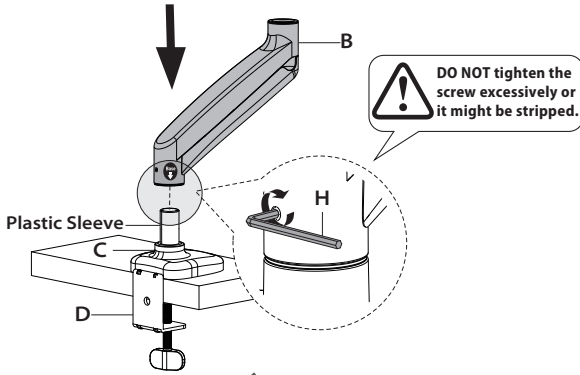


By tightening Wingnut (F) after making Bracket (D1) through Carriage Bolt (G) and stacked above Wingnut (F), Base (C) would be fixed to your desk securely. Install the plastic sleeve and plastic cover to Base (C) finally.

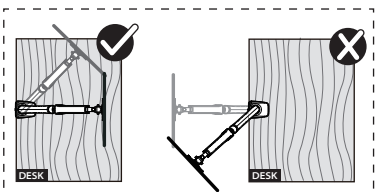
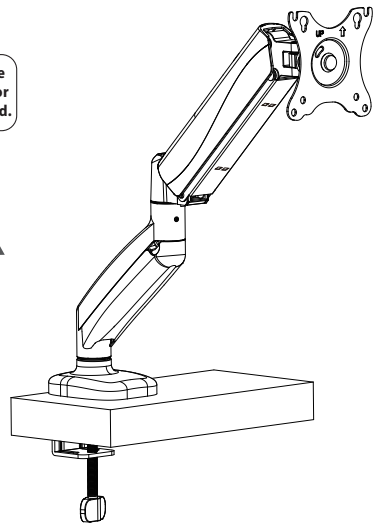
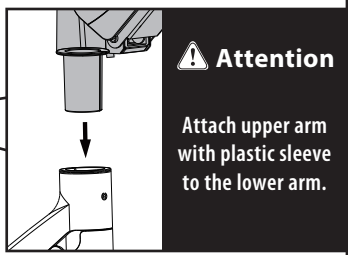
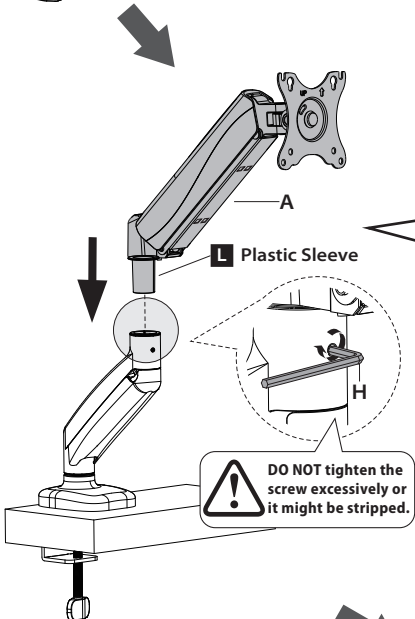
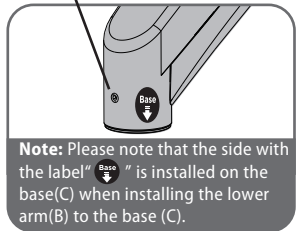


STEP 3: Arm Installation

Attach plastic sleeve (L) to the end of upper arm (A). Install the lower arm (B) and the upper arm (A) to the base (C). Secure the arm by tightening the inside screw using 3mm Allen key (H).



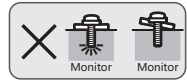
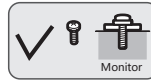
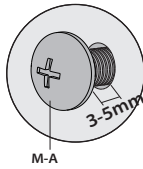
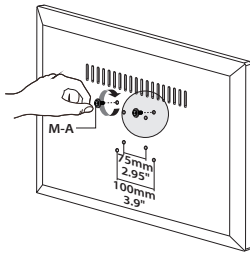
NOTE: If the inside screws are missing or stripped, you can use M-D spare screws.



Please do not move stand outside desk for safety!

STEP 4: Monitor Installation

If provided M-A/M-B screws do not fit your monitor, please contact us to get suitable screws.

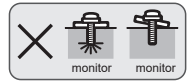
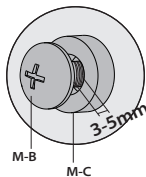
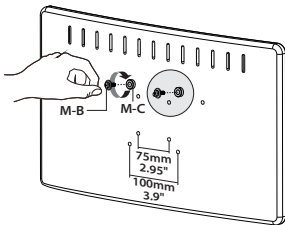
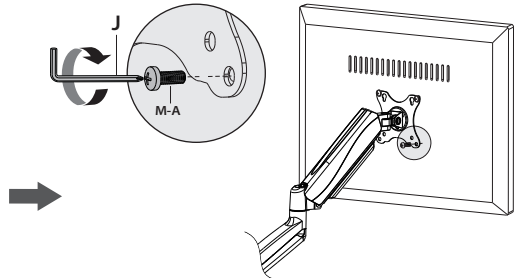
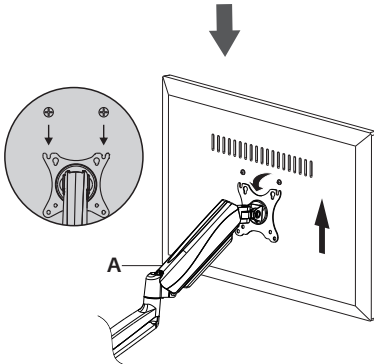


OPTION A: Flat Back Monitor

Firstly choose suitable screws (M-A) according to the hole size of your monitor back; then assemble two of them with 3-5mm space left.

Next hang your monitor onto VESA plate of Upper Arm (A). Finally finish the attachment by using a 6mm Allen Key (J) to tighten all chosen screws (M-A).

! Please make sure you don't tighten the screws excessively or it may cause your monitor damage.

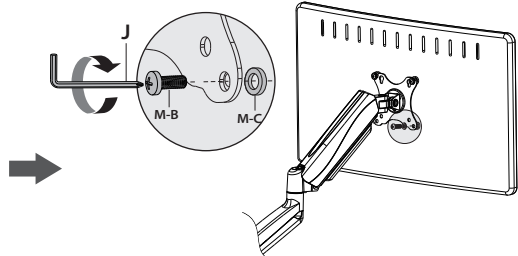
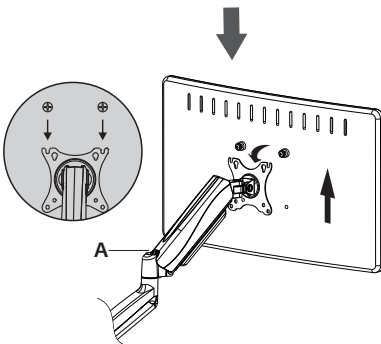


OPTION B: Recessed / Curved Back Monitor

Firstly choose suitable screws (M-B) according to the hole size of your monitor back; then assemble two of them and Spacers (M-C) with 3-5mm space left.

Next hang your monitor onto VESA plate of Upper Arm (A). Finally finish the attachment by using a 6mm Allen Key (J) to tighten all chosen screws (M-B) along Spacers (M-C).

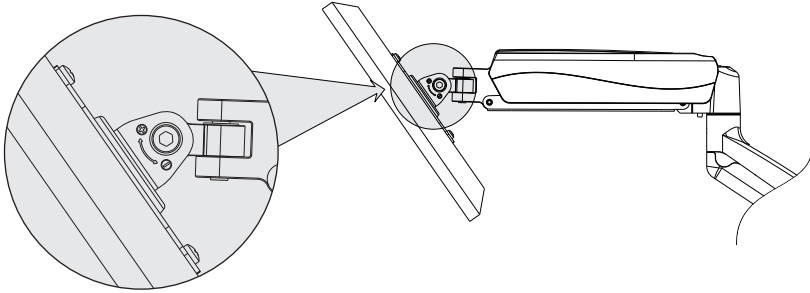
! Please make sure you don't tighten the screws excessively or it may cause your monitor damage.



STEP 5: Tilt Adjustment

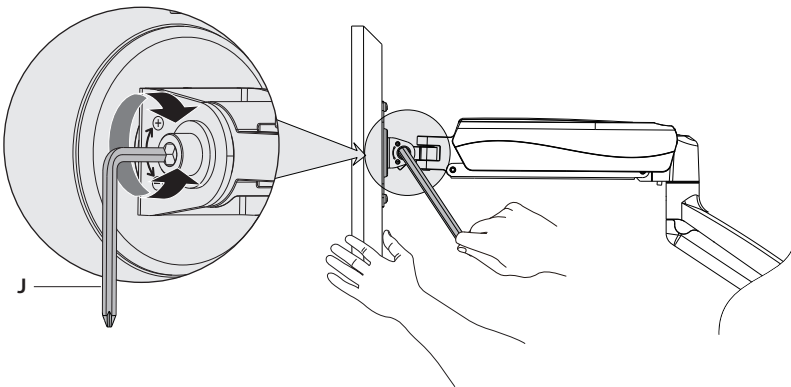
Problem:

Monitor tilts down.



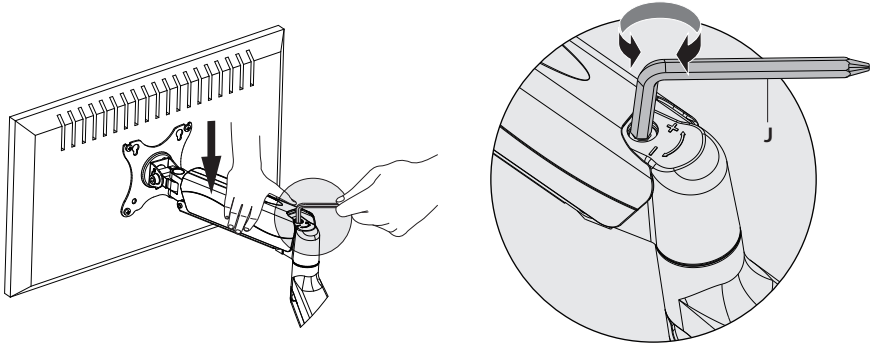
Solution:

1. Loosen the tilting bolt.
2. Hold the bottom of monitor with one hand and adjust to determine your desired tilt angle.
3. Retighten the tilting bolt to fix the intended angle.



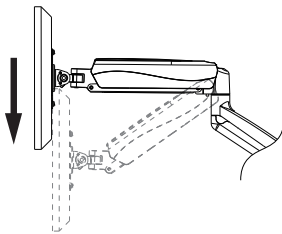
STEP 6: Tension Adjustment

The gas spring is pre-set to minimum tension. For intended functioning of the mount, you will need to adjust the tension of Upper Arm (A) in accordance with your monitor weight by 6mm Allen Key (J).



Note:

Be sure to keep the arm in a horizontal position during adjustment. Or else it would be difficult to adjust the mount or damage the mount.

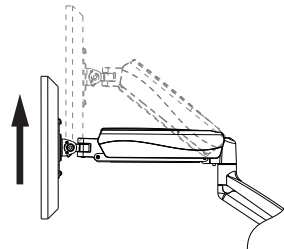


Situation 1: Arm falls down

Upper Arm with monitor falls down and fails to stay where intended.

Solution:

Turn the inside screw counterclockwise (“+” direction) to increase gas spring tension until the arm can stay as intended.



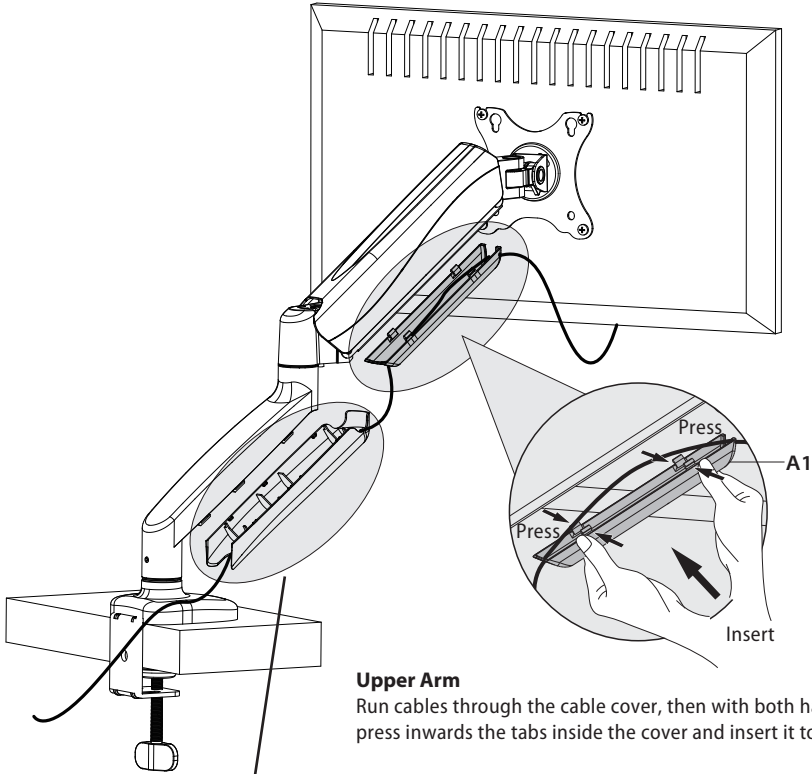
Situation 2: Arm rises up or can't press down

Upper Arm with monitor rises up and fails to stay where intended.

Solution:

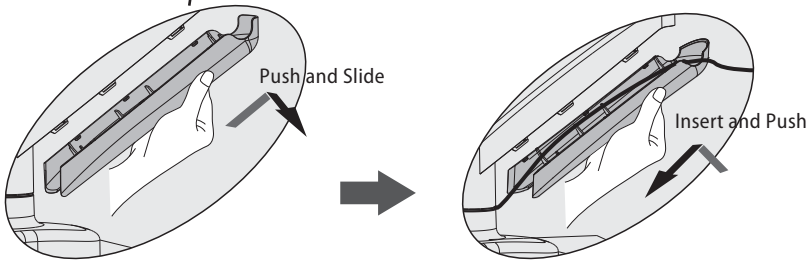
Turn the inside screw clockwise (“-” direction) to decrease gas spring tension until the arm can stay as intended.

STEP 7: Cable Management



Upper Arm

Run cables through the cable cover, then with both hands slightly press inwards the tabs inside the cover and insert it to upper arm.



Lower Arm

Remove the bottom plastic cover from lower arm as shown in the diagram below. Run cables through the cable cover, then insert and slide the cover down for reattachment.

Adjust as Desired

Adjust monitor position and rotation.

- Tilt
- Swivel
- Rotation
- Height

