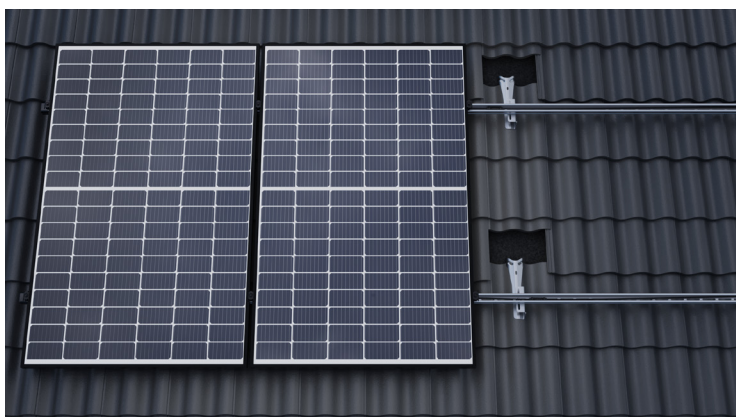


MAFI 91367 

Concrete Tile Bracket



About the Product

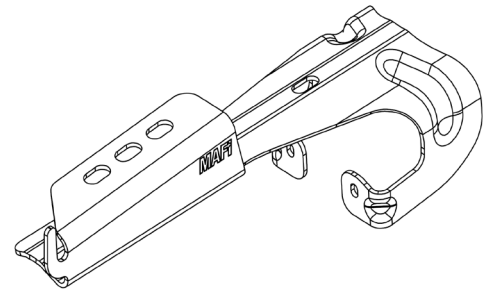
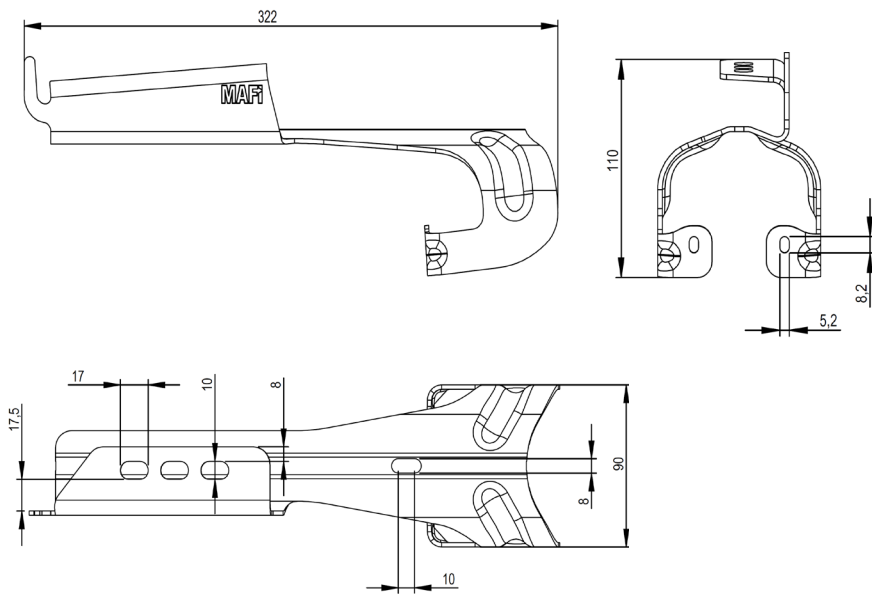
The Concrete Tile Bracket is designed to be fastened to the roof batten (min. 25x38mm) and it is secured with two screws. This enables the mounting of solar panels on curved concrete roof tiles. The Concrete Tile Bracket is made from Magnelis ® and it is IP-protected.

Flexibility

The Concrete Tile Bracket is profiled to follow the shape of a curved concrete tile to enable mounting without having to grind on, or to displace, the tiles. The Solar Rail can be installed both vertically and horizontally. When installed horizontally, the bracket has a versatile equipment hole pattern for matching the clamping zone of the panel and a stop hook to temporarily support the Solar Rail before mounting.



Measurements in millimeters



Info

Ultimate design load

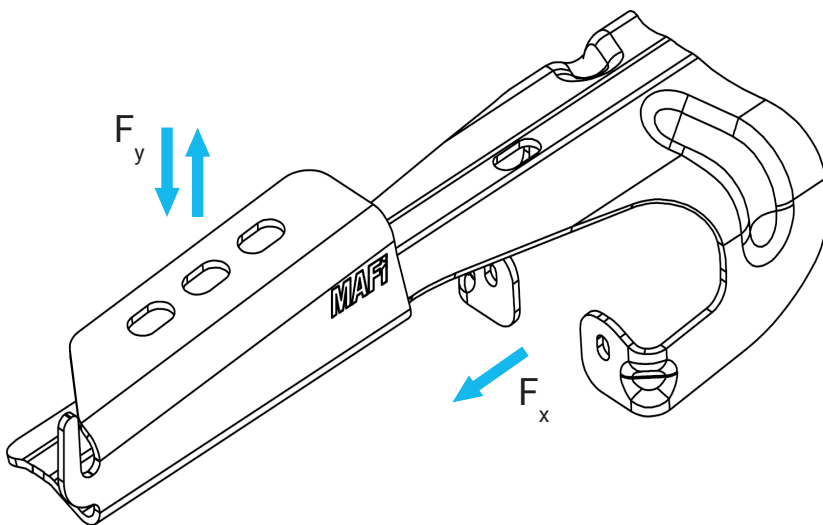
$F_{y \text{ down}}$ max: 1700 N (0°)*

$F_{y \text{ up}}$ max: 400 N (450 N)**

F_x max: 800 N (90°)*

*Ultimate design load for different roof slopes can be found in table.

**Ultimate design load when solar rail is mounted in upper installation slot.



Parts list

Part	Material	Quantity	Weight (g)
Concrete Tile Bracket	S550GD ZM310	1	620



91367