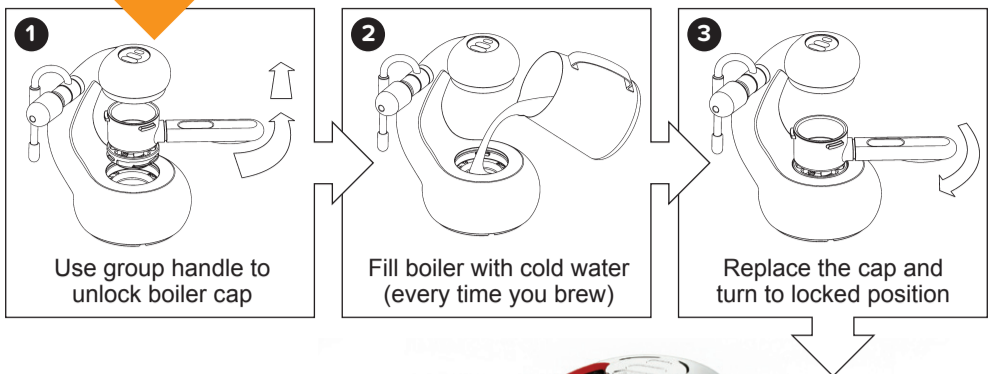


IMPORTANT: PLEASE watch the instruction video

Before using The Little Guy, watch the tutorial videos online at lovethelittleguy.com



TOP TIP

Filling the boiler

The little guy's brewing system is completely sealed and is independent of the body. Steam and water will pass freely between the body and brewing system, occasionally exiting between the head, boiler and body. It is normal for water to pass between the body and the boiler at the little guy's base. **This is avoidable by filling the boiler accurately.**



supermarket basket
i.e. store bought espresso grind



professional espresso basket i.e. ground for a professional espresso machine

instructions: 1. Fill basket full and level off 2. Tamp 3. Top up the basket and level off 4. Tamp again

7 Place the little guy on your chosen heat source... Setting a timer is a great idea!

the little guy induction top (or electric stove)

Place coffee jug directly on the little guy (no mat required)

the little guy induction top
Sold separately, this induction top has been designed specifically for the little guy and is highly recommended. You can also use an electric stove but third-party induction tops will not work reliably with the little guy.

the perfect extraction
The induction top will beep twice about the time the coffee should start dripping, showing you've dosed the basket perfectly.

+2 min Your coffee is now ready
Don't turn off the heat **yet**

gas flame

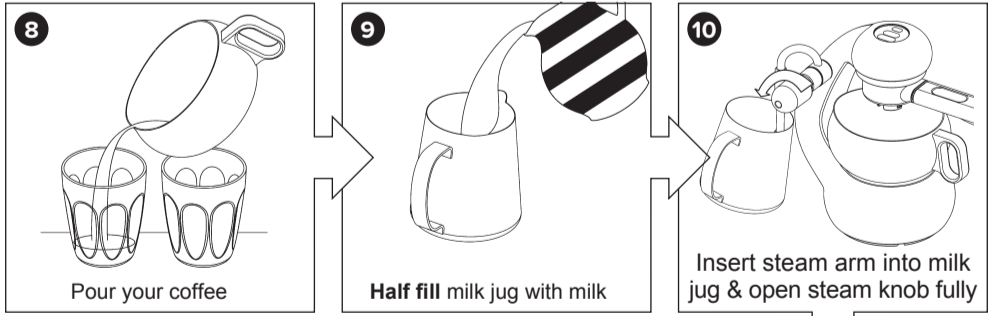
Place mat then coffee, jug on the little guy

using the little guy on a gas flame The best position for a gas flame is within 3cm of the centre of the boiler. The little guy's performance will be optimised by focusing the heat as close to the centre of the boiler as possible.

10 min the perfect extraction will start at approx 10 mins on a gas flame

+2 min Your coffee is now ready
Don't turn off the heat **yet**

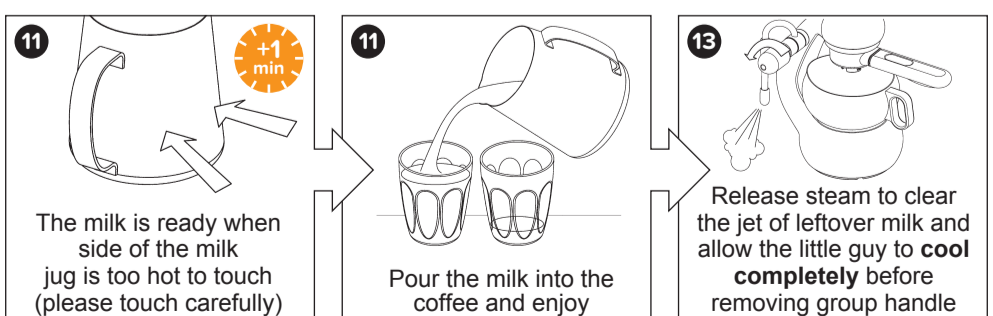
Now for the milk...



TOP TIP How to ensure optimum pressure to texture milk



the correct heat + the correct resistance = lots of steam pressure



STOP Now remember to turn off your heat source!