



Remembrance Day Poppy



This pattern is for personal use only and may not be sold, permission is granted to sell the finished item provided the item is handmade by you and you credit Full Bobbin Designs for the design. No mass production allowed.



Firstly, thank you for requesting this pattern! I really hope you enjoy making it and have fun choosing your fabrics.

When printing the pattern, it is important to ensure there is no scaling applied and it is printed at actual size.

This pattern does not include instructions on how to paper piece and assumes basic knowledge. If you are new to paper piecing, there are many tutorials on YouTube to help guide you. It is so easy once you know the basics.

A pattern envelope has been included if you would like to print the pattern and store it so that you can photocopy or use the pieces in the future or you may even wish to gift it to a friend.

This pattern includes a $\frac{1}{4}$ " seam allowance when complete.

If you have any queries or encounter any issues with this pattern, please feel free to contact me.

Please share your finished blocks to my Instagram page, I would love to see your creations [@fullbobbindesigns](https://www.instagram.com/fullbobbindesigns).

Happy Sewing!

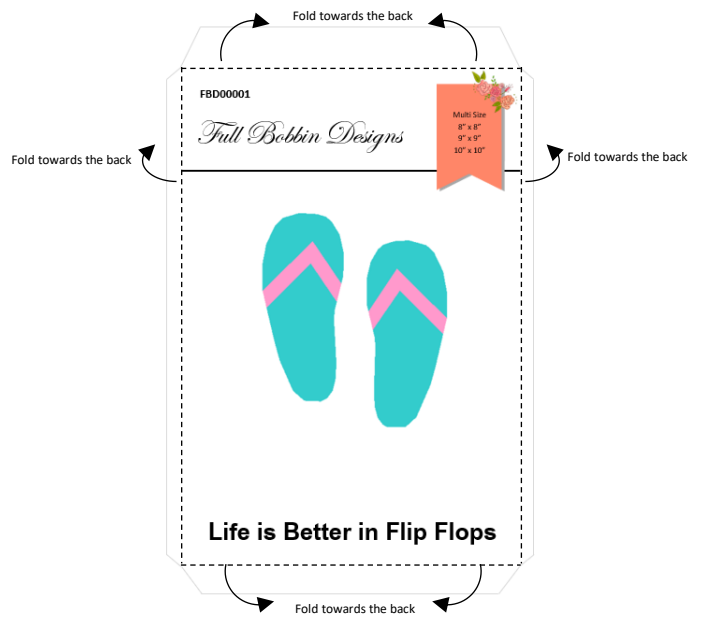
Sarah♥

Contents

Assembling the Pattern Sleeve	3
Printing and Joining Pattern Pieces	4
Pattern Sleeve Template.....	5
Design Page	7
Sewing the Completed Sections.....	8
8 x 8	9
9 x 9	12
10 x 10	15

Assembling the Pattern Sleeve

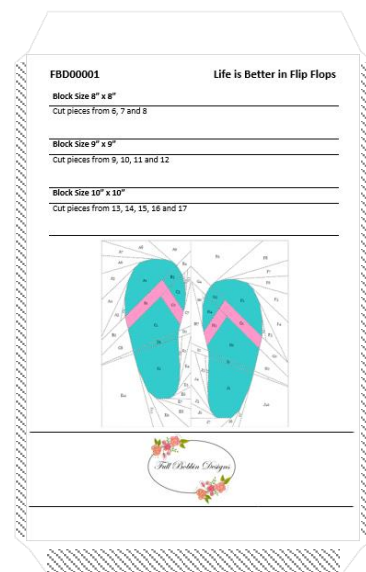
1. Cut out the front and back of the sleeve pattern along the grey lines.
2. Fold along the dashed lines towards the back, as shown in the diagram below.



3. With the front of the pattern sleeve facing down add glue only to the bottom and side sections you just folded in the previous step.



4. Place the back of the sleeve, lining it up to the folded edges and press the glued sections onto the back to secure and your pattern sleeve is complete.



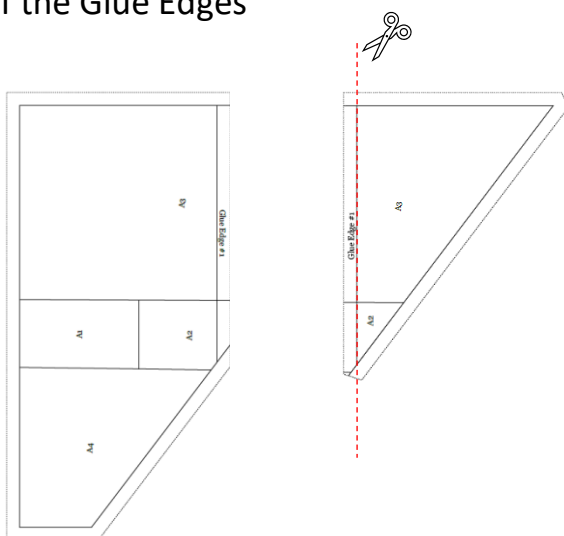
Printing and Joining Pattern Pieces

Some patterns include sections that need to be glued together before stitching as they are too large to be printed onto 1 page.

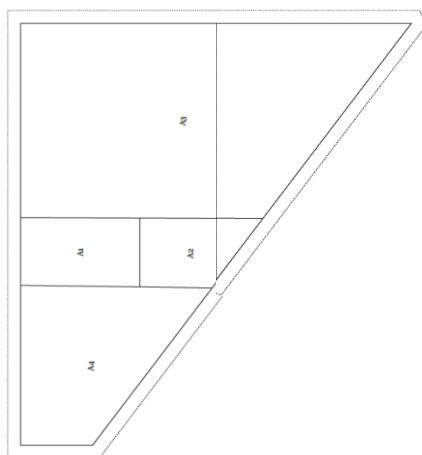
Each glue edge is numbered in sequence e.g. Glue Edge #1 should be glued to Glue Edge #1 and so on.

Once the sections are cut out you can glue or use tape to attach the sections together as follows:

1. Cut off one of the Glue Edges



2. Next, overlap the sections so the stitch lines meet and adhere them together



Full Bobbin Designs



Multi Size

8" x 8"

9" x 9"

10" x 10"



Remembrance Day Poppy

Remembrance Day Poppy

Block Size 8" x 8"

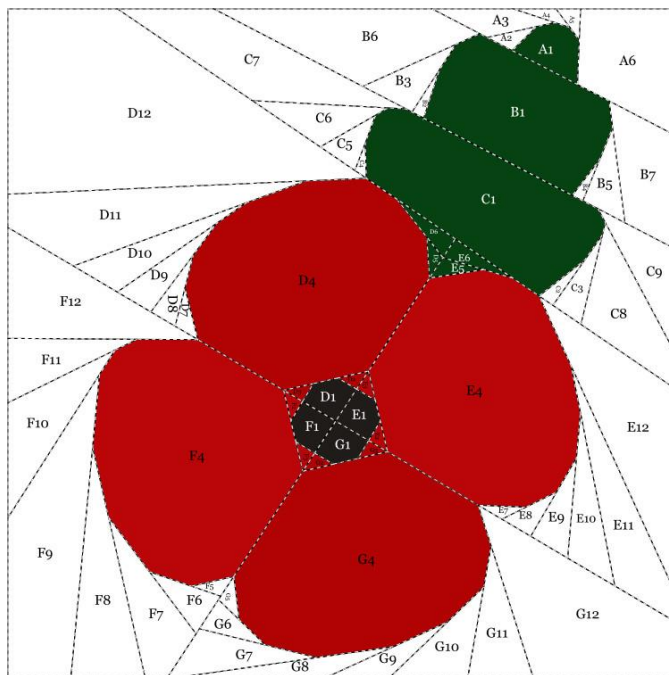
Cut pieces from pages 9, 10 and 11

Block Size 9" x 9"

Cut pieces from pages 12, 13 and 14

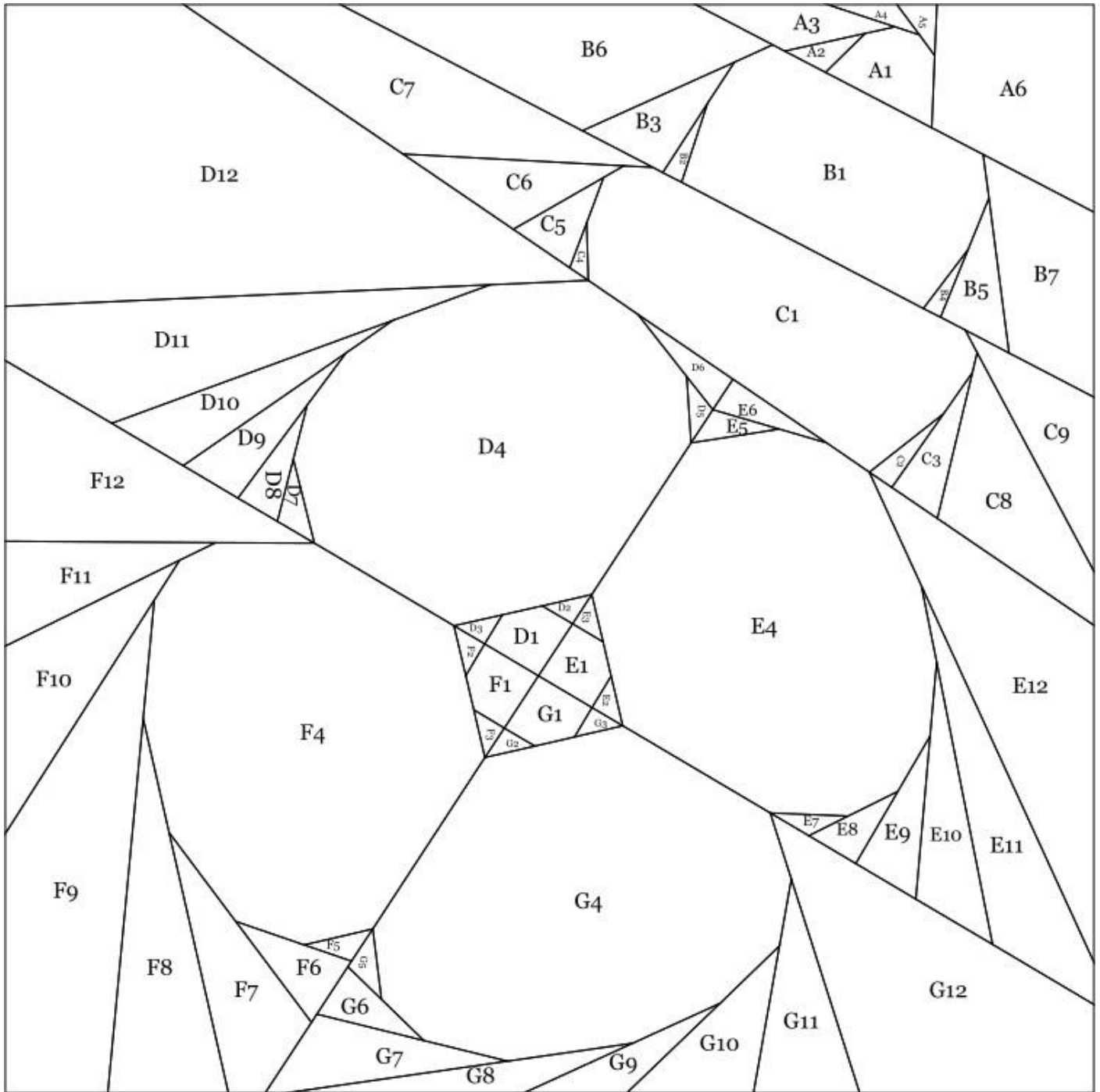
Block Size 10" x 10"

Cut pieces from pages 15, 16, 17 and 18

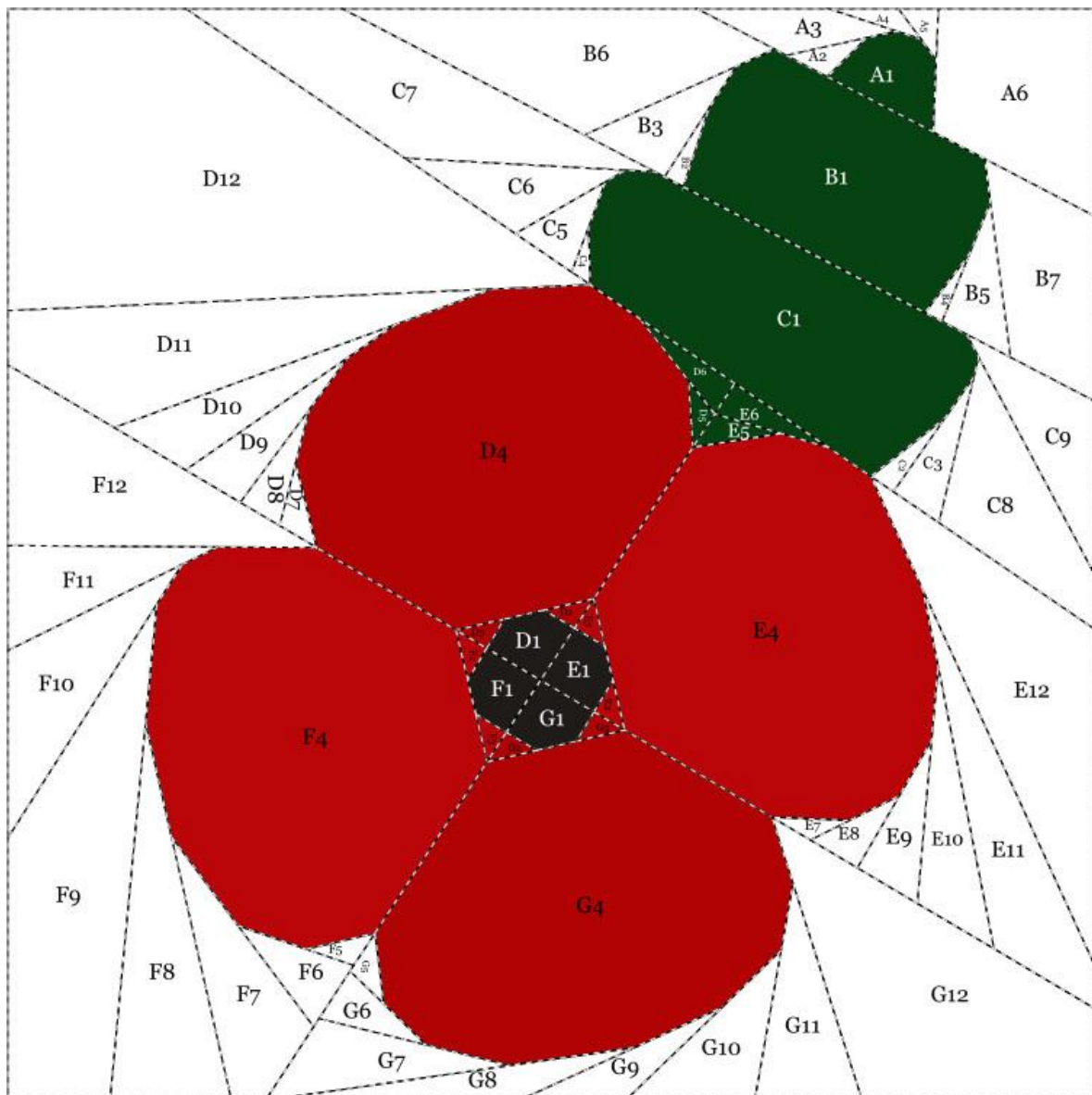


Design Page

Use this page to get creative with colour to help when choosing your fabric.

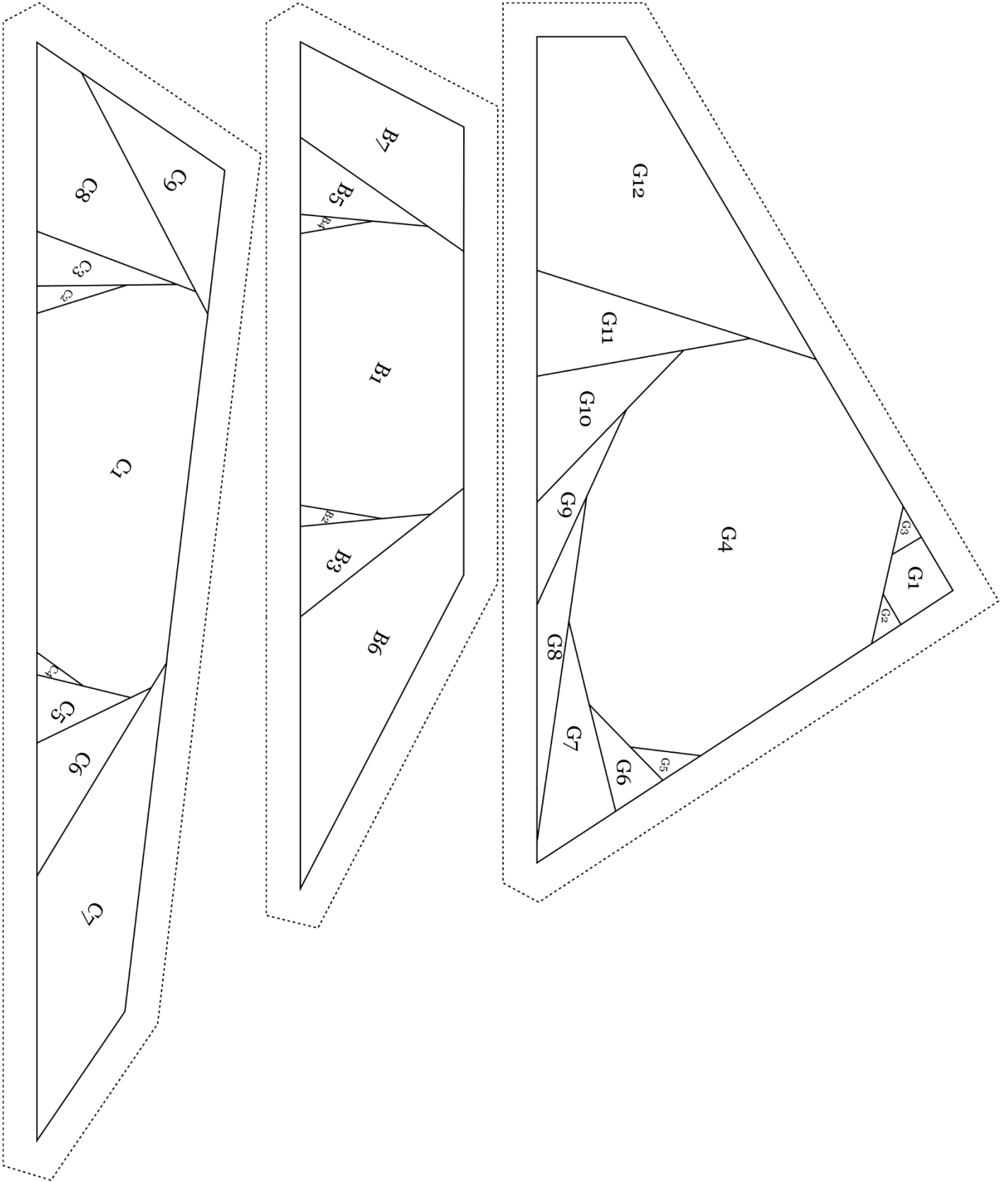


Sewing the Completed Sections

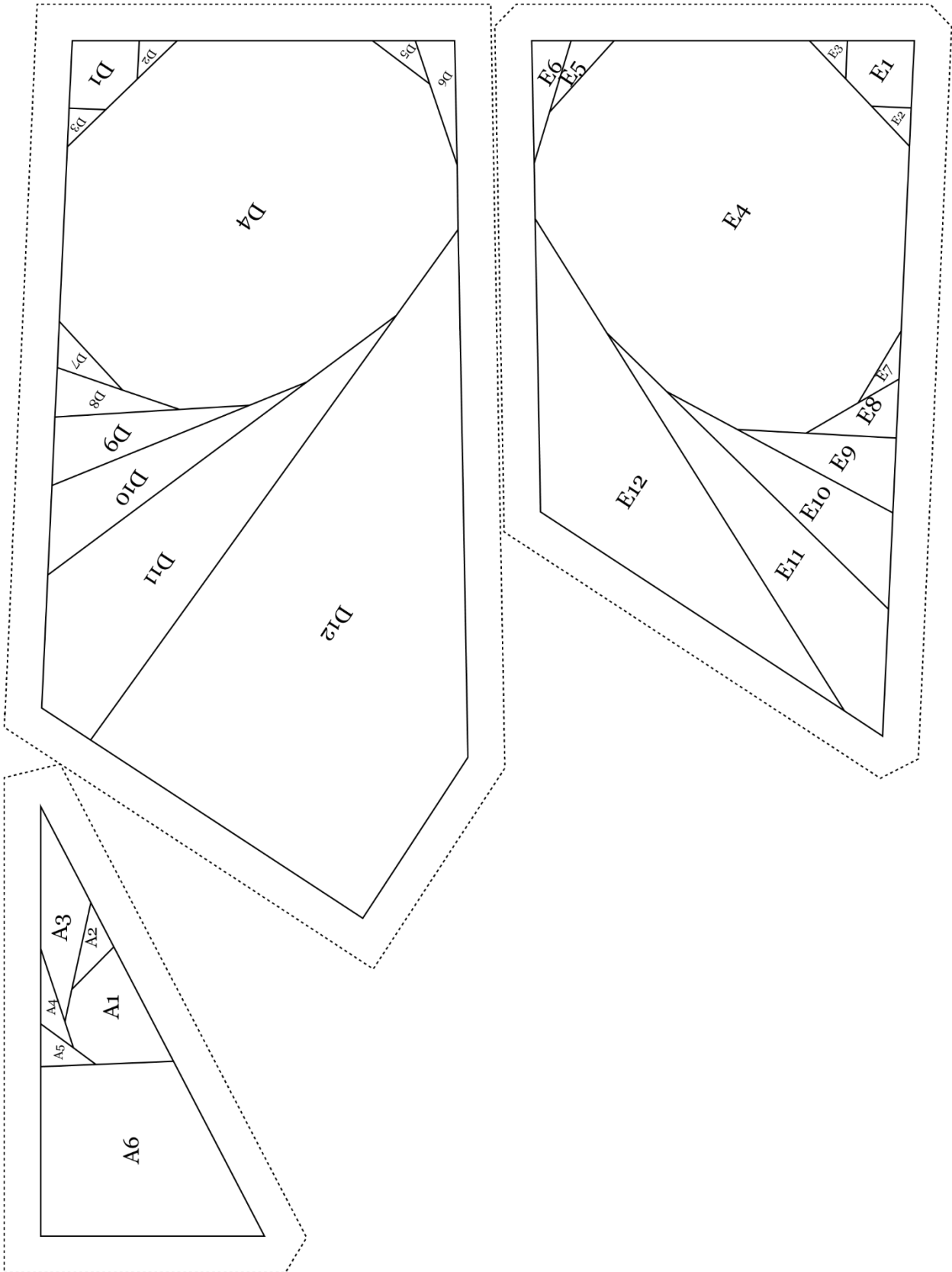


After completing each section, join them together as follows:

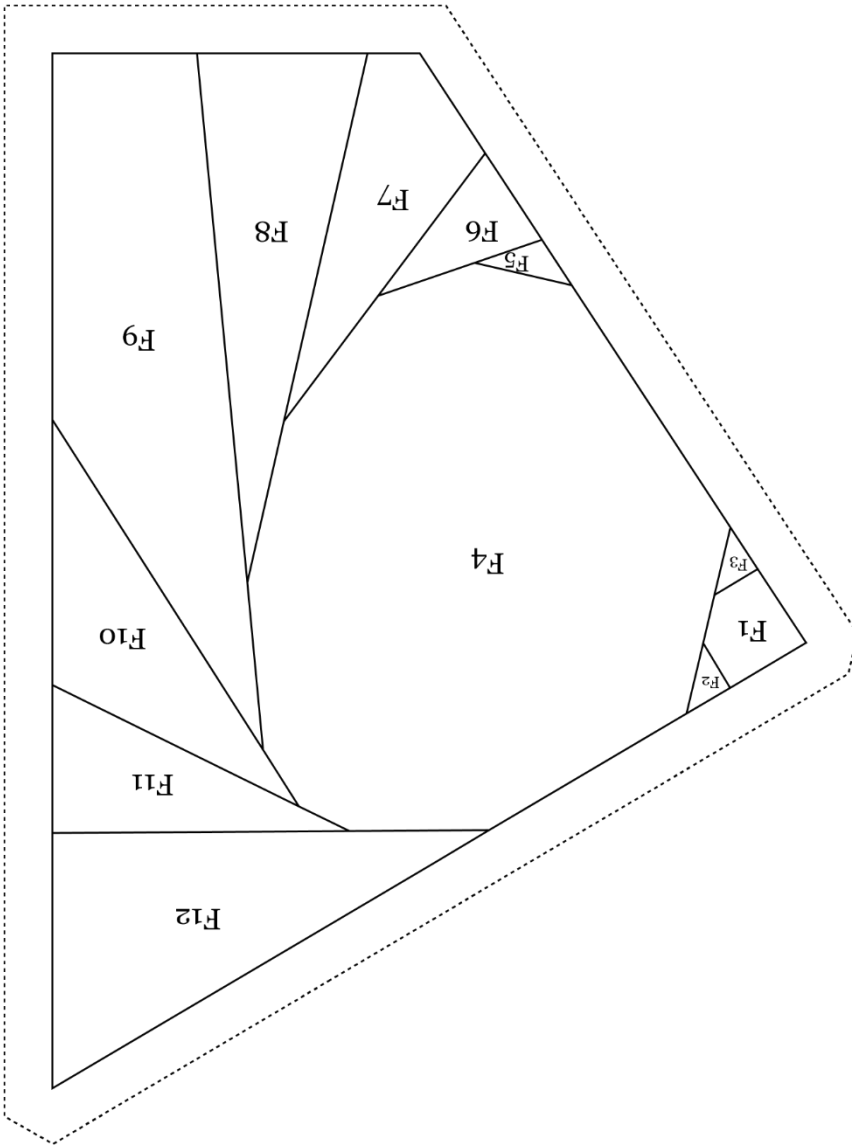
- A to B
- AB to C
- D to E
- F to G
- DE to FG
- ABC to DEFG



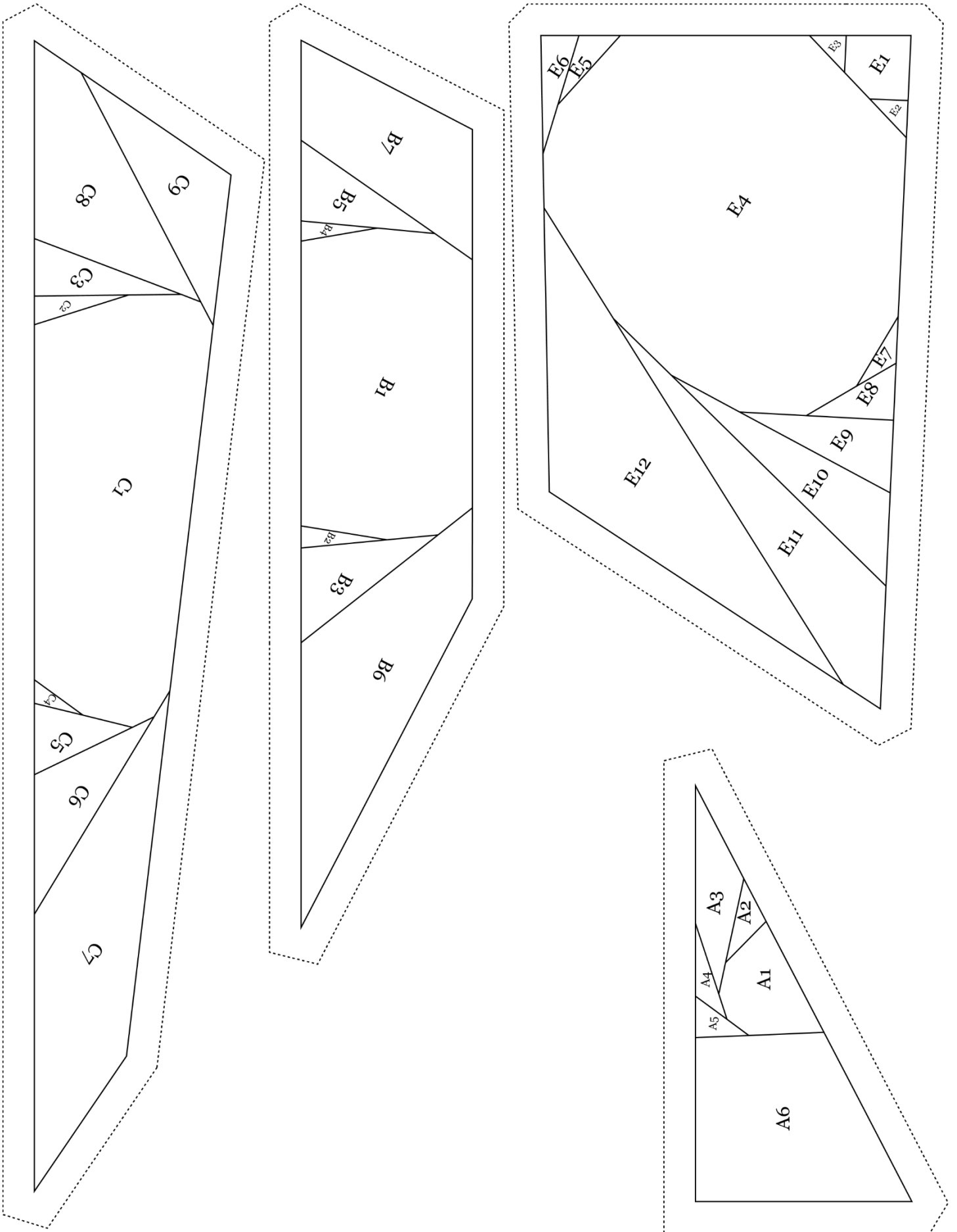
8 x 8

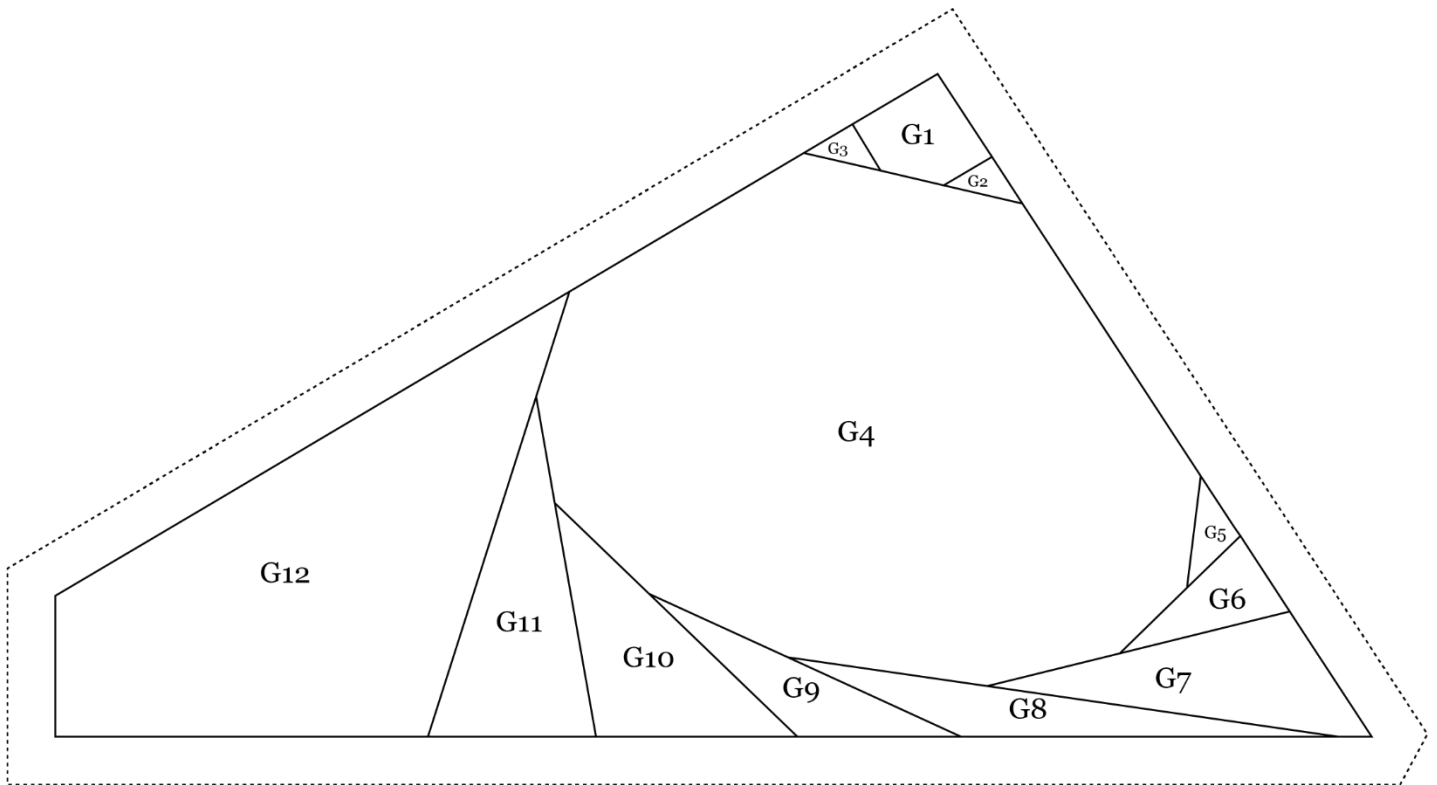
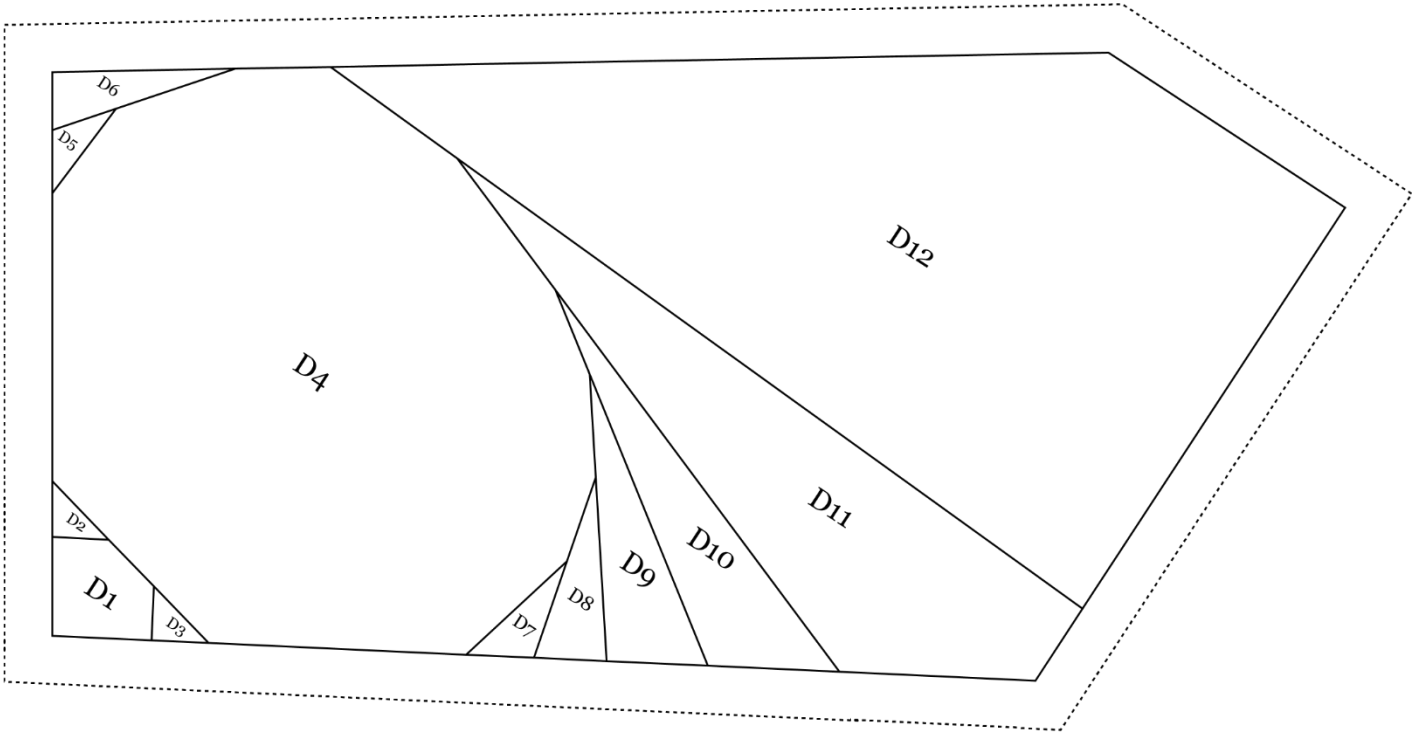


8 x 8

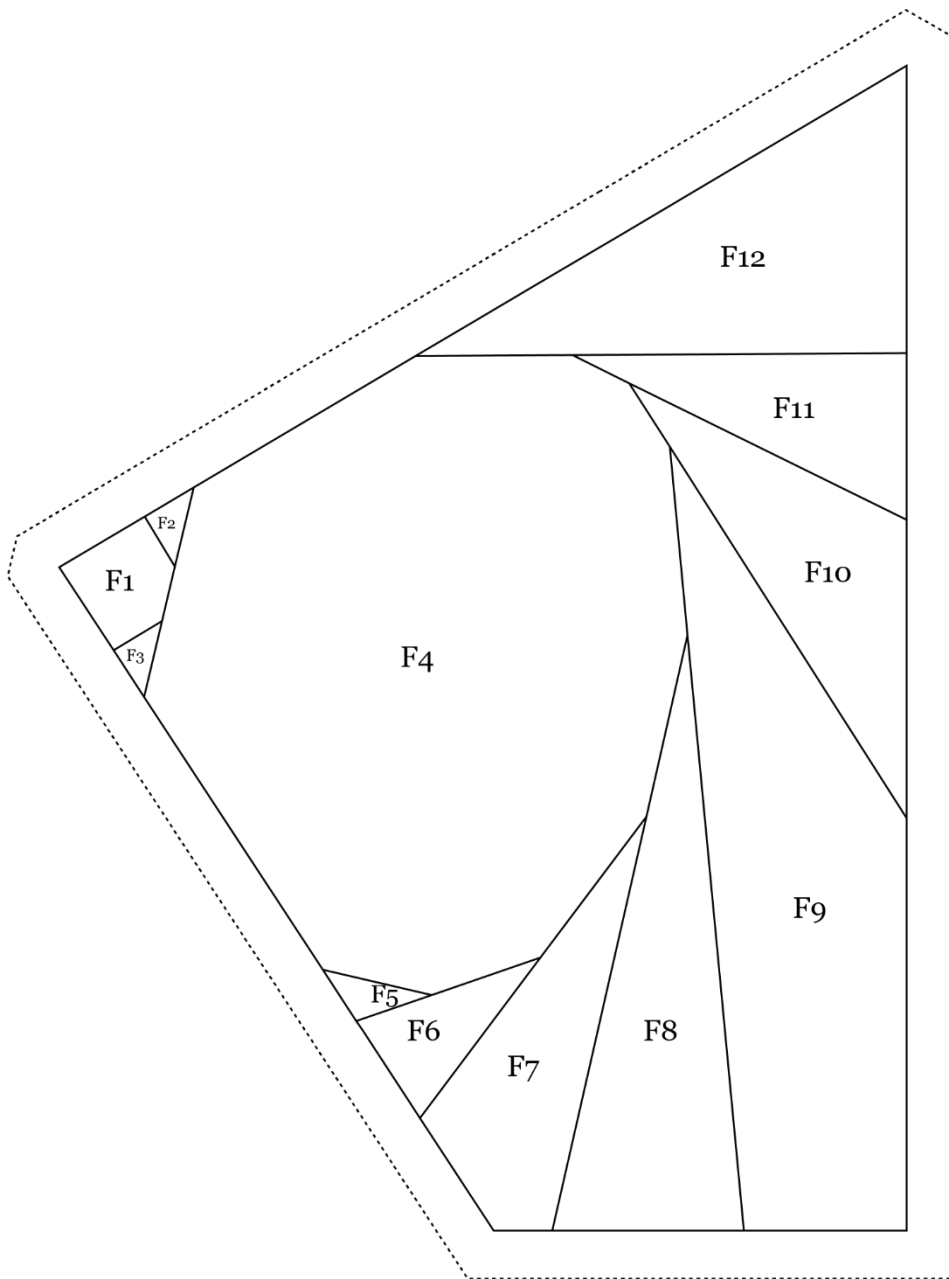


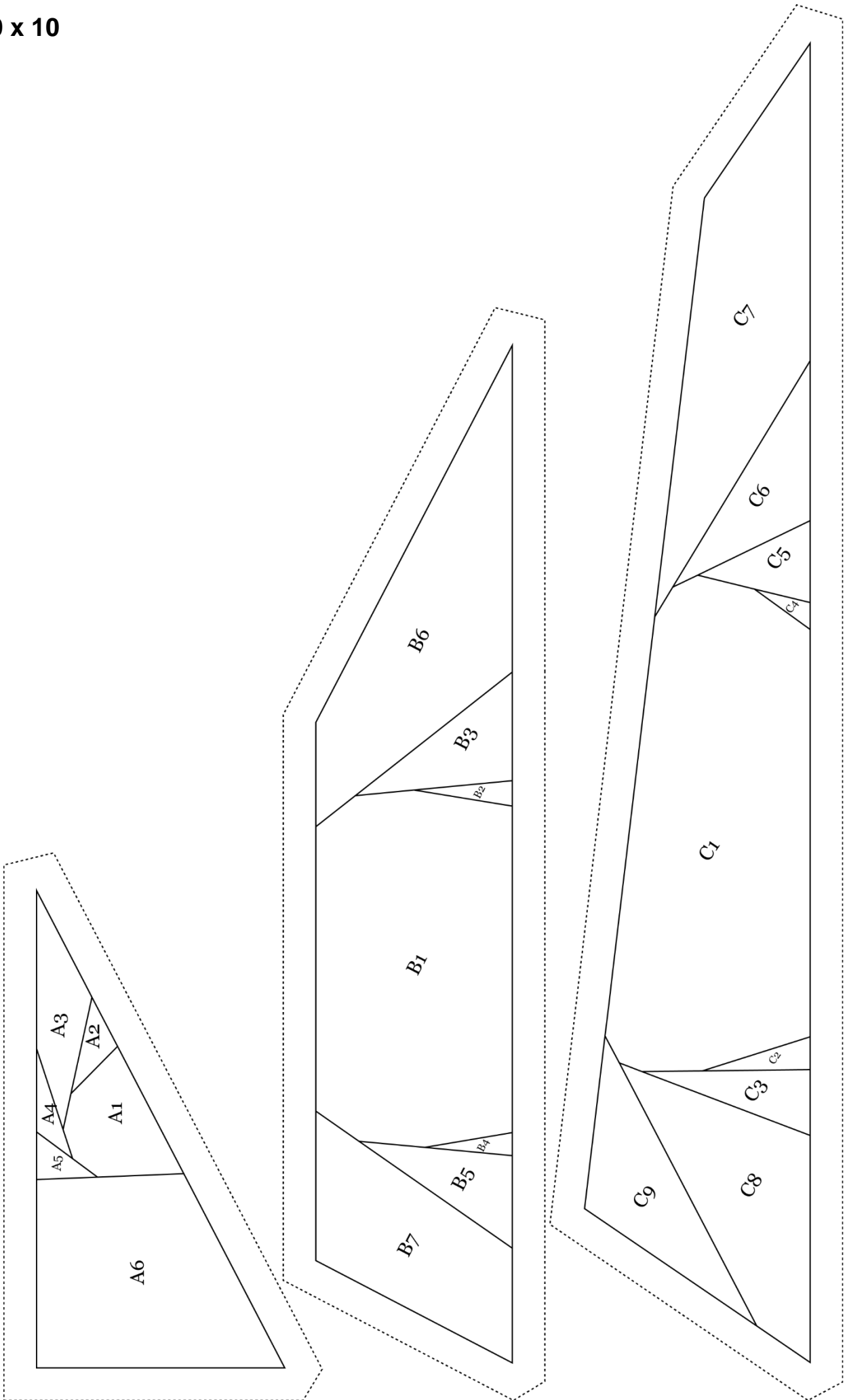
9 x 9



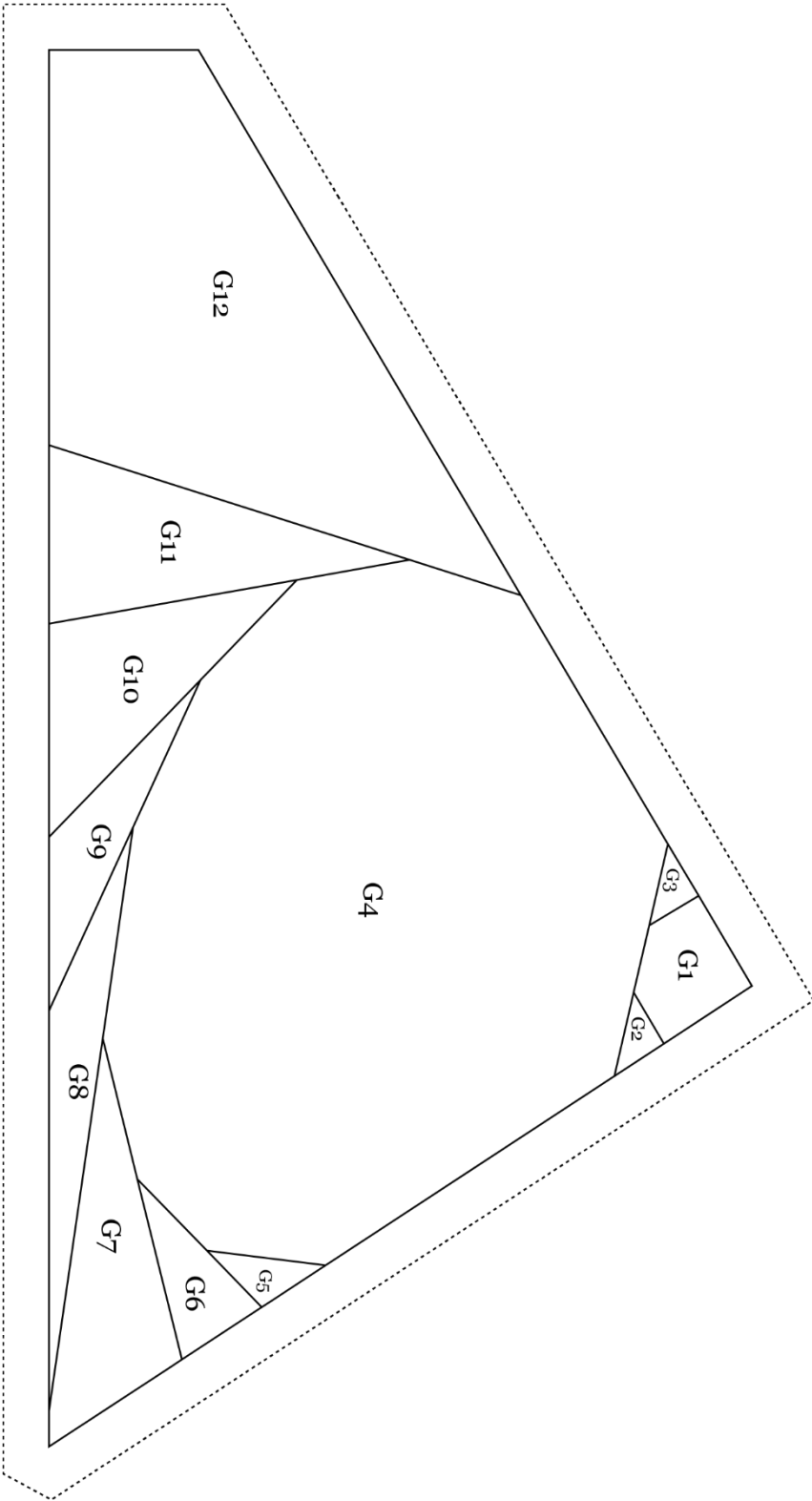


9 x 9





10 x 10



10 x 10

