



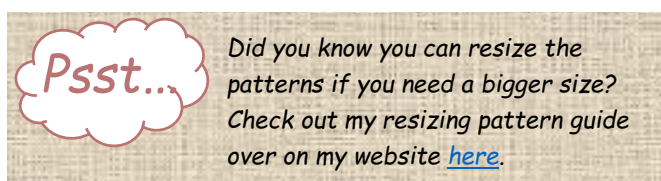
Pride Flag



4 Sizes

Thank you for downloading this pattern, I really hope you enjoy making it and have fun when choosing your fabrics.

There are several sizes included, and each size includes a ¼" seam allowance when complete.



This pattern pack does not include instructions on how to paper piece and assumes that you are already experienced in foundation paper piecing.

If you are new to paper piecing, there are many tutorials on YouTube to help guide you and you can also find a [tutorial](#) with some tips and tricks over on my website. It is such an easy technique once you know the basics.

When printing the pattern, it is important to ensure there is no scaling applied and it is printed at actual size/100% on A4 Paper. A print test square is included for each pattern size that measures 1" by 1".

A colouring page is included to help plan your fabrics as well as a pattern envelope if you wish to store your pattern or gift it to a friend.

The individual sections that make up this pattern do not have colour references. This is

Pattern #FBDF00009

intentional so that you can colour them in with your colour choices before stitching.

If you have any queries or encounter any issues with this pattern, please contact me. Don't forget to share your finished blocks on social media, I would love to see your creations.

The boring bit...

This pattern is designed and intended for personal use only and may not be resold, permission is granted to sell the finished item provided the item is handmade by you and you credit Full Bobbin Designs for the design. No mass production is allowed.

Enjoy, and Happy Sewing!

Sarah♥

Contact

Email: sarah@fullbobbindesigns.com

Website: www.fullbobbindesigns.com

 [@fullbobbindesigns](#)  [@fullbobbindesigns](#)

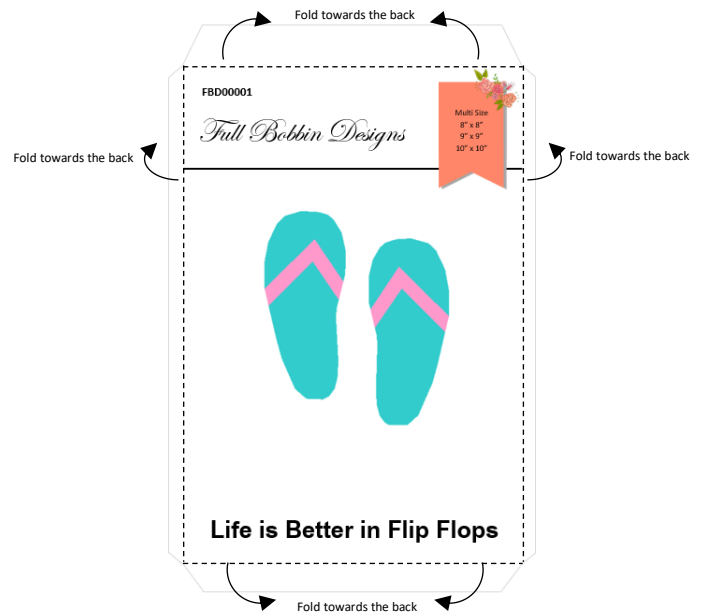
 [@Fullbobbindesigns](#)  [@FullBobbins](#)

Contents

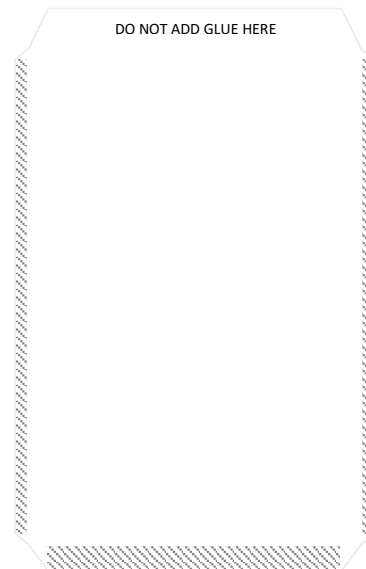
Contents	2
Assembling the Pattern Sleeve	3
Joining the Pattern Pieces	4
Pattern Sleeve Template.....	5
Design Page	7
Assembling the Block.....	8
6 x 4	9
8 x 5	10
10 x 6	11
12 x 7	13

Assembling the Pattern Sleeve

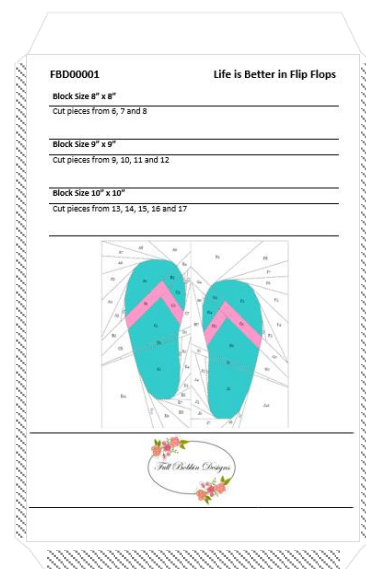
1. Cut out the front and back of the sleeve pattern along the grey lines.
2. Fold along the dashed lines towards the back, as shown in the diagram below.



3. With the front of the pattern sleeve facing down add glue only to the bottom and side sections you just folded in the previous step.



4. Place the back of the sleeve, lining it up to the folded edges and press the glued sections onto the back to secure and your pattern sleeve is complete.



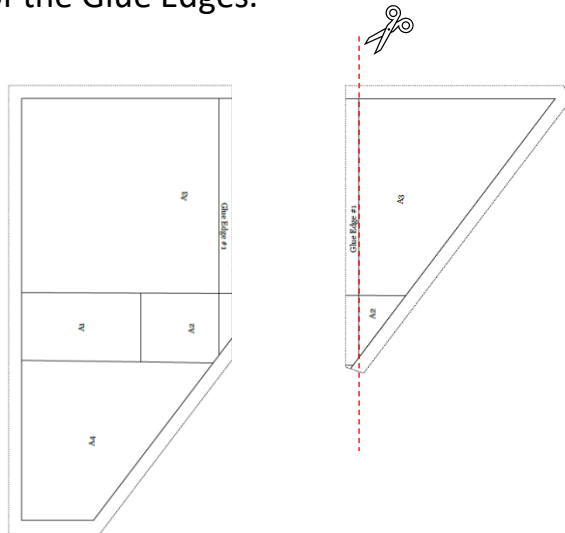
Joining the Pattern Pieces

Some patterns include sections that need to be glued together before stitching as they are too large to be printed onto 1 page.

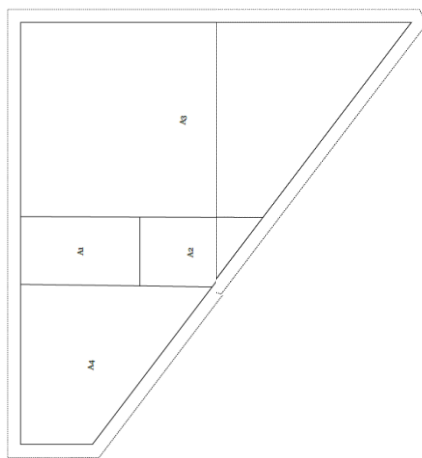
Each glue edge is numbered in sequence e.g., Glue Edge #1 should be glued to Glue Edge #1 and so on.

Once the sections are cut out you can glue or use tape to attach the sections together as follows:

1. Cut off one of the Glue Edges.



2. Next, overlap the sections so the stitch lines meet and adhere them together.



Pattern Sleeve Template

FBDF00009

Full Bobbin Designs

Multi Size

6" x 4"

8" x 5"

10" x 6"

12" x 7"



Pride Flag

FBDF00009

Pride Flag

Block Size 6" x 4"

Cut pieces from pages 9

Block Size 8" x 5"

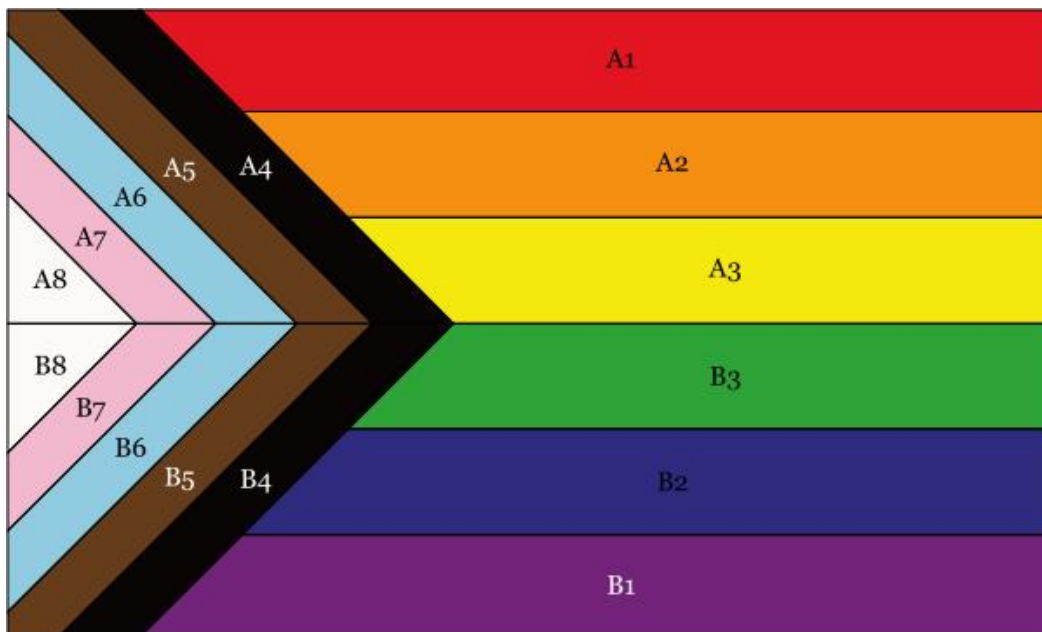
Cut pieces from pages 10

Block Size 10" x 6"

Cut pieces from pages 11 and 12

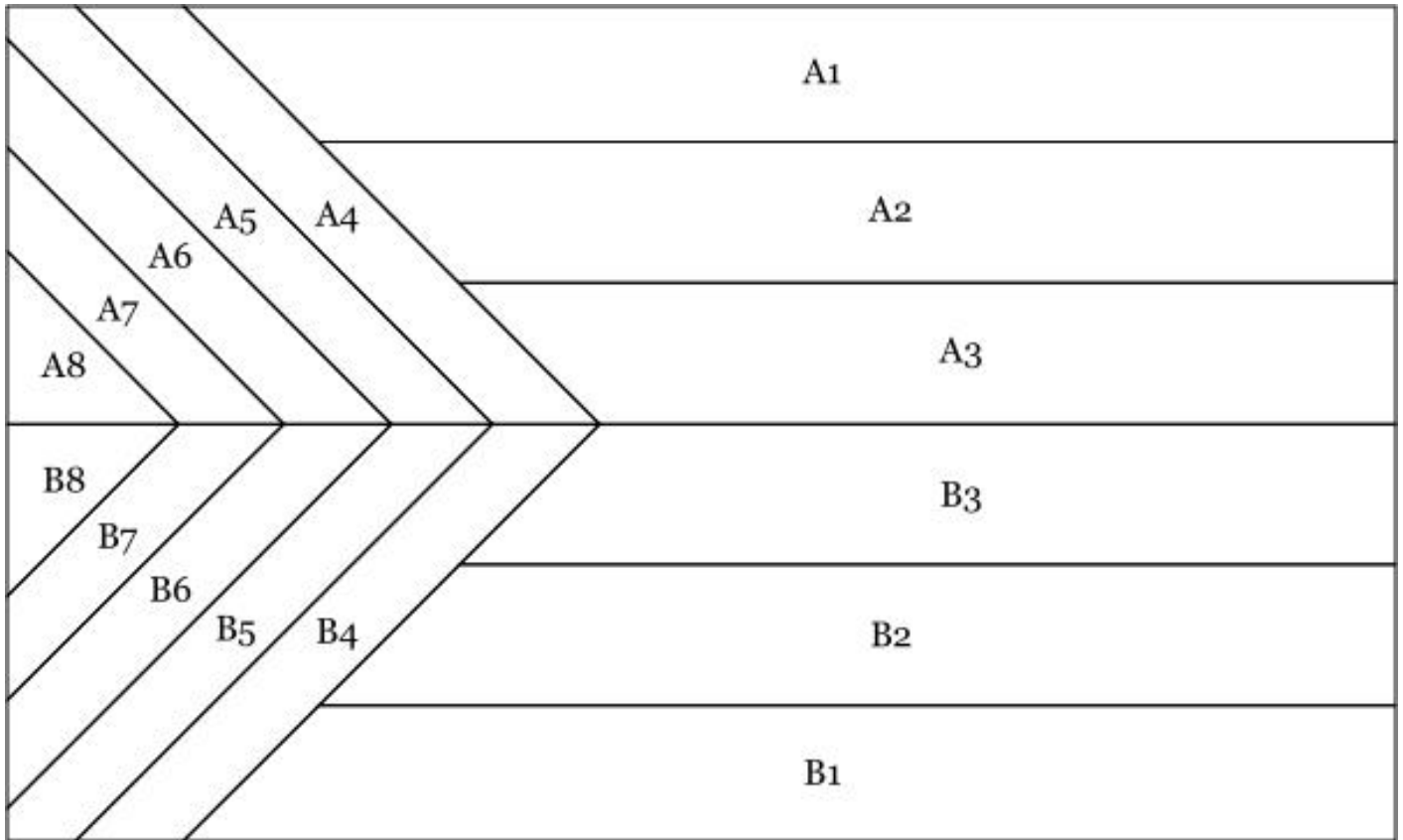
Block Size 12" x 7"

Cut pieces from pages 13, 14, 15 and 16

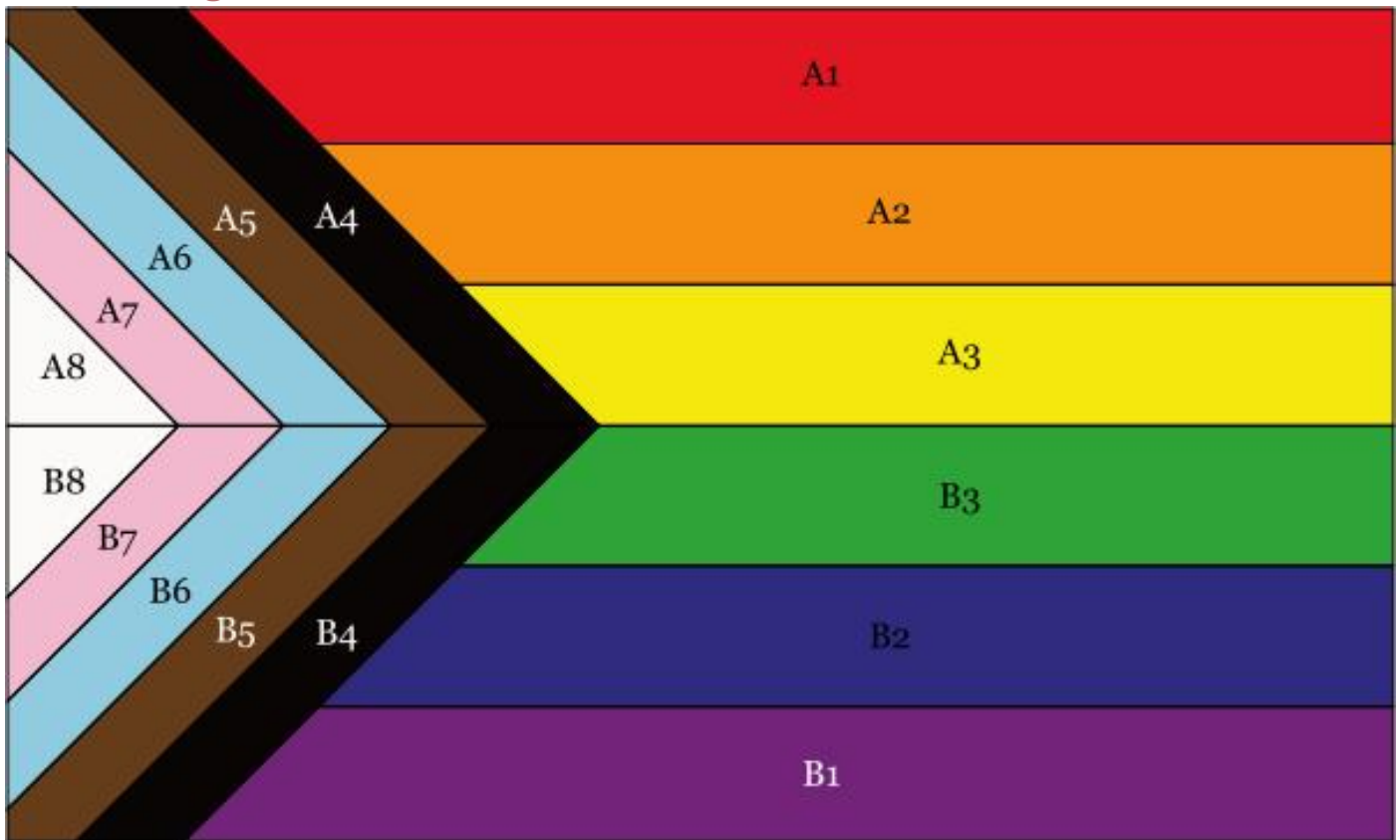


Design Page

Use this page to get creative with colour to help when choosing your fabric (*please note this page is not to scale.*)



Assembling the Block



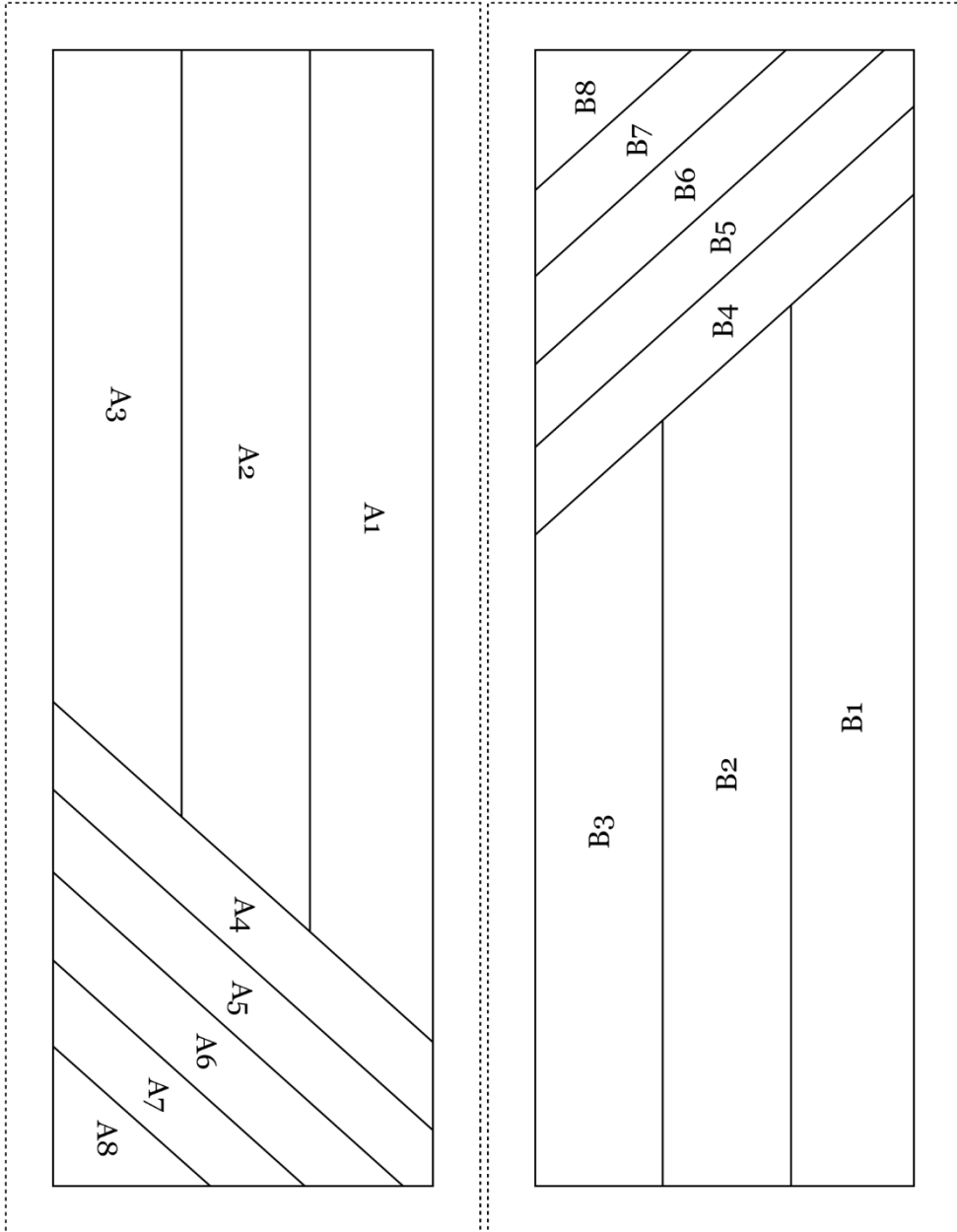
After completing the pattern sections, join them together as follows:

A to B

6 x 4

Test Square

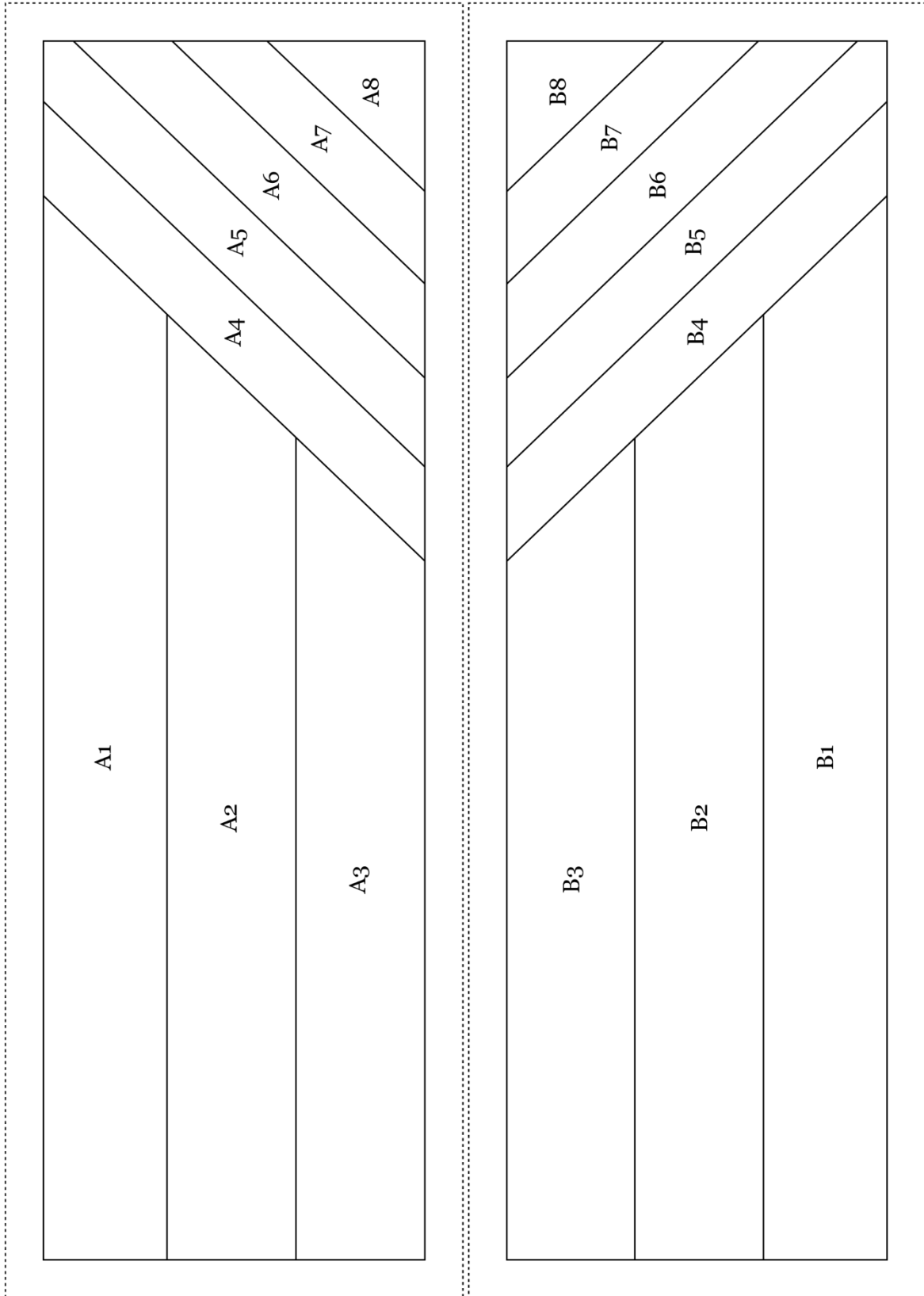
1" x 1"



8 x 5

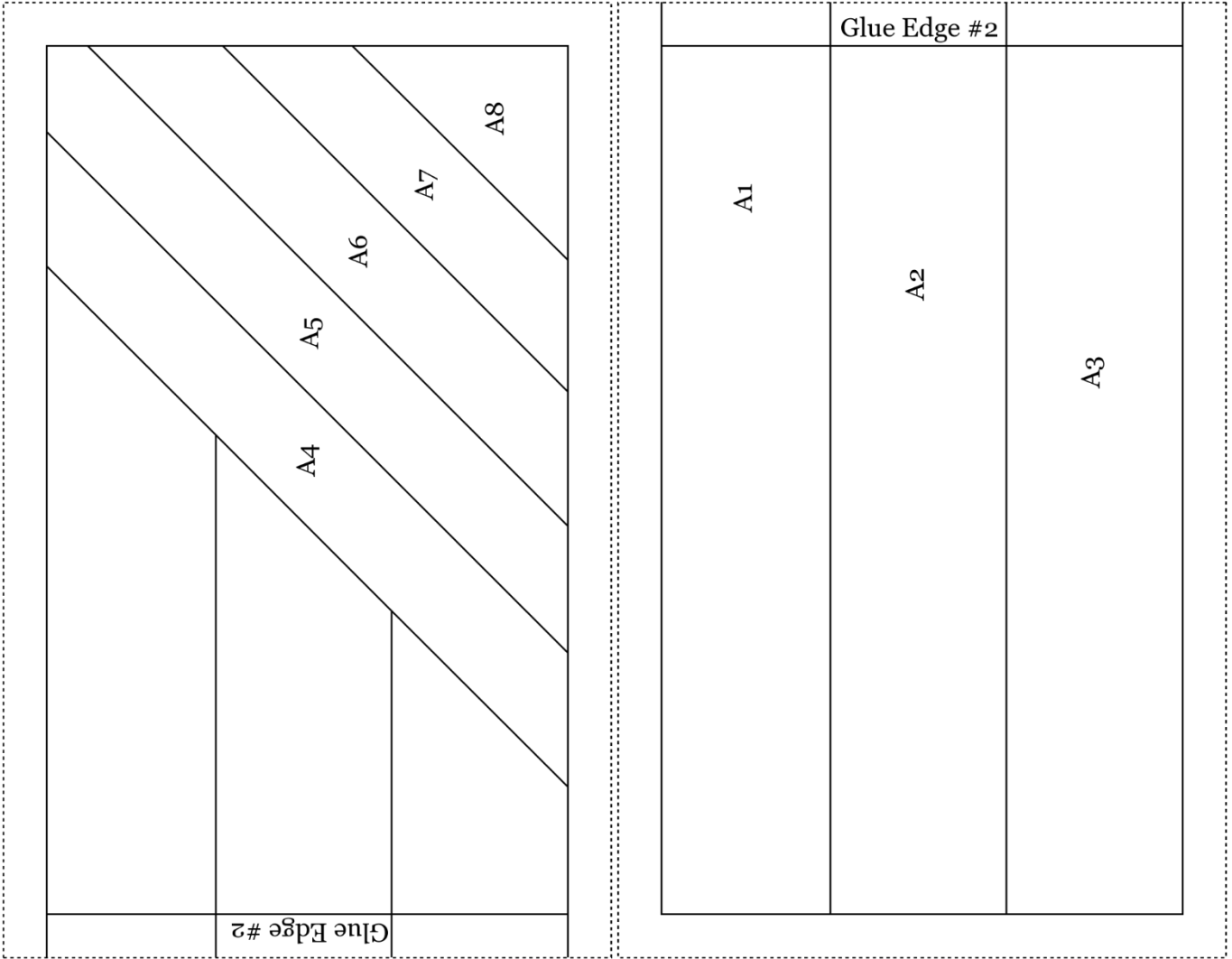
Test Square

1" x 1"

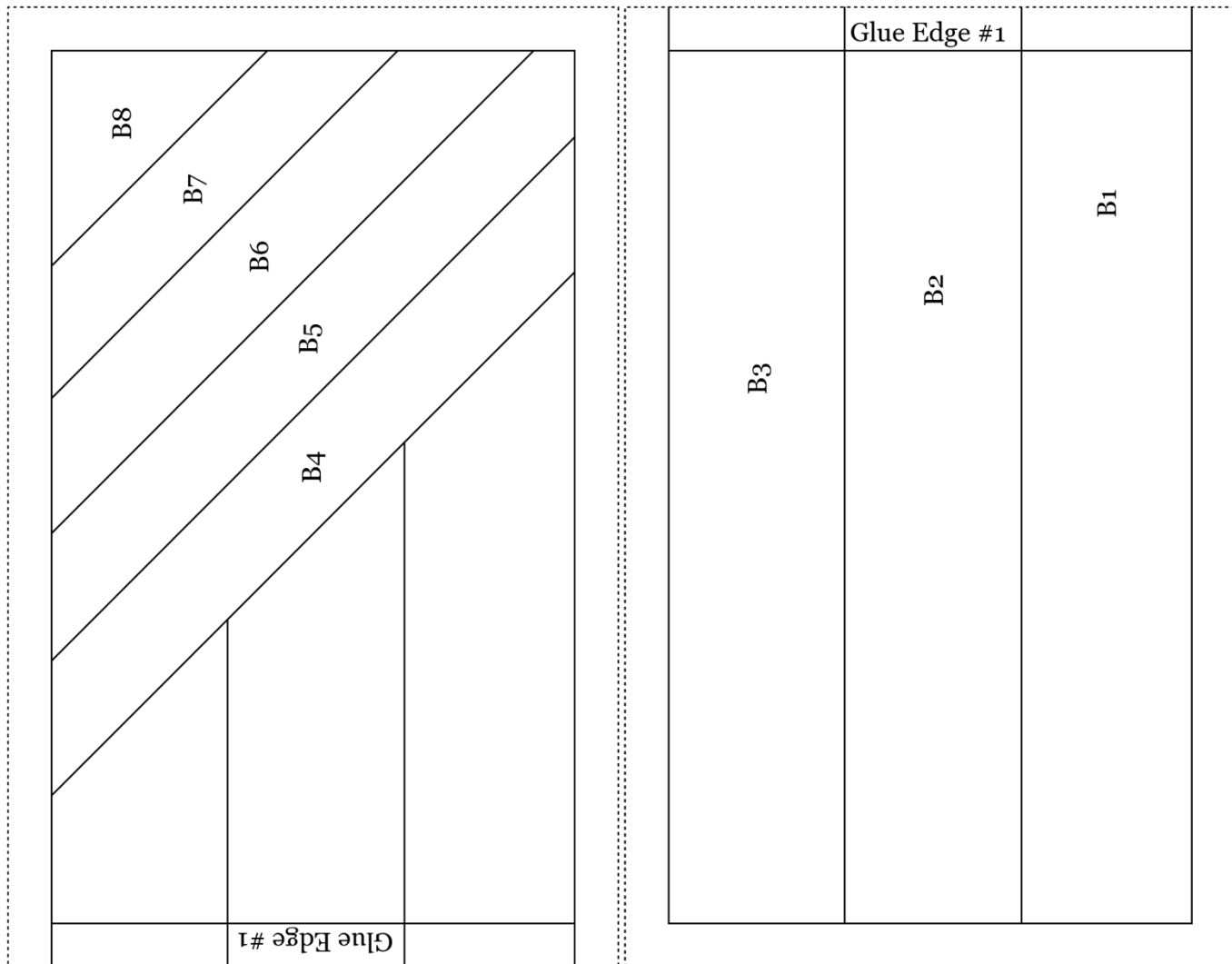


10 x 6

Test Square
1" x 1"

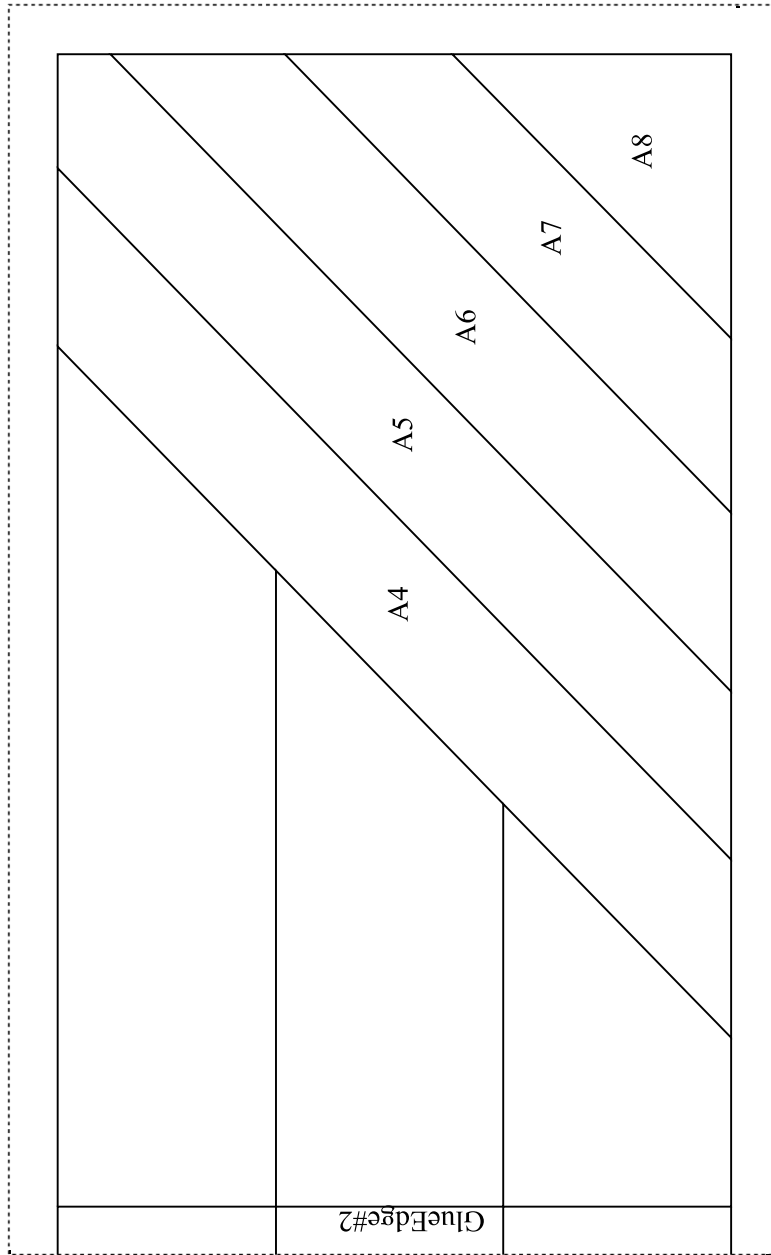


10 x 6

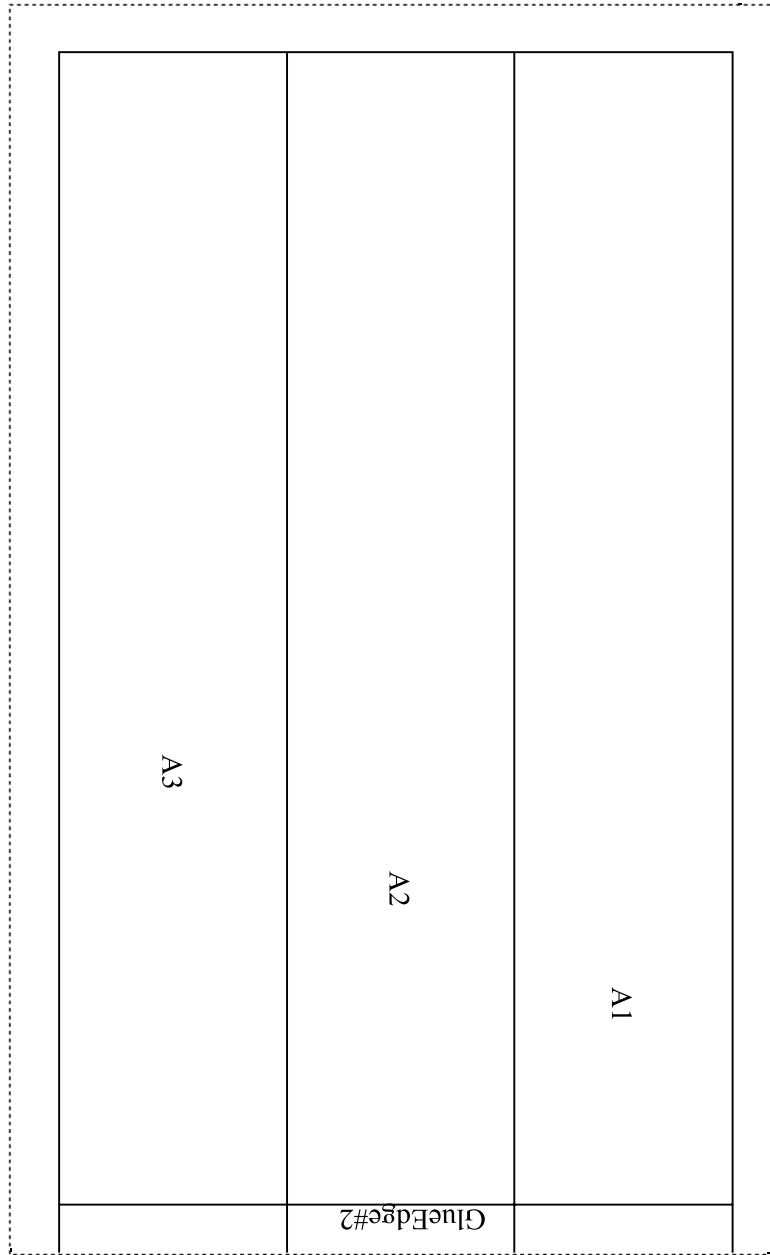


12 x 7

Test Square
1" x 1"



12 x 7



12 x 7

	Glue Edge #1	
B3	B2	B1

12 x 7

