



Sativa Wellness Poland Sp. z o.o.  
Bukowa 2 Street  
26-026 Biczka Poland  
e-mail: office@voyagercann.com  
tel. +48 570 258 000

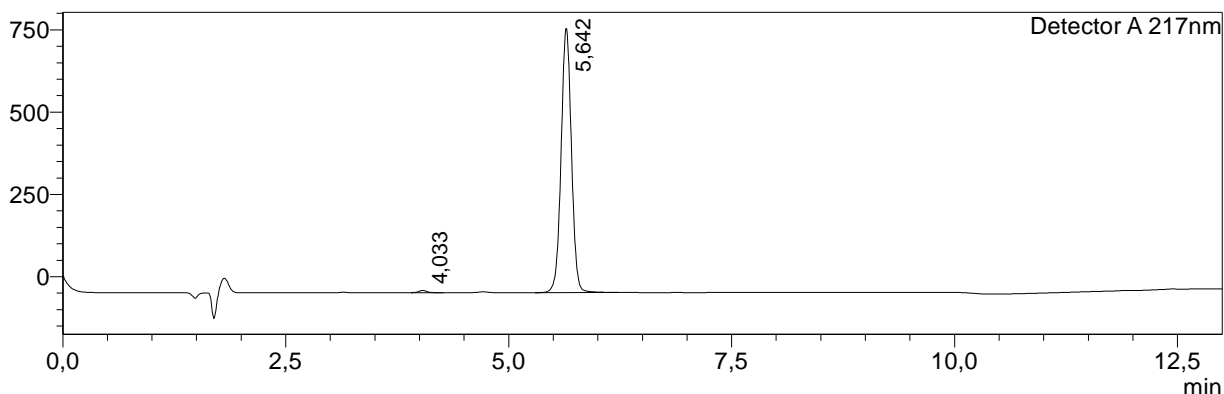
# Certificate of Analysis

## <Sample Information>

Sample Name : Phyte Club CBD MCT oil 25%  
Sample ID : N25\_052023  
Data Filename : Phyte Club CBD MCT oil 25%\_15.05.2023\_002.lcd  
Method Filename : Cannabinoids\_quantification\_backup\_1.lcm  
Batch Filename : 2.lcb  
Vial # : 1-4  
Injection Volume : 5 uL  
Date Acquired : 15.05.2023 14:51:28  
Date Processed : 22.05.2023 12:06:27

## <Chromatogram>

mV



## <Quantitative Results>

### QuantitativeResult

Detector A

ID#	Name	Ret. Time	Area	Height	Conc.	Unit
1	CBDVA	--	--	--	--	%
2	CBDV	4.033	42260	6719	0.133	%
3	CBDA	--	--	--	--	%
4	CBGA	--	--	--	--	%
5	CBG	--	--	--	--	%
6	CBD	5.642	6446091	801967	25.090	%
7	CBN	--	--	--	--	%
8	d9THC	--	--	--	--	%
9	d8THC	--	--	--	--	%
10	CBC	--	--	--	--	%
11	d9THCA	--	--	--	--	%
Total			6488351	808685		

Detector A

CBD (sum)	CBG (sum)	THC (sum)
25.09	0.00	0.00

Laboratory Manager:

Piotr Bawiec PhD, Pharmacist

### Footnotes:

(-) = Not Detected, the measured value was below the detection limit of 0,01 % respectively 100 mg/kg.

For the calculations of the equivalence sums, the respective acid forms were multiplied by the factor of 0.877 to infer the equivalent amount of the neutral forms.

Method of Analysis: HPLC-UV-Vis (High Performance Liquid Chromatography). All measurement methods were calibrated and controlled with certified reference materials (CRM). The measurements with HPLC were carried out strictly according to the validated method.

This Certificate of Analysis may only be reproduced in its entirety and not in parts. Any change to this document is liable to prosecution.