



Sativa Wellness Poland Sp. z o.o.
Bukowa 2 Street
26-026 Biczka Poland
e-mail: office@voyagercann.com
tel. +48 570 258 000

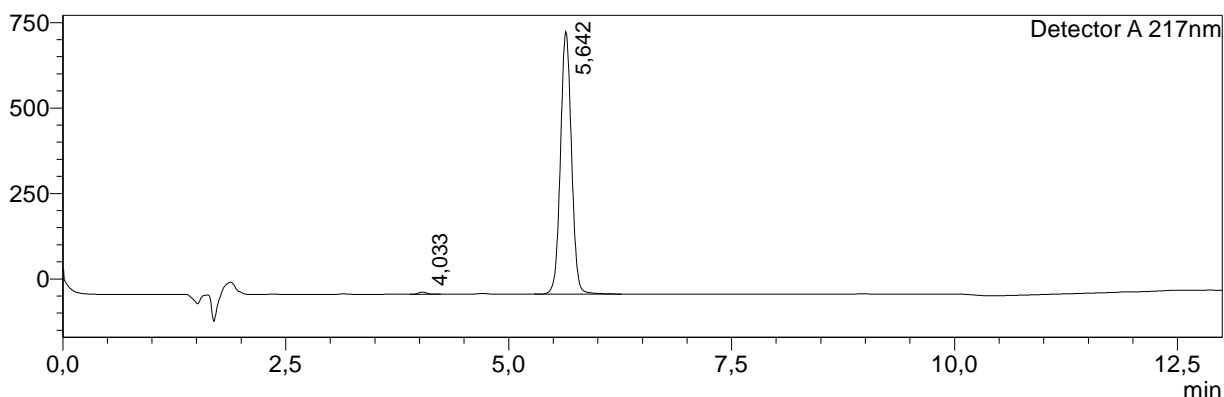
Certificate of Analysis

<Sample Information>

Sample Name : Phyte Club CBD MCT oil 15%
Sample ID : N15_052023
Data Filename : Phyte Club CBD MCT oil 15%_15.05.2023_002.lcd
Method Filename : Cannabinoids_quantification_backup_1.lcm
Batch Filename : 1.lcb
Vial # : 1-2
Injection Volume : 10 µL
Date Acquired : 15.05.2023 12:30:09
Date Processed : 15.05.2023 13:05:42

<Chromatogram>

mV



<Quantitative Results>

QuantitativeResult

Detector A

ID#	Name	Ret. Time	Area	Height	Conc.	Unit
1	CBDVA	--	--	--	--	%
2	CBDV	4,033	43763	6313	0,083	%
3	CBDA	--	--	--	--	%
4	CBGA	--	--	--	--	%
5	CBG	--	--	--	--	%
6	CBD	5,642	6597343	768187	15,607	%
7	CBN	--	--	--	--	%
8	d9THC	--	--	--	--	%
9	d8THC	--	--	--	--	%
10	CBC	--	--	--	--	%
11	d9THCA	--	--	--	--	%
Total			6641107	774500		

Detector A

CBD (sum)	CBG (sum)	THC (sum)
15,61	0,00	0,00

Laboratory Manager:

Piotr Bawiec PhD, Pharmacist

Footnotes:

(-) = Not Detected, the measured value was below the detection limit of 0,01 % respectively 100 mg/kg.

For the calculations of the equivalence sums, the respective acid forms were multiplied by the factor of 0.877 to infer the equivalent amount of the neutral forms.

Method of Analysis: HPLC-UV-Vis (High Performance Liquid Chromatography). All measurement methods were calibrated and controlled with certified reference materials (CRM). The measurements with HPLC were carried out strictly according to the validated method.

This Certificate of Analysis may only be reproduced in its entirety and not in parts. Any change to this document is liable to prosecution.