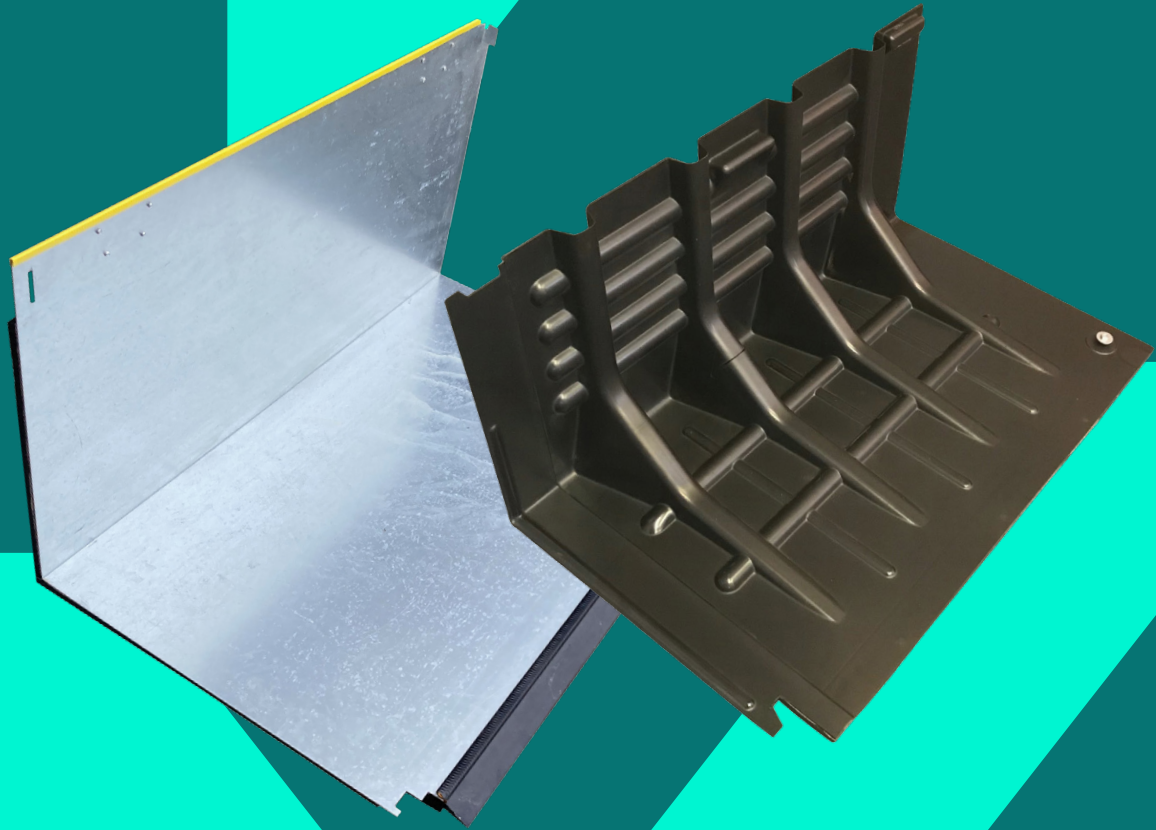


Flood Barrier Solutions



Contents

About Emtez	4
Why Invest in Emtez Flood Barriers?	8
What is Floodstop?	10
0.5m High Floodstop	12
FL-FS050	
FL-FS050M	
FL-FS050K	
0.65m High Floodstop	16
FL-FS065	
FL-FS090LK	
0.9m High Floodstop	20
FL-FS090	
FL-FS090M	
FL-FS090K	
What is FloodFence™?	24
FloodFence Lightweight™	26
FL-QFLS	
FL-QFLC	
FL-QFLWL	
FL-QFLWR	
FloodFence Heavyweight	30
FL-QFHS	
FL-QFHC	
What is QuarantineFence?	32
QuarantineFence Lightweight	34
FL-QFLPA	
Quarantinefence Heavyweight	35
FL-QFHPA	

Industry leading flood defence innovations

Emtez is a globally recognised manufacturer and supplier of safety and storage solutions for environments including the industrial, commercial, military, and education sectors.

We have recently made Fluvial Innovations a member of the Emtez group. Emtez is bringing the innovative solutions you may be familiar with into the Emtez product range.

Founded in 2006, Fluvial Innovations' goal was to create effective flood defence solutions due to sandbag solutions being completely ineffective against devastating floods. Since then Fluvial Innovations has continued to bring new award winning technology-led flood defence products to the market. Now a part of the Emtez group we will continue bringing innovation to the flood defence industry.

Collaborate with our project leads to design a product tailored around your operational needs. Work with our engineers to take your concept from pencil sketch to pioneering solution. Benefit from the expertise of our design specialists to ensure every product adheres to the highest European standards regarding safety, quality, compliance, and sustainability.

Because when it comes to floods we are committed to providing the best solution for your needs.

**Safer. Cleaner.
For Tomorrow's World.**

Emtez: setting the standard with technical expertise and certified manufacturing

At Emtez, our commitment to quality, safety, and the environment is at the core of our operations. We take pride in the fact that more than 80% of our products are expertly designed, engineered, and manufactured in-house. And, to ensure top-tier quality and safety for our valued customers, we exclusively source premium European materials.

Each product we create undergoes a comprehensive lifecycle analysis program. This program commences with the efficient procurement of raw materials, incorporates environmental considerations throughout the manufacturing process, and includes responsible waste recycling practices.

We rigorously enforce stringent measures to prevent any harm or contamination of local land and aquatic environments. And continuously enhance our occupational health and safety standards, holding certifications such as ISO 9001, ISO 14001, and ISO 45001.

Emtez is fully committed to not only delivering exceptional products but also safeguarding the world we call home.



Why Invest in Emtez Flood Barriers?

The original inspiration for Fluvial Innovations was the Lewes & Uckfield floods of 2000. Many properties were damaged due to sandbag flood barriers being utterly ineffective against flooding. For nearly two decades Fluvial Innovations has been delivering dependable flood barrier solutions.

Flood and environmental experts have expressed that sand bag flood barriers are ineffective against preventing flood damages. This is quite evident when flood water is seen rising beyond sand bag barriers.

A common problem with sand bag flood barriers is they cannot be reused once deployed, which greatly increasing costs. Another pitfall for sand bag solutions is how slow the filling and deploying process is.

Emtez flood barriers solve the common issues found in conventional flood barrier solutions. Our range is suitable for home, council and commercial use.

Our award winning flood barrier range consists of Floodstop, FloodFence™ and QuarantineFence. Each range is designed to fulfil specific flood requirements while retaining the same core characteristics. These core characteristics are:

- 7 Reusable and recyclable
- 7 Cost effective
- 7 Quick and easy deployment

Since 2007, Fluvial Innovations has supplied an excess of 10 miles of flood barriers to hundreds of customers in the United Kingdom.

We offer a free CAD deployment plan service to ensure your requirements are met.

Flood barrier awards

2009

Emergency Planning Society's most innovative product of the year (Floodstop)

2013

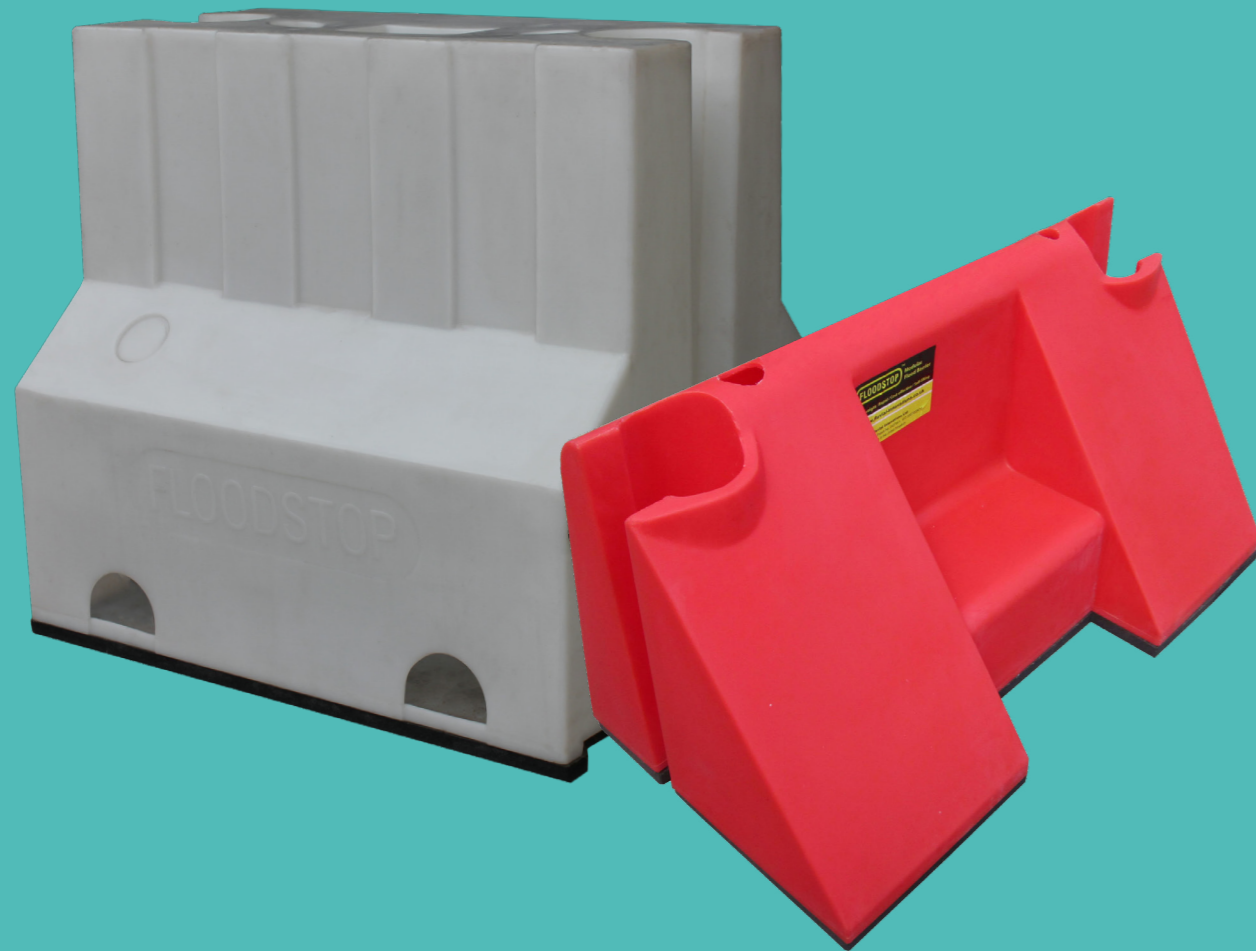
Winner of Climate Week - Best climate ready initiative

2018

Awarded the Queen's award for Enterprise: Innovation



Floodstop



Floodstop: the flexible flood barrier system

Introducing the Emtex Floodstop system – a modular flood barrier system for protection from flooding.

The Floodstop flood barrier can be rapidly deployed by one or two persons. Any length of barrier can be assembled by connecting up the modular units with the connection key. Half the modular units will automatically fill with the rising flood waters, the other half are pre-filled with water ensuring a secure and robust system Floodstop is available in different heights to fit your needs - 0.5m, 0.65m, 0.9m.

The ideal solution for

Perfect for household, business, commercial and utility flood protection. Floodstop can be as temporary and as a permanent solution.

Other advantages to mention:

- 7 Reusable and recyclable
- 7 Unaffected by strong winds when deployed
- 7 Units nest for easy storage
- 7 Can be used as leverage to gain flood insurance

How does floodstop work?

Assemblies consist of modular units secured by connection keys. Multi-hubs can be added to make acute turns or connect to walls. The pre-filled units create a ballast, securing the assembly in place.

The modular design allows for a wide range of configurations of flood barriers. Each component is gasket sealed to help prevent unwanted seepage. Self filling units fill up with the flood water and self empty when the flood water recedes, making them light enough to be carried away.



Emtez Floodstop | 0.5m High

What sets the 0.5m high Floodstop apart?

180m of 0.5m Floodstop can be deployed in 90 minutes.

A 0.5m multi-hub can be added to the assembly to connect to walls and make sharp turns.

- 7 Ideal for floods below 0.5m depth (freeboard required)
- 7 Quick deployment
- 7 Reusable
- 7 Not affected by strong winds
- 7 Self balancing
- 7 No bolting required
- 7 Self-filling and emptying units
- 7 Cost effective
- 7 Can be assembled by one person

*Ideal terrain is flat and hard surfaces. Not recommended for use on gravel.



0.5m High Floodstop Standard Unit

FL-FS050

Colour choice will be reflected in colour code



Unit Characteristics

Dimensions (W x D x H)	1000 x 500 x 500mm
Unit weight	Approx. 10kg
Unit weight with key	Approx. 23kg
Can be stacked	10 units (1200 x 1000mm pallet)
Standard colour	Red and white
Supplied in red and white alternating	
All standard units come with 1 connection key (FL-FS050K)	
Assemblies should consist of one self-filling unit and one pre-filled unit recurring.	



0.5m High Floodstop Multi-hub

FL-FS050M



Unit Characteristics

Dimensions (W x D x H) **593 x 328 x 500mm**

Unit weight **Approx. 5kg**

Standard colour **White**

Multi-hubs need to be pre-filled for deployment

Requires an additional 0.5m high connection key (Sold separately)

Wall connection requires an additional gasket (FL-FSG050M)

0.5m High Floodstop Connection Key

FL-FS050K



Unit Characteristics

Dimensions (W x D x H) **333 x 130 x 580mm**

Unit weight **Approx. 13 - 18kg**

1 handle per order supplied for easy removal (FL-FS050KH)



Emtez Floodstop | 0.65m High

What sets the 0.65m high Floodstop apart?

Standard 0.65m Floodstop units have an integrated connection key. Reducing the number of components and speeding up the deployment process. Assemblies will be secured with 0.9m lower keys.

A 0.9m high multi-hub can be added to the assembly to connect to walls and make sharp turns.

Key features

- 7 Ideal for floods below 0.65m depth (freeboard required)
- 7 Integrated connection key
- 7 Quick deployment
- 7 Reusable
- 7 Not affected by strong winds
- 7 Self balancing
- 7 No bolting required
- 7 Self-filling and emptying units
- 7 Cost effective
- 7 Can be assembled by one person

*Ideal terrain is flat and hard surfaces. Not recommended for use on gravel.



0.65m High Floodstop Standard Unit

FL-FS065

Colour choice will be reflected in colour code



Unit Characteristics

Dimensions (W x D x H)	1390 x 650 x 650mm (1195mm connected width)
Unit weight	Approx. 19kg
Can be stacked	6 units (1200 x 1000mm pallet)
Standard colour	Red and white

Supplied in red and white alternating

Assemblies should be consist of one self-filling unit and one pre-filled unit recurring.

0.65m High Floodstop Connection Key

FL-FS090LK



Unit Characteristics

Dimensions (W x D x H)	436 x 201 x 605mm
Unit weight	Approx. 15kg
1 handle per order supplied for easy removal (FL-FS090LKH)	



Emtez Floodstop | 0.9m High

What sets the 0.9m high Floodstop apart?

The 0.9m Floodstop utilises a split connection key - 1 lower and 1 upper component. This makes handling 0.9m connection keys much easier.

A 0.9m multi-hub can be added to the assembly to connect to walls and make sharp turns.

This product is popular with Utility and Construction companies.

Key features

- 7 Ideal for floods below 0.9m depth (freeboard required)
- 7 Quick deployment
- 7 Reusable
- 7 Not affected by strong winds
- 7 Self balancing
- 7 No bolting required
- 7 Self-filling and emptying units
- 7 Cost effective
- 7 Can be assembled by two people

*Ideal terrain is flat and hard surfaces. Not recommended for use on gravel.



0.9m High Floodstop Standard Unit

FL-FS090

Colour choice will be reflected in colour code

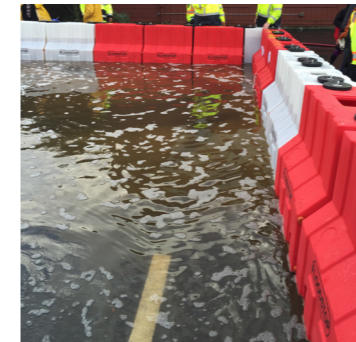


Unit Characteristics

Dimensions (W x D x H)	1000 x 500 x 500mm
Unit weight	Approx. 26kg
Unit weight with key	Approx. 61kg
Can be stacked	4 units (1200 x 1000mm pallet)
Standard colour	Red and white
Supplied in red and white alternating	

All standard units come with 1 connection key (FL-FS090K)

Assemblies should consist of one self-filling unit and one pre-filled unit recurring.



0.9m High Floodstop Multi-hub

FL-FS090M



Unit Characteristics

Dimensions (W x D x H) **720 x 402 x 900mm**

Unit weight **Approx. 18kg**

Standard colour White

Multi-hubs need to be pre-filled for deployment

Requires an additional 0.9m high connection key (Sold separately)

Wall connection requires an additional gasket (FL-FSG090M)

0.9m High Floodstop Connection Key

FL-FS090K



Unit Characteristics

Dimensions (W x D x H) **436 x 201 x 935mm**

Lower key 436 x 201 x 330mm

Upper key 436 x 201 x 605mm

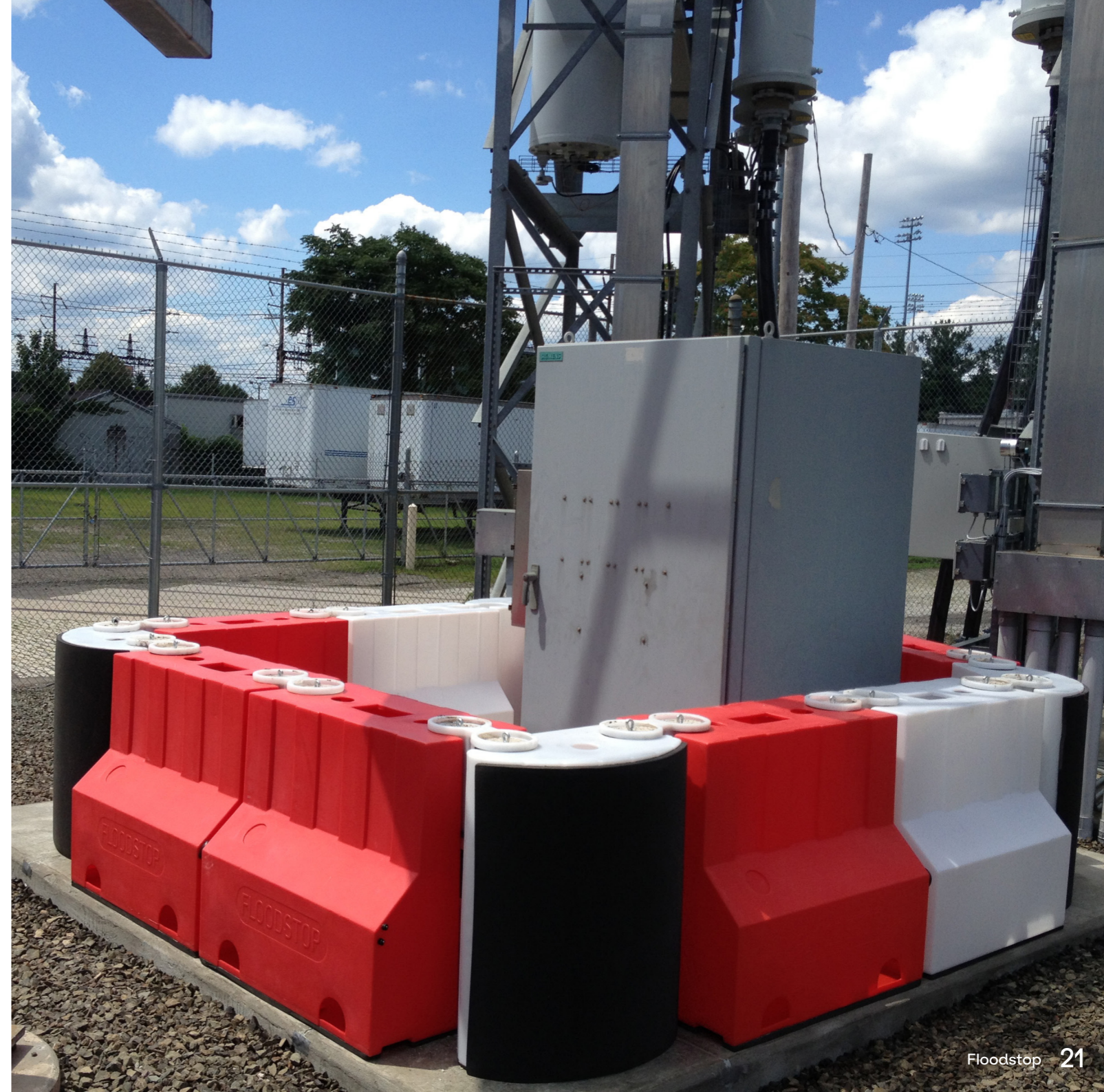
Total unit weight **Approx. 36.5kg**

Upper unit weight Upper approx. 21.5kg

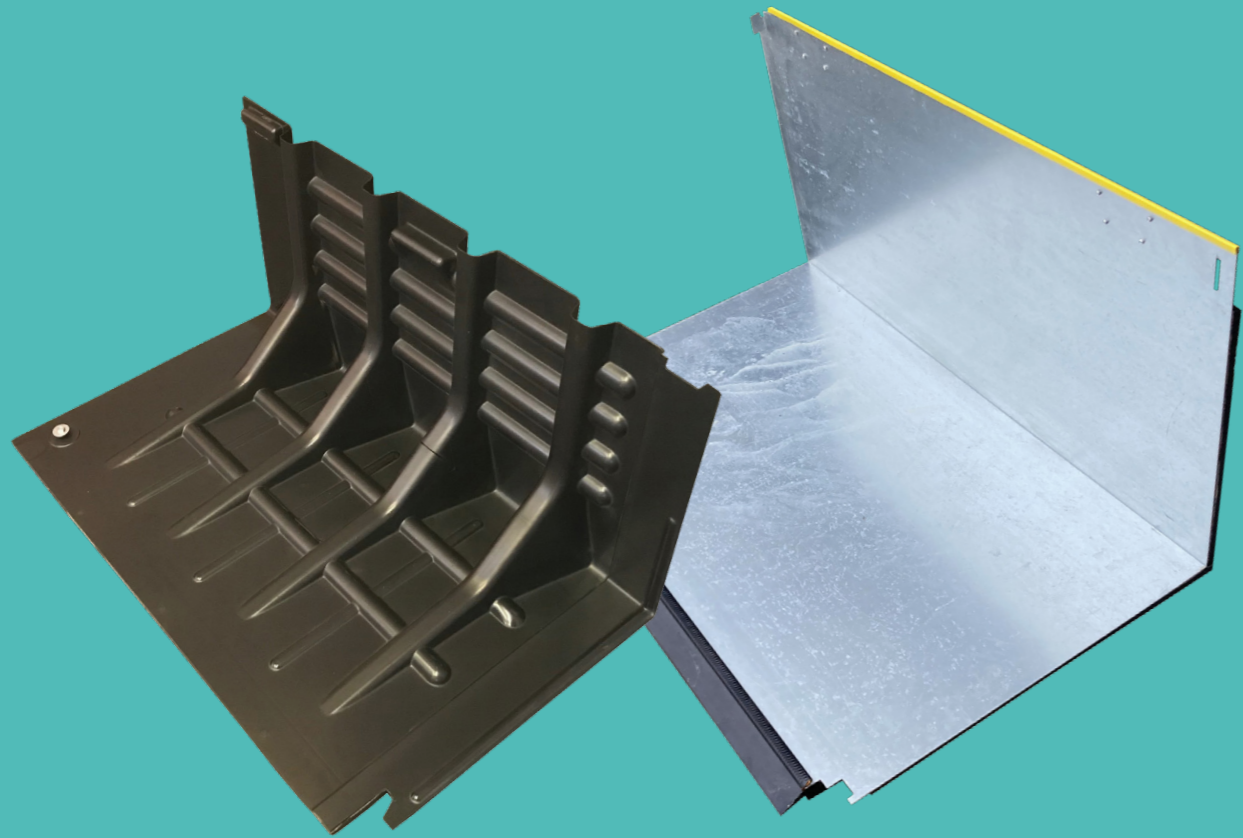
Lower unit weight Lower approx. 15kg

1 handle per order supplied for easy removal (FL-FS090LKH)

Lower unit compatible with 0.65m Floodstop (FL-FS065)



FloodFence™



The ideal solution for...

Flash floods are an issue that requires immediate and fast response. FloodFence™ combats flash flooding with its efficient, modular system. Without the need for bolting FloodFence™ assemblies can be deployed by one person in a matter of minutes. We offer two versions of FloodFence™ - Lightweight and Heavy. FloodFence™ Heavy shares the same benefits as the standard lightweight version but with suitable for larger floods and tidal application. FloodFence uses hydrostatic pressure from the water to remain in place.

Standard features include:

Quick and easy deployment

FloodFence™ utilises a self locking system which does not require any additional components or locking keys to create an assembly. Bolting assemblies is optional.

Minimal storage

The slimline form of FloodFence™ allows for nesting which greatly reducing spacial requirements for storing and shipping.

Modular design

FloodFence™ comprised of modular units, allowing the system to be deployed in various situations and spaces.

Reusable

Robust materials allow the FloodFence™ to be reused. Any compromised components should be replaced.

Lightweight

FloodFence™ units are slim and lightweight. Ranging between 4 - 20kg per modular unit. This allows for one person deployment.

EV flooding

The modular units can be assembled into a QuarantineFence. The QuarantineFence is a barrier which surrounds electric vehicles in thermal runaway or on fire. Emergency services can then fill the QuarantineFence reservoir with water and extinguish the fire.



Emtez FloodFence™ | Lightweight

What sets the Emtez FloodFence™ | Lightweight apart as the premier choice?

Not only is our battery flooding barrier exceptionally effective, but it also boasts a remarkable level of practicality. Designed with ease of use in mind, it's lightweight and easily deployable, making it the preferred choice for various emergency situations.

One of the distinguishing features of the Emtez FloodFence™ is its highly efficient storage and shipping capabilities. The collapsible design enables compact storage, facilitating easy transport to any desired location. Additionally, its reusability enhances its cost-effectiveness, ensuring optimal returns on your investment.

Key features

- 7 Great for flood diversion
- 7 Quick deployment
- 7 Reusable
- 7 Minimal storage required
- 7 Self balancing
- 7 No bolting required
- 7 Cost effective
- 7 Can be assembled by one person
- 7 Submerge and extinguish lithium-ion batteries to prevent thermal runaway.

*Ideal terrain is flat and hard surfaces. Not recommended for use on gravel.



Individual Side Unit

Lightweight

FL-QFLS

Colour choice will be reflected in colour code



Side Units

Dimensions (W x D x H) **1000 x 580 x 450mm**
(0.91m connected length)

Unit weight **4kg**

Can be stacked **37 units**
(1.8m high pallet)

Available in yellow FL-QFLSY / black (FL-QFLSK)

Individual Corner Unit

Lightweight

FL-QFLC

Colour choice will be reflected in colour code



Corner Units

Dimensions (W x D x H) **490 x 611 x 450mm**

Unit weight **Approx. 4kg**

Can be stacked **24 units**
(0.8m high pallet)

Available in yellow (FL-QFLCY) / black (FL-QFLCK)

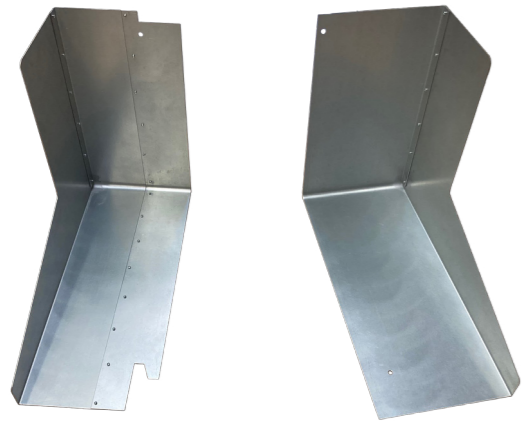
2 units can be joined together to make an outer corner using a joining pin (FL-QFLCP)

Individual Wall Units

Lightweight

FL-QFLWL

FL-QFLWR



Left Side Characteristics

Dimensions (W x D x H) **240 x 580 x 450mm**

Unit weight **Approx. 6kg**

Right Side Characteristics

Dimensions (W x D x H) **250 x 580 x 450mm**

Unit weight **Approx. 6.5kg**



Introducing the Emtex FloodFence™ | Heavyweight – your ultimate heavy-duty solution

Constructed from robust steel, the Emtex FloodFence™ | Heavyweight guarantees durability and resilience. The robust design allows the flood barrier to be used in both surface and tidal applications. Its towering height makes it suitable for a wide range of vehicles from SUVs to trucks and minivans.

Efficiency is key, which is why, just like its lightweight counterpart, the Heavyweight FloodFence™ offers exceptional storage and shipping capabilities with its collapsible design, enabling convenient transport to any location.

The system improves upon existing technology and introduces a new standard in sealing and functionality. The system can be connected and deployed rapidly.

Key benefits & applications

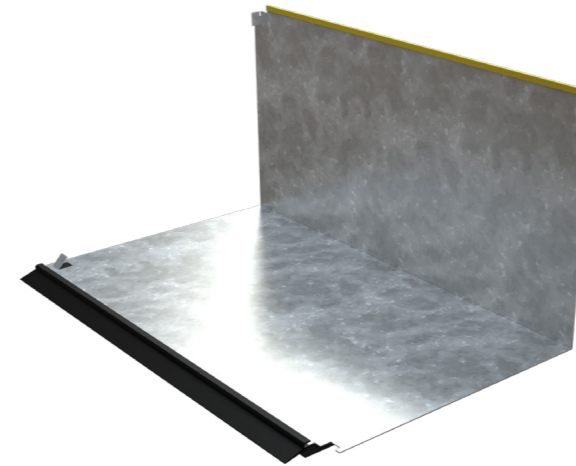
- 7 Quick and easy to deploy – just connect up the units
- 7 Minimal storage required
- 7 Robust — manufactured from galvanised metal
- 7 Each unit incorporates a unique combination of hardwearing gaskets for sealing
- 7 Submerge and extinguish lithium-ion batteries to prevent thermal runaway
- 7 Suitable for tidal applications
- 7 Can be assembled by one person
- 7 Reusable



Individual Side Unit

Heavyweight

FL-QFHS



Side Units

Dimensions (W x D x H) **1000 x 600 x 500mm**
(0.95m connected length)

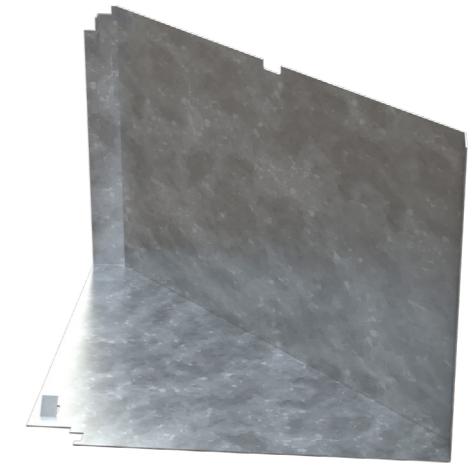
Unit weight **20kg**

Final product may slightly differ.

Individual Corner Unit

Heavyweight

FL-QFHC



Corner Units

Dimensions (W x D x H) **650 x 650 x 500mm**

Unit weight **Approx. 11kg**

Quarantine Fence



Diving into safety: innovative battery flooding barrier for EV battery fire prevention

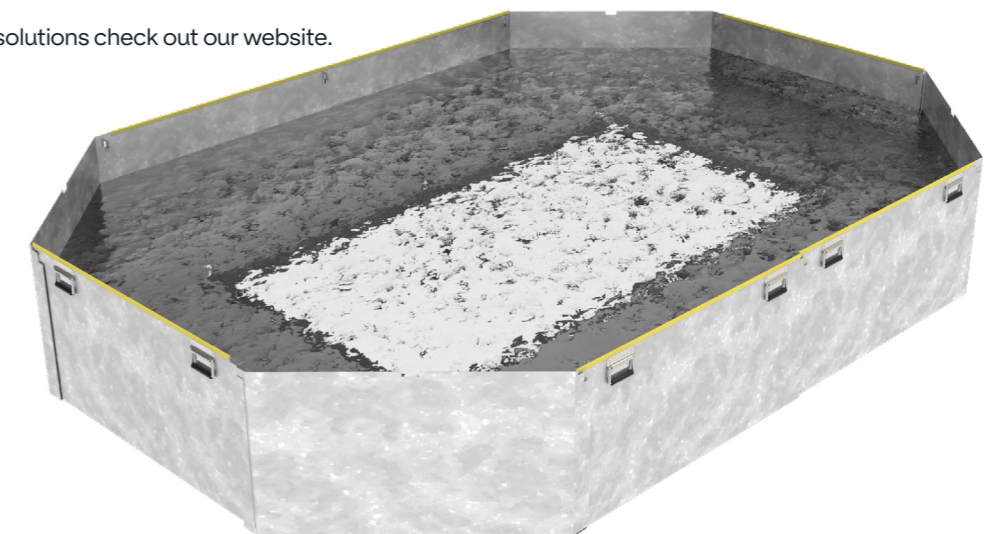
This battery flooding barrier is a cutting-edge and versatile solution for submerging electric vehicle (EV) batteries in the event of thermal runaway or even a fire.

When an EV catches fire, it can burn with long-term intensity, posing significant health and safety risks. To prevent lithium battery thermal runaway and potential re-ignition, submerging the EV battery in water for an extended period is essential.

The ideal solution for...

Emtez QuarantineFence solutions stand out as the ideal choice for a wide range of essential service providers, including emergency services, local councils, supermarkets, and service stations equipped with EV charging infrastructure. Our state-of-the-art battery flooding barriers epitomise cutting-edge safety protocols. Thanks to their effortless storage and transport capabilities, you can proactively prepare for fire incidents, thereby guaranteeing the highest levels of safety and damage mitigation in these high-risk scenarios.

If you are looking for more lithium-ion solutions check out our website.



Emtez QuarantineFence

Lightweight

FL-QFLPA



Specific model features

18 x Side Units

Dimensions (W x D x H) **1000 x 580 x 450mm**
(0.91m connected length)

Unit weight **4kg**

4 x Corner Units

Dimensions (W x D x H) **490 x 611 x 450mm**

Unit weight **4kg**

Supplied black and yellow alternating.

Net weight: approx. 90kg

While the Emtez QuarantineFence | Lightweight is designed to be a reusable and robust solution for submerging electric vehicle (EV) batteries in the event of a fire, occasional damages may necessitate the replacement of certain parts. Regular maintenance and periodic replacement of damaged components ensure the continued effectiveness of this safety measure.



Emtez QuarantineFence

Heavyweight

FL-QFHPA



Specific model features

18 x Side Units

Dimensions (W x D x H) **1000 x 600 x 500mm**
(0.95m connected length)

Unit weight **20kg**

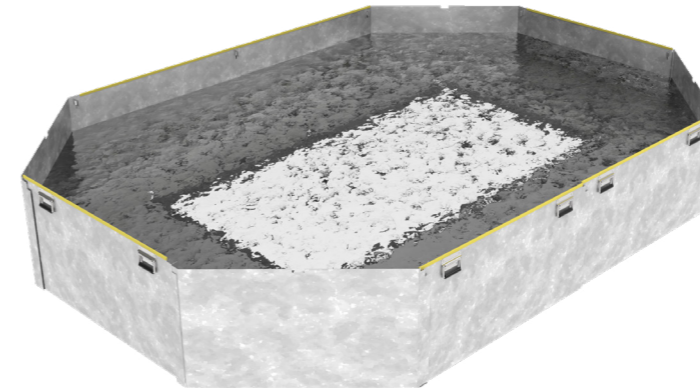
4 x Corner Units

Dimensions (W x D x H) **650 x 650 x 500mm**

Unit weight **11kg**

Net weight: approx. 400kg

The Emtez QuarantineFence | Heavyweight is designed as a reusable solution for submerging electric vehicle (EV) batteries in case of a fire. While it's highly unlikely due to its robust build, parts may occasionally need replacement due to damage. To maintain its effectiveness as a safety measure, it's essential to conduct routine maintenance and replace any compromised components when needed.

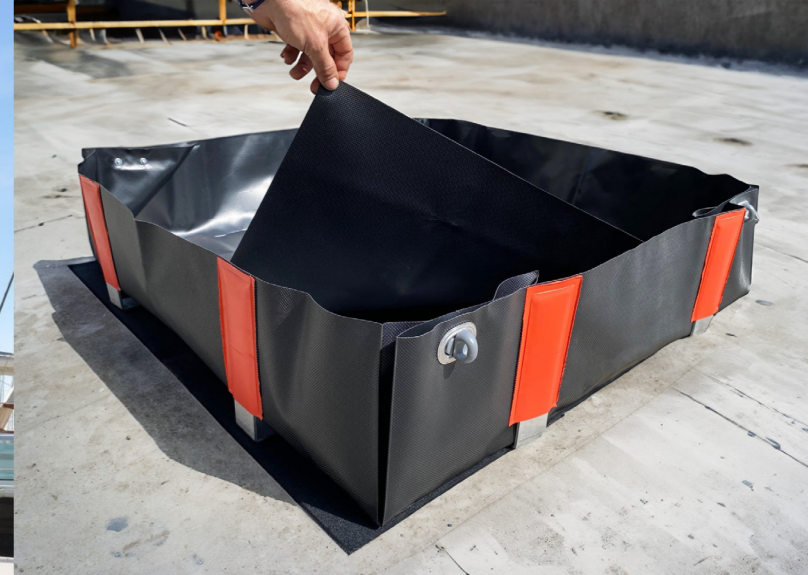


More Solutions Available on Our Website

We also manufacture a wide range water containment products. Emtez offers a large range of alternative use containment booms and berms to help combat various situations and for use in most applications. Some applications include sheltered waters, ports marinas and the open sea.

Emtez has partnered with multiple manufacturers to deliver bespoke flood barrier solutions for your various needs.

For more information enquire today at www.emtezgroup.com



How to get in touch?

Secure your business, your assets, and your people by placing an order today for the flood barrier solutions. Explore further details on our website, www.emtezgroup.com

We offer a free CAD deployment plan service for flood barrier solutions.

Emtez UK

4 Muir Rd,
Houston Industrial Estate,
Livingston,
Scotland, UK
EH54 5DR

www.emtez.co.uk
info@emtez.co.uk
+44 (0) 1506 430 309

Emtez GmbH

Hansaallee 191-193,
D - 40549 Düsseldorf
Deutschland

www.emtez.de
info@emtez.de
+49 (0) 211-53820375

Emtez Benelux

Rumbeeksegravier 166 D.
8800 Roeselare,
Belgium

www.emtez.be
info@emtez.be
+32 (0) 5 16 36 854

Delahaye Industries

Zone DIA Nantes Atlantique,
3 avenue Antoine de Saint-Exupéry,
44860 Saint-Aignan de Grand Lieu,
Nantes,
France

www.emtez.fr
info@emtez.fr
+33 24 03 23 400

Emtez Iberica

Avinguda Gaudi 12,
Polígono Industrial Sud,
Rubi 08191 (Barcelona),
España

www.emtez.es
info@emtez.es
+34 93 68 35 175

Emtez Italia

Via Podere la Vigna, 9
20019 Settimo Milanese,
Milano (MI),
Italia

www.emtez.it
info@emtez.it
+39 02 32 88 131