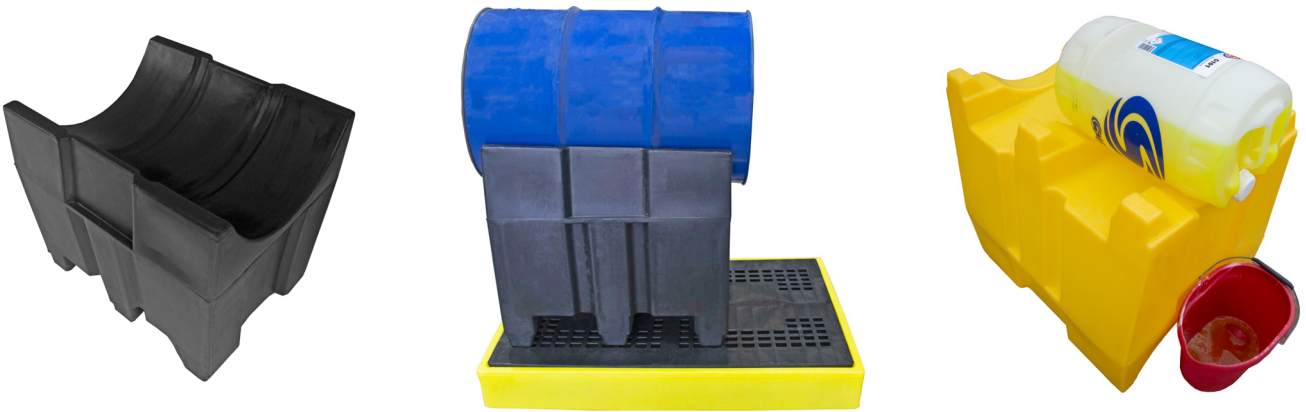


## Multi-size Drum Cradle - SBS

Rotationally moulded from polyethylene one side of this cradle is used for dispensing liquids from 205ltr drums in a horizontal position or when turned over it's used to dispense from 25ltr and/ or 50ltr drums.



### SPECIFICATION

External size	L760 x W645 x H730mm
Number of Containers	One 205ltr drum or 25 or 50ltr drums
Colour	Black & Yellow
Tare weight	10kg
UDL	250kg

