

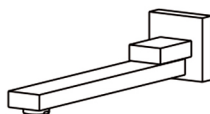
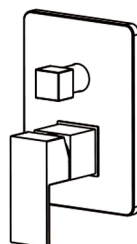
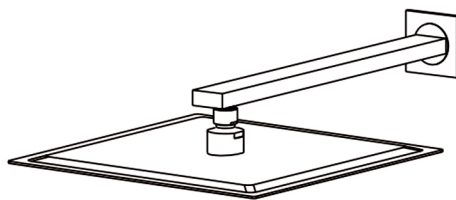


User's Manual



INSTALLATION INSTRUCTIONS

Installation Manual



RB0741

IAPMO RESEARCH AND TESTING, INC.

5001 East Philadelphia Street, Ontario, California 91761-2816 • (909) 472-4100 Fax (909) 472-4244 • www.iapmo.org



CERTIFICATE OF LISTING

IAPMO Research and Testing, Inc. is a product certification body which tests and inspects samples taken from the supplier's stock or from the market or a combination of both to verify compliance to the requirements of applicable codes and standards. This activity is required with periodic surveillance of the supplier's factory and operations as well as the assessment of the supplier's Quality Assurance System. This listing is subject to the conditions set forth in the IAPMO Research and Testing, Inc. Listing Agreement. This listing is not to be construed as any representation, assurance or guarantee by IAPMO Research and Testing, Inc. or the product acceptance by Authorized Listing Jurisdiction.

Effective Date: August 2013 Void After: August 2014
Product: Plumbing Fixture Fittings File No. 8737
Issued To: Kaiping Heart Cartridge Co., Ltd.
No. 28 Heiluan Dong Road,
Shilou Town,
Kaiping City, GUANGDONG
China

Identification: Plumbing supply fittings complying with this Standard shall be marked with the manufacturer's recognized name, trademark, or other mark or, in the case of private labeling, the name, trademark or other mark of the customer for whom the fitting was manufactured. The marking shall be accomplished by use of a permanent mark or by placing a permanent label on the product. Markings on plumbing supply fittings shall be visible after installation.

Single-handle, single-control, and automatic compensating mixing bath and shower valves shall have identifiable temperature control settings in which the settings are indicated by words ("cold", "warm", "hot", etc.), by numbers, or graphically.

Packages shall be marked with the manufacturer's name, trademark, or other mark as well as the model number or, in the case of private labeling, the name, trademark, or mark of the customer for whom the fitting was manufactured as well as the model number.

David McHenry
Chairman, Product Certification Committee

Ross Cheney
CEO, The IAPMO Group



IAPMO RESEARCH AND TESTING, INC.

5001 East Philadelphia Street, Ontario, California 91761-2816 • (909) 472-4100 Fax (909) 472-4244 • www.iapmo.org



CERTIFICATE OF LISTING

IAPMO Research and Testing, Inc. is a product certification body which tests and inspects samples taken from the supplier's stock or from the market or a combination of both to verify compliance to the requirements of applicable codes and standards. This activity is required with periodic surveillance of the supplier's factory and operations as well as the assessment of the supplier's Quality Assurance System. This listing is subject to the conditions set forth in the IAPMO Research and Testing, Inc. Listing Agreement. This listing is not to be construed as any representation, assurance or guarantee by IAPMO Research and Testing, Inc. or the product acceptance by Authorized Listing Jurisdiction.

The most updated information on this Certificate of Listing is available online at plb.iapmo.org
Effective Date: October 2016 -Rev. 11/28/2016- Void After: October 2017
Product: Flexible Water Connectors File No. 4955
Issued To: Tuhuan Jianglin Plumbing Hose & Parts Co., Ltd.
Package Industry Zone
Tuhuan County
Shijiazhuang 517000,
China

Identification: Manufacturer's name or trademark and UPC certification mark. Special note on label: "For use with water in exposed locations only."

Characteristics: Flexible water connectors manufactured in various sizes, lengths and metal and fittings for hot or cold water applications that consist of an inner tube, which may or may not have an outer braided cover. Connectors are to be installed for use in accessible locations only and in accordance with the manufacturer's instruction, and the latest edition of the Uniform Plumbing Code.

Products listed on this certificate have been tested by an IAPMO R&T recognized laboratory. This recognition has been granted based upon the laboratory's compliance to the applicable requirements of ISO/IEC 17025.

Products are in compliance with the following code(s):
Uniform Plumbing Code (UPC)

David McHenry
Chairman, Product Certification Committee

Ross Cheney
CEO, The IAPMO Group



IAPMO RESEARCH AND TESTING, INC.

5001 East Philadelphia Street, Ontario, California 91761-2816 • (909) 472-4100 • (909) 472-4244 • www.iapmo.org



CERTIFICATE OF LISTING

IAPMO Research and Testing, Inc. is a product certification body which tests and inspects samples taken from the supplier's stock or from the market or a combination of both to verify compliance to the requirements of applicable codes and standards. This activity is required with periodic surveillance of the supplier's factory and operations as well as the assessment of the supplier's Quality Assurance System. This listing is subject to the conditions set forth in the IAPMO Research and Testing, Inc. Listing Agreement. This listing is not to be construed as any representation, assurance or guarantee by IAPMO Research and Testing, Inc. or the product acceptance by Authorized Listing Jurisdiction.

The most updated information on this Certificate of Listing is available online at plb.iapmo.org
Effective Date: November 2016 -Rev. 3/1/2017- Void After: November 2017
Product: Plumbing Fixture Fittings File No. 4528
Issued To: Hesper Inc.
171 Hattatash Heights
Waterbury, CT 06705

Identification: Each fitting component shall bear permanent legible markings to identify the manufacturer. This marking shall be the trade name, trademark, or other mark known to identify the manufacturer. The product shall also bear all other markings required by the standards. The marking shall be located where it can be readily seen after installation is complete. The product or packaging shall also bear the UPC certification mark.

Characteristics: Plumbing fixture fitting components to be installed in accordance with the manufacturer's instructions and the requirements of the latest edition of the Uniform Plumbing Code.

Products listed on this certificate have been tested by an IAPMO R&T recognized laboratory. This recognition has been granted based upon the laboratory's compliance to the applicable requirements of ISO/IEC 17025.

Products are in compliance with the following code(s):
Uniform Plumbing Code (UPC)
National Plumbing Code of Canada

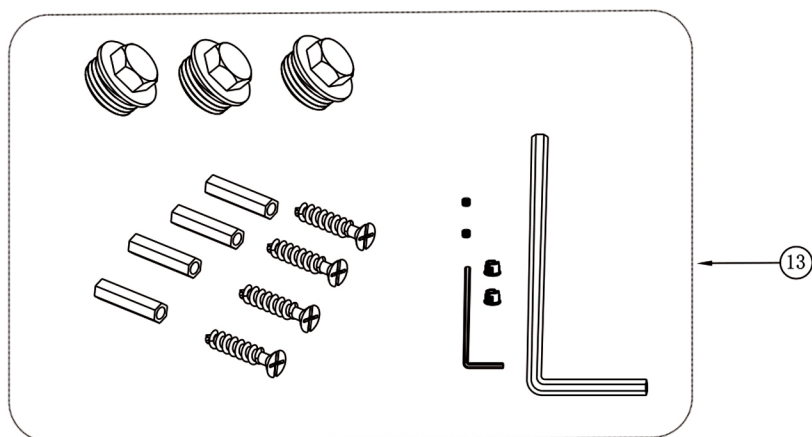
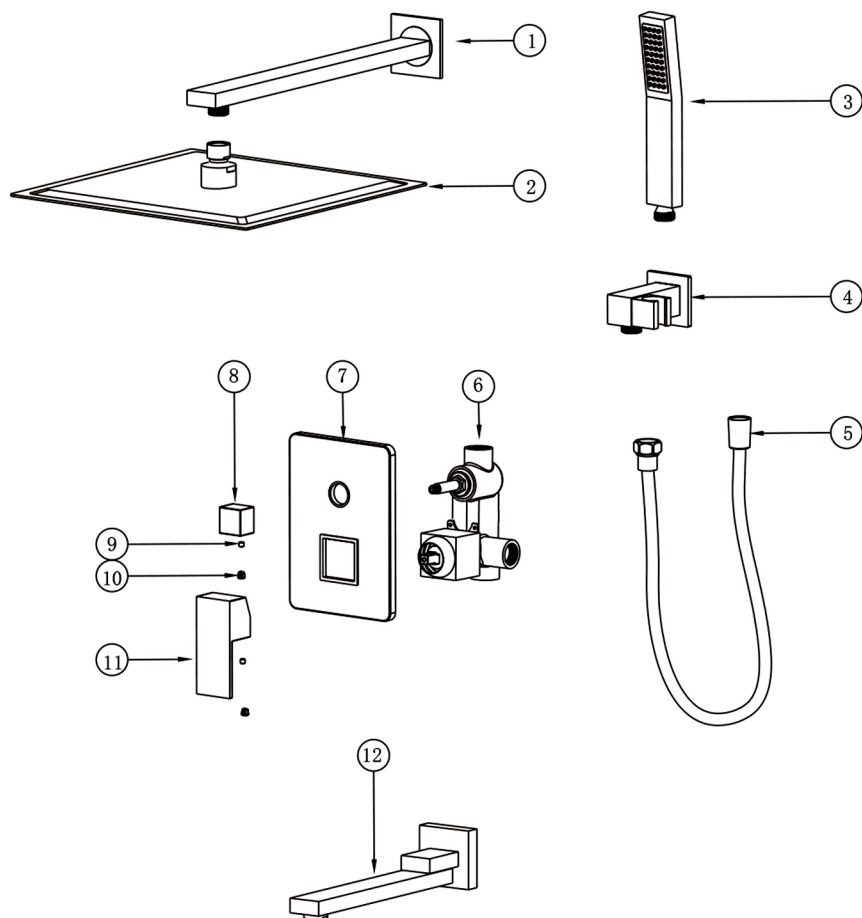
Tim Collins
Chairman, Product Certification Committee

Ross Cheney
CEO, The IAPMO Group



BEFORE INSTALLATION

NO.	Iteams	Qty
1	Shower arm	1
2	Rain shower head	1
3	Hand shower	1
4	Hand shower bracket	1
5	Shower hose	1
6	Main body (Withou tembedde'd box)	1
7	Panel	1
8	Diverter	1
9	Hexagon socket screw	2
10	Decorative button	2
11	Handle	1
12	Tub spout	1
13	Accessory bay	1



Check accesories

Standard List of Accessories:

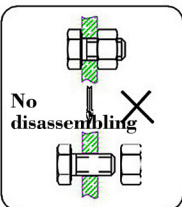
When you open the product packaing, please check whether the objects in it are consistent with the main body and accessouries you purchased. If there is any inconsistency, please contact our company or our distributor.

Note: 1.Accessories are subject to change without prior notice if the change does not affect usage;

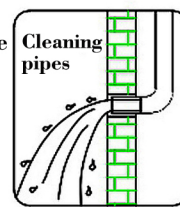
2.The appearance of the product is subject to the physical objects you receive, and the schematic diagram is only for reference.

INSTALLATION STEPS

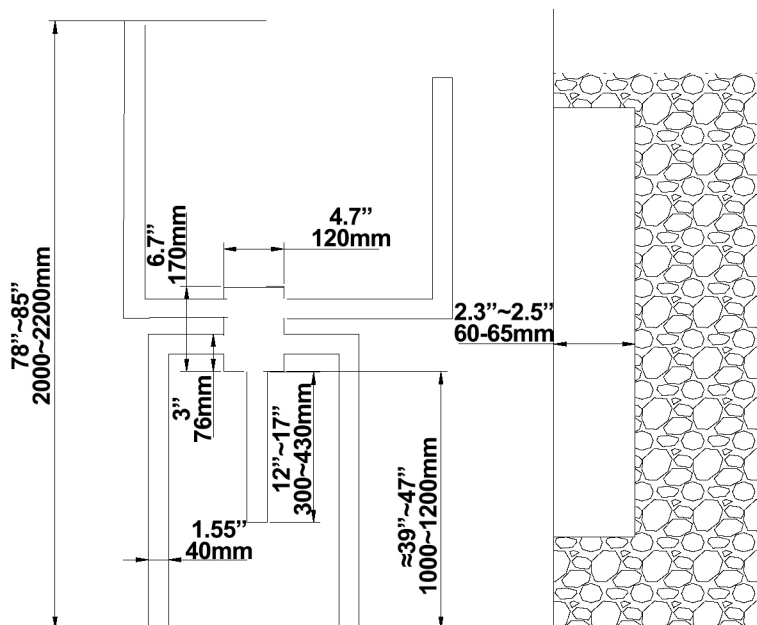
This product has been inspected and debugged by the factory to the best condition. Please do not disassemble and assemble it yourself.



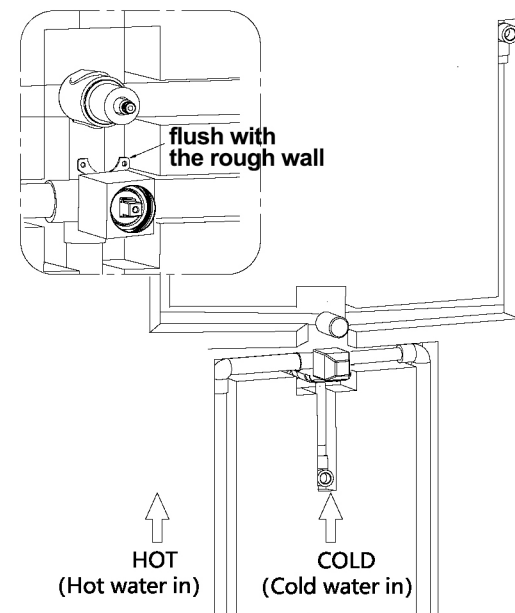
Before installing the faucet, please be sure to remove sundries and sludge from the water pipe to prevent sundries from blocking the faucet.



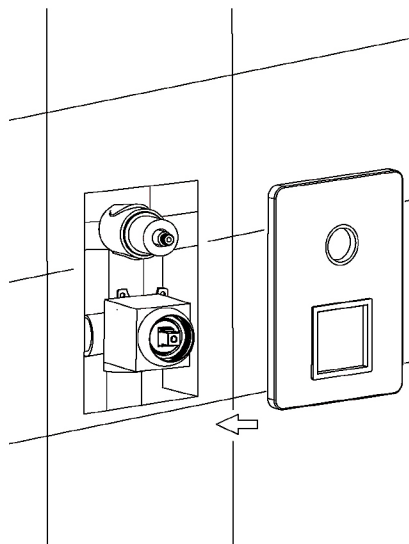
1. Dig pipe grooves for pre-burying pipes.



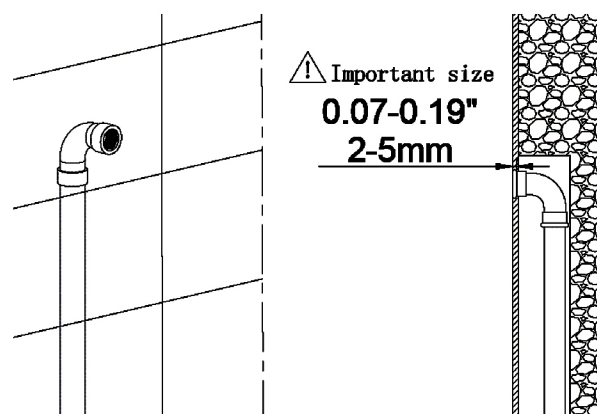
2. Install the main bod, water inlet and outlet pipes.



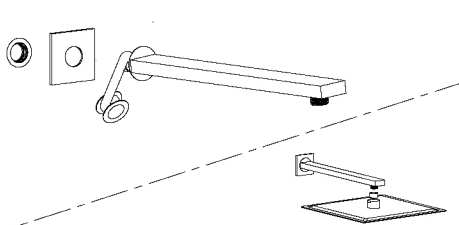
3. Fix ceramic tiles, remove the protective cover and install the panel.



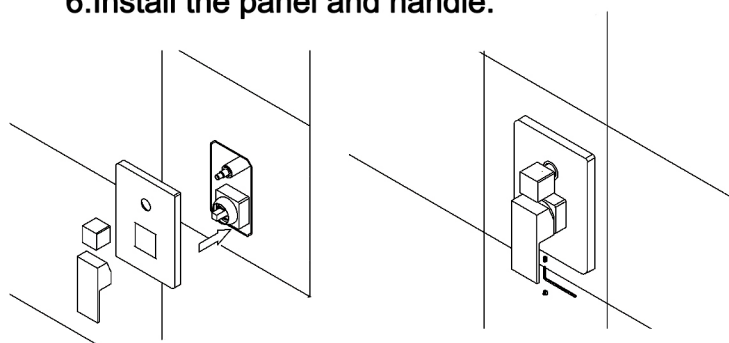
4. All outlets are slightly below the tile surface.



5. Install shower arm and rain shower head (wrap the PTFE tape on the thread)

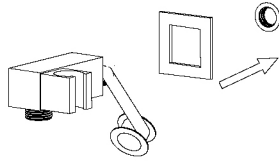


6. Install the panel and handle.

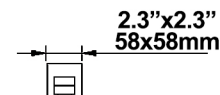
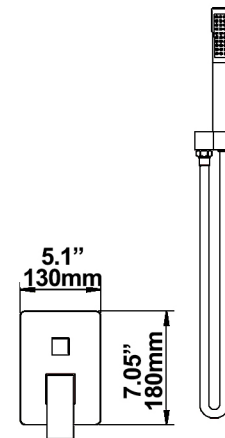
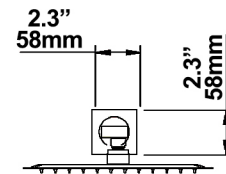
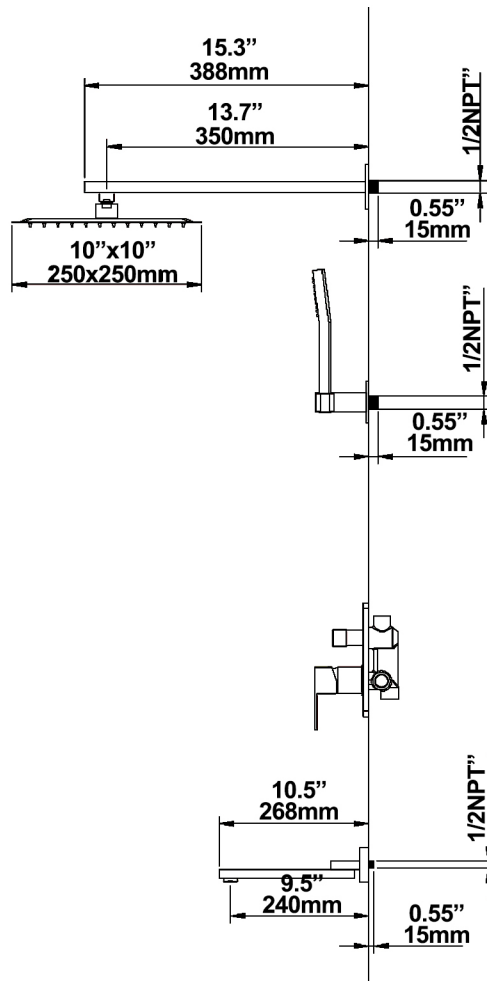
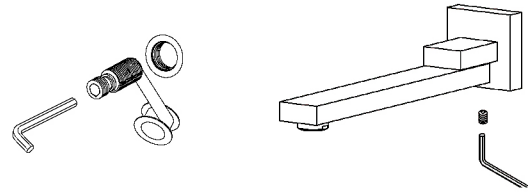


INSTALLATION STEPS

7. Install the hand shower bracket.
(wrap the PTFE tape on the thread)



8. Install the tub spout.
(wrap the PTFE Tape on the thread)



CLEANING CARE

In order to keep the appearance of faucet clean, bright and good performance, please take care of the faucet as follows;

1. Rinse with water only and dry with soft cotton cloth;
2. Use mild liquid and colorless glass cleaner to remove surface dirt and scale film, or use polish without abrasive effect;
3. Do not use abrasive detergent, polish, emery cloth, paper towel or scraper, etc.;
4. Do not use acid cleaner, or cleaner and soap with insoluble gran etc.;
5. In the process of use, mud may accumulate in the bubbler and make the water flow slow, The bubbler can be unscrewed, rinsed with water, and then installed back in place.



Please feel free to contact us if you have any questions. We will help to solve the issue together with you. OUR EMAIL: services@rbrohant.com



Service Contact:

6264872662

services@rbrohant.com

Made in China