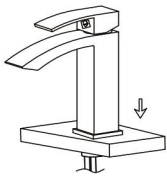


1.Remove the rubber washer,metal washer and locking nut from the faucet.



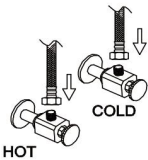
2.Screw and hand tighten the hot and cold flexible hoses to the faucet. Do not use a wrench to tighten hoses as this may damage the hose and/or the hose threads.



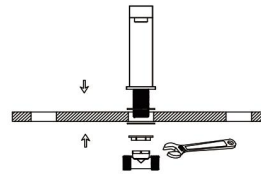
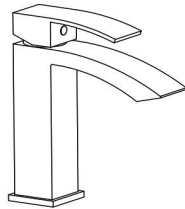
3.Install faucet through center hole.



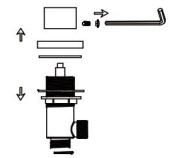
4.Re-install the rubber washer followed by the metal washer and lock-nut.Hand tighten then tighten further using a screw driver to tighten lock nut screws.



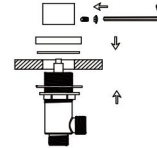
5.Attach flexible hose to water supply.



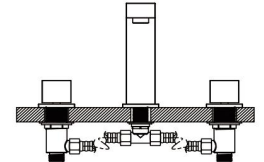
1.Remove the T-valve,lock nut and washer from the spout body.Place spout in center hole of sink.Assembly washer and tighten the lock nut to it. Connect the T-valve to the spout body using the wrench.



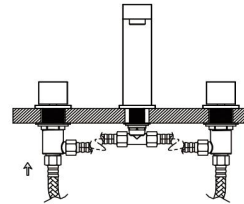
2.Remove mounting hardware from handle body.Connect water supply tube to valve body and tighten with lock nut. Do not allow the water supply brass tube to twist.Use two wrenches, as shown in the diagram, tighten the flexible hose.



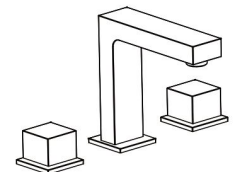
3.Place the spout in center hole of sink and handle body through right hole. (Left is red,right is blue).Assemble the rubber washer,washer and tighten with lock nut.



4.Connect handle body and faucet body with braided hoses.Tighten wrench tight.



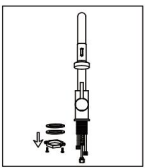
5.Screw and tighten the flexible hose to the faucet.Left is red,right is blue.Do not allow the water supply brass tube to twist.



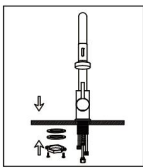
## Pull out Kitchen Faucet

### Notes before installation:

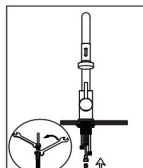
- 1.Please check that all components are present.
- 2.Before installation ensure that all feed lines are clear of debris and on/off valve is present.
- 3.Ensures water pressure is between 20-125 PSI(includes combination of hot and cold feed lines).
- 4.Pictures in the manual are general in content and may not represent exactly your purchased faucet.If you are having difficulties please contact a professional plumber.
- 5.If you will be away from home for an extended period you should shut off the main water supply.



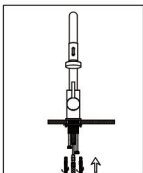
1.Remove locking-nut,metal and rubber washer and hose connector if installed.



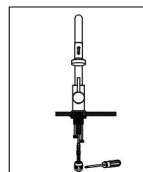
2.Install faucet through center hole, re-install rubber and metal washer followed by the lock-nut.Re-install hose connector if removed insuring small rubberwasher is also installed.Using a screwdriver tighten the lock-nut screws so that the faucet is secure and will not twist.



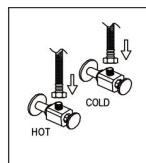
3.Tighten pull-out hose into the copper pipe.



4.Screw and hand tighten the hot and cold flexible lines to the corresponding faucet connectors. Using a wrench ensure that the copper faucets lines are stable as you tighten the braided feed lines.



5.Proper installation of the hose weight kit will ensure that the spray head retracts smoothly.On the spray side of the hose, measure 15" down from the body of the faucet.Install the hose weight kit at this point.Pull out on the spray head.It should move easily and retract smoothly. Reposition the hose weight kit as necessary.



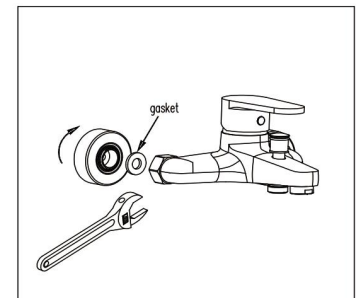
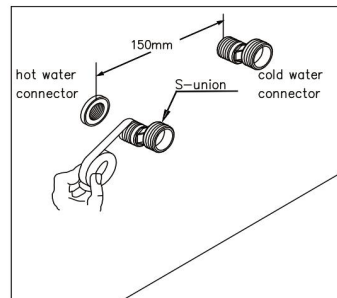
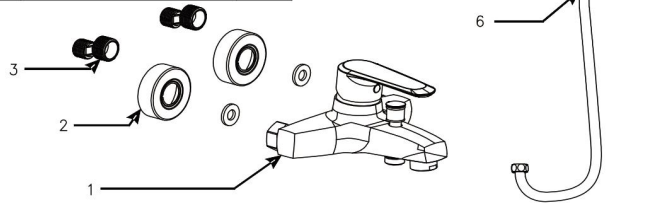
6.Attach flexible hose to water supply.



7.Hold on the spray-head hose,unscrew spray head and remove it along with the rubber washer.Turn on the faucet to flush the hose and feed line for 1-minute to flush debris.Turn off faucet and re-install the rubber washer and spray head.



S/N	description	No.S
1	body of mixer	1
2	decoration cover	1set
3	S-union	1set
4	shower seat	1
5	hand shower	1
6	shower hose	1
7	user's manual	1



1.After wrapping the tape, connect the S-union to the water outlet connector.(The distance between the hot water outlet and cold water outlet connector is 150mm,the height apart from floor should be fixed according to the bathtub height).

2.Screw the decoration cover onto the S-union. Then install the mixer's body to the S-union via the two connecting nuts,and fix them by spanner.(Note:wrapping some tapes on the spanner is suggested to avoid scratching the product surface).