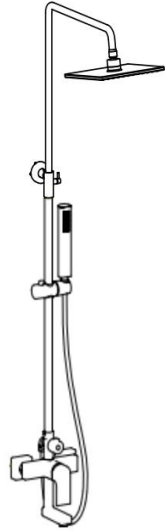
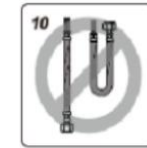
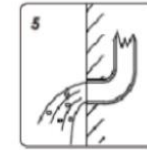


6914 shower faucet Installation instructions

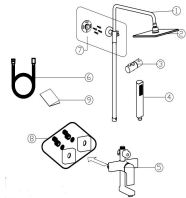


I 、 Installation Attention

- 1: Ensure that you have gathered all material and tools that are needed for the installation (check with the standard list of accessories).
- 2: Ensure that your bathtub size match with this faucet.
- 3: Faucet main body has been checked and tested by factory .Please do not dis-assembly it .
- 4: Attention please:Red hose for hot water ,Blue hose for cold water.If the wrong connected, the red and blue logo on the handle will indicate the opposite
- 5: Before install the faucet, please clean the impurities and sludge in the pre-buried pipe, so as to avoid blockage and affect the effluent function.
- 6: Please turn on the faucet after installation, and then check that the connections are tight without leakage.
- 7: Influent water pressure $\leq 0.1\text{MPa}$ Inlet pressure $\leq 1.0\text{MPa}$
- 8: The temperature of the medium must not be higher than 90°C
- 9: The torque at the mother joint shall not be greater than 10 Nm
- 10: Hose should not be over-bent to ensure that the hose do not deformed after installation.

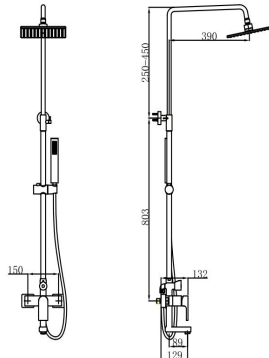


II 、 standard list of accessories



Number	Name	Quantity	Number	Name	Quantity
1	slider bar	1 set	5	shower valve	1 set
2	showerhead	1 pcs	6	hose	1 pcs
3	shower holder	1 pcs	7	Fixed	1 set
4	handheld shower	1 pcs	8	connector set	1 set
			9	Installation	1 pcs

III 、 Size for products

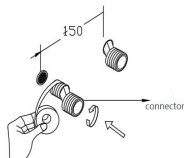


units:mm

Our company has always been continuously improving and improving its product design and performance policy, and reserves the right to change its product specifications without notice.

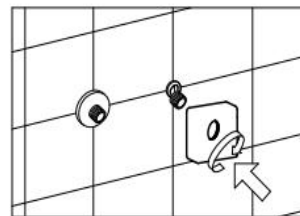
IV 、 Installation Steps

1



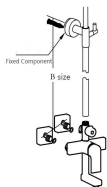
1. After the connector is wrapped with raw material belt, it is connected with the embedded outlet pipe connector (the distance between the two outlet joints is 150mm)

2



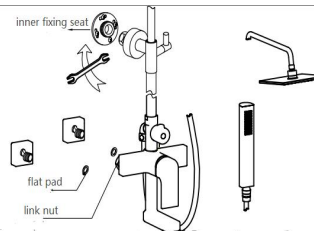
2. Install the decorative cup on the connector and rotate it to fit with the wall in a correct direction.

3



3. According to the B size of the purchased product, draw the approximate position of the fixed component with a pencil, and then fix the inner fixing seat on the determined wall position

4

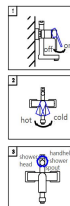


4. Put the flat pad into the link nut and connect it to the connector. Tighten the nut with the handle. At the same time, connect the fixed component to the inner fixing seat.

V、 Using instructions

1. Pull the hand upward for hot water, the larger the Angle, the more flow big; On the contrary, the smaller the Angle, the smaller the flow until closed. When the handle is opened upward, the left turn adjustment, hot water supply an increase in quantity; Rightward adjustment, cold water supply increased.

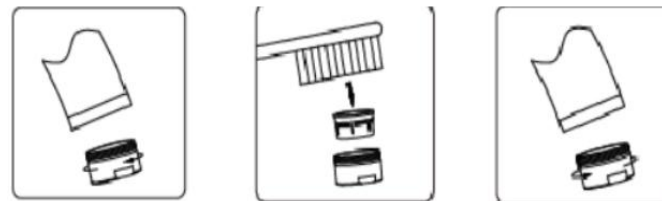
2. Under normal conditions, the water flows out from the outlet. If the rod head is lifted upward, the water is switched to the hand jacquard spray, and the outlet does not flow. When the water is cut off, the rod head automatically returns to the original position, and when the water source is opened again, the water nozzle is discharged.



Note: When the water source is cut off, the handwheel will not automatically restore to the original position. When the water source is opened again, the water should be discharged from the last outlet position. After each shower, the water should be rotated down the handwheel to the outlet nozzle outlet state.

VI、 Tips

In order to avoid clogging, please regularly disassemble the water outlet to remove debris according to the quality of the water source (as shown in the figure). This can prevent leakage or softening of the outlet nozzle.



VII、 Care and maintenance

In order to protect the faucet surface smooth and bright, please clean the faucet frequently or regularly:

- Clean with water frequently, and dry the tap with a soft cotton cloth;
- Do not use detergent with coarse particles such as decontamination powder or polishing powder or nylon brush to avoid abrasion of the product.
- Since acid detergent can corrode the coating, it should not be used. If the tiles have been washed with acid detergent, the tiles and utensils should be fully washed immediately to prevent the detergent from flowing to the surface of the faucet and corroding the coating of the faucet.
- Please do not pull the sprinkler tube forcefully to avoid rupture of the tube body.

If doing a lot of cleaning work, follow the procedure below.

1. Use clean water and soft cloth to remove dirt and scale film on the surface as much as possible.
2. Use any of the following cleaning agents to remove surface dirt and scale film.

- Mild liquid cleaner.
- Colorless glass cleaner, powdered cleaner that is not abrasive and can completely dissolve (and mix as instructed).
- Polishing fluid without abrasion.

3. After cleaning, please use clean water to remove all the cleaning agent and dry it with a soft cotton cloth.

