

WALLSHIELD ECO

SMOOTH, HIGH-PERFORMANCE, ECO-FRIENDLY EXTERIOR WALL COATING

A superb, long-lasting decorative finish that also protects and helps improve insulation



PERFORMANCE ADVANTAGES

- > Smooth, eco-friendly water-based wall coating
- > Decorative and protective
- > Hard wearing, long lasting, flexible
- > Elastic – waterproof and water vapour permeable
- > Brush, roller or spray applied
- > Contains algicide and fungicide

USES

Suitable for the decoration of external substrates including concrete, brick work, asbestos, cement and renderings, brick, stone, blockwork and pebbledash. Also suitably primed aluminium, iron work and surfaces previously painted with emulsions or oil paints.

- > Can be brush, roller or spray applied.

NOT TO APPLY IF THERE IS A RISK OF HEAVY RAIN

Not be used on high density, low suction substrates such as glazed bricks, faience tiles and engineering bricks.

COLOUR RANGE

- > White and other colours to order (see colour range).



PACK SIZE

- > Available in 5 litre and 15 litre containers.

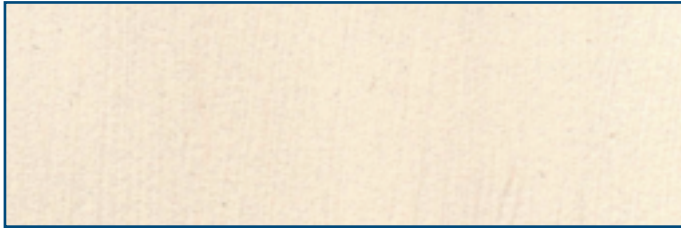
SPREADING RATE

- > As a general guide up to 16 square metres/litre per coat depending on surface texture. These figures are only an approximate guide and maybe reduced. If in doubt, apply a small trial area first.
- > **1 coat maybe sufficient but normally 2 coats.**

Dependent on nature of the substrate, temperature and application method.

WALLSHIELD ECO COLOUR RANGE

(Colours shown are approximate and for indication only)



IVORY WHITE



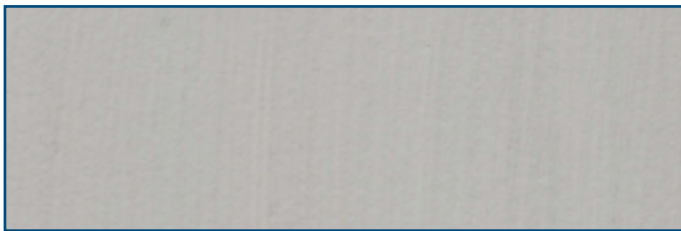
AUTUMN RED



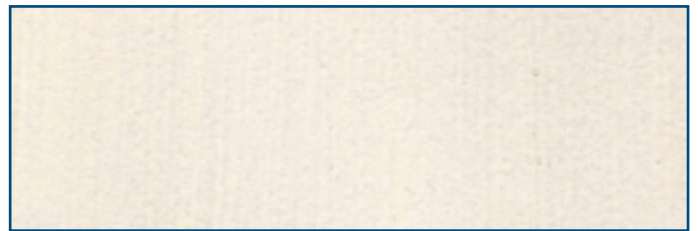
RICH BROWN



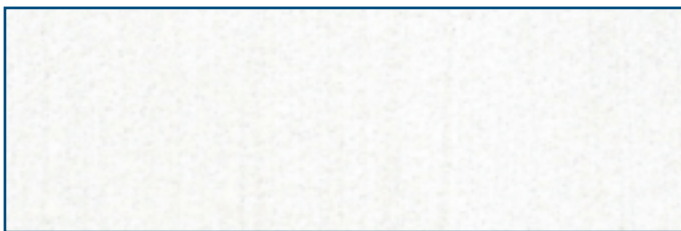
RUSTIC BEIGE



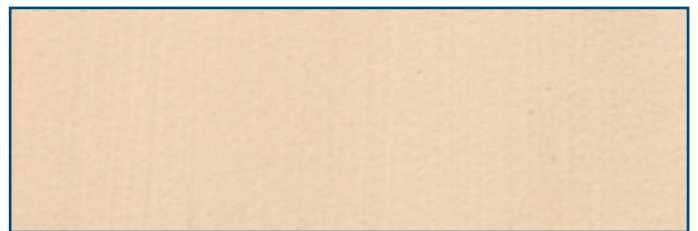
LIGHT GREY



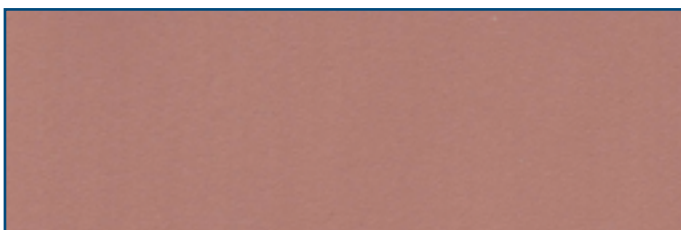
EGGSHELL



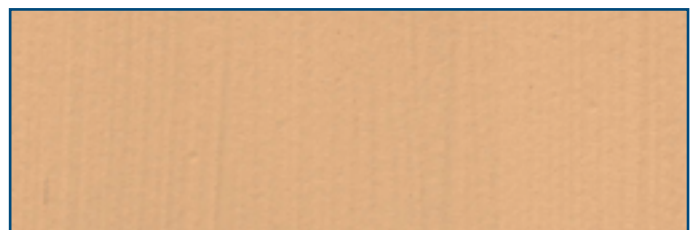
WHITE



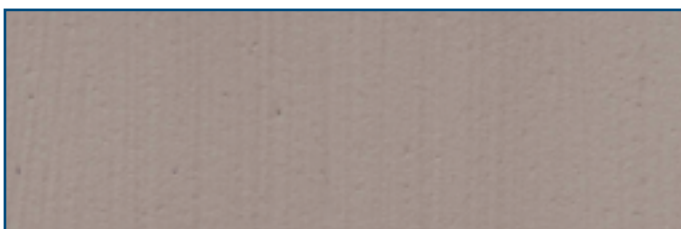
CREAM



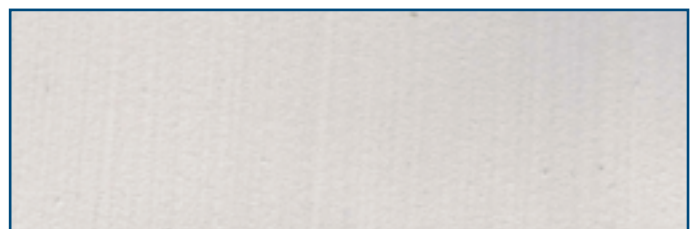
MILD ROSE



CHAMPAGNE



OAK GREY



PEARL GREY

DRYING TIME

- > Touch dry in 1-2 hours
- > Recoatable after 4-6 hours under normal drying conditions

Do not apply when air or surface temperatures are below 10°C or rain is imminent.

Care should be taken to avoid Brush, Roller or Spraying wet surfaces. In cold weather walls **must** be free from retained frost.

SHELF LIFE

- > Up to 12 months if stored correctly in an unopened container.

PREPARATION

DAMP WALLS

It is important that very damp or wet walls are not coated. Building faults that allow moisture to enter walls, e.g. broken rainwater downspouts, guttering and coping stones.etc, should be repaired before coating. Experienced applicators can assess this situation to verify suitability, however if in any doubt please contact Britannia Paints for further advice.

ALGAE or FUNGI

Algal or Fungal deposits should first be removed by power washing the surface and then coated with **Britannia's Fungicidal Wash Solution**.

LOOSE OR FRIABLE AND NEWLY RENDERED SURFACES

The substrate to be coated should be sound, free from dirt, grease, oil, dust, chalk and friable material. However soundly adhering render with a friable surface, should be pre-treated with **the Topcoat thinned 20% prior to the second coat**.

EXTREMELY FRIABLE/LOOSE SURFACES

These should be coated with Britannia's Stabilising Masonry Solution (see separate technical data sheet).

CRACKS

Hairline cracks can be successfully covered but substantial cracks should be filled with a proprietary sealant.

APPLICATION

> STIR WELL BEFORE USE.

Wallshield Eco can be applied by Brush, Roller or Spray. Coverage will be determined by the nature of the substrate, temperature and application method.

Roller Type - depends on surface type but a heavy pile is generally used for rough surfaces, a medium to short pile for smooth surfaces up to a maximum of a 12" roller.

Note. During the summer months there is a possibility of paint skinning from warm weather/transportation (top of inside lid and rim). We recommend that the paint is pre-filtered on site through a course filter to remove skins before spraying.



Certificate Number 8516
ISO 9001

Airless Spray - painting may be carried out by most industrial airless equipment. Tip size of 18-23 thou is recommended and pressure 150-200 bar. Care should be taken to mask all areas not to be coated.

PREVIOUSLY PAINTED SURFACES (PEBBLE DASH AND ROUGH CAST RENDERS)

As a guide up to 8 square metres/ litres per coat.
> **1 coat maybe sufficient but normally 2 coats.**

FOR SMOOTH WALLS

As a guide up to 16 square metres/litre per coat.
> **1 coat maybe sufficient but normally 2 coats.**

These figures are only an approximate guide and maybe reduced. If in doubt, apply a small trial area first.

CLEANING

Clean all brushes and equipment with water after use.

PRECAUTIONS

- > Keep out of reach of children.
- > In case of contact with eyes wash immediately with plenty of water.
- > Remove splashes from skin with soap and water or a recognised hand cleaner.
- > Protect from freezing.
- > Do not apply paint if there is a risk of heavy rain or frost.
- > Do not use near fishponds.

SAFETY

Good working practice should be followed and safety/walking boards should be utilised where required.

The specification and coverage rates are given in good faith and are based on our experience and knowledge but without liability.

As Britannia Paints Limited has no direct control over the methods employed by the user in applying its products, any warranty either written or implied is given in good faith and can only cover the material itself.

If in doubt regarding any of the above points, please contact our technical services department for advice.

A Material Safety Data Sheet is available on request.

It is the users responsibility to ensure that this data sheet is current prior to using the product.



Unit 7/8 King Street Trading Estate, Middlewich, Cheshire CW10 9LF
T: 01606 834015 F: 01606 837006 E: sales@britanniapaints.co.uk www.britanniapaints.co.uk

Version 16 / Apr 2020