

WALLSHIELD

PLIOLITE® BASED MASONRY COATING

A SMOOTH longer lasting solvent based MATT masonry finish

All year round exterior decoration

PERFORMANCE ADVANTAGES

- > Up to 15 years protection
- > Can be applied down to -5°C
- > Solvent based smooth matt Coating for Exterior walls
- > Becomes showerproof in 20 mins
- > Allows all year around exterior decoration

Pliolite® is a registered trademark of Eliokem



USES

Suitable for the decoration of external substrates including concrete, brick work, asbestos, cement and renderings, brick, stone, blockwork and pebbledash. Also suitably primed aluminium, iron work and surfaces previously painted with emulsions or oil paints.

- > Can be brush, roller (solvent resistant) or spray applied

**NOT TO APPLY IF THERE IS A RISK OF HEAVY RAIN
DO NOT USE ON BITUMEN COATINGS**

Not be used on high density, low suction substrates such as glazed bricks, faience tiles and engineering bricks.



COLOUR RANGE

- > White and other colours to order (see colour range).

PACK SIZE

Available in 5 Litre and 15 Litre containers.

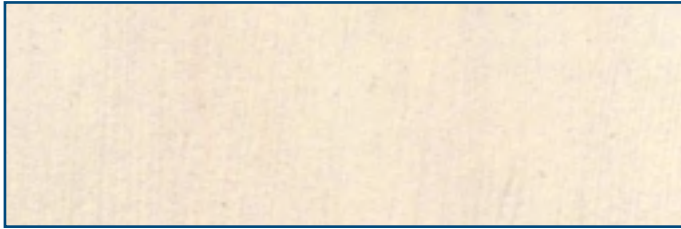
SPREADING RATE

- > As a general guide up to 8 square metres/litre per coat depending on surface texture.
- > These figures are only an approximate guide and maybe reduced for pebbledash and rough cast renders.
- > If in doubt, apply a small trial area first.
- > **1 coat maybe sufficient but normally 2 coats.**

Dependent on nature of the substrate, temperature and application method.

WALLSHIELD PLIOLITE® BASED MASONRY COATING COLOUR RANGE

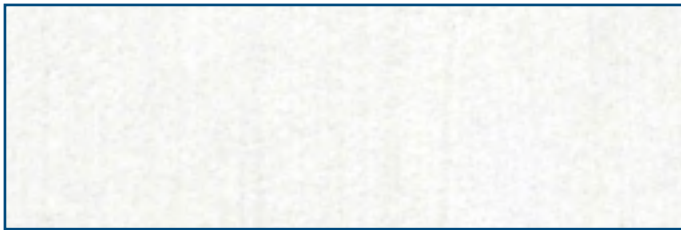
(Colours shown are approximate and for indication only)



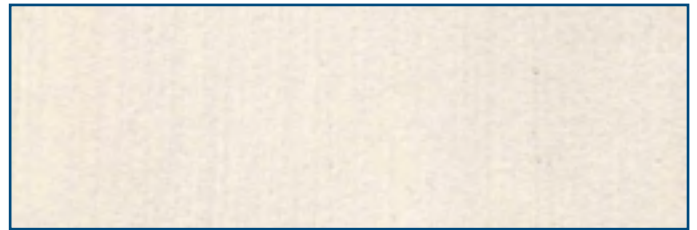
IVORY WHITE



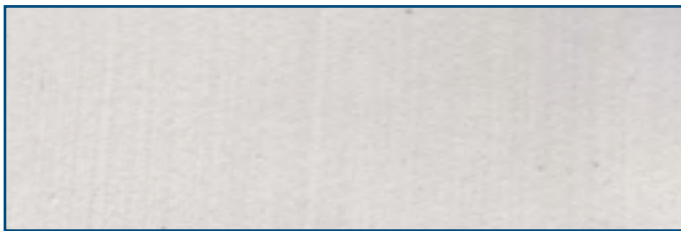
RUSTIC BEIGE



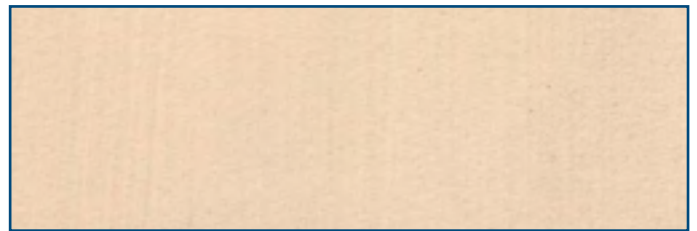
WHITE



EGGSHELL



PEARL GREY



CREAM

DRYING TIME

- > Touch Dry: 1 - 1.5 hour*
- > Recoatable after 16-24 hours* under normal drying conditions

**Drying time will vary according to temperature and humidity e.g. the drying time quoted will be significantly longer in cold, damp conditions.*

SHELF LIFE

- > Up to 2 Years if stored correctly and unopened under normal and frost free conditions.



PREPARATION

NEW SURFACES – All surfaces must be sound, suitably dry and free from anything that will interfere with the adhesion of the materials to be applied.

> **Surfaces with suction (Porous surfaces) should be treated with an application of Britannia's Stabilising Masonry Solution (see separate technical data sheet)**

PREVIOUSLY DECORATED SURFACES – All surfaces must be sound, suitably dry and free from anything that will interfere with the adhesion of the materials to be applied.

> Remove all loose, and failing or suspect material by scraping or brushing with a stiff bristle brush (not wire) to a sound edge.

> Organic growth must be removed and the areas treated with Britannias Fungicidal Wash Solution. For surfaces in poor condition mechanical means may be necessary e.g. pressure washing between 1500-2000psi (102-136 bar), proprietary paint removal system, wet or dry grit blasting. Care must be taken not to damage the underlying surface.

> Fill cracks and small defects in masonry surface with a proprietary ready mixed Filler and finish to match existing.

> **Stabilise all bare, filled and previously decorated chalking areas with the application of Britannia's Stabilising Masonry Solution.**

> Wash any soundly adhering gloss painted surfaces with hot water and liquid detergent solution to remove any contaminants frequently changing the water. Wet abrade to provide a key. Rinse thoroughly with clean water to remove all residues.

APPLICATION

> **STIR WELL BEFORE USE**
> **DO NOT THIN***

**Except when extremely cold when up to 10% white spirit can be added for brush or spray application.*

Wallshield can be applied by Brush, Roller (solvent resistant) or Spray.

Coverage will be determined by the nature of the substrate, temperature and application method

Roller Type (solvent resistant) - depends on the surface type but a heavy pile is used for rough surfaces, a medium to short pile for smooth surfaces up to a maximum 12" roller.

Airless Spray - Painting may be carried out by most Industrial airless equipment. Use a minimum tip size of 18 thou and a recommended fluid pressure of 2000psi (136 bar). Care should be taken to mask all areas not to be coated.

PREVIOUSLY PAINTED SURFACES (PEBBLEDASH AND ROUGH CAST RENDERS)

As a guide up to 4 square metres/litre per coat.
> **1 coat maybe sufficient but normally 2 coats.**

FOR SMOOTH WALLS

As a guide up to 8 square metres/litre per coat.
> **1 coat maybe sufficient but normally 2 coats.**

These figures are only an approximate guide and maybe reduced. If in doubt, apply a small trial area first.

CLEANING

> Clean equipment immediately after use with white spirit.
> Remove as much product as possible from application equipment before cleaning.
> Replace lid firmly.

PRECAUTIONS

> **Flammable** keep away from sources of ignition.
> Ensure good ventilation during application.
> Wear gloves, goggles and suitable protective clothes.
> In case of contact with eyes rinse immediately with plenty of water and seek medical advice.
> Remove splashes from the skin with a recognised hand cleaner or plenty of soap and water.
> Keep out of reach of children.
> Do not use near fishponds.
> Toxic to aquatic organisms. May cause long term adverse effects in the aquatic environments.
> Do not empty into drains.

SAFETY

Good working practice should be followed and safety/walking boards should be utilised where required.

Apply all products in accordance with BS 6150:2006 Code of Practice for painting of buildings and BS 8000:Part 12 1989 Code of practice for decorative wallcoverings and painting.

The specification and coverage rates are given in good faith and are based on our experience and knowledge but without liability.

As Britannia Paints Limited has no direct control over the methods employed by the user in applying its products, any warranty either written or implied is given in good faith and can only cover the material itself.

If in doubt regarding any of the above points, please contact our technical services department for advice.

A Material Safety Data Sheet is available on request.

It is the users responsibility to ensure that this data sheet is current prior to using the product.



Certificate Number 8516
ISO 9001



Unit 7/8 King Street Trading Estate, Middlewich, Cheshire CW10 9LF
T: 01606 834015 F: 01606 837006 E: sales@britanniapaints.co.uk www.britanniapaints.co.uk

Version 4 / April 2020