

# FUNGICIDAL WASH SOLUTION

## CONTROLS AND TREATS FUNGAL AND ALGAL GROWTH PRIOR TO PAINTING

### PERFORMANCE ADVANTAGES

- > Easy, quick and safe to use
- > Powerful, proven water based solution for external hard surfaces
- > Specially prepared fungicide controls and treats fungal and algal growth prior to painting
- > Ready for use

### USES

A powerful cleaner for external hard surfaces such as tiled roofs, walls, timber decking, block paving and cladding.

- > Can be brush or spray applied.

### COLOUR

- > Clear.

### PACK SIZE

- > 5 Litre and 25 Litre.

### SPREADING RATE

- > As a guide, up to 10-20 sq. metres/litre, dependent upon substrate.

### APPLICATION TIME BEFORE WASHING DOWN

- > 24 hours.

### PREPARATION

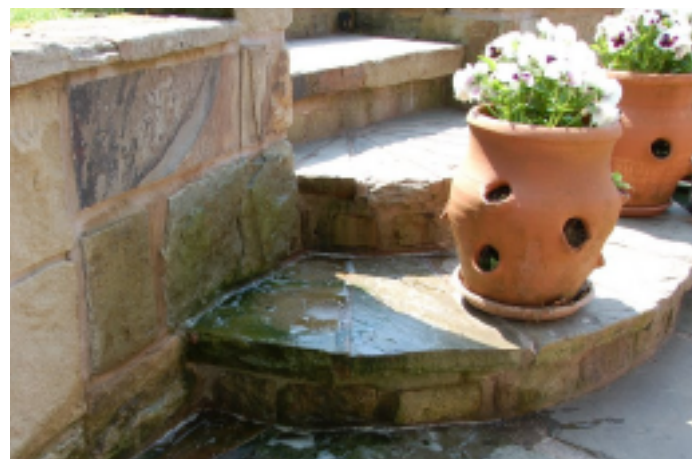
Remove heavy growth, moss or similar vegetable matter with a stiff bristle brush.

### APPLICATION

#### > SHAKE THE CAN WELL BEFORE USE

Preferably by brush. Apply a coat of the solution to the affected areas and allow 24 hours to elapse. This procedure eliminates further contamination by active spores to surrounding areas during surface preparation. It is advisable to treat persistent stains caused by fungal growth with a further coat of Fungicidal Wash solution and 24 hours should be allowed prior to painting.

The product is cleared under the Control Of Pesticides Regulations 1986 (COPR), for use as directed. HSE No. 10887 contains as supplied Alkyl Dimethyl Benzyl Ammonium Chloride at 2.48%.





#### CLEANING

- > Clean all equipment immediately with water after use.

#### SHELF LIFE

- > Up to 12 months if stored correctly in an unopened container.
- > Store above 5°C.

#### PRECAUTIONS

**This solution should not present any hazard, provided the following precautions are observed:**

- > Wear suitable protective clothing i.e., rubber gloves when applying.
- > Avoid working in a spray mist or wear suitable breathing apparatus and eye protection.
- > Wash away any splashes to the skin and eyes immediately with copious amounts of water.
- > Wash hands etc. before meals and after use.
- > Do not use near foodstuffs.
- > Dangerous to fish, do not contaminate ponds, waterways or ditches.
- > Cover water storage tanks before application.
- > Do not empty into drains.

#### SAFETY

Store in original container and keep away from children. Dispose of empty containers completely and safely.

Good working practice should be followed and safety/walking boards should be utilised where required.

The specification and coverage rates are given in good faith and are based on our experience and knowledge but without liability.

*As Britannia Paints Limited has no direct control over the methods employed by the user in applying its products, any warranty either written or implied is given in good faith and can only cover the material itself.*

If in doubt regarding any of the above points, please contact our technical services department for advice.

**A Material Safety Data Sheet is available on request.**

*It is the users responsibility to ensure that this data sheet is current prior to using the product.*



Cert: 8516



Unit 7/8 King Street Trading Estate, Middlewich, Cheshire CW10 9LF  
T: 01606 834015 F: 01606 837006 E: sales@britanniapaints.co.uk www.britanniapaints.co.uk

Version 17 / Jan 2022