

HIGH BUILD EPOXY FLOOR COATING

HIGH BUILD EPOXY (2 PACK, 100% SOLIDS)

EXTREMELY HARD WEARING AND CAN WITHSTAND HEAVY TRAFFIC, INCLUDING FORKLIFT TRUCKS. IDEAL FOR INDUSTRIAL AND COMMERCIAL FLOORS, SHOWROOMS, PLANT ROOMS AND SCHOOLS

PERFORMANCE ADVANTAGES

- > High Build Gloss Finish
- > 100% Solids Epoxy
- > Hard wearing, good abrasion resistance, withstands foot and forklift trucks
- > Provides easy to clean, dust free surfaces
- > Good chemical resistance
- > Easy to mix/use
- > Choice of Colour range
- > Slip resistant options



USES

- > **INTERNAL USE ONLY.**
- > A heavy duty floor coating for new and existing concrete floors in processing and beverage areas, chemical plant rooms, engineering workshops, automotive & aviation areas, factory and warehouse units.
- > Not recommended for use on Bitumen or asphalt.
- > Can be brush, squeegee or applied by solvent resistant roller.

COLOUR RANGE

- > Tile Red, Dark Grey, Light Grey. Other colours to order.



PACK SIZE

- > 5Kg Composite Packs (including Part A - Epoxy Resin, Part B - Curing Agent).

SPREADING RATE

Topcoat:

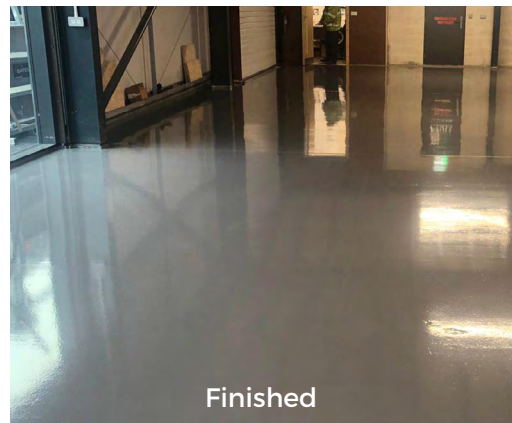
- > 5Kg Composite Pack covers 13.5-16m² per coat (2.7-3.2m²/Kg per coat) achieving a dft of 200-240 microns per coat.
- > Apply 2 Coats which will give an overall dft of approx 400-480 microns.



Application of primer



Primed



Finished

COLOURS



Light Grey



Dark Grey



Tile Red

Other colours to order.

Colours shown are approximate and are for indication only

DRYING/CURING TIME

- > **Minimum air application temperature must be above 15°C.**
- > **Minimum flooring application temperature must be above 10°C.**
- > Light Traffic after 24 hours at 20°C.
- > Forklifts/Heavy Traffic after 3 days at 20°C.
- > Avoid washing surface until a full cure has been completed after 7 days at 20°C.
- > Recommended over coating after 12-18 hours depending on temperature.

DEW POINT

- > Beware of condensation
- > The substrate and uncured floor must be at least 3°C above dew point to reduce the risk of condensation or blooming on the floor finish.

Note: low temperatures and high humidity conditions increase the probability of blooming.

SHELF LIFE

- > **DO NOT ALLOW PACKS TO FREEZE.**
- > 12 months shelf life from date of production in original unopened containers and can be stored in dry conditions between 5°C - 30°C.

PREPARATION

New Concrete Floors:

- > New Concrete must be at least 4 weeks old before considering coating the substrate or moisture less than 5%
- > The substrate should be clean, free from laitance removed preferably by techniques which should include (depending on the degree of contamination) acid etching, light mechanical scabbling, blasting, grinding or degreasing.

Existing Concrete Floors:

- > Remove all dirt, oil, grease or other surface contaminants by enclosed shot blasting, scarification or mechanical grinding.
- > Fats, oils or greases must be removed by mechanical means and detergent washing.

PRIMING

- > BRITANNIA EPOXY PRIMER (see separate Britannia Epoxy Primer data sheet) must be used on highly polished/Power floated Floors.
- > Open, porous substrates will require priming.
- > BRITANNIA DAMP TOLERANT PRIMER (see separate Britannia Damp Tolerant Primer data sheet) for any environment with damp conditions.

MIXING

- > Add the smaller tin containing PART B - CURING AGENT to the bigger tin containing PART A - EPOXY RESIN. Ensure mixing of the combined materials is done thoroughly using a spatula, wide bladed tool and or drill assisted paint mixing tool (on its lowest speed setting).

ALWAYS ENSURE A SPATULA IS USE TO MIX ANY UNMIXED MATERIALS FROM THE SIDES OR THE BOTTOM OF THE TIN.

- > It is suggested that continuous mixing is maintained for at least 3 minutes until an even colour and uniform consistency is achieved. Over mixing must be avoided to reduce air entrainment.
- > **DO NOT MIX MORE THAN ONE PACK AT A TIME.**

POT LIFE

- > Up to 30 minutes at 20°C. Greater temperatures will reduce pot life.

Special colour made to order

APPLICATION

STIR WELL BEFORE USE.

- > **Store between 15°C - 25°C** for at least 8 hours before use.
- > **The ambient temperatures** of the areas should not be allowed to fall below 15°C throughout the application and curing period.
- > **Surface temperatures** must be above 10°C, avoid surfaces temperatures above 30°C.
- > **Apply the first coat** by brush, squeegee or short-medium pile solvent resistant roller ensuring the product is well worked into the surface.
- > **DO NOT USE A WATER-BASED ROLLER.**
- > Do not exceed the coverage rates stated above.
- > **DO NOT OVER ROLL.**
- > **Floor areas** should be cross-rolled to ensure even application and to minimise roller marks.
- > **Second coat** can be applied after 12-18 hours and should be completed within 5 days of initial coat, if left for longer than 5 days, the surface should be abraded pre second coat.

CLEANING APPLICATOR/MIXING EQUIPMENT

- > Before the product cures all applicators should be washed in solvent cleaner. Any spillages of the PART A - EPOXY RESIN prior to mixing must be removed by solvents.

GENERAL MAINTENANCE

- > All surfaces should be thoroughly rinsed with clean water after the use of chemical cleaners.
- > Do not steam clean or use anything that cleans with temperatures exceeding 60°C.
- > If unsure of any industrial cleaners, use a test area to ensure compatibility.

PRECAUTIONS

- > **See MSDS sheet**
- > Wear gloves, goggles and suitable protective clothes.
- > In case of contact with eyes rinse immediately with plenty of water and seek medical advice.
- > Remove splashes from the skin with a recognised hand cleaner or plenty of soap and water.
- > Keep out of reach of children.
- > Do not use near fishponds.
- > Toxic to aquatic organisms. May cause long term adverse effects in the aquatic environments.
- > Do not empty into drains.

SAFETY

- > Good working practice should be followed.

The specification and coverage rates are given in good faith and are based on our experience and knowledge but without liability.

As Britannia Paints Limited has no direct control over the methods employed by the user in applying its products, any warranty either written or implied is given in good faith and can only cover the material itself.

FURTHER INFORMATION

There is a code of practice from FerFA (the Resin Flooring Association) - Guide to the specification and application of synthetic resin flooring on www.ferfa.org.uk which can be consulted for general advice on preparation of substrates.

If in doubt regarding any of the above points, please contact our technical services department for advice.

It is the users responsibility to ensure that this data sheet is current prior to using the product.



Certificate Number 8516
ISO 9001



Unit 7/8 King Street Trading Estate, Middlewich, Cheshire CW10 9LF
T: 01606 834015 F: 01606 837006 E: sales@britanniapaints.co.uk www.britanniapaints.co.uk

Version 8 / Oct 2021