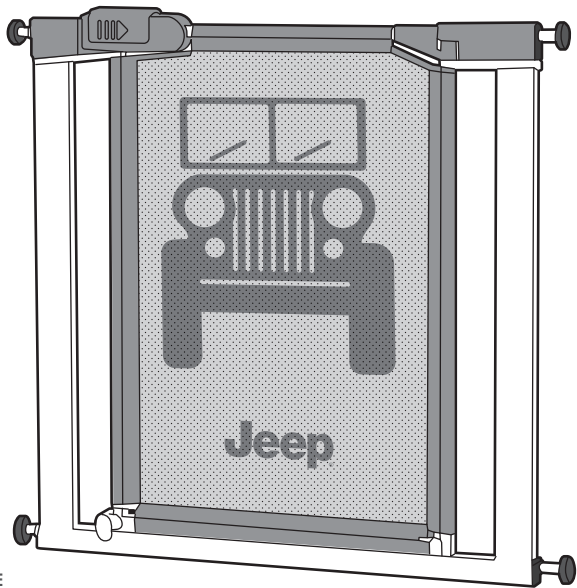


DELTA♥CHILDREN™

Jeep® Safety Gate Owner's Manual



KEEP FOR FUTURE REFERENCE

Please read the instructions carefully before installing this gate. Intended for use with children up until they are able to climb over or dislodge the gate - usually around 24 months of age.

⚠ WARNING:

Children have died or been seriously injured when gates are not securely installed.

- ALWAYS install and use gate as directed using all required parts.
- STOP using when a child can climb over or dislodge the gate.
- Use only with latching mechanism securely engaged.
- NEVER use a gate to keep child away from pool.
- To prevent falls, NEVER use at top of stairs.
- STOP using if gate becomes damaged, broken or disassembled.

⚠ CAUTION:

This product contains small parts which are for adult assembly only. Keep assembly parts out of reach of children under 3 years.
ADULT ASSEMBLY REQUIRED.

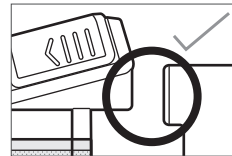
COLORS AND STYLE MAY VARY.

DISCLAIMERS

Any misuse, abuse, abnormal use, excessive wear and tear, improper assembly, negligence, environmental exposure, accident or alteration of the gate, as well as removal or alteration of its serial number, invalidates any and all claims against the manufacturer. Any damage to property during installation is the sole responsibility of the end user.

PLEASE NOTE: There is a gap between your gate frame and handle. This is not a defect. This gap will close once your gate is properly installed. Please check the gate on a regular basis to ensure that all parts are in proper working condition.

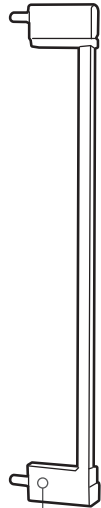
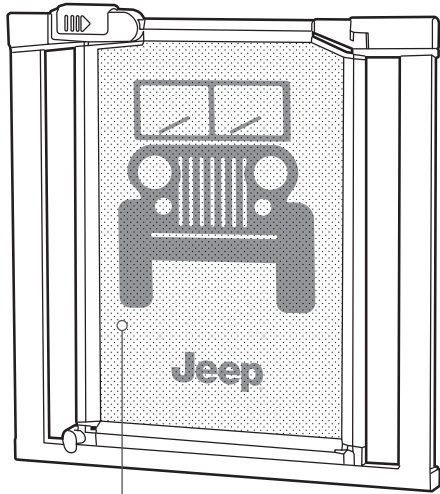
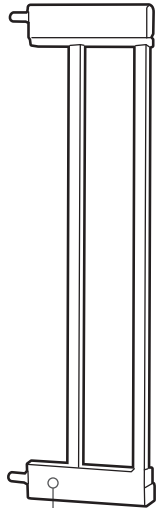
Please inspect your gate immediately.
If you see any damage, do not attempt installation.



Intended for use with children up until they are able to climb over or dislodge the gate - usually around 24 months of age.

PARTS

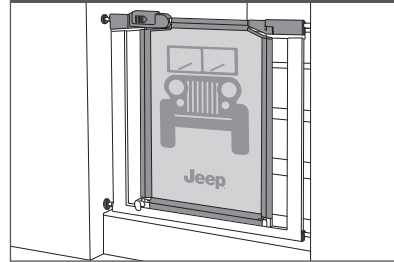
- ① Wrench (x1)
- ② Extension Pins (x4)
- ③ Spindles (x4)

8cm Small
Extension (x1)16cm Large
Extension (x1)

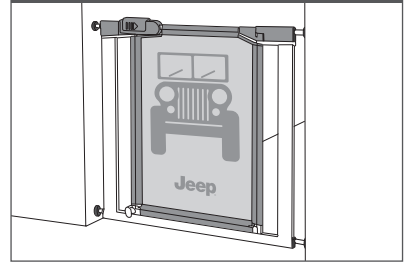
MEASURE DOOR OPENING

Choose location for gate and measure opening. Use the sizing chart below to choose your configuration.

Bottom of Stairs

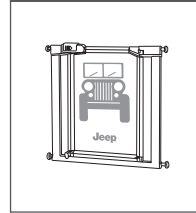


Hallways & Doorways

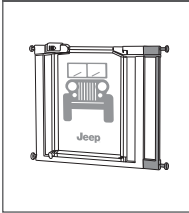


SIZING

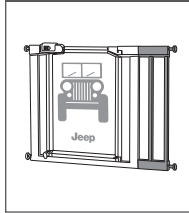
Just Gate
29.5" - 32.75"



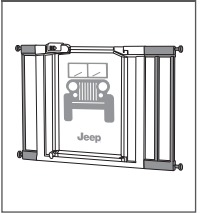
Small Extension
32.75" - 36"



Large Extension
36" - 39"



Both Extensions
39" - 42"



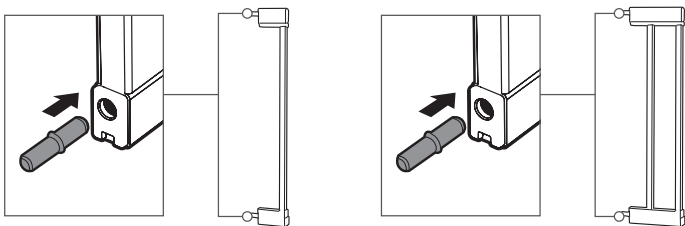
PLEASE NOTE:

The gate must be installed between two structurally sound surfaces. Do not use 2 extensions on same side of gate.

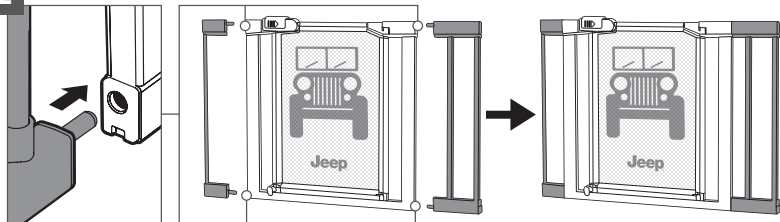
**PARTS
NEEDED:**



1 Insert Pins



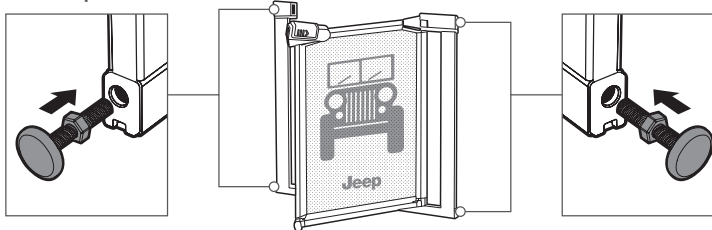
2



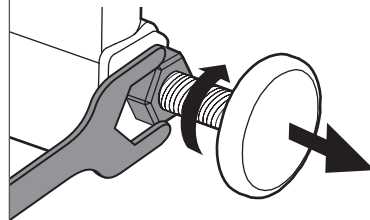
**PARTS
NEEDED:**



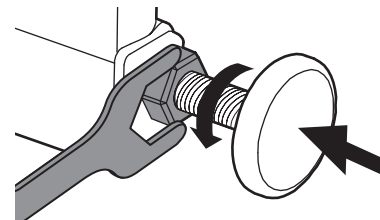
1 Insert Spindles



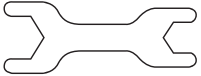
2 Tighten: Turn clockwise



Loosen: Turn counter-clockwise

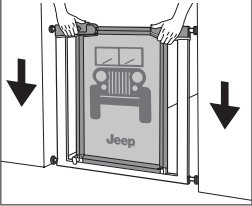


PARTS NEEDED:

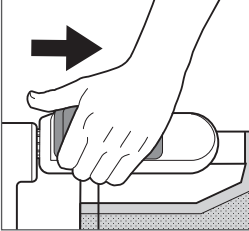


Before tightening handle needs to be opened.

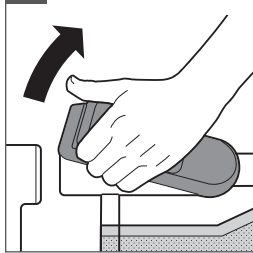
1 Place gate in center of doorway in the direction of opening



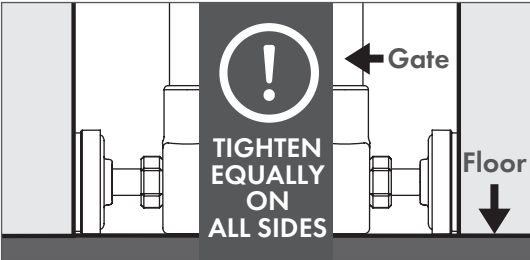
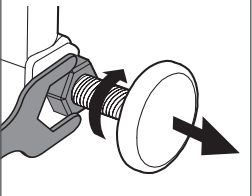
2 Pull back handle and hold



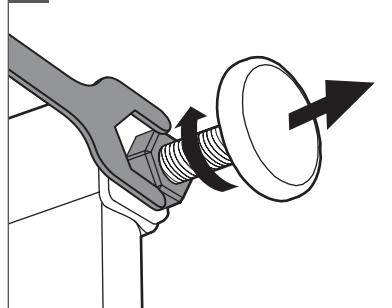
3 Pivot handle up



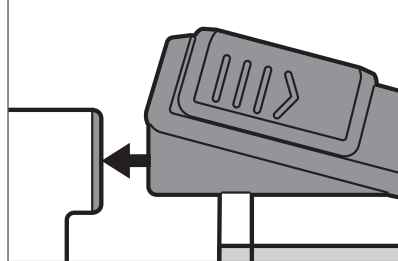
4 Tighten bottom 2 spindles equally



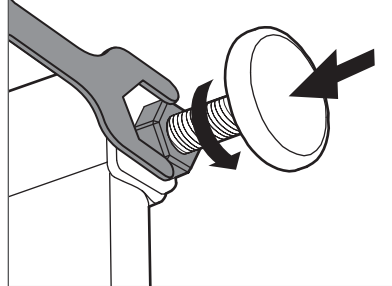
5 Tighten top 2 spindles



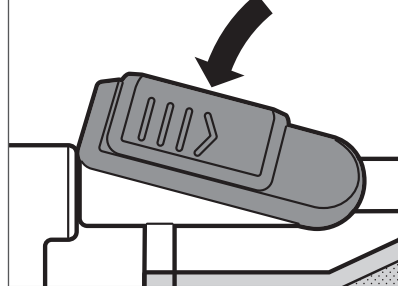
6 Continue tightening on both sides until the handle just touches opposing post



7 Loosen top spindle closest to handle by 2 turns



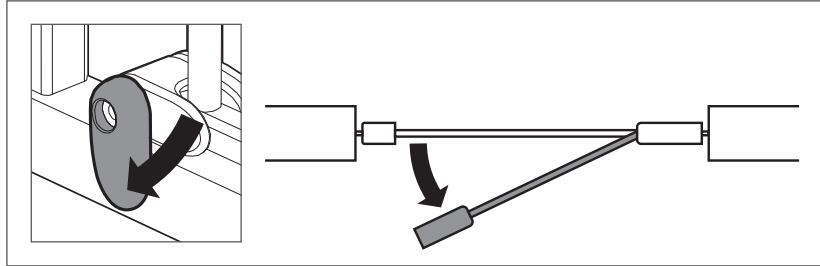
8 Push handle down to lock and install complete



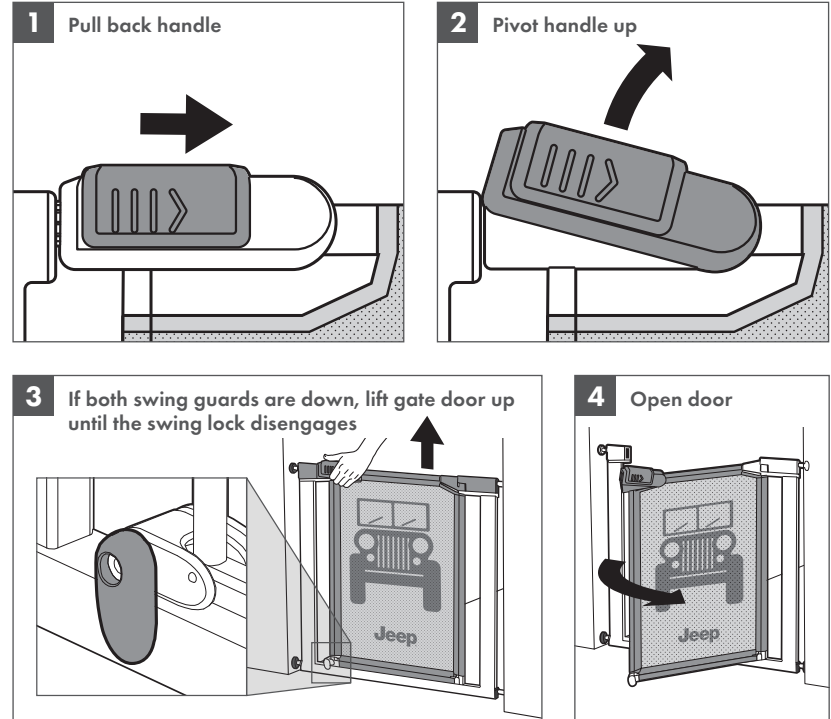
TWO-WAY FUNCTION

If the gate is placed at the bottom of stairs, always lower the swing guard into its locked position on the opposite side of the gate from the stairs. This prevents the gate from opening into the stairway.

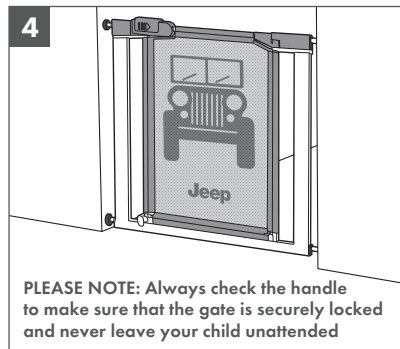
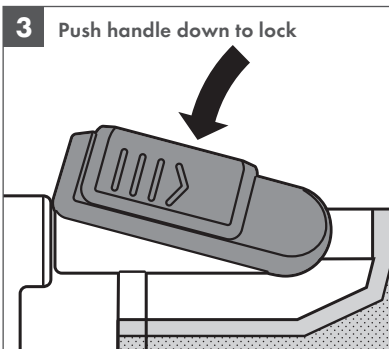
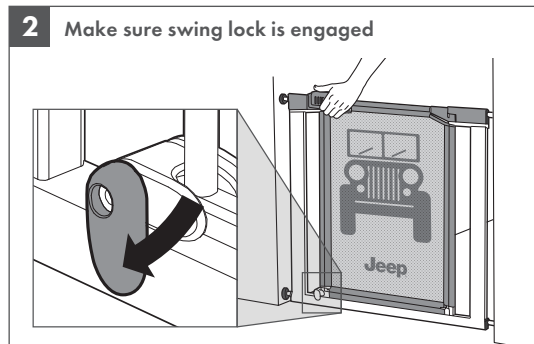
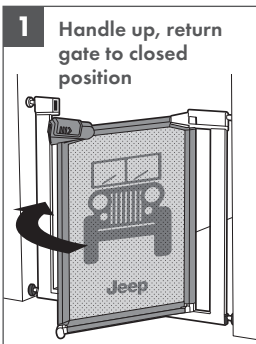
In other locations, be sure to lower the swing guard into its locked position on the side of the gate that the child occupies. If Child frequently occupies both sides of the gate, both swing guards can be lowered into the locked position.



TO OPEN

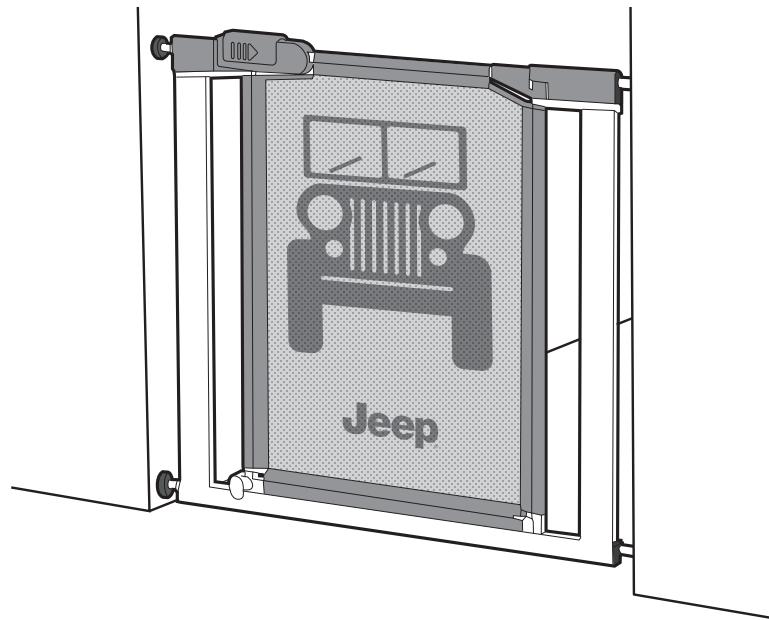


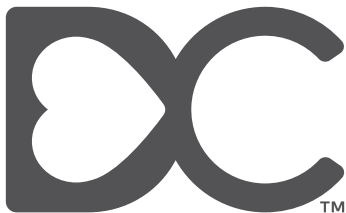
TO CLOSE



CLEANING YOUR GATE

Use mild soap and wipe with a damp cloth. Be careful NOT to wash or wipe the stickers on the base of the gate. Removing or damaging the stickers will void the warranty.





Delta Children's Products Corp.

114 West 26th Street
New York, NY 10001

646-435-8726

www.DeltaChildren.com

Made in China