

DELTA♥CHILDREN

The Clutch Travel Stroller

INSTRUCTION MANUAL

Read all instructions BEFORE assembly and USE of product. KEEP INSTRUCTIONS FOR FUTURE USE.

11362

Styles and colours may vary



**▲ WARNING:
CHOKING HAZARD**

Adult assembly required because of small parts. Keep assembly parts out of reach of children under 3 years.

WARNING

WARNING: Please follow all of these instructions to ensure the safety of your child. Keep these instructions for future reference.

WARNING: Failure to follow these instructions could result in serious injury or death. Avoid serious injury from falling or sliding out. Always use the safety harness and insure that the child is properly positioned according to these instructions.

WARNING: Never leave child unattended.

WARNING: CHOKING HAZARD

Adult assembly required because of small parts.

Keep (assembly parts) out of reach of children under 3 years.

Purses, shopping bags, parcels, diaper bags or accessory items may change the balance of the stroller and cause hazardous unstable conditions.

The maximum weight that can be carried in the basket is 3 lbs and in the parent tray is 3 lbs. Excessive weight may cause a hazardous unstable condition to exist.

Be certain the stroller is fully erect and latched in the open position before allowing the child near the stroller.

Use of the stroller with a child weighing more than 50 pounds or 40 inches will cause excessive wear and stress on the stroller and may cause a hazardous unstable condition to exist.

DO NOT use the stroller on stairways or escalators.

DO NOT use the stroller with roller skates or in-line skates.

Never allow your stroller to be used as a toy.

To clean use only mild household soap or detergent and warm water on a sponge or clean cloth.

Check your stroller for loose screws, worn parts, torn material or stitching on a regular basis. Replace or repair parts as needed.

Discontinue use of stroller should it malfunction or become damaged. Please contact our customer service Parts Hotline to arrange for repair or obtain replacement parts.

To prevent injury:

Make sure fingers and other body parts are clear of the stroller when folding and unfolding.

Make sure stroller is fully erected and into a fully locked position before placing child in the stroller.

This stroller may become unstable if a parcel bag, other than one recommend by the manufacturer, is used.

CARE AND MAINTENANCE

To clean the stroller use a mild household soap with warm water on a sponge or clean cloth.

Check your stroller for loose screws, worn parts, torn material or stitching on a regular basis. Replace or repair parts as needed.

Discontinue use of stroller if it should become damaged or malfunctions. Please contact our customer service GCS@DELTACHILDREN.COM to arrange for repair or obtain replacement parts.

If you experience any difficulty with assembly, missing parts or use, please **DO NOT** return this item to the store. Retail stores are unable to properly assist you. Contact our Customer Service Department directly for assistance GCS@DELTACHILDREN.COM



Before returning this product to the store! Let's see if we can assist you!

- **Not sure how to assemble our product?**

Visit our site for easy to follow instructions along with some Tricks and Tips assembly video's <https://www.deltachildren.com/pages/instructions>

- **If you are missing a piece or have a damaged part**

Please contact our Consumer Experience Center for assistance gcs@DeltaChildren.com. To better assist you please have your Style# or Model# and Lot# available. This can be found on a white rectangular sticker on your product, on the registration card, and on the product's box.

- **In the event we do not have a replacement part available**

You may need to return your product to the retailer for an exchange or refund.

- **Warranty**

In order to protect your investment, don't forget to register your product. You may also wish to consider purchasing our extended warranty.

Visit <https://www.deltachildren.com/pages/extended-warranty> for more details.

- **Please note:**

"All Final", "As Is" or Third Party/Liquidator sales are not covered under our Limited Limited Manufacturer Warranty..

DELTA♥CHILDREN

LIMITED MANUFACTURER WARRANTY

This Delta product is warranted to be free from defects for a period of 90 days from the date of purchase under normal use. This warranty extends only to the original retail purchaser and is valid only when supplied with proof of purchase, or if received as a gift, when the registration is on file with Delta. This limited manufacturer warranty does not cover the following:

- Products purchased as floor models or samples.
- Items purchased on an “as-is” basis, as a second hand product, or as a resale product.
- Items purchased at a Final sale, a “Going out of Business” sale, or a Liquidation sale.

TO REGISTER YOUR PRODUCT for important safety alerts and updates to your product please visit www.deltachildren.com

TO REPORT A PROBLEM, please log on to www.deltachildren.com and click the Consumer Care Tab, or contact us by email gcs@DeltaChildren.com

Date of Purchase: _____ (you should also keep your receipt)

EXTENDED WARRANTY

DON'T MISS YOUR CHANCE TO BE COVERED FOR ALL OF LIFE'S MISHAPS!

With Delta's Extended Warranty, you're covered for mechanical failure from normal use or if your item stops working due to normal wear and tear, plus all those unexpected surprises.

2 YEARS OF PROTECTION

For Additional Information:

Simply visit our Website, register your product, and add the Extended Warranty

<https://www.deltachildren.com/pages/product-registration>

Extended Warranty only available in the following States: Arkansas, Colorado, Delaware, District of Columbia, Georgia, Idaho, Illinois, Indiana, Iowa, Kansas, Kentucky, Louisiana, Maryland, Michigan, Mississippi, Missouri, Nebraska, Nevada, New Hampshire, New York, North Carolina, North Dakota, Pennsylvania, Rhode Island, South Dakota, Tennessee, Utah, West Virginia

PARTS



Stroller



Canopy



Shoulder Pads



ASSEMBLY

1

REMOVE STROLLER FROM BOX

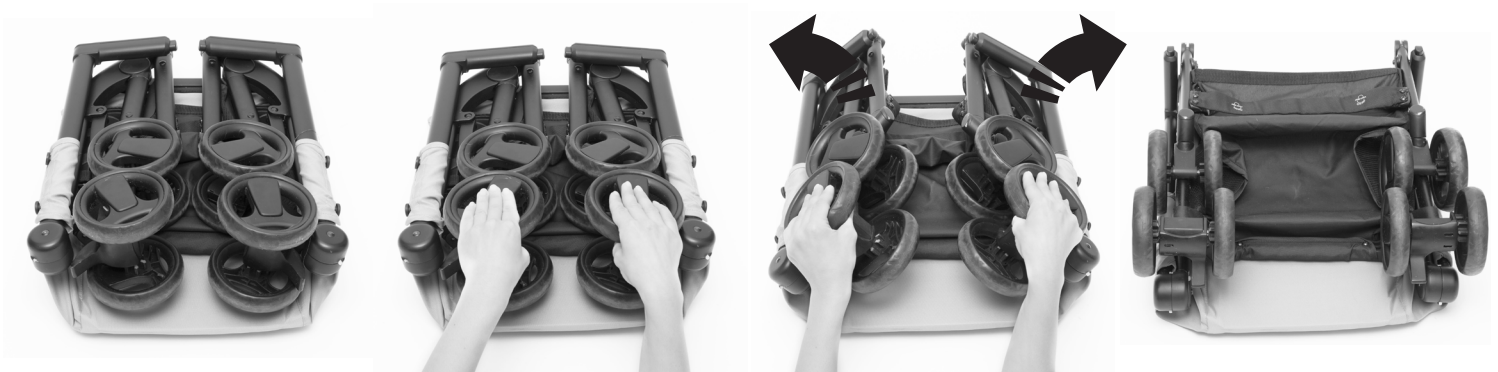


HOW TO FOLD & UNFOLD



SCAN QR CODE FOR
INSTRUCTIONAL VIDEO

2



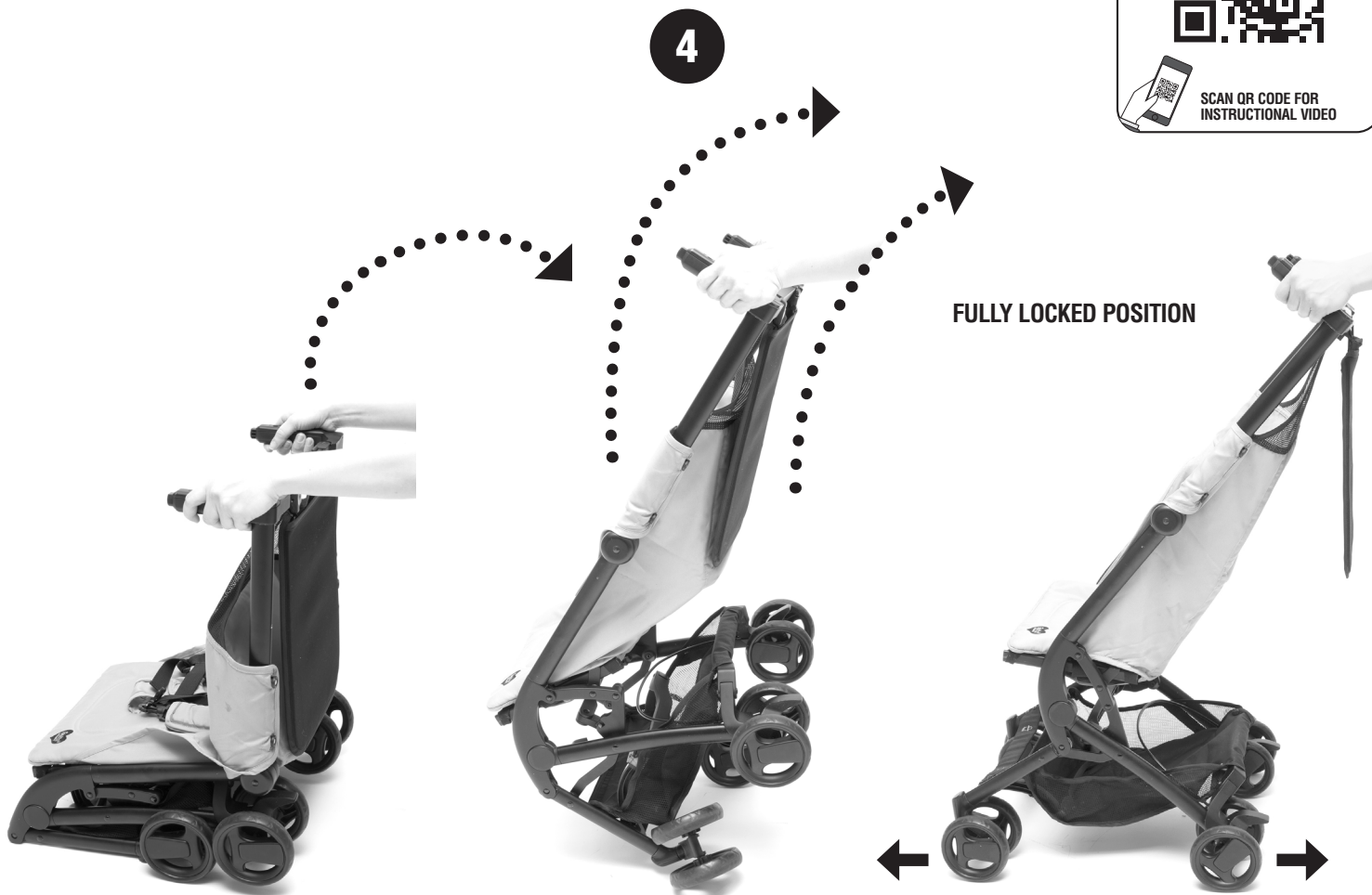
OPEN VIEW

ASSEMBLY

3



4



HOW TO FOLD & UNFOLD



SCAN QR CODE FOR INSTRUCTIONAL VIDEO

ASSEMBLY



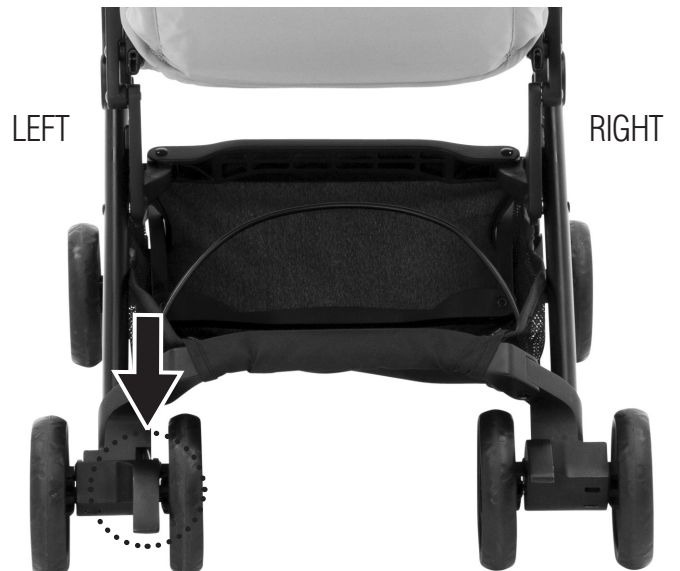
SET UP & USE

TO LOCK BRAKE



STEP ON RIGHT PEDAL TO LOCK

TO UNLOCK BRAKE



STEP ON LEFT PEDAL TO UNLOCK

SECURING CHILD

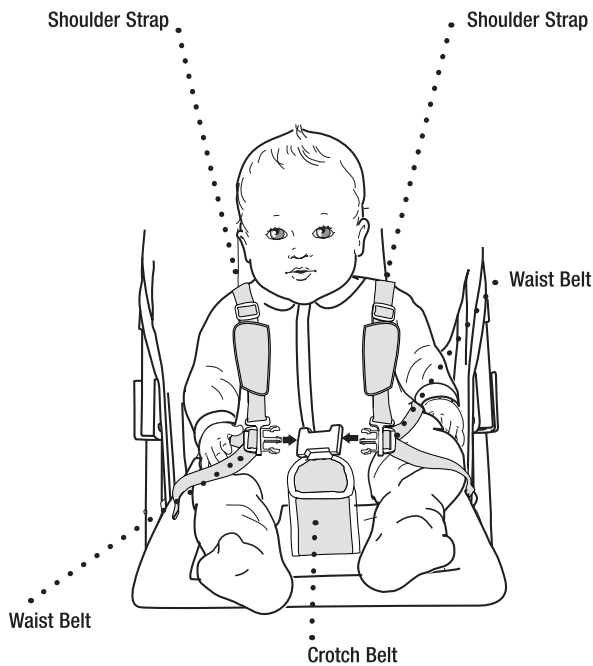
WARNING: Avoid serious injury from falling or sliding out. Always use the seat belt.

Before Placing your Child in Stroller:

Close Canopy. Press both brake pedals (in the back wheels) down until they “click” into a fully locked position.

Make sure the brake pedals are pressed down completely.

Always set both brake pedals when parking the stroller.

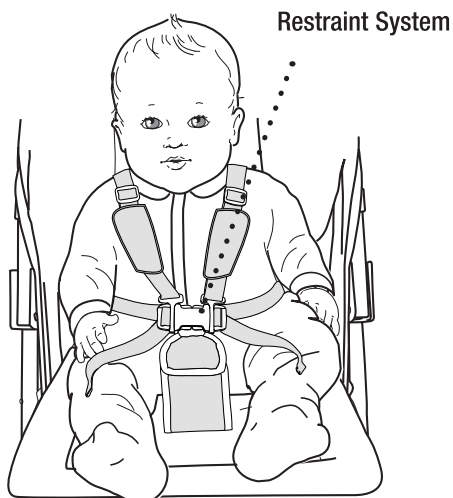


Place your child in the stroller. Position the **Crotch Belt** between your child's legs.

Pull **Shoulder Straps** over child's arm and shoulder and fasten **both** strap ends to the **Restraint System**.

Fasten **both Waist Belts** to the buckle on each side of the **Crotch Belt**. Make sure you hear a “click” on both sides.

Check to be sure the restraint system is securely attached by pulling it away from your child. The **Restraint System** should remain attached.



Tighten each **Waist Belt** and **Shoulder Strap** so that the **Restraint System** is snug against your child.

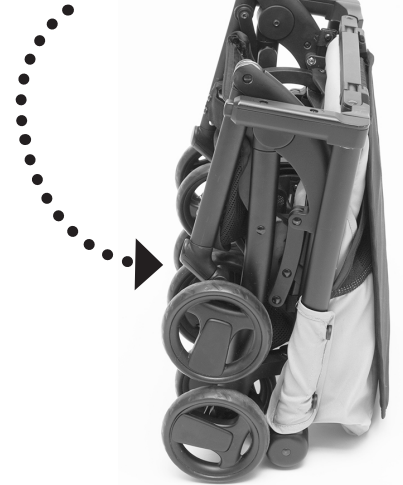
Please refer to the next section for instructions to tighten the Waist Belts.

FOLDING STROLLER

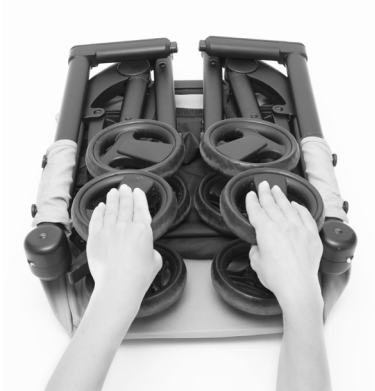


FOLDING STROLLER

3



4



CLOSE VIEW

DELTA♥CHILDREN

Delta Children's Products Corp.

114 West 26th Street
New York, NY 10001
www.DeltaChildren.com

**© 2023 Delta Children's Products.
All right reserved.**