

OPERATING MANUAL CONVENIO MANUAL SAFE SERIES



FEATURES



**MANUAL KEY
LOCKING SYSTEM**



**HEAVY DUTY
SHOOTING BOLT**

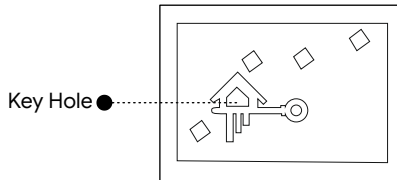
Convenio Manual-10/11/11S
Color - Black

OPERATING INSTRUCTIONS CONVENIO MANUAL SAFES

Ozone Convenio manual safe is designed to help you protect your valuables against theft.

Please install the safe in a cupboard or on a wall/floor and keep the emergency key in a safe place.

Keep the safe in a secret place for paramount security.



Accessories Include:

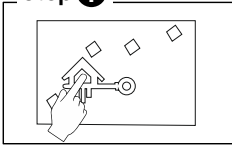
- 1) 2 Keys
- 2) 4 Mounting Bolts
- 3) Warranty Card

Specifications:

Model	External Size (HxWxD)mm	Weight (Kg.)	Volume (Ltr.)
Convenio Manual-10	200x350x200	5.9	10
Convenio Manual-11	250x350x350	7.9	15.50
Convenio Manual-11S	254x362x305	12.5	22

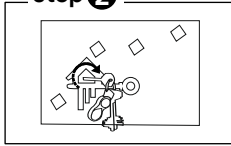
HOW TO OPEN A SAFE FOR THE FIRST TIME

step 1



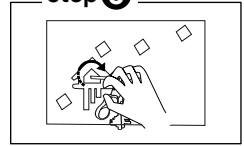
Use the manual key

step 2



Insert the manual key into the key hole

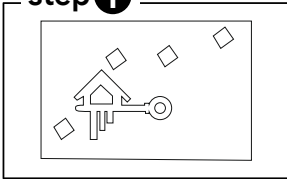
step 3



Rotate the key clockwise and open the safe

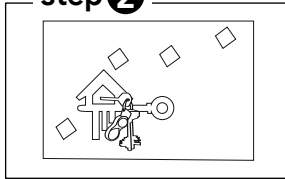
TO LOCK THE SAFE

step 1



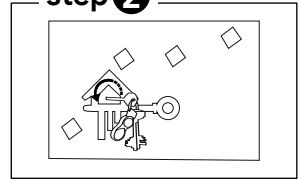
Close the door

step 2



Insert the key into the key hole

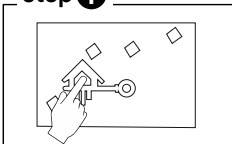
step 2



Rotate it anti-clockwise and close the safe

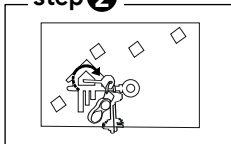
TO OPEN THE SAFE

step 1



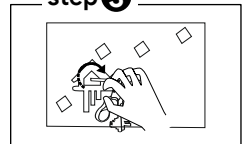
Use the manual key

step 2



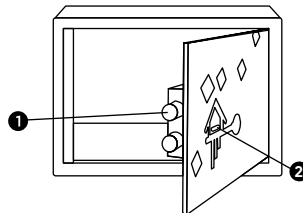
Insert the manual key into the key hole

step 3



Rotate the key clockwise and open the safe

1. Shooting Bolts
2. Key Hole



INSTALLING THE SAFE

Safe can be easily install in wardrobe or on wall.

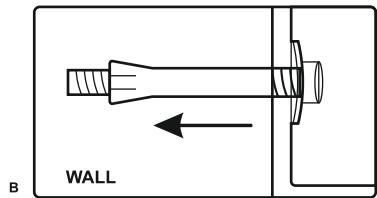
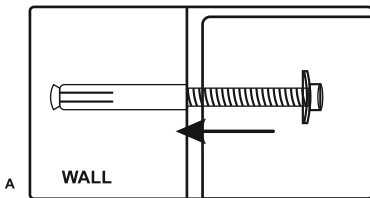
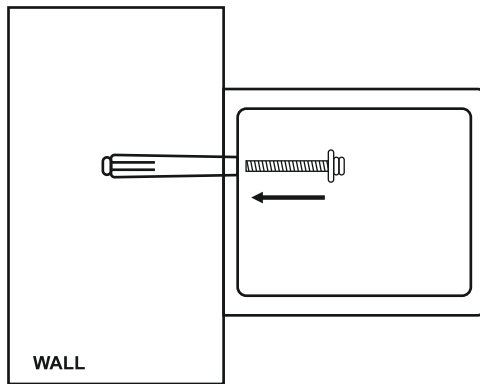
Fix the safe in the place which is not easy to move.

Drill holes for expansion bolts (or clamping screws)in the right place.

Turn the expansion bolts counter clockwise to separate.

Use the expansion bolts (or clamping screws) to secure the case to the wall.

Make sure the case is mounted in place as required and then tighten all screws.



Do's	Don'ts
1) On receipt of the safe, install it properly	1) Don't leave the safe in open position
2) Keep mechanical override key (Emergency Key) at a Safer place	2) Do not install safe in Moister areas
3) Please check the door properly after closing the door	3) Do not apply any extra force on the keys on opening and closing the door

OZONE DIGITAL SAFE- CHECK LIST

MODEL NO.: _____ SERIAL NO.: _____

DATE: _____ DATE OF DELIVERY: _____

CONTENTS:-

- | | |
|--------------------------|--------------------------|
| 1. MANUAL KEY | <input type="checkbox"/> |
| 2. PANEL KEY | <input type="checkbox"/> |
| 3. DRAWER KEY | <input type="checkbox"/> |
| 4. BATTERIES | <input type="checkbox"/> |
| 5. ADAPTOR | <input type="checkbox"/> |
| 6. RFID CARD | <input type="checkbox"/> |
| 7. FASTNER | <input type="checkbox"/> |
| 8. MANUAL | <input type="checkbox"/> |
| 9. OPERATION CHECK | <input type="checkbox"/> |
| 10. BODY DAMAGE (IF ANY) | <input type="checkbox"/> |
-

INSPECTED BY :- _____

CUSTOMER / DEALER SIGNATURE & SEAL

E-Mail : Info@ozonesecutech.com | Website: www.ozonesecutech.com
Customer Care: 9310012300