

User Manual

HG H1000 HIGH TIP

SUPER SKUB



HG H1000

Table of Contents

User Manual	1
Introduction	3
1. Safety	4
1.1 Read the manual	4
1.2 Education	5
1.3 The most frequent causes of accidents:	5
1.4 Preparation	5
1.5 Noise and vibration level	6
1.5.1 Vibration level	6
1.6 Operation	7
1.7 Maintenance	9
1.8 Transport & Towing	10
1.9 Disposal & dismantling	10
2. Function description	11
2.1 Control panel	11
2.2 Machine's operating units	12
3. Precautions before starting	13
4. Driving	15
5. Maintenance	17
5.1 Overview of maintenance	17
5.2 Towing and tipping in case of engine failure	18
5.3 Maintenance Points	19
6. FAQ	24
7. Hydraulic program	25
8. Technical specifications	26
9. Warranty provisions	27
10. EU declaration of conformity	28

Introduction

The **HG H1000 High Tip** is a high-quality dumper with an added benefit – the ability to unload directly over the rim and into containers and trailers. It is still user-friendly and comes with a low total cost of ownership. The high-tip function is particularly popular for work sites in tight spaces, such as cities, among rental companies, landscapers, contractors, and demolition companies. The HG dumper has total safety measures that ensure the highest safety standards for users while being able to load up to 1000 kg.

Find out more at:

www.hg-machines.com

- Minimal maintenance - built to last
- Increases on-site efficiency
- User-friendly and simple machine
- Excellent maneuverability and versatility
- High quality and low total cost of ownership
- Hydraulic high-tip enables container unloading

Manufacturer:**HG Machines ApS**

Vejlevej 15, 8722
Hedensted, Danmark

Bredgade 63 A
1260 København K, Danmark

+45 75 89 12 44
hello@hg-machines.com
www.hg-machines.com

HG Poland Sp. z o.o

Ul.Prosta 34 Lozienica
PI-72-100 Goleniów
NIP: PL 7010040430
+48 (91) 885 23 04

HG Bulk movement
made easy.

1. Safety

1.1 Read the manual

Please read this manual carefully and make sure that it is also read by other potential users of the machine. A hazardous situation may arise if the user is unaware of certain details about the machine.

If one of the warning labels is peeling off, worn or damaged, making the symbol illegible, replace the label.

WARNING!

Next to a piece of text in the manual indicates a risk of personal injury if the instructions are not observed.

WARNING!

Hot parts

Do not touch the engine or exhaust pipe during operation or immediately after the engine has stopped. Hot parts can cause serious burns.

WARNING!

Noise

We recommend the use of hearing protectors. Long-term exposure to noise damages your the hearing.

WARNING!

Poisonous gases

Do not let the engine run without adequate ventilation and never indoors, as the machine's exhaust poisonous carbon monoxide.



Manuals, parts lists and instructional videos can be found at www.hg-machines.com

WARNING!

Crushing risk

Do not touch the machine's moving parts. This applies to fingers and clothing as it may result in a loss of limbs.



WARNING!

Explosive liquid

Petrol is highly flammable and explosive, and may cause serious injury during filling.

We recommend stop the machine and keep it that you away from heat, sparks and flames, remove any spills immediately and fill it with petrol outdoors.



WARNING!

Danger

When servicing and parking the machine, the engine must be switched off and ignition key removed.

1.2 Education

- Read the instructions carefully. Please familiarize yourself with all controls, switches etc. and how to use the equipment correctly.
- Operators of the motorized wheelbarrow must be over 18 years of age and have normal mental and physical capabilities. National or local legislation may prescribe a different age limit for persons authorized to operate the motorized wheelbarrow in a given situation.
- Remember that the operator is responsible for accidents or hazardous situations involving other people or their property.
- The operator should be properly instructed in the use of the motorized wheelbarrow. These instructions should focus on the following:
 - 1) The operator must be careful and concentrated when working with self-propelled machines.
 - 2) The operator must be aware of what is going on in front of/behind the vehicle, particularly in areas where people may be moving about.

1.3 The most frequent causes of accidents

1. Lack of overview

2. The operator's knowledge of the vehicle is insufficient
3. Too steep terrain conditions
4. Substrate does not have sufficient stability
5. The vehicle is used in insufficient space

1.4 Preparation

1. Do not wear loose-fitting clothing when operating the vehicle.
2. Store fuel in canisters approved for this purpose and keep out of reach of children and unauthorized personnel.
3. Fuel fill is only permitted outdoors. Smoking is prohibited during filling.
4. Fill fuel before starting the engine. Never remove the fuel tank cover or fill fuel while the engine is running or hot.
5. In case of fuel spills, do not attempt to start the engine, but remove the motorized wheelbarrow from the location of the spill to avoid igniting it.
6. If you spill fuel on the exhaust pipe or the engine, wait until the fuel has evaporated due to the risk of fire.

7. If petrol or oil comes into contact with your skin, wash your skin thoroughly with soap.
8. Inhalation of fuel vapors or oil mists is harmful to health.
9. Ingestion of fuel or oil is life-threatening.

1.5 Noise and vibration level

When tipping with an empty tray and maximum revolutions, the highest energy-equivalent sound pressure level at the operator's position has been measured at 88 dB (A) in accordance with ISO 6396.

Under simulated operating conditions involving combined driving and tipping, the highest energy-equivalent sound pressure level at the operator's position has been measured at 87 dB (A) in accordance with ISO 6396.



The uncertainty of the measurements stated above is ± 2 dB. HG recommends the use of hearing protectors, even though the noise level is below the limit where hearing protection is required.

1.5.1 Vibration level

When tipping with an empty tray and maximum revolutions, the maximum weighted arm-hand

vibration level at the operator's position has been measured in accordance with ISO 1032 at:

$a_{hv} = 5.0 \text{ m/s}^2$.

Under simulated operating conditions involving combined driving and tipping, the maximum weighted arm-hand vibration level at the operator's position has been measured in accordance with ISO 1032 at:

$a_{hv} = 3.0 \text{ m/s}^2$.

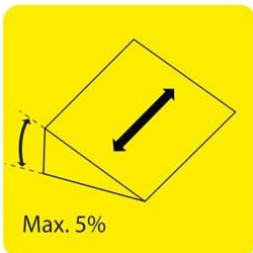
The uncertainty of the measurements stated above is $\pm 25\%$.

1.6 Operation

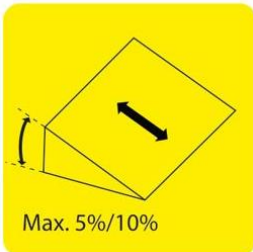
WARNING!

Failure to observe the following operating instructions may result in injury:

- When driving indoors, make sure you observe the rules and instructions in force on site.
- Do not use the machine in places with flammable dust or explosive gases.
- As far as possible, only use the motor barrow in daylight or in good artificial lighting.



Do not drive on slopes exceeding **5% (4,5 degrees)**.



Do not drive across slopes exceeding: **10° (10 degrees)** on hard surfaces such as concrete and asphalt. **5° (4,5 degrees)** on compacted ground such as gravel and grass.

- In case of overturning, let go of the machine and keep your distance. Never try to hold onto the machine.
- Be aware that the driving characteristics of the motor barrow change significantly between an empty and a full skip, as the

center of gravity of the motor barrow is higher when the skip is full.



Do not use the motor barrow with insufficient ceiling height.



NEVER drive on slopes with an empty or full container when HIGH TIP is activated.



Only drive on horizontal and stable ground when the HIGH TIP has been driven out.



Do not drive and unload close to excavations and unstable edges.

- Unloading of frozen loads or highly adhesive materials such as clay must not be performed by tipping, as the machine may tip over.
- Driving on soft, loose and uneven surfaces is prohibited, as the operator may be exposed to inappropriate loads on the body when operating the machine.

- When leaving the motor barrow, remove the ignition key and turn off the main switch.
- Always turn off the ignition and main switch before carrying out any service or repair works.
- Always turn off the ignition and main switch before charging the machine.
- Do not touch the motor or other electrical parts when the machine is on and/or running.
- The machine may only be used for transporting materials.



When reversing, the operator must pay special attention to uneven surfaces and objects that the operator may fall over or drive into.



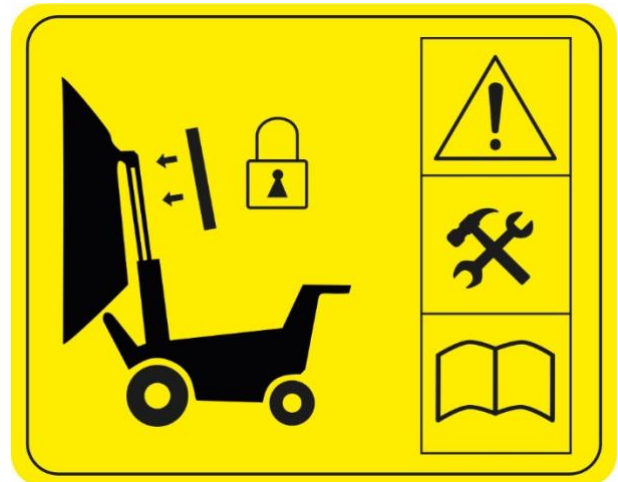
The operator must be aware of persons in the area so that they are not crushed under the truck bed when it is being lowered.

- The area around the machine must be kept tidy to avoid accidents caused by falling.

1.7 Maintenance

Each time the machine is used, visual inspection and inspection must be performed to ensure:

- That there are no leaks in the hydraulic system by hoses, tank etc.
- That there are no worn or damaged cables.
- That bolts, nuts, etc. are properly tightened.
- That the radiator grille and radiator fins on the motor are free of dirt.
- That no hydraulic oil has been spilled on or around the machine.
- That the motor barrow is stationary when the propulsion lever is not activated.
- That the safety plate activates forward movement when activated.
- That the tires have the correct pressure and are lubricated.



WARNING! Always fit the safety bracket of the tipping cylinder before starting the inspection work.

1.8 Transport & towing

To tow the machine without starting the engine, activate the coasting button on the left-hand side. This will disengage the drive wheels, allowing the machine to be moved.

When lifting the machine, use the three lifting points in front and on the control panel.



Ensure sufficient stability during lifting to prevent disconnection.

The machine may **ONLY** be lifted when the tray is empty.



The machine may only be transported using a vehicle with sufficient headroom as there is a risk of serious injury and damage to the operator,

machine and transport vehicle.

During transport, make sure that the machine is securely fastened to the tray or in a cargo compartment in accordance with the applicable regulations.

1.9 Disposal & dismantling

When, many years from now, the motorized wheelbarrow is worn out and must be disposed of, Hedensted Gruppen will carry out the dismantling work by arrangement, as this work must be carried out in an environmentally friendly manner. During the dismantling process, the parts are sorted according to type of material. This means that steel parts are classed as steel, rubber seals as rubber and so forth. The various materials are then disposed of according to the regulations in force at any time.

2. Function description

2.1 Instrument panel

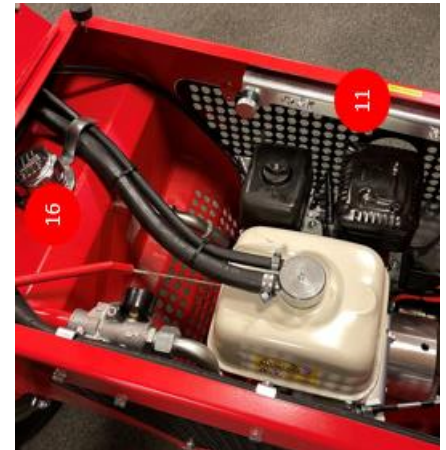


- 1) Operating handle for tipping the vessel.
Press up to tip off and down to lower the bed.
- 2) Control handle for High tip function. Press up for the container to lift. Press down for the container to lower
- 3) Control handle for choke.
The handle is pressed down to activate the choke.
- 4) Free coupling of propulsion.
Turn the knob counterclockwise to disengage the wheels so the machine can be pushed. The propulsion is switched on again by pressing the button in and turning clockwise.
- 5) Emergency stop/safety plate.

When the plate is affected, forward travel is activated, so that the operator does not run the risk of being trapped.

- 6) Control handle for driving backwards.
The handle is clamped up against the handlebar. The more the lever is squeezed, the higher the speed.
- 7) Control lever for throttle (engine revolutions).
The handle is pressed down to give the engine gas.
- 8) Control handle for driving forward.
The handle is clamped up against the handlebar. The more the lever is squeezed, the higher the speed.

2.2 The functional units of the machine



- 9. Petrol filling – 92 octane unleaded.
- 10. Sight glass for checking hydraulic oil level.
- 11. Tip protection for the tub's hydraulic cylinder.
- 12. Control and engine oil fill.
- 13. Hydraulic filter with service indicator.
- 14. Key start.
Used to start and stop the engine.

15. Recoil start.
Used to start in the event of a power failure.

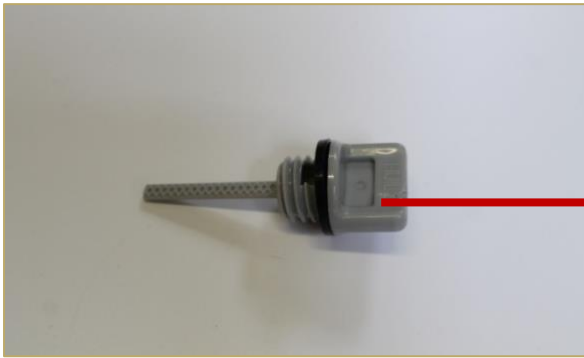
16. Filling of hydraulic oil

Releaser. If the release lever is pushed down, the motor is disconnected and the machine can be pushed. If the handle is pushed up, the motor is switched on and the machine can be operated via the control handles.



3. Precautions before starting

Check engine condition



Oil must be visible on the dipstick or top up with type SAE 15W-40 engine oil, if necessary.

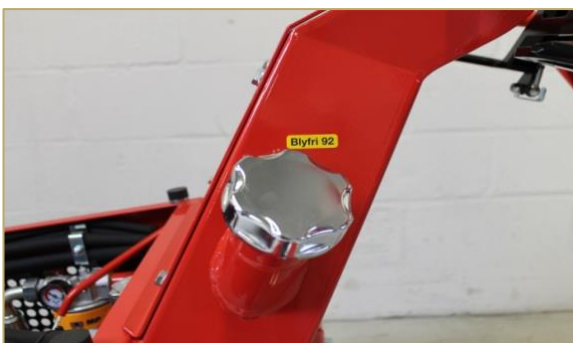
Check hydraulic oil level:



WARNING! Fit the tipping protection.

Top up with type Q8 Handel 46 hydraulic oil or similar, if necessary

Petrol fill

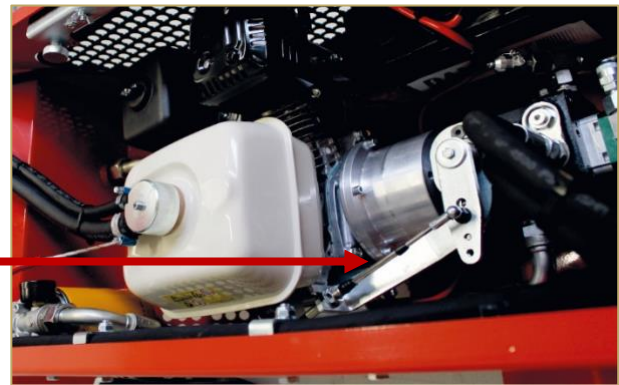


Use unleaded petrol, 92 octane or higher.

WARNING!

Petrol is a highly flammable and explosive liquid. Leave the machine to cool for at least 10 min. before filling and keep it away from ignition sources.

Seek medical attention if you have inhaled vapors or swallowed petrol.



Tyre pressure and retightening:



All tyres must have the right air pressure in order to ensure optimum ergonomics.

Tyre pressure, drive wheel: 85 psi/8.5 bar

Tyre pressure, guide wheels: 71 psi/7.1 bar



Retighten the wheels once a week.

Torque: 100 Nm.

Service indicator on hydraulic filter

The indicator gauge on the hydraulic filter indicates whether the filter needs servicing or replacing.

Apply full throttle, and check the indicator. If the indicator is in the red area, the machine needs servicing.



Safety plate test



Pressing the safety plate should move the machine forward, preventing the operator from being trapped during reverse.

Check the plate when the machine is switched on.

Press the plate, and check that the machine is moving forward.

The system must be undamaged and be able to move effortlessly.

The system must be undamaged and able to be moved without difficulty.

4. Driving



Start the machine by activating the choke when the engine is cold and then turning the ignition key clockwise. When the engine is running, release the key and adjust the choke until the engine is running smoothly. Adjust the throttle to the desired engine revolutions.

The choke is deactivated after a while.

If the engine is warm, it is not necessary to use the choke.



Place both hands on the handle bar so that your fingers can reach the forward handle. Pull up the hand lever on the right to move the machine forward and release to stop. Pull up the hand lever on the left to reverse.

Before reversing, check for people and obstacles behind you.

The direction of the machine is controlled by pulling the handle bar to the right or left while the machine is moving forward. Do not attempt to control the direction, while the machine is standing still as this will put considerable strain on the body.

WARNING!

The machine should stop immediately and come to a complete standstill when releasing the forward and reverse handles. If the machine 'crawls' slightly, it must be taken out of service immediately, and the fault repaired.



To tip the tray, push the tipping lever up with your left hand, while keeping your right hand on the handle bar. Use the lever to adjust the speed: the more you push it, the greater the speed.

Before lowering the tray, the operator must check that no people are within the machine's range. Lower the tray by pushing down the

tipping lever with your left hand, while keeping your right hand on the handle bar. Wait until the tray is lowered completely, and place both hands on the handle bar before pulling the forward handle.

WARNING!

If the machine tips over, let go of the machine and step away from it. Never attempt to keep the machine steady.

Before leaving the machine, make sure the tray is lowered completely, the throttle hand lever is in the uppermost position and the engine is switched off with the key. Remove the key from the machine before leaving the machine for an extended period of time.

Operation of the High Tip function

The container is operated by pressing the handle up or down, while the right hand is still kept on the control handle. Before activating the functions, the operator must inform and ensure that no one is within the machine's range of motion.

When activating the handle, the right hand must remain on the control handle. Wait until the container is completely down and place both hands on the control handle before activating propulsion.

- High Tip lift: Press handle up, the entire container will now rise up, when the

container cannot rise right, release the switch again.

- High Tip lower: Press handle down, the entire container will now lower to normal position, when the container cannot be lowered any further, release the contact again.
- Tip container up: Press handle up, the entire container will now tip, when the container cannot be tipped right up, release the switch again.
- Tip container down: Press handle down, the entire container will now tip down, when the container cannot be tipped down any further, release the switch again.

WARNING!

In case of overturning, release the machine and take a distance. Never try to hold the machine.

Before the operator leaves the machine, the container must be down and the machine switched off at the key switch. If the machine is left completely, the key must be removed from the machine and the main switch placed in the broken state.

5. Maintenance

5.1 Overview of maintenance

Activity		For each xx operating hours					
		Daily	3 m.	20 hours	50 hours	100 hours	300 hours
Check	Hydraulic oil level	x					
	Engine oil level	x					
	Air filter (in a very dusty environment)	x					
	Wheel air pressure	x					
	Function of the safety plate	x					
	Leaks	x					
	Coasting valve		x				
	Bolts and nuts are tightened		x				
Adjustment	Spark plug					x	
	Release button		x				
	Safety plate		x				
Lubrication	Pendular suspension		x				
	Wheel		x				
Re-tightening	Wheel		x				
Cleaning	Spark plug					x	
	Sediment in carburettor					x	
	Air filter		x			x	
Replacement	Air filter						x
	Engine oil			First		x	
	Engine oil filter			First		x	
	Hydraulic filter			First		x	
	Hydraulic oil			First		x	
	Warning signs as needed		x				
	Spark plug						

First = replaced when the machine has run 20 hours.

Components must be checked as recommended by the supplier. Hedensted Gruppen requires that a comprehensive service inspection of the machine be carried out by an authorized service technician at least once a year. Safety features such as the release button and safety plate must be inspected every three months. All maintenance must be carried out by a trained mechanic, service technician or similar professional.

5.2 Towing and tipping in case of engine failure



The coasting button is used to disengage the drive wheels, allowing the motorized wheelbarrow to be moved when the engine is off. Turn the button counter-clockwise to disengage. Push the button and turn clockwise to re-engage the engine.

WARNING!

The machine's parking brake cannot be operated when disengaged. Place a suitable object on both sides of the wheels when leaving the machine.



HG does not recommend leaving the machine in disconnected mode.

With the help of two people, the container can be tipped to the side. High Tip does not need to be raised as shown in figure pos. 24. Alternatively, the machine's container can also be tipped without High Tip being activated figure pos. 27 and 28.

The advantage of an activated high tip or only tipped container is that the container can thereby be placed directly on the surface on which the machine stands. See figure pos. 23

If the high tip is not activated, the container, when it is tipped to the side, must be supported by a suitable stable object, which may be support trestle with an approved carrying capacity of at least 200kg. See figure pos. 25



WARNING!

In this case, it must always be ensured that the container is tipped at least 125° degrees above the horizontal surface where the container has its normal position, precisely to avoid the container falling back.

5.3 Maintenance Points



Safety fittings

Mount the safety fitting on the tipping cylinder before carrying out maintenance. Loosen the two finger screws, and remove the fitting from the inside of the machine. Remove the large finger screw, and fold out the fitting. Place it over the cylinder rod, and screw on the finger screw to lock.



Draining hydraulic oil

Place a suitable container under the hydraulic oil tank and remove the plug. The tank must be able to hold 17 liters. Clean and refit the plug when the oil has been drained from the tank.

WARNING!

Be careful as the oil may be very hot!



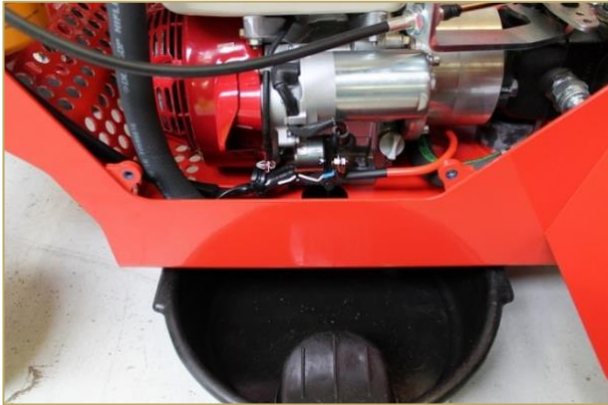
Replacing the hydraulic filter

Place a suitable container under the machine near the filter. Loosen the filter, and unscrew it. Lubricate the gasket on the new filter with oil, and screw it on. Tighten the filter firmly by hand.



Hydraulic oil fill

Using a clean oil can, add approximately 17 liters of type Q8 Handel 46 hydraulic oil or similar. Check the oil level in the sight glass on the left-hand side of the machine.



Changing the engine oil

Place a suitable container under the hydraulic oil tank and remove the plug. Clean the plug, replace the gasket and refit the plug when the oil has been drained from the tank.

Using a clean oil can, add approximately 0.6 liters of type SAE 15W-40 engine oil. The oil level must reach the top of the thread. Check the oil level with the dipstick.

WARNING!

Be careful as the oil may be very hot!



Sediment in the carburetor

Place a suitable container under the machine near the carburetor. Close the fuel tap, and remove the drain plug on the side of the float bowl. Replace the gasket and refit the plug. Open the fuel tap again.



Air filter

Remove the cover and filter by loosening the two finger nuts.

Clean the foam filter and paper filter with compressed air or replace them. Refit the foam filter around the paper filter and then mount it on the engine with the metal nut. Mount the cover with the plastic nut.



Replacement of spark plugs

Remove the spark plug with a 21 mm spanner by turning counter-clockwise. Clean the spark plug and adjust the electrode distance to 0.70-0.80 mm. Replace the spark plug if necessary. Always screw on the spark plug by hand. If a new spark plug is fitted, tighten it another half turn to seal the gasket. If a used spark plug is fitted, only tighten it another one-eighth to one-quarter turn.



Lubrication

Standard high-pressure grease can be used for lubrication.

Lubricating nipples are mounted on:

- Guide wheel suspension, rocker shaft.
- Guide wheel, pivot shaft.
- Guide wheel, shaft.



Retightening the wheels

Retighten the wheels once a week.
Tightening torque: 100 Nm.

Replacement of signs

Replace warning and safety signs if they are illegible.

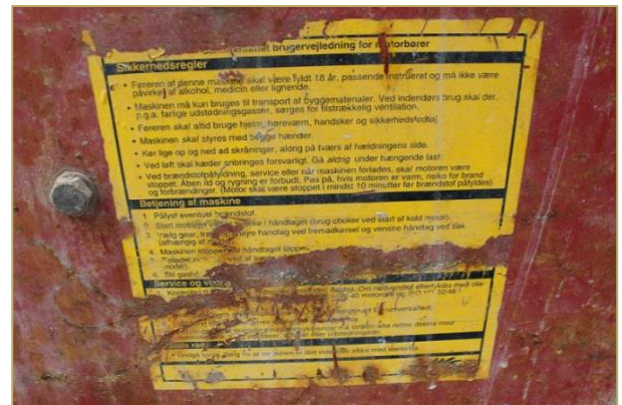


Wheel air pressure

All tyres must have the right air pressure in order to ensure optimum ergonomics:

Tyre pressure, drive wheel: 85 psi/8.5 bar

Tyre pressure, guide wheels: 71 psi/7.1 bar



Adjusting the zero point

The machine's zero point ensures that the machine stands still when the forward/reverse handle is not activated.

Adjust the zero point if the machine crawls backwards and forwards slightly when the handle is not activated. The machine must be warm and stand on a level floor when carrying out the adjustment.



Serial no. 280100-001-2016 and onwards

Loosen the lock nut (1) on the underside of the eccentric bolt (2) with a 13 mm spanner. Turn the eccentric bolt (2) to the right or left until the machine has come to a complete stop. Then tighten the lock nut (1) again.



Adjustment of safety plate

Pressing the safety plate should move the machine forward, preventing the operator from being trapped during reverse. When the machine has moved away from the operator, it should stop.

Loosen the two lock nuts with a 13 mm spanner. Remove the cotter bolt from one angle joint, and remove the head from the ball. Now turn the angle head in or out as required.

Mount the angle head and the cotter bolt, and tighten the lock nut. Check that the plate, tubular pins, bolts and nuts holding the shafts and connections are undamaged. Use your thigh to test if the machine moves forward when the plate is activated. The machine should move before your thigh touches the round handle bar.



Coasting valve

When the valve is set to coasting, the machine's drive wheels should not be able to rotate and the machine should not move.

Check that the valve button is not damaged.

Adjusting the tipping lever

The stop on the tipping lever reduces the speed of the lowering function to prevent the hose burst check valve from being activated.

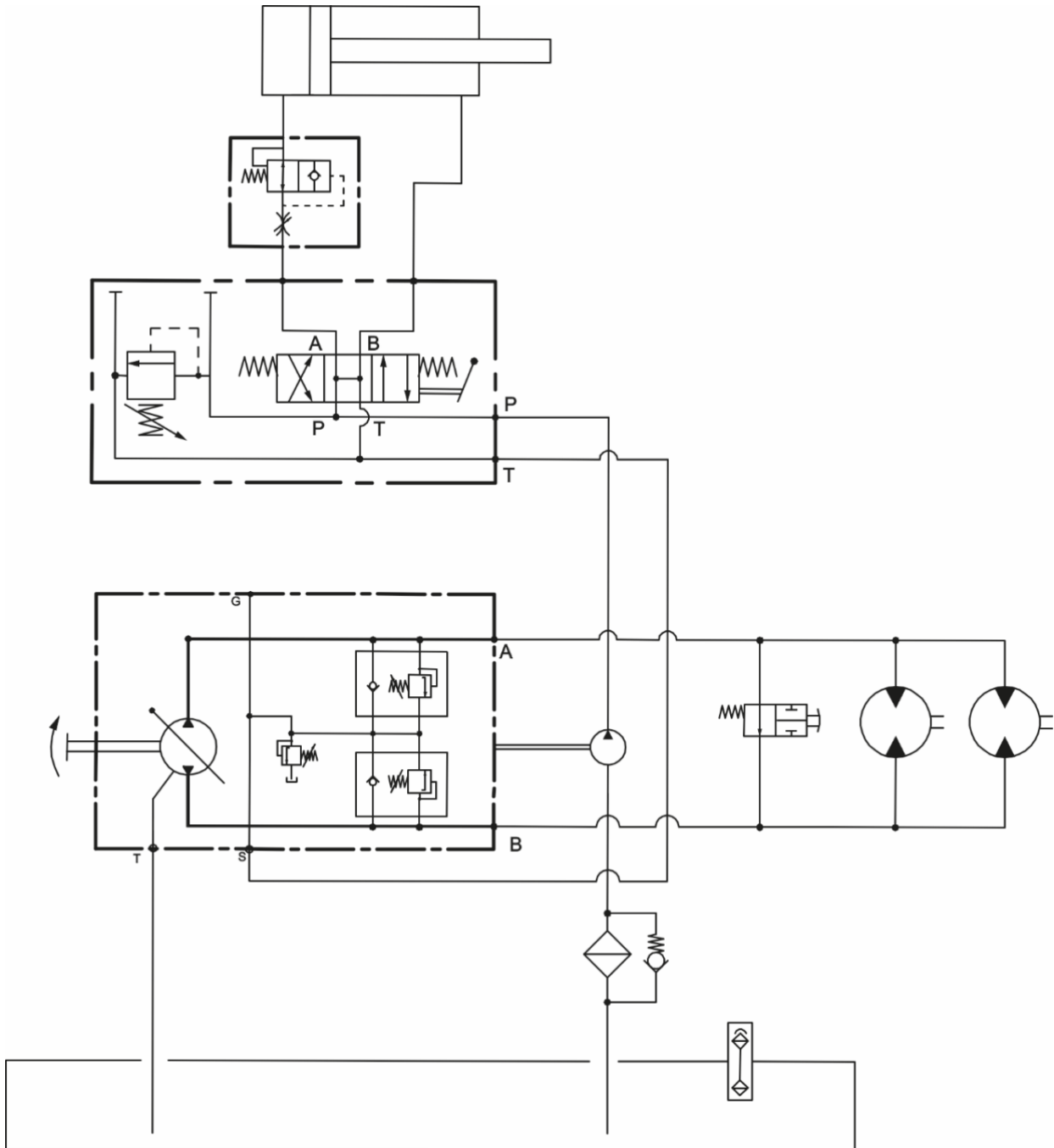
Adjust the stop so that the load is lowered at an even speed, but the engine does not sound strained.



1. FAQ

Problem	Possible cause	Solution
The machine will not start.	The oil guard is activated.	Check oil level and top up.
The machine will not pull.	The freewheel valve is activated.	Push in the freewheel button and turn clockwise to lock.
The machine is difficult to control.	The air pressure in the steering wheel is too low.	Pump up wheels to max pressure.
The engine stalls when the load is lowered.	Hose use valve is activated when the bed is lowered.	Adjust the stop on the tip handle so that the lowering speed is reduced.
The machine creeps when idling.	Propulsion system release is not adjusted correctly.	Adjust the free positioner's 0 point.
The hydraulic system lacks power.	The centrifugal clutch is worn.	Change trays in the centrifugal clutch.
The engine is difficult to start or stalls.	Water in the petrol.	Change the petrol and settle the carburetor.
The engine is difficult to start.	The spark plug is worn or defective.	Replace the spark plug.
The machine does not run straight.	Steering wheel or wheel suspension is damaged and steers crooked.	Replace wheels or suspension.

7. Hydraulic program



8. Technical specifications

Specifications	
Width	850 mm
Length	2050 mm
Height	1080 mm
Own weight	415 kg
Content in liters	400 L
Content in kg	1000 kg
Reading height	125 cm
Driving speed	0-6 km/t
Reverse speed	0-3 km/t
Engine	
Type	Honda GX200 Stage V – Electric start Centrifugal clutch before cold start Transmission, stepless hydrostatic forward/reverse
Performance	6.5 HP
Clutch	Centrifugal
Petrol tank	3.6-litre petrol – 92 Octane, unleaded
Other things	
Leave function	Hydraulic tip with three-way manual valve. Tip cylinder, double acting
Hydraulic tank:	17 liters Handel 46
Drag wheels	LP 190 x 8 x 6 ply
Forked wheels	4.00-4
Sound pressure:	Lpa, eq = 88 dB(A) maximum (Measured at tip with empty box and maximum revolutions) Lpa, eq = 87 dB(A) simulated operation (Measured by simulated operating conditions between driving and tipping) Uncertainty in the above measurements is +/- 2 dB
Vibrations	Weighted arm/hand level - 5 m/s ² max. (Measured at tip with empty box and maximum revolutions) Weighted arm/hand level - 3 m/s ² simulated operation. (Measures for simulating operating conditions between driving and tipping) The uncertainty of the above measurements is +/- 25%

9. Warranty provisions

Warranty period

HG Machines provides a guarantee for 12 months. The warranty period begins on the date of delivery.

The warranty includes

Components that must be replaced or repaired due to material or manufacturing defects.

The warranty does not cover wear and consumable parts such as:

Tires and hydraulic oil

The manufacturer's warranty expires if

The machine is used incorrectly.

The machine is used without following the instruction manual and the safety regulations.

The machine is not maintained according to the instructions or outdated spare parts are used.

The machine is used after a fault has been detected, so this results in a more expensive repair than the original fault.

When converting or connecting other electrical parts.

The owner's own insurance should cover

Fire, burglary, theft and vandalism.

Water and frost damage.

Damage caused by wind and weather.

The manufacturer's warranty does not apply in these cases

The manufacturer's approval of a claim for compensation requires that the defective part is shown to the manufacturer or its representative within two weeks after the damage has occurred. Owner rights to the damaged part(s) are transferred to the supplier of the new parts.

According to the warranty only replaces components. It therefore does not cover

Shipping costs.

Costs related to waiting time, machine owner working time and travel costs.

Operating losses and other subsequent costs.

Other things

Prior to repair under warranty, the manufacturer must be contacted to agree the procedure. If the repair has been initiated or completed, it is too late to claim the warranty.

These warranty provisions can only be changed through a separate agreement.

10. EU declaration of conformity

HG Machines ApS
Vejlevej 15
DK-8722 Hedensted
Tel. (+45) 75 89 12 44
www.hg-machines.com

hereby declares that:

Super Skub model HYDRA with recoil start
Type number 280121
Super Skub model HYDRA with electric start
Type number 280125
Super Skub model HYDRA with electric start
Type number 280100

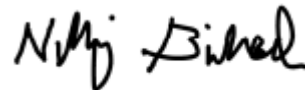
is in accordance with:

- Machinery Directive 2006/42/EC
- EMC Directive 2014/30/EU
- Directive on machines for outdoor use - 2000/14/EC

using the following harmonized standards:

- DS EN ISO 12100:2011
- DS EN ISO 13857:2008

Hedensted, 15. februar 2023



Nikolaj Birkerød
Direktør