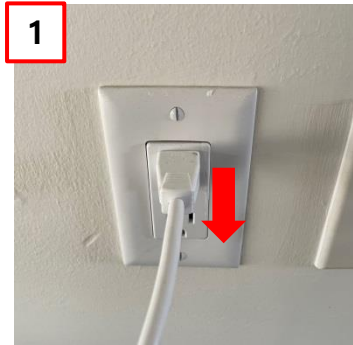


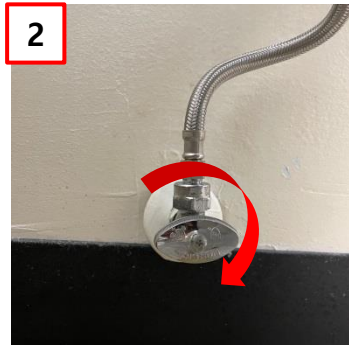
# **HOW TO RESOLVE HEATED SEAT MALFUNCTIONING-BIDET TOILET (SEAT REPLACEMENT)**

## How to resolve heated seat malfunctioning(Seat replacement)

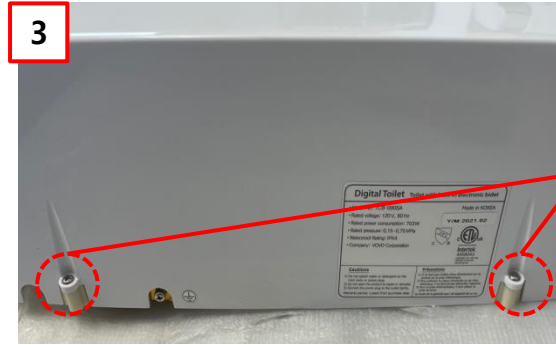
### 1. Open the cover base



① Unplug the cord



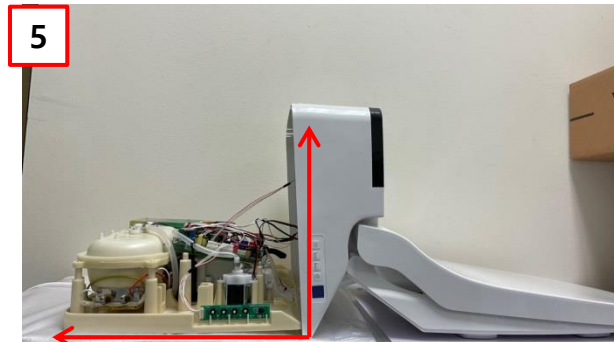
② Close the water valve clockwise



③ Unscrew the 2 screws at the back using a Philips head driver.



④ Detach the cover base by pulling it to the arrow direction as above.



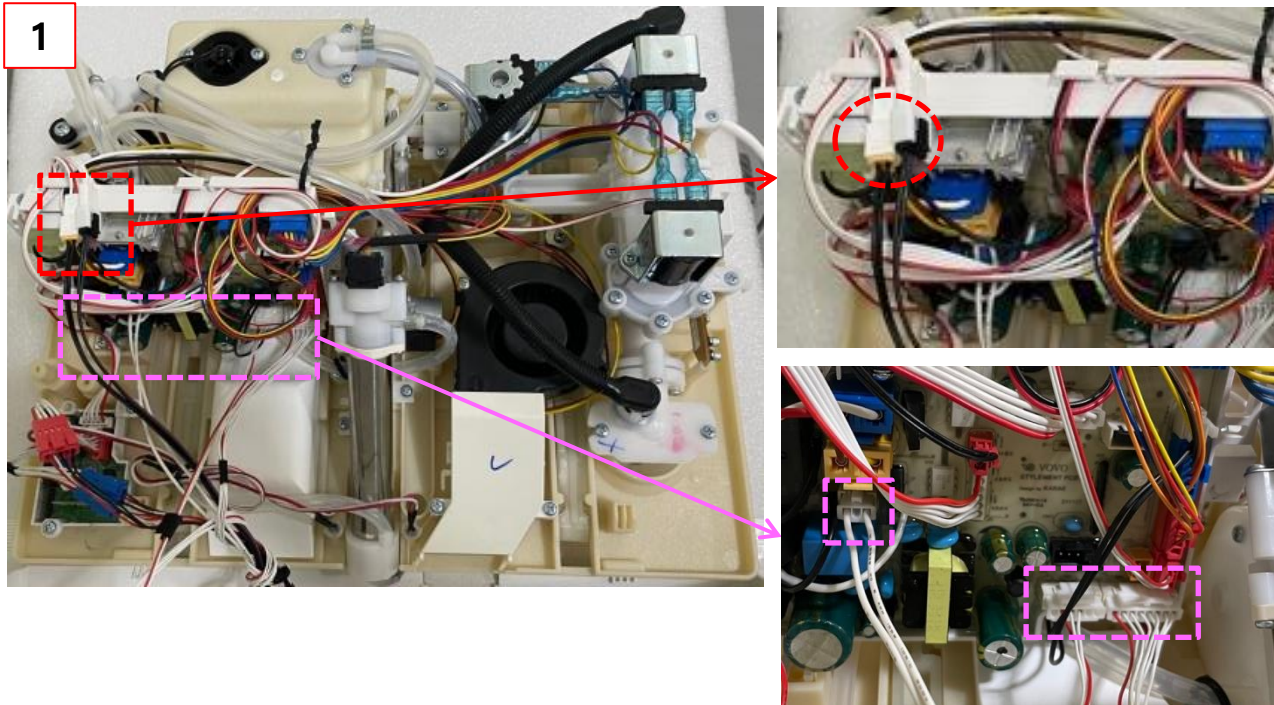
⑤ Make sure that the degree between the ground and the cover base is shown as in the above picture to avoid any wire damage.



[Click for the Video Guide](#)

## How to resolve heated seat malfunctioning(Seat replacement)

### 2. Detach the seat harness



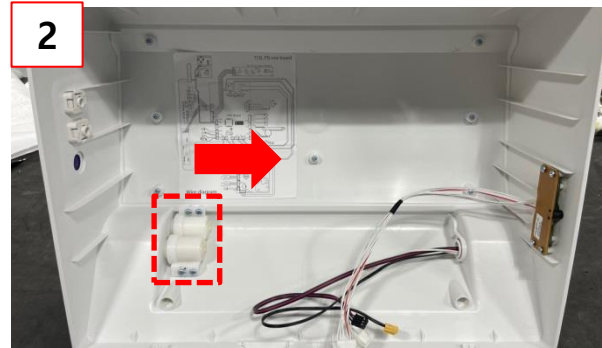
① Detach any connection that connects the MAIN PCB and the seat wire harness.

## How to resolve heated seat malfunctioning(Seat replacement)

### 3. Detach SEAT COVER, SEAT



① Place the bidet like the photo



② Unscrew the 4 screws that is connected with the damper and detach it in the direction shown in the photo.



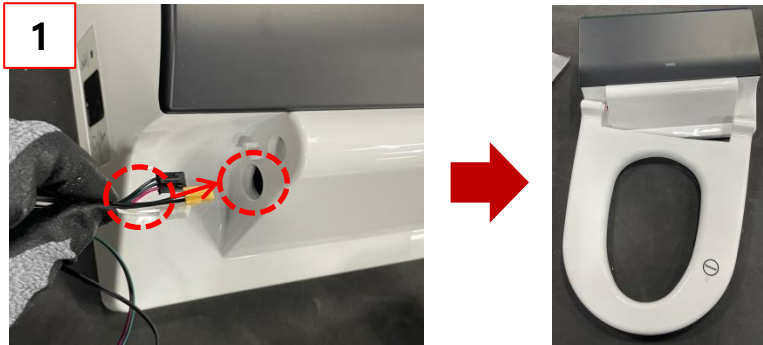
③ Detach the Seat cover in the direction shown



④ Detach the Seat in the direction shown

## How to resolve heated seat malfunctioning(Seat replacement)

### 4. How to replace the SEAT



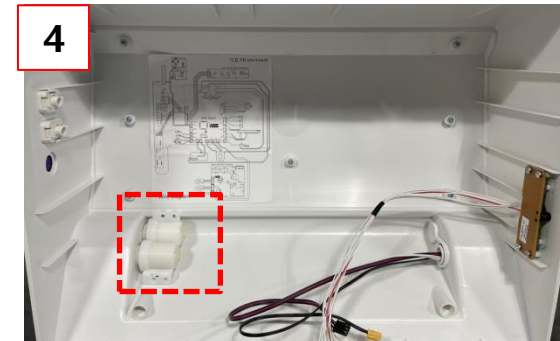
① Put the seat harness wires inside the hole and attach the seat



② Attach the SEAT COVER shown in the photo



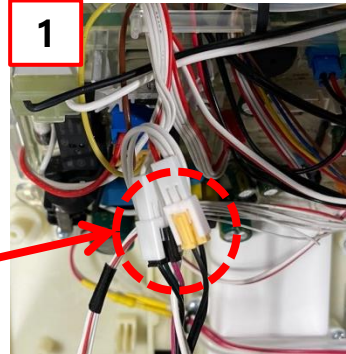
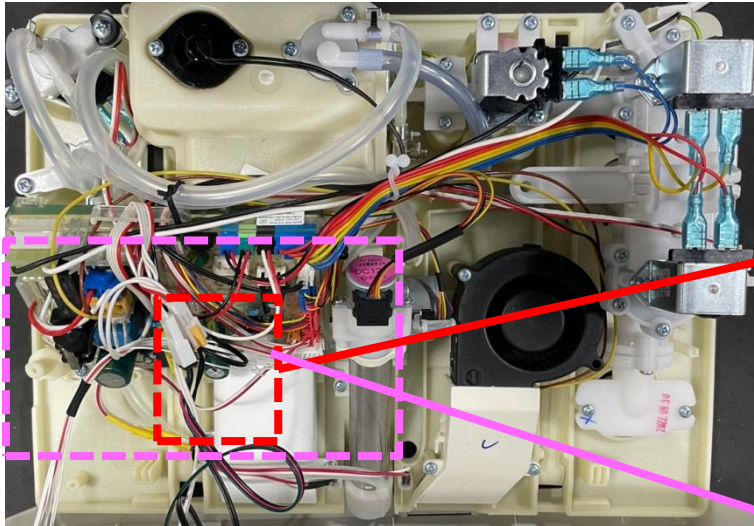
③ Place the unit like the photo



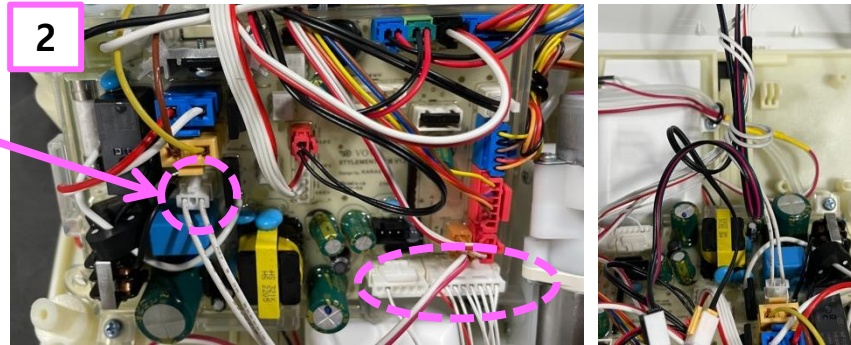
④ Attach the damper into the hole and screw the 4 screws shown in the photo.

## How to resolve heated seat malfunctioning(Seat replacement)

### 5. Assemble the SEAT and SEAT COVER



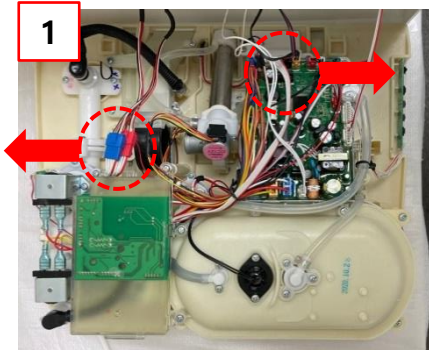
① Attach all harness that connects the seat and the MAIN PCB in same color.



② Use the longest white harness and rotate all wires 3 times so it can get organized.

## How to resolve heated seat malfunctioning(Seat replacement)

### 6. Close the Cover Base



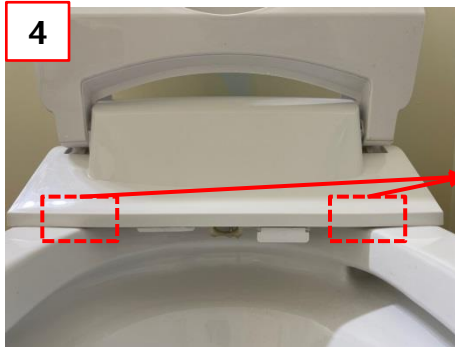
① Organize all the wires in the directions as above not to interfere the nozzle movement.



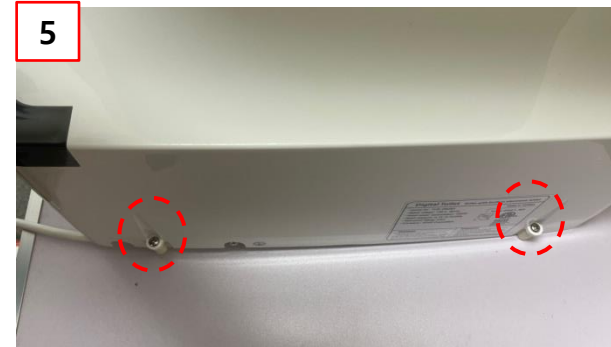
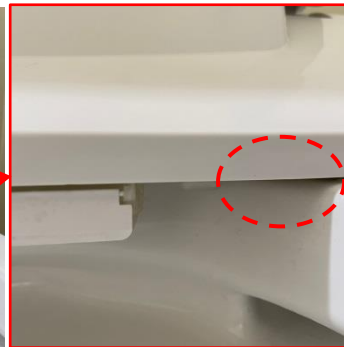
② Close the cover base in the arrow direction as above.



③ Push down using your palms as above to hear clicks.



④ Check whether the cover base is assembled perfectly. If you heard clicks, it's perfectly done.



⑤ Screw the 2 screws back using a Phillips head driver.



[Click for the Video Guide](#)