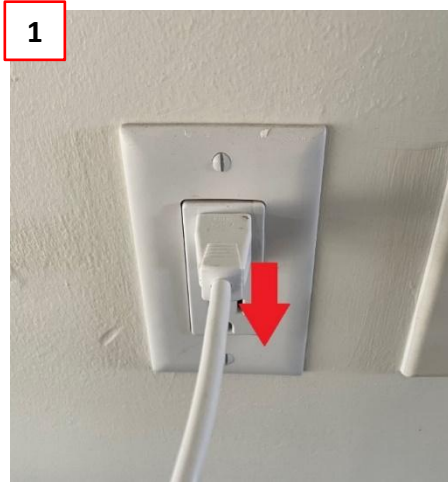


6. When the seat is not getting warm

When heated seat function is not operational

When the seat is not getting warm

1. Reset the unit



① Unplug the cord

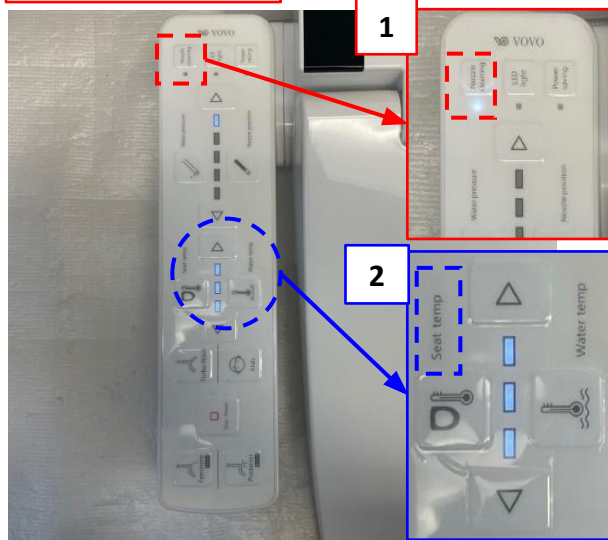


② Plug the cord back

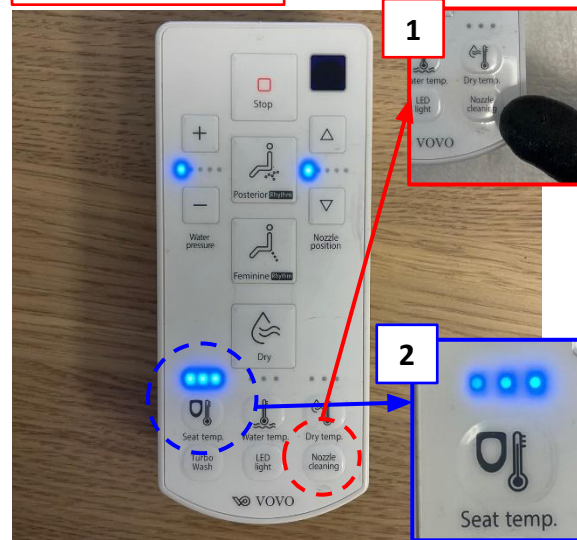
When the seat is not getting warm

2. Check the setting on the side control panel or the remote

3000/5000 Series



4000/6000 Series



- ① Check whether the unit is receiving the signal from the Side control panel (3000/5000 Series) or the Remote (4000/6000 Series) by pushing the nozzle cleaning button.
- ① Set the seat temperature setting to the highest from the Side control panel (3000/5000 Series) or the Remote (4000/6000 Series).
- ③ After setting the temperature, wait 3-4 minutes to see if the warm seat function is operational.



Please test the function again at this stage. If the problem is not resolved, please contact our customer support team so that we can provide a replacement unit with a prepaid return label.