

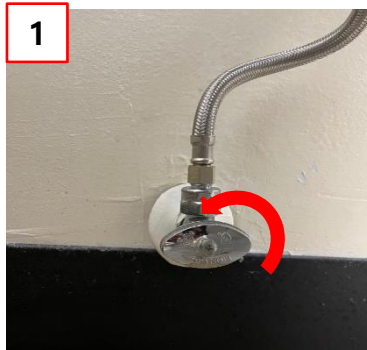
6. Flush

When flush is not fully operational

! Before proceeding to the guide, please make sure to send the video of you flushing the toilet so we can provide better assistance.

When the flush is not fully operational

1. Open the water valve fully and check

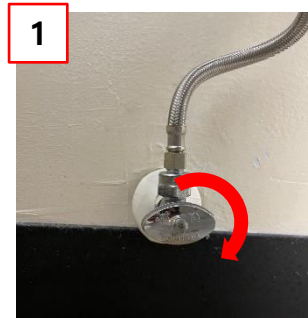


① Fully open the water valve in counterclockwise. If the supply water pressure is too high, it may cause malfunction. Please check the supply water pressure and adjust the valve just enough to flush. You may need a try and error.

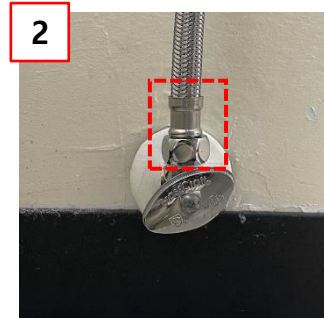
! Please test the function again at this stage. If the problem is not resolved, please move on to the next page and follow the instruction.

When the flush is not fully operational

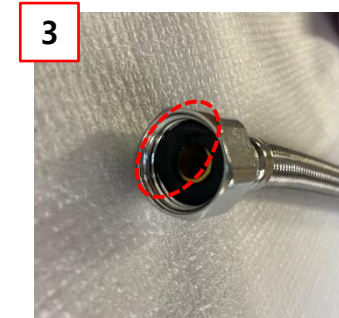
2. Check the hose



① Fully close the water valve clockwise



② detach the hose from the water valve



③ Check the rubber packing from the hose

④ If you see any distortion in rubber packing, please contact our customer support team so we can send you a new hose. Make sure not to use heavy forces to avoid any distortion in the rubber packing.



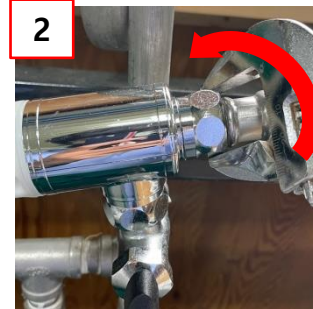
If there is no distortion in the rubber packing, please move on to the next page and follow the instruction.

When the flush is not fully operational

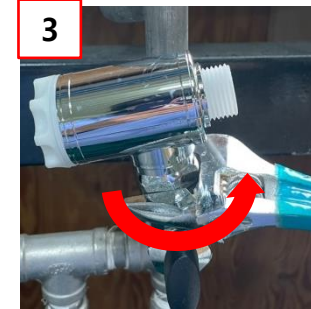
3. Cleaning the strainer filter



① Fully close the water valve clockwise



② Detach the strainer from the hose



③ Detach the strainer from the water shutoff valve



④ Detach the strainer filter (white part) from the strainer by rotating it clockwise

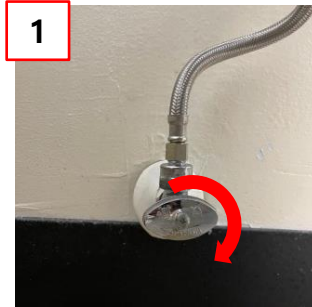


⑤ Wash the strainer filter under the running water and attach all the connection back to its place.

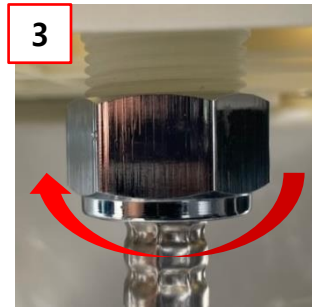
! Please test the function again at this stage. If the problem is not resolved, please move on to the next page and follow the instruction.

When the flush is not fully operational

4. Clean the water hose



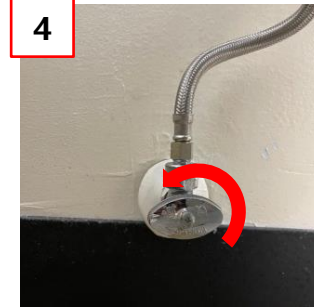
① Fully close the water valve clockwise



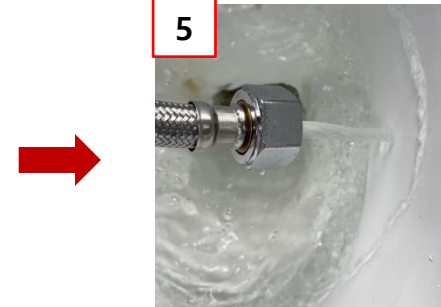
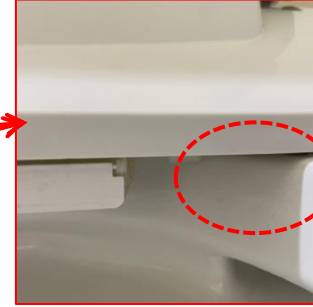
③ Detach the hose by rotating clockwise



② Detach the bidet upper part and the lower ceramic part by pushing the lever on the picture and tilting the unit to the right side



④ Open the water supply



⑤ Wash the hose around 10 seconds



Make sure that the end of the hose is in the area where water can be discharged to avoid accidental water spillage



Please test the function again at this stage. If the problem is not resolved, please move on to the next page and follow the instruction.

When the flush is not fully operational

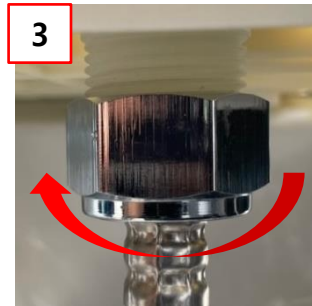
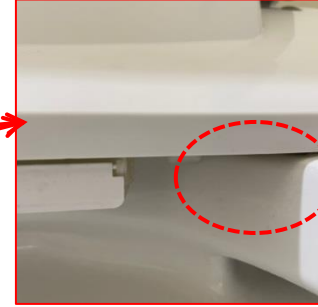
5. Detach the water pressure regulating valve



① Fully close the water valve clockwise



② Detach the bidet upper part and the lower ceramic part by pushing the lever on the picture and tilting the unit to the right side



③ Detach the hose by rotating clockwise



④ Place the bidet upper part as the photo



⑤ Use tool to remove the water pressure regulating valve(Green) by pulling it out

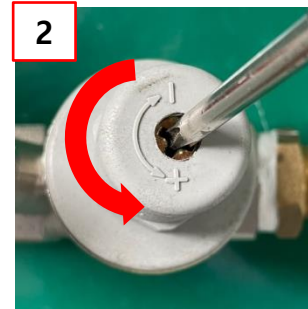
! Please test the function again at this stage. If the problem is not resolved, please move on to the next page and follow the instruction.

When the flush is not fully operational

6. Increase the water pressure valve



① Fully close the water valve clockwise



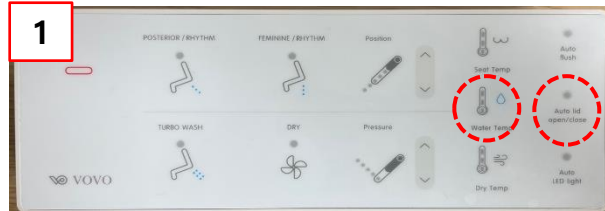
② Increase the water valve to increase the water supply

⚠ Water pressure valve may differ from the ones on the photo as there are different types with different ways to adjust the water pressure. Please make sure to consult with someone who knows about the water pressure valve such as your contractor, plumber or handyman.

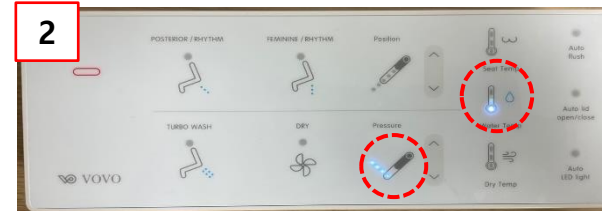
⚠ Please test the function again at this stage. If the problem is not resolved, please move on to the next page and follow the instruction.

When the flush is not fully operational

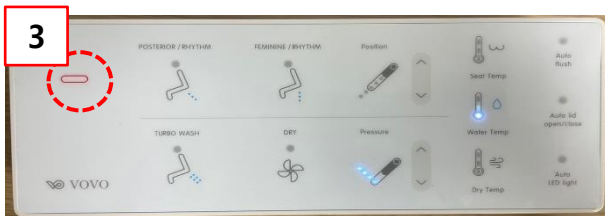
7. Increase the water flow



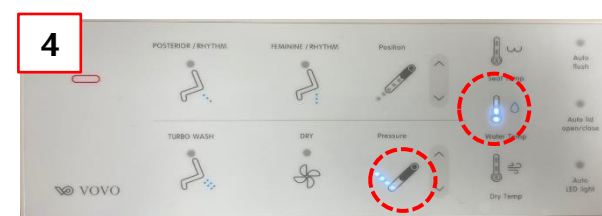
① Enter the setting mode by pushing the water temp button and auto lid open/close button at the same time.



② Original status
: Water pressure level 4 / Water temperature level 1



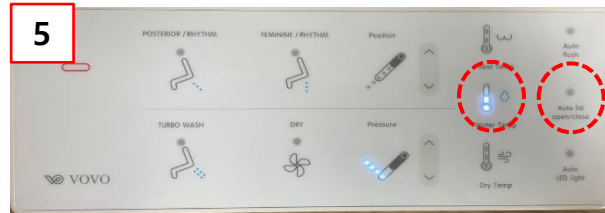
③ Increase the water flow by pushing the stop button



④ When the water flow is increased
: Water pressure level 4 / Water temperature level 2

When the flush is not fully operational

7. Increase the water flow



⑤ Change back to normal remote mode by pushing the water temp button and auto lid open/close at the same time.



⑥ Normal remote setting: NO LED light is turned on



090S Remote

- Please push water temp button and power save button to access setting mode and to change back to normal remote mode



Please test the function again at this stage. If the problem is not resolved, please contact our customer support team so that we can provide replacement unit with prepaid return label.