

The Modern Sewer



Pockets

An informal document to share pocket ideas.

Gusset Pocket



Instructions

Gusset Pocket

Suitable Fabrics:

This pocket style works well for any fabric that you would naturally french seam. Waxed cottons, denims and twills are perfect. If you can't french seam the fabric then it's best to opt for the Pleated Pocket instead. Instructions are for ONE pocket. If you're planning to do a pair, double up on the cutting instructions.

Pocket Flap

- Cut your pocket flap in 1 x self and 1 x lining (you can use self if you don't have a lining fabric).
- If you want to add fusing to your pocket flap cut an extra piece in fusing and fuse the self piece. I would generally recommend a fusing unless you have an oily waxed cotton or other fabric that can't be fused. Iron your fusing on before starting the sewing.
- Place the self and lining **RIGHT SIDES TOGETHER** and stitch around the curved edge from point A to B with a 0.5cm seam allowance.
- Flip the piece out the right way and press the seam flat

Gusset pocket

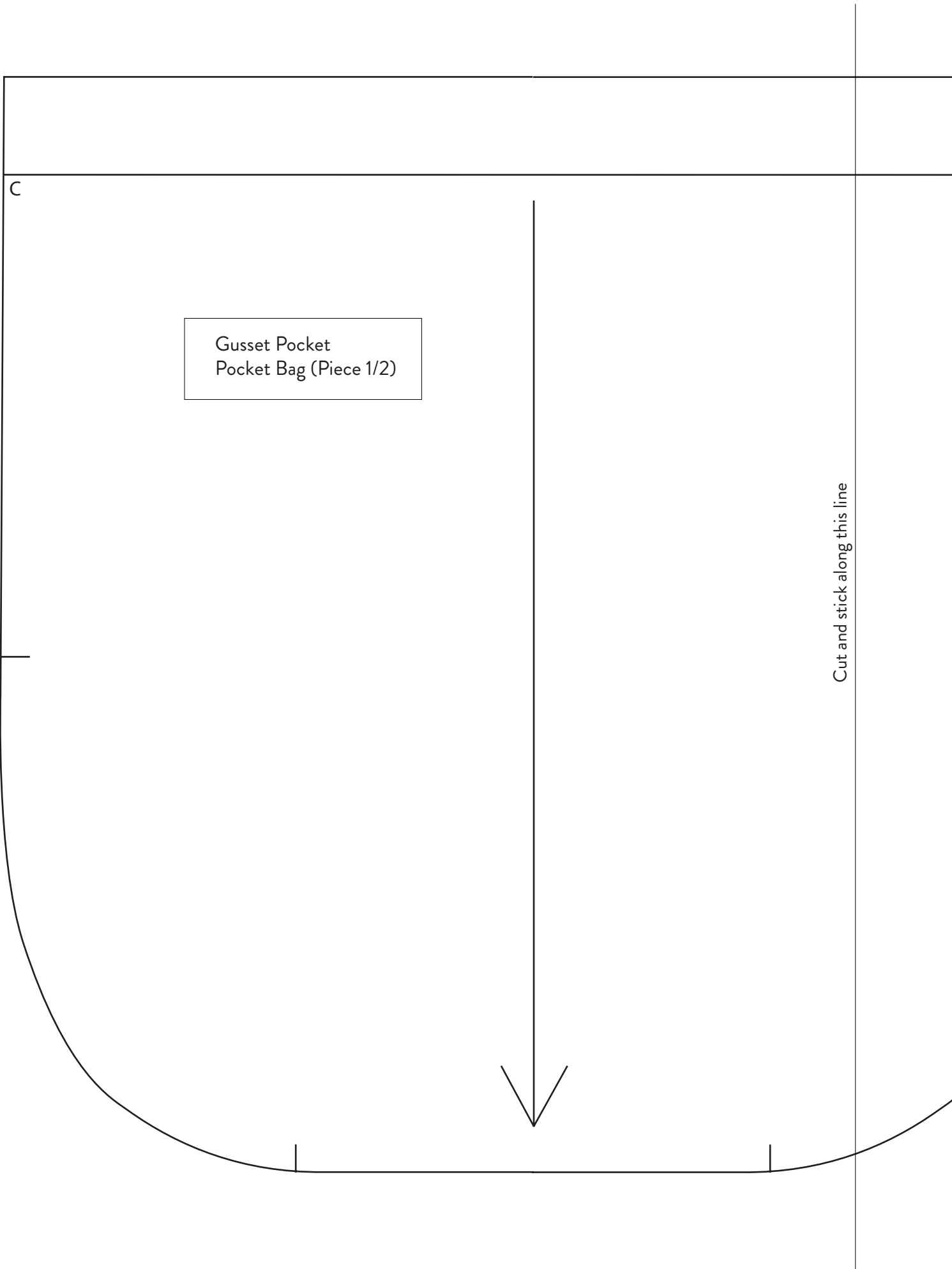
- Make sure your notches are snipped as these are important
- Place your gusset and pocket **RIGHT SIDES TOGETHER**. Line up the points labeled C and pin all the way around. The gusset will sit around the outside of the pocket with a 2cm gap from the top of the pocket at each side. Stitch around at 0.5cm seam allowance.
- Flip the seam back on itself to form a french seam. Stitch around again at 0.5cm. The seam will be on the outside/right side of the pocket
- Hem the outside edge of the gusset (the edge with no notches) by turning 0.5cm under, followed by another 0.5cm.
- Next, fold the top edge down by 1cm and then another 1cm. This double fold will enclose the messy top edge of the gusset. You will need to make sure your gusset is neatly folded in two and sitting nicely under the top fold. (Refer back to the pictures if you need to see a visual!).
- Stich along the top fold at 1mm from the edge.

Attaching to the garment

- Place both your flap and your pocket on your front panel. If you're doing a left and right pocket make sure you mark both on at the same time to get them symmetrical and evenly spaced.
- You can place them wherever you like, but for a comfortable feel I recommend placing them 43cm from the side-neck-point and 7cm in from the edge of the front. This works particularly well on a lengthened Potters Jacket. If you haven't lengthened your jacket then 32cm from the side-neck-point will be a better measurement to aim for. (Please note these measurements are from the finished garment - add 1cm to each measurement to measure from the raw seam allowances).
- The pocket flap should be placed 2cm above the top of the pocket. Check the positioning and if you're planning to add a button and button hole then check the pieces overlap nicely. Pin both pieces into place.
- To stitch the Pocket Flap down, stitch the under side down first by turning the flap up. Stitch across at 0.5cm and then fold the flap down and stitch again at 0.5cm.
- To stitch the pocket, pin the hemmed gusset edge carefully in a curve. Stitch around the hem at 1/2mm from the edge. You won't get your machine foot into the edges at the top but just get as close as you can. When you've stitched around then come back to the top and topstitch the top corners of the pocket down to secure.
- You can now add your button and button hole if you're choosing to do so.

Pattern

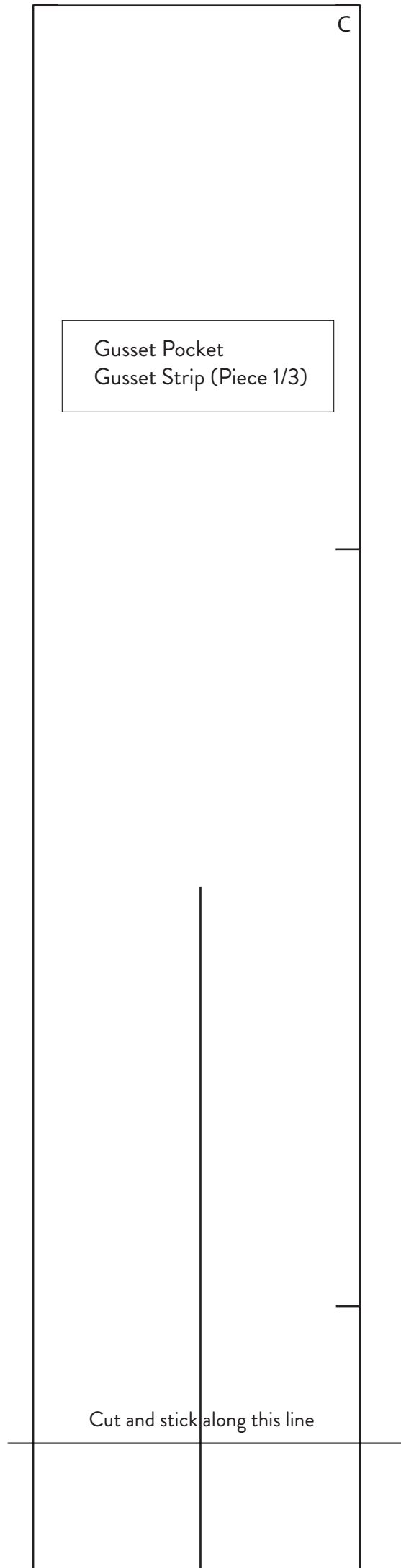
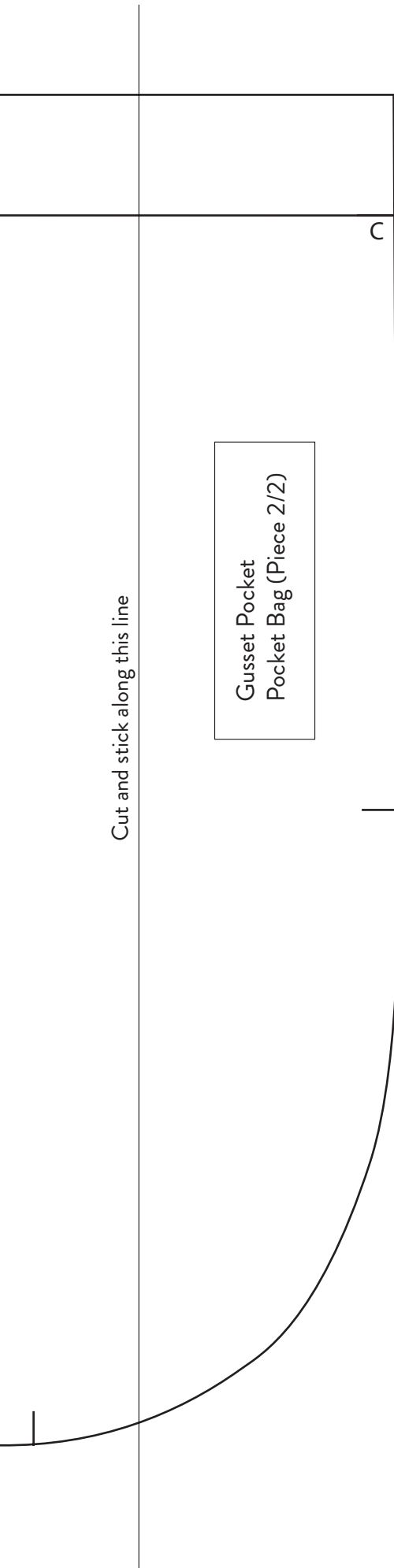
Gusset Pocket



C

Gusset Pocket
Pocket Bag (Piece 1/2)

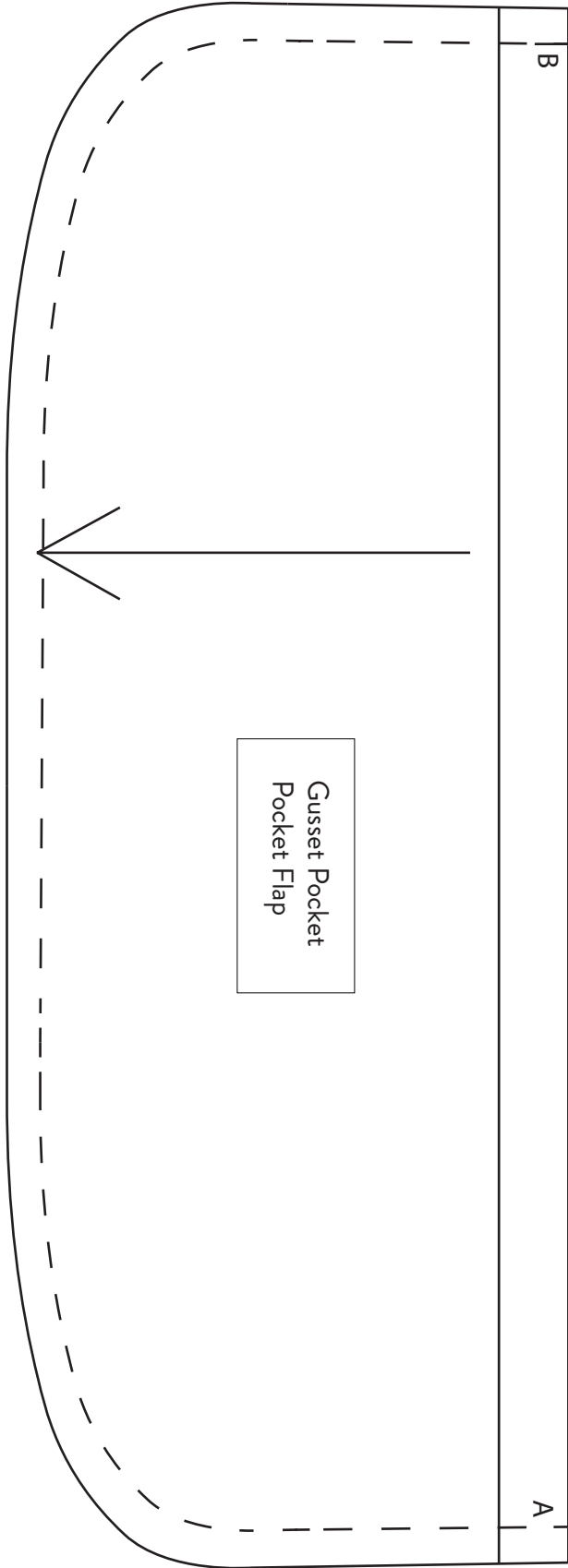
Cut and stick along this line



Cut and stick along this line

Gusset Pocket
Gusset Strip (Piece 3/3)

C

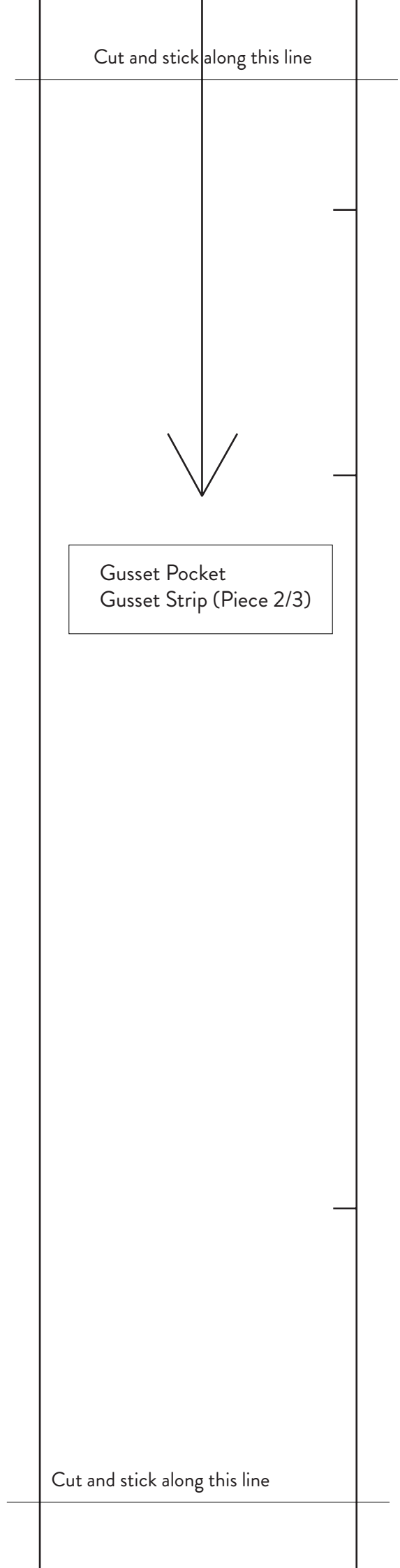


Cut and stick along this line

Gusset Pocket
Gusset Strip (Piece 2/3)



Cut and stick along this line



Pleated Pocket



Instructions

Pleated Pocket

Suitable Fabrics:

This pocket was designed to work with a wool fabric as an alternative to the Gusset Pocket. The fabric should be relatively thick/spongey to hold its shape nicely. A wool or lightly quilted fabric would be perfect.

Instructions are for ONE pocket. If you're planning to do a pair, double up on the cutting instructions.

Pocket Flap (optional)

- Cut your pocket flap in 1 x self and 1 x lining and 1 x fusing. Fuse the underside of your self piece.
- Place the self and lining RIGHT SIDES TOGETHER and stitch around the curved edge from point A to B with a 0.5cm seam allowance.
- Flip the piece out the right way and press the seam flat

Pleated Pocket

- Place the lining and the pocket right sides together and line up the top straight line. Stitch down at 1cm.
- Press the top edge of the pocket down to form a crisp line. Your lining should now be sitting behind your pocket. Now stitch across this fold 1cm from the edge.
- To sew your small pleat at the bottom of the pocket fold the pocket in half, right sides together and stitch up to the drill hole mark. Then flatten the pleat evenly between both sides and stitch down. Hold the self and lining together for this pleat.
- Overlock around the curved edge of the pocket, catching the lining and self together. Go nice and slowly over the pleat as it will be more bulky. Refrain from snipping the threads too short until you've pulled the ends and made a small knot. This will stop them from unravelling.

Attaching to the garment

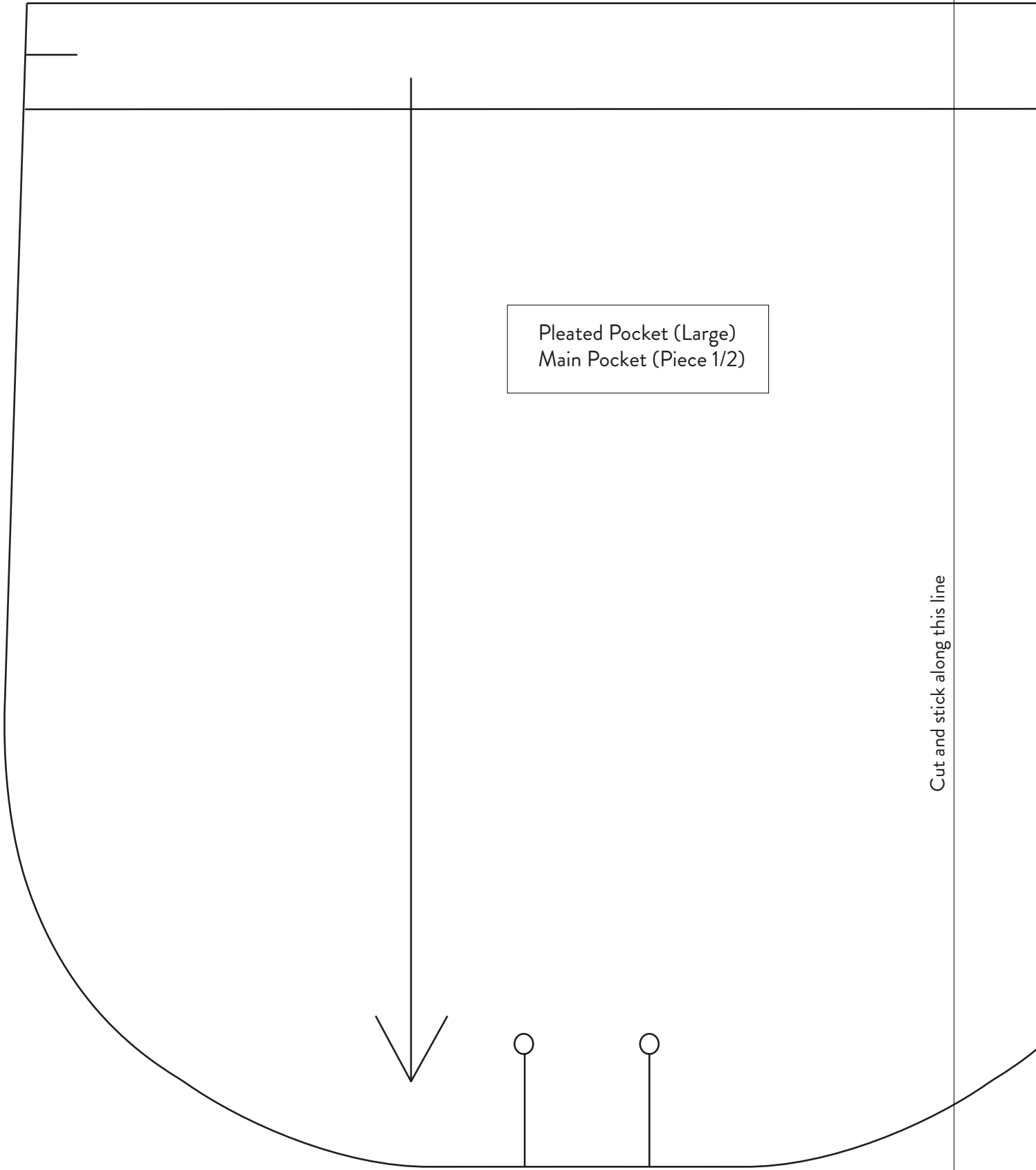
- Place both your flap and your pocket on your front panel. If you're doing a left and right pocket make sure you mark both on at the same time to get them symmetrical and evenly spaced.
- You can place them wherever you like, but for a comfortable feel I recommend placing them 43cm from the side-neck-point and 7cm in from the edge of the front. This works particularly well on a lengthened Potters Jacket. If you haven't lengthened your jacket then 32cm from the side-neck-point will be a better measurement to aim for. (Please note these measurements are from the finished garment - add 1cm to each measurement to measure from the raw seam allowances). For a smaller breast pocket, 23cm down from the shoulder seam works nicely.
- The pocket flap should be placed 2cm above the top of the pocket. Check the positioning and if you're planning to add a button and button hole then check the pieces overlap nicely. Pin both pieces into place.
- To stitch the Pocket Flap down, stitch the under side down first by turning the flap up. Stitch across at 0.5cm and then fold the flap down and stitch again at 0.5cm.
- To stitch the pocket, simply stitch around the edge at 1mm from the edge. If you plan to use the pocket to hold keys and phones etc, you might like to add a second row of stitching for extra strength.

Pattern

Pleated Pocket

Pleated Pocket (Large)
Main Pocket (Piece 1/2)

Cut and stick along this line



Cut and stick along this line

Pleated Pocket (Large)
Main Pocket (Piece 2/2)

Cut and stick along this line

Pleated Pocket (Large)
Pocket Lining (Piece 2/2)

Cut and stick along this line

Pleated Pocket (Large)
Pocket Lining (Piece 1/2)

