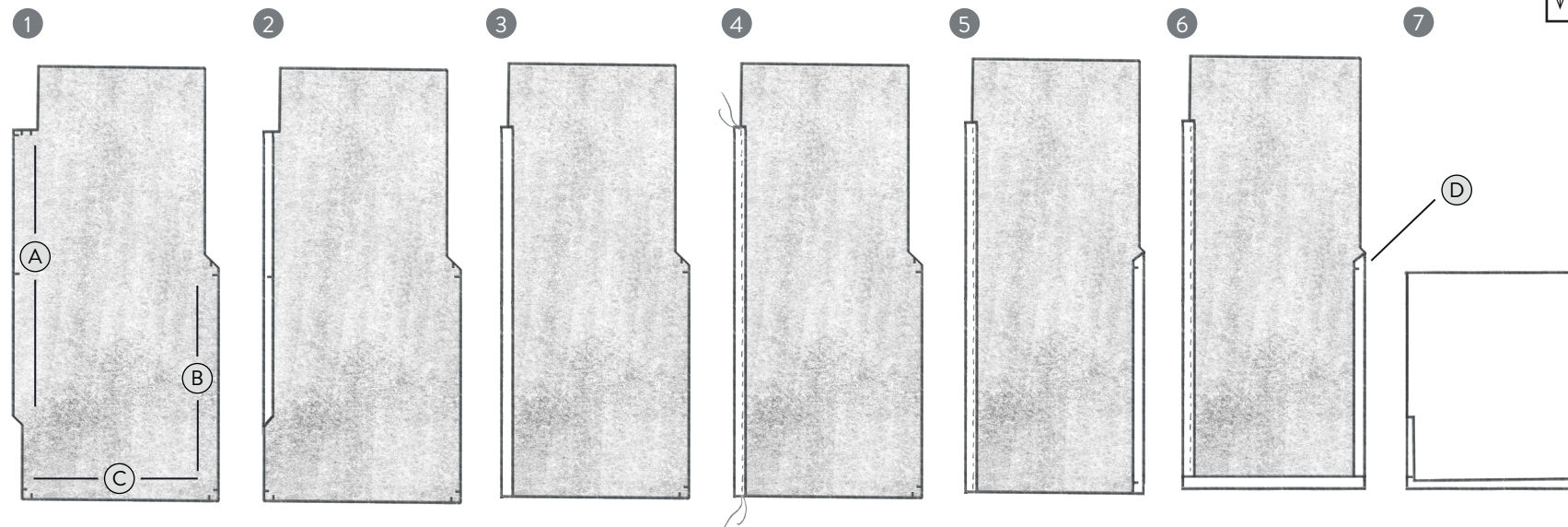


## Sewing Instructions: Jaime Jacket - Two-way Pocket

Check your  
pattern has been  
printed to the  
correct scale by  
measuring this  
5cm x 5cm box.

①



### Patch Pocket with Dual Opening

Follow the steps below to begin your dual opening patch pockets.

1. Lay the Pocket pieces (11) on the ironing board **WRONG SIDE UP**.
2. Fold in 1cm of Edge A at the first notch and give it a press.
3. Then fold in Edge A by another 1cm and press.
4. Edgestitch Edge A down 1mm from the folded edge. (If you're using a topstitch thread you might like to pin and then sew it from the **RIGHT SIDE**).
5. Fold in Edge B by 1cm and press.
6. Fold in Edge C by 1cm and press.
7. Then fold the pocket down at notch D and make sure the layers are sitting neatly, then press.

Repeat the process for your second pocket.



Right Side



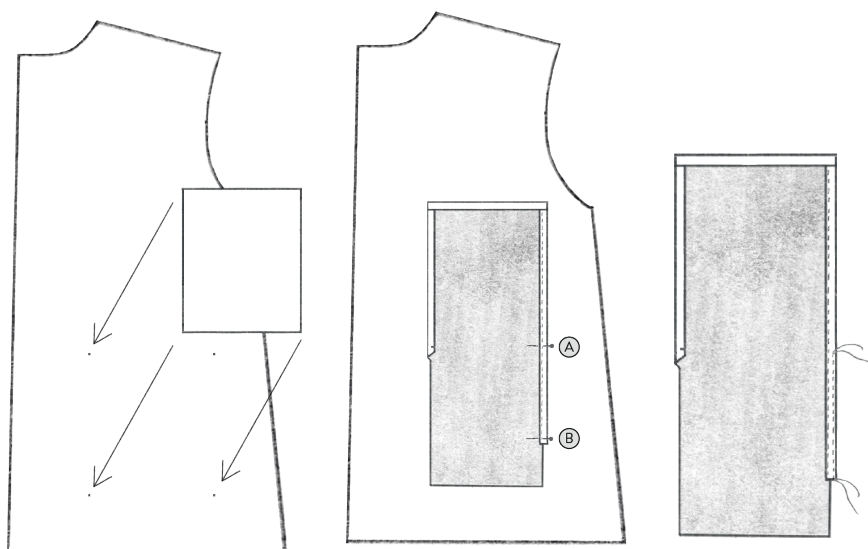
Wrong Side



Fusing

## Jaime Jacket - Two-way Pocket

2

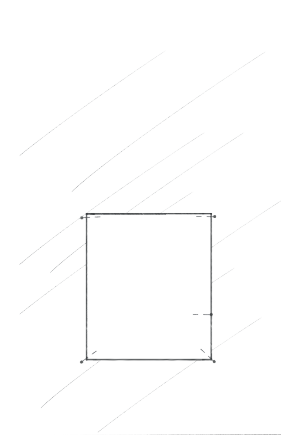


### Attach Front Pocket to the Body

Make sure your pocket position is marked on the Front pieces (1) and lay the folded pocket on top. Position the stitched side closest to the side seam as shown. Once you're happy with the position carefully open up the top layer of the pocket so it sits flat and add a pin at the crease of the fold (A) and the bottom of the stitched seam (B).

Then add a line of stitching 1mm from the pocket edge between these two pins.

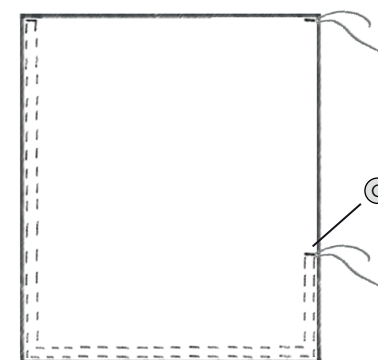
3



### Attach Front Pocket to the Body

Next fold the pocket down on itself again and pin into place as shown.

4



### Attach Front Pocket to the Body

Stitch the pocket down by starting at the bottom of the pocket opening (labelled C in the sketch). Sew a sturdy bar tack about 3 stitches wide, going back and forward to strengthen the area. Then continue to stitch around the bottom of the pocket 1mm from the edge.

Sew another bar tack at the top corner and then follow the stitching around on the inside at 7mm from the previous line, finishing at the first bar tack.

Then finish by adding a final bar tack on the top corner of the pocket (this bar tack isn't connected to any other stitching).



Right Side

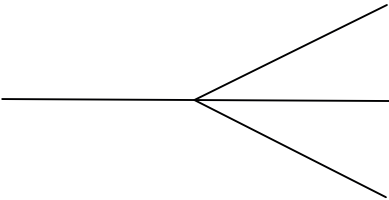


Wrong Side



Fusing

Side B



Side C

Jaime Jacket

Front Pocket

Cut 1 Pair in SELF

All Sizes



Side A

