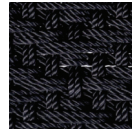


RIA Dining Side Chair (stackable)

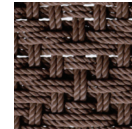
RATANA



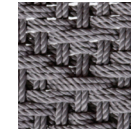
Frame: Aluminum
Finish: Black



Weave: Durarope™
Finish: Black



Weave: Durarope™
Finish: Brown



Weave: Durarope™
Finish: Grey

FN58811BLK | FN58811BRN | FN58811GRY



Seat Height*: 18"



Overall Height: 31.5"



Depth: 23"



Width: 25.5"

Weight: 12 LBS



TECHNICAL INFORMATION

- Frame: Aluminum
- TIGER Drylac®(49 Series) powder coated aluminum frame
- Durarope™ – 4mm Polypropylene (PP) braided rope, a thermoplastic polymer
- Durarope™ tested for UV exposure: the Grey Scale is 4 to 5 under 3,000 hrs UV test
- Open armless frame
- Hoop-shaped back frame with net-like rope support
- Fully woven seat with 2x2 V-shaped pattern for comfort
- Chairs are compactly stackable, 6pcs per stack
- Max. weight load: 350 LBS per seat
- Contract quality
- For outdoor use only

Toll Free Phone: 886.919.1881
Toll Free Fax: 888.880.8209
Email: sales@ratana.com
Website: www.ratana.com