

Milos daybed

by Jean-Marie Massaud

The Milos collection is the fruit of **Vondom's first collaboration with French designer Jean-Marie Massaud**. An example of how simplicity and functionality can be combined to create an elegant and comfortable outdoor furniture collection. Characterised by soft curves, this collection focuses on comfort.



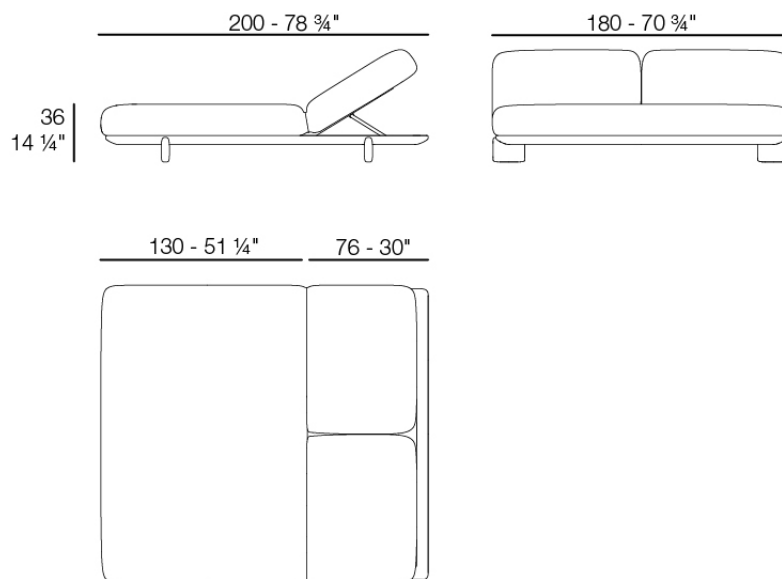
Info

Description

The Milos collection daybed combines functionality and beauty in perfect harmony. Precision crafted, it features a lacquered aluminium frame that ensures exceptional resistance to outdoor conditions,

while its elegant iroko wood legs add a touch of warmth and sophistication, providing stability and a connection to nature.

Weight: 55 Kg



MILOS Daybed
MILOS Daybed
Ref. 70012

Finishes

finishes

POLYURETHANE

Ref. 70012

Furniture made of flexible polyurethane injected cold. This material possesses a high resilience and durability.

fabric

GLAD

Ref. 70012CO



oro 1031



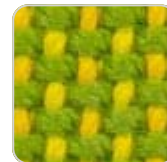
ocre 1051



sunset 1020



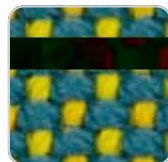
delhi 1038



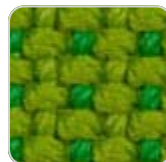
lima 1030



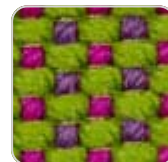
aguacate 1028



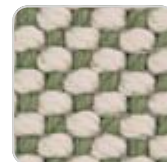
caribe 1004



bosc 1029



artemisa 1027



oasis 1007



oceano 1005



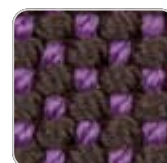
pruna 1045



noa 1026

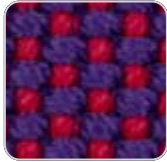


berry 1021



amatista 1011

VONDOM



vera 1019



afrodita 1013



grana 1046



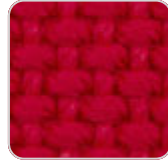
bacco 1034



dahlia 1035



wine 1012



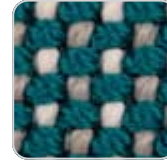
foc 1052



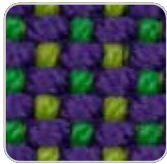
hestia 1014



turquoise 1053



niord 1015



masai 1018



ultramar 1002



aquamarina 1003



esmeralda 1016



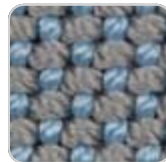
night 1024



galan 1025



eclipse 1023



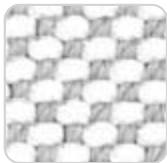
perla 1006



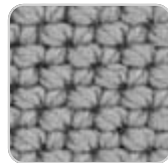
calipso 1017



snow 1041



iceberg 1037



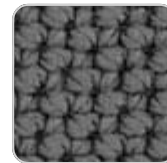
steel 1042



moon 1040



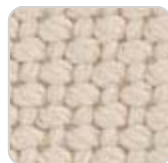
granito 1008



grey 1043



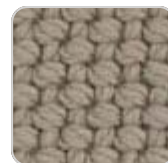
anthracite 1044



ecru 1047



dessert 1033



taupe 1048



terra 1039



duna 1009



moka 1010



chocolate 1050

Soft and cozy fabric suitable for indoor and outdoor use.

VARM

VONDOM

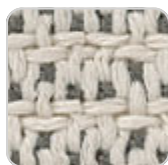
Ref. 70012CO



crema+blue 1063



blue jeans 1071



crema+gray 1062



tortora+crema 1070



crema+ purjai red
1061



purjai red 1069



crema 1068



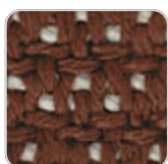
crema+modo green
1060



blue+crema 1067



black+crema 1066



purjai+crema 1065



green+crema 1064

Soft and cozy fabric suitable for indoor and outdoor use.

HYGGE

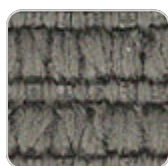
Ref. 70012CO



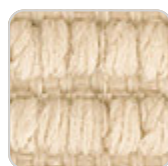
blue 1083



black 1082



gray 1081



crema 1080

Soft and cozy fabric suitable for indoor and outdoor use.

KROLLET

Ref. 70012CO

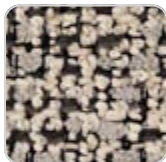
VONDOM



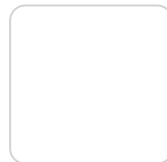
krollet purjai 1924



krollet verde 1923



krollet crema 1922



krollet white 1921



krollet black 1926



krollet blue notte 1925

Soft and cozy fabric suitable for indoor and outdoor use.

Ambients

